

# Bush Blitz aids description of three new species and a new genus of Australian beeﬂies (Diptera, Bombyliidae, Exoprosopini)

Christine L. Lambkin<sup>1,†</sup>, Justin S. Bartlett<sup>2,‡</sup>

**1** Entomology, Queensland Museum, PO Box 3300, South Brisbane, Queensland, Australia 4101 **2** DEEDI Entomology, Ecosciences Precinct, GPO Box 46, Brisbane, Queensland, 4001

† [urn:lsid:zoobank.org:author:73892CE4-985E-4A69-8C41-EC9E2458751B](http://urn:lsid:zoobank.org:author:73892CE4-985E-4A69-8C41-EC9E2458751B)

‡ [urn:lsid:zoobank.org:author:369DC37F-3E93-4EEE-934A-60A44156F153](http://urn:lsid:zoobank.org:author:369DC37F-3E93-4EEE-934A-60A44156F153)

Corresponding author: Christine L. Lambkin ([christine.lambkin@qm.qld.gov.au](mailto:christine.lambkin@qm.qld.gov.au))

---

Academic editor: T. Dikow | Received 4 August 2011 | Accepted 27 September 2011 | Published 28 November 2011

[urn:lsid:zoobank.org:pub:90084A21-1988-455F-AB04-D6BFE3E38D5C](http://urn:lsid:zoobank.org:pub:90084A21-1988-455F-AB04-D6BFE3E38D5C)

---

**Citation:** Lambkin CL, Bartlett JS (2011) Bush Blitz aids description of three new species and a new genus of Australian beeﬂies (Diptera, Bombyliidae, Exoprosopini). In: Smith V, Penev L (Eds) e-Infrastructures for data publishing in biodiversity science. ZooKeys 150: 231–280. doi: 10.3897/zookeys.150.1881

---

## Abstract

Bush Blitz is a three-year multimillion dollar program to document the plants and animals in hundreds of properties across Australia’s National Reserve System. The core focus is on nature discovery – identifying and describing new species of plants and animals. The Bush Blitz program has enabled the collection and description of beeﬂies (Diptera, Bombyliidae) from surveys in Western Australia and Queensland. Three new species of Australian beeﬂies belonging to the Exoprosopini are described; *Palirika mackenziei* Lambkin, **sp. n.**, *Palirika culgoastloodplainensis* Lambkin, **sp. n.**, and *Larrpana bushblitz* Lambkin, **sp. n.** Phylogenetic analysis of 40 Australian exoprosopine species belonging to the *Balaana* generic-group Lambkin & Yeates, 2003 supports the placement of the three new species into existing genera, and the erection and description of the new genus *Ngalki* Lambkin, **gen. n.** for *Ngalki trigonium* (Lambkin & Yeates, 2003), **comb. n.** Revised keys are provided for the genera of the Australian *Balaana* genus-group and the species of *Palirika* Lambkin & Yeates, 2003 and *Larrpana* Lambkin & Yeates, 2003. With the description of the three new species and the transferral of *Munjua trigona* Lambkin & Yeates, 2003 into the new genus *Ngalki* Lambkin, **gen. n.**, three genera are rediagnosed; *Munjua* Lambkin & Yeates, 2003, *Palirika* and *Larrpana*.

## Keywords

*Ngalki*, *Palirika*, *Larrpana*, *Munjua*, *Balaana* genus-group, phylogenetic analysis, cybertaxonomy, Scratchpads, Morphbank

## Introduction

While there are more than 140,000 published species in Australia, more than 40 per cent of continental Australia has never been comprehensively surveyed by scientists. This research was supported through funding from the Bush Blitz species discovery program, a partnership between the Australian Government, BHP Billiton and Earthwatch Australia. This innovative partnership harnesses the expertise of many of Australia's top scientists from museums, herbaria, universities, and other institutions and organisations across the country. Bush Blitz is expected to uncover hundreds of new species and provide baseline scientific data that will help us protect our biodiversity for generations to come.

This paper describes three species of beeﬂies from the Exoprosopini (Diptera, Bombyliidae, Anthracinae); two captured during Bush Blitz surveys and a third species collected from south-western Queensland (Qld). All three species belong to genera recently described (*Palirika* Lambkin & Yeates, 2003 and *Larripa* Lambkin & Yeates, 2003) in a large revisionary monograph (Lambkin et al. 2003) and therefore can be described reasonably easily as all collected material has been examined recently, and the context for their description is in place.

The beeﬂies belong to the Family Bombyliidae, a very large, cosmopolitan family of stoutly built ﬂies, mostly with very characteristic venation. Almost 5000 species have been described worldwide (Evenhuis and Greathead 1999) and around 370 have been described from Australia, with many more species awaiting description (Yeates and Lambkin 2006). Nine of the 15 recognised subfamilies (Yeates 1994) are found in Australia, and a key to these subfamilies is available (Lambkin et al. 2003). Most Australian species belong to the subfamilies Bombyliinae, Anthracinae and Lomatiinae. The Anthracinae are well represented in Australia, mainly by the cosmopolitan *Anthrax* Scopoli, 1763, *Ligyra* Newman, 1841, *Villa* Lioy, 1864, and a number of endemic genera including *Palirika* and *Larripa* (Yeates and Lambkin 1998; Lambkin et al. 2003). Of the seven anthracine tribes, three (Villoestrini, Prorostomatini, Aphoebantini) are not found in Australia. Keys to the four tribes of the Anthracini occurring in Australia are available (Lambkin et al. 2003). The tribe Xeramoebini is represented in Australia by only two, still undescribed, species of *Petrorossia* Bezzi, 1908. There are 28 species of Australian Villini in the genera *Villa*, *Exechohypopion* Evenhuis, 1991 and *Lepidanthrax* Osten Sacken, 1877 (Evenhuis and Greathead, 1999). The Anthracini is represented by 34 described species in the genera *Anthrax*, *Brachyanax* Evenhuis, 1981, and *Thraxan* Yeates & Lambkin, 1998 (Yeates and Lambkin 1998). Based on the phylogenetic analyses the Australian Exoprosopini was expanded to ten genera containing 65 species, including seven new genera for 42 species in the *Balaana* genus-group Yeates & Lambkin (Lambkin et al. 2003).

Australian exoprosopines are large beeﬂies of diverse and striking appearance (Figs 4C, 6D, 7B) with wings usually bearing distinct hyaline and black patterns. Like most bombyliids, adult Australian exoprosopines are well covered in long, dense, coloured hairs arranged in patterns, often in stripes across the dorsal surface of the abdomen, leading to their common name of beeﬂies. In Australian exoprosopines, like other

members of the Anthracinae, many of the long hairs, especially on the dorsal surface, are modified into short, broad, flattened scales, often in contrasting stripes. The scales may be erect or upstanding, producing a “fluffy” appearance as in *Larrpana bushblitz* Lambkin, sp. n. (Fig. 7A). Sometimes the dorsal scales are tightly adpressed, producing a smooth, often shiny appearance as in *Palirika* (Fig. 6D). Some beeﬂies have some scales or hairs that are reflective, appearing shining gold or brilliantly silver as on the terminal tergites of the male anthracine *Anthrax maculatus* Macquart, 1846 (Yeates and Lambkin 1998). While many beeﬂies have vestiture (hairs or scales) that is shiny, only the endemic Australian genus *Palirika* has metallic, reflective scales for which the colour of the reflected light is different from the colour of the scales. In this genus black scales on the dorsal surface of the face, thorax, and abdomen may be iridescent and refractive, and reflect green, blue, maroon or purple colours (Fig. 6C, D). The reflectivity may be very dull, almost dark as in *Palirika mackenziei* Lambkin, sp. n. (Fig. 6C, D), or highly reflective and bright (Lambkin et al. 2003).

Adult Australian exoprosopines favour warm, sunny localities, especially in the more arid regions. Most have a strong, hovering flight, and are commonly taken from blossom, or sitting on patches of bare earth. Adults are pollen and nectar feeders, and many are important pollinators of native plants. Many species can be collected congregating on hilltops, demonstrating a landmark-based mating system (Lambkin et al. 2003). Very little is known about the life histories of Australian exoprosopines, but some larvae are hyperparasites, parasitising prepupal instars of Hymenoptera that, in turn, are parasitising Coleoptera (Yeates et al. 1999).

This paper describes three new species of exoprosopine beeﬂies; two captured during Bush Blitz surveys and a third species collected from south-western Qld.

*Palirika mackenziei* sp. n. was collected from the large grazing property, Plevna Downs, owned by the Mackenzie family, 63 km west of Eromanga, in extremely arid south-western in late December 2007. While accompanied by Noel Starick (QM volunteer) and Robyn Mackenzie, CLL hand netted a single female specimen (Fig. 6C, D) hill-topping on the summit of Tompilly Hill (Fig. 1A, B), a jump up on Plevna Downs. This species was unlike any other *Palirika* collected; smaller and darker in both body and wing infuscation.

Four male specimens (Fig. 7A, B) of *Larrpana bushblitz* sp. n. were hand netted by CLL from Karara Pastoral Lease in Western Australia, hill-topping on Forrest lookout (Fig. 1D), 24.4km SE Boiada Camp and on a nearby hilltop 23.5km ESE Boiada Camp during the Bush Blitz survey co-organised by WAM on Charles Darwin Reserve, Karara, Lochada and Kadji Kadji Pastoral Leases, 213 km ESE of Geraldton, in September 2009. This species appeared similar to the two male specimens of *Larrpana zwicki* Lambkin & Yeates, 2003 collected only near Windorah (Lambkin et al. 2003).

*Palirika culgoafloodplainensis* Lambkin sp. n. was collected from Culgoa Floodplains National Park (NP) on the Queensland/New South Wales Border, 134 km WSW Dirranbandi, during the Bush Blitz survey of Culgoa Floodplains NP Qld, Culgoa NP and Ledknapper Nature Reserve (NR) NSW (NSW) organised by CLL and Noel Starick from QM between November 2009 and June 2010. A single male specimen

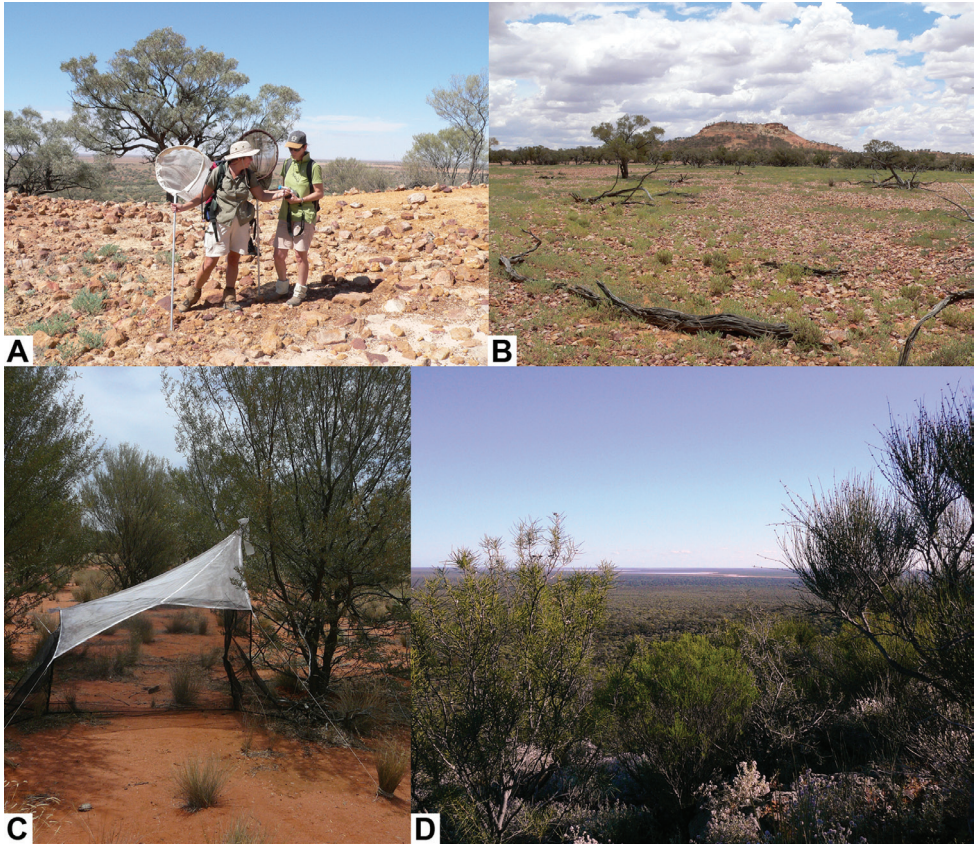
(Fig. 4C, D) was sorted by QM volunteer John Purdie from a Malaise trap sample from 7 km NNW Toulby Gate (Fig. 1C) on Culgoa Floodplains National Park (NP). Malaise and Pitfall traps had been set at four sites on Culgoa Floodplains by CLL, Noel Starick and NP Ranger Cheryn Kelly in November 2009 as part of the Bush Blitz survey. The rangers had agreed to take monthly samples until we could return. This specimen was from a Malaise trap that had been reset on the 20th January 2010 by Ranger-In-Charge (RIC) Andy (Keith) Coward. Because of significant rain, the rangers were unable to return to take another sample until the 19<sup>th</sup> March. Subsequent flooding in March and April 2010 prevented access to the survey areas until mid-May when CLL, Noel, Rhys Smith (QM volunteer) and rangers Andy and Megan Simpson retrieved the Culgoa Floodplains NP traps. This species was similar to *Palirika bouchardi* Lambkin & Yeates, 2003 that has been extensively collected from arid areas of central and western Australia from all states except South Australia.

Previous phylogenetic analysis of the worldwide Exoprosopini showed that the Australian bombyliids that were previously placed in *Exoprosopa* Macquart 1840, belonged to the monophyletic *Balaana* group of genera, sister to the Australian *Ligyra* (Lambkin et al. 2003). Phylogenetic analysis of 207 morphological characters of the *Balaana* group of genera led to the description of seven new genera for 42 species in that genus-group in Lambkin et al. (2003). Phylogenetic analysis of the same 207 morphological characters scored for two *Ligyra* outgroup taxa and 40 Australian species belonging to the *Balaana* generic-group supports the placement of the three new species into existing genera, and the erection of the new genus *Ngalki* Lambkin gen. n. for *Ngalki trigonium* (Lambkin & Yeates, 2003), comb. n. (Figs 2, 3).

Revised keys are provided for the genera of the Australian *Balaana* genus-group and the species of *Palirika* and *Larrpana*. The three new species are fully described; with diagnoses, distribution maps, and images of both external characters and dissected genitalia. The new genus *Ngalki* is described with diagnosis, and images of both external characters and dissected genitalia. With the description of three new species and the transferral of *Munjua trigona* Lambkin & Yeates, 2003 into the new genus *Ngalki*, three genera are rediagnosed; *Munjua* Lambkin & Yeates, *Palirika* and *Larrpana*.

We attempted to use cybertaxonomic tools to produce this paper as had been used to streamline taxonomic publication of new fly species by Winterton (2009), Brake and von Tschirnhaus (2010), Blagoderov et al. (2010b), and Winterton and Gaimari (2011). Attempts to use the morphological phylogenetic matrix to produce natural language descriptions provided only clumsy, inadequate descriptions. Using Blagoderov et al. (2010a) as a guide we completed automatic generation of the manuscript within a Virtual Research Environment (Scratchpads). As the publication module in Scratchpads is still under development, semantic enhancements, and parallel release of the publication on paper and on-line accompanied with registration of new taxa with ZooBank (<http://www.zoobank.org/>) as per the recent proposed amendment to the *International Code of Zoological nomenclature* for a universal register for animal names (Polaszek et al. 2005a, 2005b; ICZN 2008) were completed through submission of a Microsoft Office Word 2003 document to ZooKeys.





**Figure 1.** Collection sites. **A** CLL showing Robyn Mackenzie the single female specimen of *Palirika mackenziei* sp. n. collected hill-topping on the summit of Tompilly Hill in late December 2007 **B** Tompilly Hill, a jump up on Plevna Downs, in extremely arid south-western Queensland **C** A single male specimen of *Palirika culgoafloodplainensis* sp. n. was collected during a Bush Blitz survey from this Malaise trap, 7 km NNW Toulby Gate on Culgoa Floodplains National Park (NP) on the Queensland/New South Wales Border, 134 km WSW Dirranbandi **D** Forrest lookout on Karara Pastoral Lease 213 km ESE of Geraldton in Western Australia, where two male specimens of *Larrpana bushblitz* sp. n. were hand netted hill-topping by CLL in September 2009 during a Bush Blitz survey. Photographs A and B by N. Starick, QM.

## Methods

### Taxonomic Methods

The following collection acronyms are used in the text: Australian Museum, Sydney, New South Wales, Australia (AM); Queensland Museum, South Brisbane, Queensland (QM); Western Australian Museum, Perth, Western Australia (WAM). Numbers quoted with individual specimens are unique identifiers (e.g. WAM 82396, T152479 (QM), K 253702 (AM)) from the respective institutions database and are attached under each specimen on a white label. A single hind leg was removed from one specimen of each species and placed into absolute ethanol for frozen tissue storage at QM for future DNA

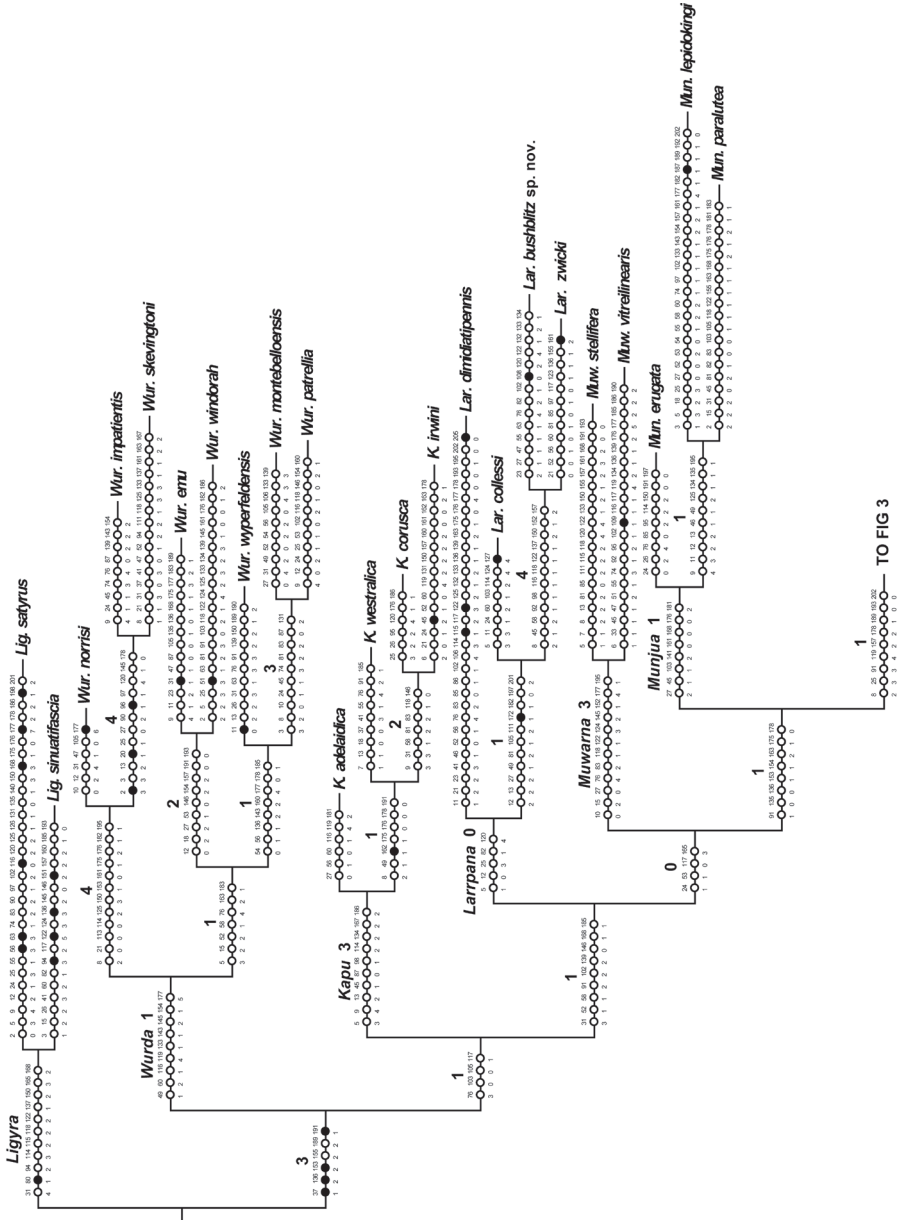
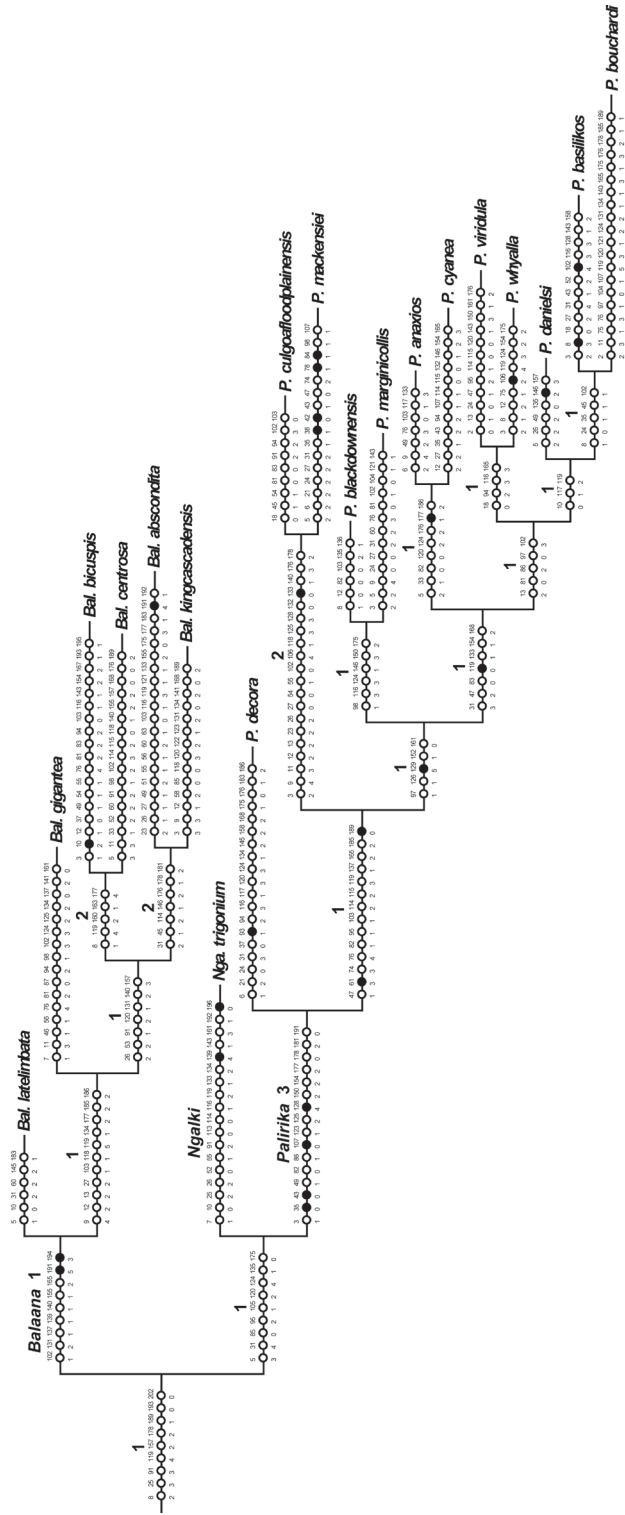


Figure 2. One of five most parsimonious cladograms (931 steps, CI = 0.24, RI = 0.47). Part 1. Black circles = unique character changes, open circles = homoplasious changes. Bremer supports over branches.



**Figure 3.** One of five most parsimonious cladograms (931 steps, CI = 0.24, RI = 0.47). Part 2. Black circles = unique character changes, open circles = homoplasious changes. Bremer supports over branches.

extraction. Those samples were given a tissue number (e.g. A007534) that was entered into the QM Vernon database and attached under each specimen on a yellow label.

For explanation of morphological abbreviations, see Appendix 1.

The genitalia of each species were prepared by dissecting the terminal abdominal segments and then placing in cool 10% KOH overnight. Following maceration the specimen was washed, and then dissected in distilled water. Dissected genitalia were placed in alcohol for microscopic examination and into K–Y Jelly for photography. All dissected parts from a specimen were placed in a genitalia vial containing glycerine which was pinned beneath the identification label.

Images were taken of the whole fly, external features, and dissected genitalia. A series of multiple-focal-depth digital images were taken using a Canon EOS 500D digital camera fitted, via a Leica 10446175 1x SLR Projection Lens, to a Leica MZ6 stereo dissecting microscope, and combined into a high resolution serial montage image using Helicon Focus v.5.2 Pro (Kozub 2011) or Zerene Stacker v.1.02 (Littlefield 2011). Higher-resolution digital images were deposited in Morphbank ([www.morphbank.net](http://www.morphbank.net)). Separate collections of images were created for each species in Morphbank where each collection receives a unique identifier and associated URL. The URL links to the Morphbank collections have been embedded within the descriptions for each species. Images were assembled into plates using Adobe Photoshop CS5 version 13.0.3 (Adobe Systems, 2010b) and Adobe Illustrator CS5 version 15.0.2 (Adobe Systems, 2010a). Those samples were given a photograph number (e.g. PS1714) that was entered into the QM Vernon database and attached under each specimen on a purple label.

Distribution maps were produced using ArcView GIS version 3.1 (ESRI, 1998).

We intended to use cybertaxonomic methods to document these newly discovered Australian beflies, enabling descriptions of the three new species to be generated using web resources to populate electronic documents through links to Morphbank, Life Science Identifiers, and Zoobank as had been done by Winterton (2009) whose revision serves as an example for making taxonomic description and key development more efficient by avoiding redundancy in data handling and using digital media. We hoped to complete taxonomic descriptions using a character matrix in Structured Descriptive Data format developed in Lucid Builder to simultaneously generate natural language descriptions and a key. However we encountered problems transferring the compiled phylogenetic data matrix to Lucid. Instead MacClade 4 (Maddison and Maddison 2003) was used to generate natural language descriptions based on a phylogenetic matrix including 413 phylogenetic (morphological) and phenetic (colour) characters. The resultant descriptions were clumsy and inadequate. Instead, we developed descriptions in Microsoft Office Word 2003 based on the electronic versions of closely related described species from Lambkin et al. (2003).

Several initiatives around the world have been developing tools to bring revisionary taxonomy to the web. Recent examples include software produced through the CATE (Creating a taxonomic e-science, <http://www.cate-project.org>), EDIT (European Distributed Institute of Taxonomy, <http://www.e-taxonomy.eu>) and the Australian TRIN (Taxonomy Research & Information Network, <http://www.taxonomy.org.au/>) projects.



These efforts support the compilation of large distributed datasets, descriptions and identification of biota. One of the tools developed in association with the EDIT initiative are the Scratchpads (<http://scratchpads.eu>), a Web 2.0 Virtual Research Environment, that enable taxonomists to collaborate in the production of websites documenting the diversity of life. Using Blagoderov et al. (2010a) as a guide we set up the Australasian Asiloidea Online Scratchpad (<http://australasianasiloidea.myspecies.info/>). We initially included for public view the published diagnoses of genera and species of the Exoprosopini (Bombyliidae: Anthracinae) and the *Taenogera* genus-group (Therevidae: Agapophytinae). Pages including images, diagnoses, and descriptions were established for each of the undescribed species in the Australasian Asiloidea Online Scratchpad, but hidden from public view until publication.

The paper has been semantically tagged and enhanced using the Pensoft Mark Up Tool (PMT) which is based on the US National Library of Medicine's DTD (Document Type Definitions) TaxPub extension <http://sourceforge.net/projects/taxpub>. We intend parallel release of the publication on paper and on-line accompanied by a) links to archived images on Morphbank, and b) with registration of authors, publications, taxon names and other nomenclatural acts in Zoobank, with assignment of Life Science Identifiers (LSIDs) for each new taxa as per the recent proposed amendment to the *International Code of Zoological* nomenclature for a universal register for animal names (Polaszek et al. 2005a; Polaszek et al. 2005b; ICZN 2008). The final XML output of the paper will be archived in PubMedCentral, a PDF uploaded in the Biodiversity Heritage Library (BHL), and all revised species registered in ZooBank (Penev et al. 2010).

## Data resources

The nomenclatural and distributional information will be included in the Australian Faunal Directory (AFD), an open-access online catalogue of taxonomic and biological information on all animal species known to occur within Australia (ABRS, 2009), and the Australian Natural Heritage Assessment Tool (ANHAT), an open-access online map-supported database developed by the Australia Heritage Division of the Department of Sustainability, Environment, Water, Population and Communities that helps identify and prioritise areas for their natural heritage significance, focusing on biodiversity (NHAS 2009). The occurrence data has been uploaded as a Darwin Core Archive (DwC-A), to the Global Biodiversity Information Facility (GBIF) via the Pensoft Data Hosting Center at the GBIF's Integrated Publishing Toolkit (IPT) (<http://ipt.pensoft.net/ipt/>). The data underpinning the analysis reported in this paper including the data matrix and a most parsimonious tree, together with matrices and trees from Lambkin et al. (2003), were deposited in the Dryad Data Repository (<http://datadryad.org/>) at doi: 10.5061/dryad.5j64k, the TREEBASE Repository ([www.treebase.org/](http://www.treebase.org/)) at <http://purl.org/phylo/treebase/phyloids/study/TB2:S12050>, and at GBIF, the Global Biodiversity Information Facility, <http://ipt.pensoft.net/ipt/resource.do?r=bushblitz>

## Phylogenetic analysis

Phylogenetic analysis was based on 207 morphological characters from Lambkin et al. (2003) (Appendix 1). The three new taxa were added to the data matrix from Lambkin et al. (2003) and scored for external morphology including wing venation, and internal morphology of male and female genitalia to produce a matrix for two *Ligyra* outgroup taxa and 40 Australian species belonging to the *Balaana* generic-group in Mesquite version 2.74 (Maddison and Maddison 2010) (Appendix 2 & Appendix 3 LambkinOzBombs2011.nex).

Multistate characters used for phylogenetic analyses have been treated as unordered (non-additive Mickevich and Mitter 1981; Mickevich and Weller 1990). All synapomorphies were weighted equally (Farris 1990). Character polarity was determined by comparison with the outgroups. Variation in morphology between specimens of a taxon was scored as polymorphism and interpreted in the cladistic analyses as “partial uncertainty” (Swofford and Begle 1993) where PAUP\* chooses a state from the set of available states that allows minimization of the tree length. There are 66 constant characters in the analysis as the morphological data matrix was based on coding of a much broader taxon sample of 107 worldwide exoprosopine taxa for 207 morphological characters used in Lambkin et al. (2003).

Phylogenetic analyses completed 100 random step-wise addition searches, with tree-bisection-reconnection (TBR) branch swapping, MULPARS, and branches having maximum length zero collapsed to yield polytomies in effect using PAUP\*4.0b10 (Swofford, 2002).

We used Bremer support (Bremer 1992; Källersjö et al. 1992; Bremer 1994) to measure the strength of evidence for nodes. Bremer support of a group is the difference in length between the tree under consideration and the shortest tree lacking that group. Bremer support values were calculated with TreeRot v.2 (Sorenson 1999) with 20 heuristic searches of the data.

Cladograms and character distribution were analysed in WinClada version 1.00.08 (Nixon 2002) and edited in Adobe Illustrator CS5 version 15.0.2 (Adobe Systems 2010a).

## Results

Cladistic analysis of the 42 taxa of 141 non-constant characters produced five most parsimonious trees (MPTs) of length =931, CI = 0.243, CI excluding uninformative characters = 0.231, and RI = 0.468. The five trees differ only in the placement of *Larrpana dimidiatipennis* (Bowden, 1971); as sister to the remaining *Larrpana*, sister to *Muwarnia* Lambkin & Yeates, 2003, or sister to the *Balaana* genus-group excluding *Wurda* Lambkin & Yeates, 2003 and *Kapu* (Lambkin & Yeates, 2003). Most parsimonious tree 5 was chosen with reference to the majority-rule consensus tree (Margush and McMorris 1981) as the MPT included those nodes that were found most often in the remaining MPTs. Most parsimonious tree 5 is shown in two parts



in Figures 2 and 3 with unambiguous changes on the branches, generic names and Bremer Supports above the branches.

Previous phylogenetic analysis of 207 morphological characters for the worldwide Exoprosopini showed that the Australian bombyliids that were previously placed in *Exoprosopa*, belonged to the monophyletic *Balaana* group of genera, sister to the Australian *Ligyra*. Phylogenetic analysis of characters of the *Balaana* group of genera then led to the description of seven new genera for 42 species in that genus-group (Lambkin et al. 2003). Phylogenetic analysis of the same 207 morphological characters for two *Ligyra* outgroup taxa and 40 Australian species supports the placement of the three new species into existing genera in the *Balaana* generic-group. *Palirika mackenziei* sp. n. and *Palirika culgoafloodplainensis* sp. n. form a clade within the well supported genus, *Palirika* and *Larrpana bushblitz* sp. n. forms a clade with *Larrpana zwicki* within the genus *Larrpana* (Figs 2, 3).

In Lambkin et al. (2003), *Munjua* was erected for three unusual species for which there were few apparent similarities. In that phylogenetic analysis, another particularly aberrant fly, *Munjua trigona* (Fig. 9A, B), was sister to the clade of *Munjua* and the two well-supported terminal clades of *Palirika* and *Balaana* Lambkin & Yeates, 2003. This fly clearly did not belong to either *Palirika* or *Balaana* as it possessed none of their diagnostic characters, and was therefore placed in the already heterogeneous *Munjua* rather than creating a monotypic genus (Lambkin et al. 2003).

In this phylogenetic analysis, *Munjua trigona* falls between *Palirika* and *Balaana* as sister to *Palirika* (Figs 2, 3). As this species clearly does not belong to *Palirika*, a new genus *Ngalki* for *Ngalki trigonium* is created.

With the description of the three new species and the transferral of *Munjua trigona* into the new genus *Ngalki*, the three genera *Munjua*, *Palirika*, and *Larrpana* require rediagnoses.

## Taxonomy

### *Palirika* Lambkin & Yeates, 2003

urn:lsid:catalogueoflife.org:taxon:d916e5f0-29c1-102b-9a4a-00304854f820:col20110201  
<http://species-id.net/wiki/Palirika>

**Type species:** *Palirika decora*, Lambkin & Yeates, 2003: 812.

**Rediagnosis.** Small black, rounded, dense, adpressed metallic scales dorsally on thorax and abdomen (Fig. 6D); no abdominal white scales, sternal vestiture black, not metallic. Epandrium rounded, strongly curved, red, extended smoothly basolaterally (Fig. 4E, F). Gonocoxae deeply narrowed medially, with thickened setae ventromedially, tuft of 6–8 very long, basally-directed, thick setae medially; H projecting in lateral view; EP without lateral lobes, medial projection laterally; LAEA large, convex, extending to G margin; EJA racquet-shaped, longer than the length of G (Fig. 5). Female T<sub>8</sub> A little more than marginal thickening (Fig. 6F), spermathecal tube more than 8 × length of SP, clear thick-walled ring joining clear thick-walled BB and pigmented subquadrate SR.

Included species: *Palirika anaxios* Lambkin & Yeates, 2003, *Palirika basilikos* Lambkin & Yeates, 2003, *Palirika blackdownensis* Lambkin & Yeates, 2003, *Palirika bouchardi*, *Palirika culgoafloodplainensis* sp. n., *Palirika cyanea* Lambkin & Yeates, 2003, *Palirika danielsi* Lambkin & Yeates, 2003, *Palirika decora*, *Palirika mackenziei* sp. n., *Palirika marginicollis* (Gray, 1883), *Palirika viridula* Lambkin & Yeates, 2003, *Palirika whyalla* Lambkin & Yeates, 2003.

***Palirika culgoafloodplainensis* Lambkin, sp. n.**

urn:lsid:zoobank.org:act:85D57E72-0396-4994-8CF6-7C22B5BAC978

[http://species-id.net/wiki/Palirika\\_culgoafloodplainensis](http://species-id.net/wiki/Palirika_culgoafloodplainensis)

Figs 1C, 2–3, 4–5, 11; Morphbank Collection 692336

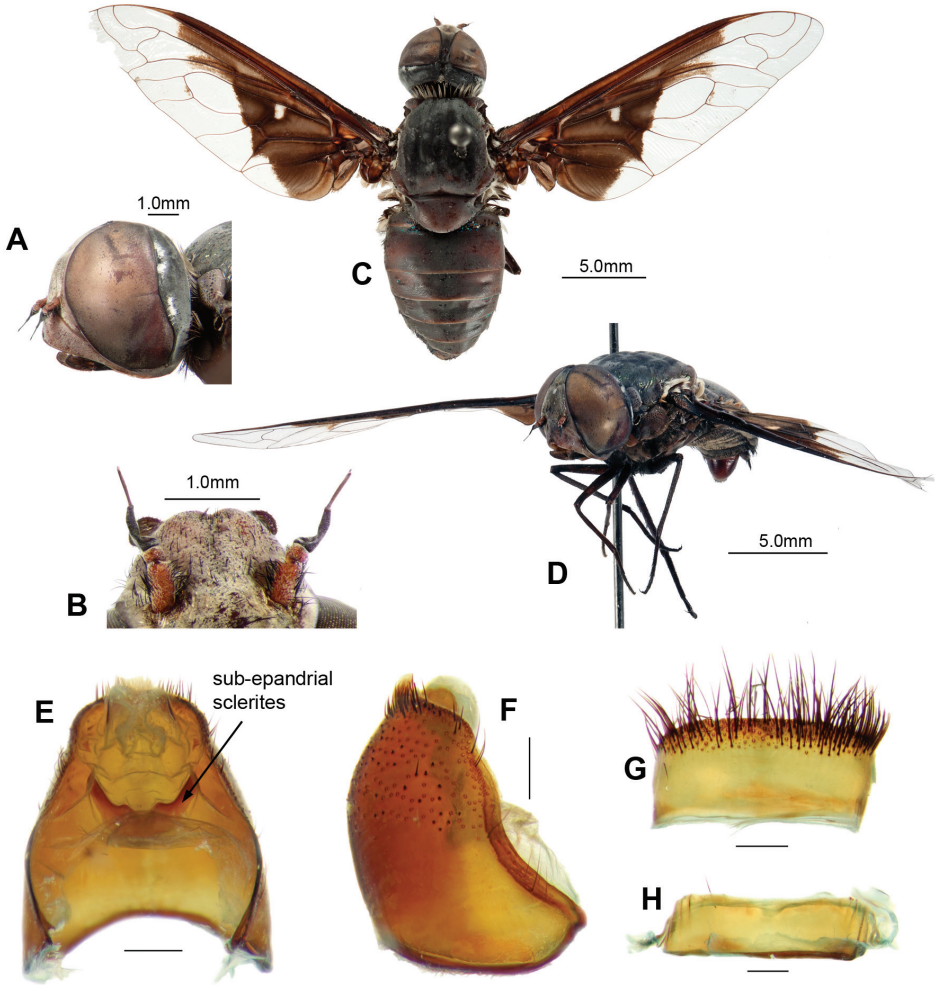
**Material examined.** *Holotype.* **Queensland:** ♂, 28.94°Sx146.918°E, Culgoa Floodplain NP, 7km NNW Toulby Gate, 160m, (CG4AM), Malaise, 20Jan–19Mar2010, C. Kelly, A. Coward, 19273, [dissected], PS1937, A006859, T165704 (QM). Condition: Fair (see remarks below).

**Diagnosis.** Wing length 20.0 mm

Large dark flies with distinct triangular basal infuscation on the wings wings. Face and frons with transparent scales. Occiput with white scales broadly filling indentation. Collar whitish-cream. Broad laterothoracic stripe of dense white flattened scales. Scutum black with lime-green metallic scales except pink metallic scales anterolaterally to PR bristles and posterolaterally anterior to APA. Scutellum with lime-green metallic scales; very long, white, flattened-scale fringe on posterior margin. Widened base of costa with reddish-brown scales, white scales posteriorly. Wing pattern dimidiate (Fig. 4C); with distinct indentation base of first  $r_{2+3}$ ; extension along  $R_{4+5}$ , covering basal 1/3 of first  $r_{2+3}$  and  $r_5$ ; indistinct mottling base of  $m_1$  along m-m; no infuscated band; anal and posterior cells with apically notched hyaline area, infuscation extending along  $CuA_2$ ; cup infuscated basal 4/5; anal infuscated basal 2/3. Squama edged with dense white scales admixed with some reddish-brown scales.  $T_1$  with Ma white dorsally, black medially and ventrally, dense very long flattened white scales posterolaterally. Abdominal tergites black with bluish-green scales. Epandrium with long setae grouped loosely apically. Epiphallus with short, medial projection. G with long black setae medially, directed basally, longest on weak ventral ridge; LAEA very large, extending well beyond G margins.

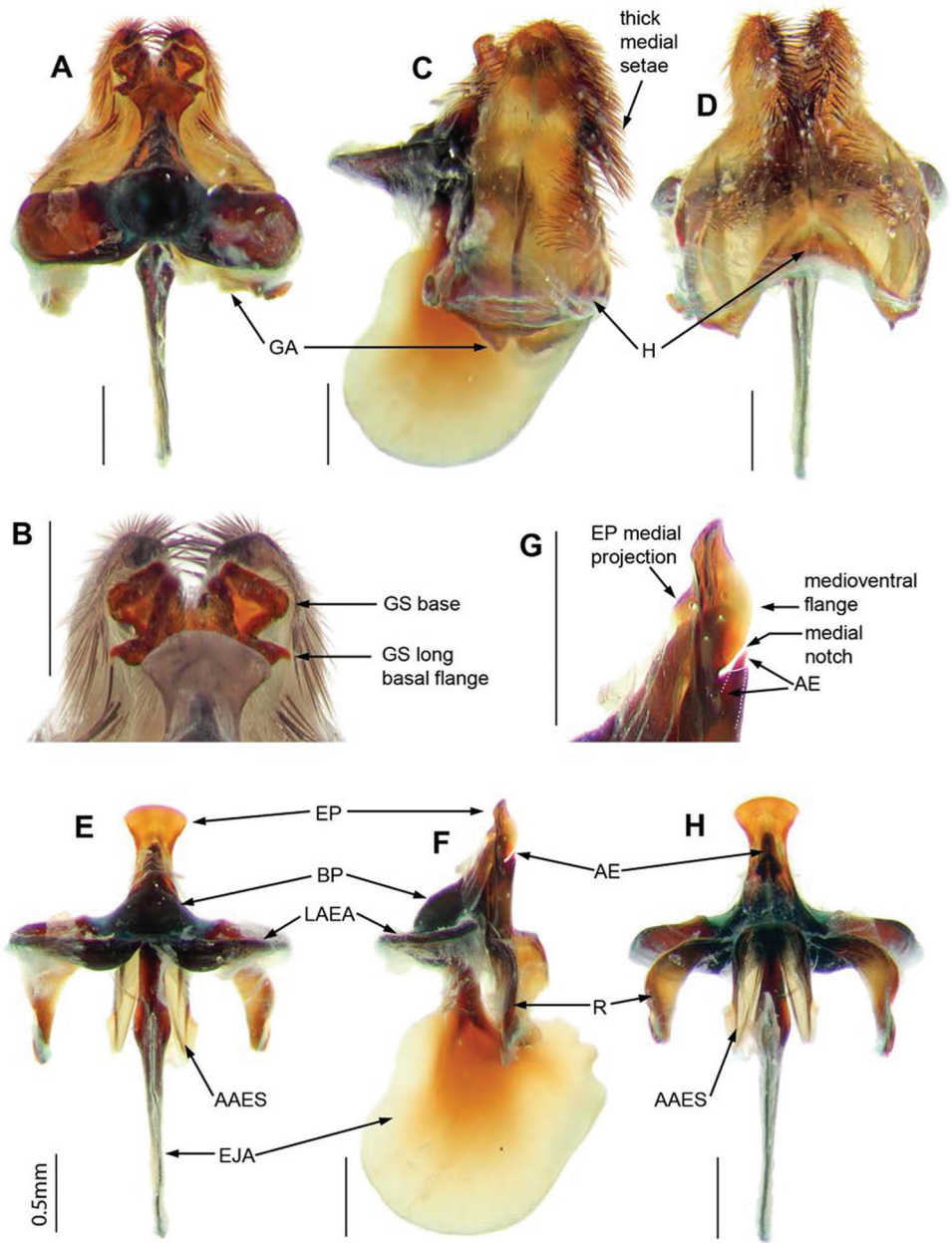
**Description.** *Male. Head* (Figs 4A–D). Face red with transparent scales, frons brown with transparent scales; setae black, frontal depression distinct. Antennal scape red,  $3 \times$  length of pedicel, with long black setae dense laterally and ventrally; pedicel red; PP black, conical,  $3 \times$  length of pedicel, distinct apical joint; BSM rod-like, black,  $3 \times$  length of pedicel; ASM black, conical, length at least width of BSM (Fig. 4B). Occiput with white scales broadly filling indentation (Fig. 4A).

*Thorax.* (Figs 4C–D). Collar whitish-cream. Broad laterothoracic stripe of dense white flattened scales (Fig. 4D). Scutum black with lime-green metallic scales except



**Figure 4.** *Palirika culgoafloodplainensis* sp. n., Male holotype. **A** Head lateral **B** Antennae dorsal **C** Adult, dorsal **D** Adult, antero-lateral; Male genitalia: **E** Epandrium ventral with sub-epandrial sclerites **F** Epandrium lateral **G** T<sub>8</sub>, dorsal **H** S<sub>8</sub>, ventral. Scale line (E–H) = 0.5 mm.

pink metallic scales anterolaterally to PR bristles and posterolaterally anterior to APA; black setae. Pleural hairs black with reddish-brown iridescence. AN with black Ma; long, lightly iridescent scales at base of wing reddish-brown; long flat broad pale brown scales posteromedially. K with very long fine reddish-brown scales medially. Ma on LT black with reddish-brown iridescence. Tympanal ridge and PL with dense very long fine white flattened scales. Scutellum red, darker basally with lime-green metallic scales; very long, white, flattened-scale fringe on posterior margin. *Legs.* Legs reddish-brown, darkening apically, with black scales and setae, tarsi dark reddish-brown to black; fore-tarsi with straight microtrichia. Pulvilli sharp, curved, 1/3 length of mid- and hind-tarsal claws. Halter knob reddish-brown with apical margin yellow. *Wing* (Fig. 4C), cup nar-



**Figure 5.** *Palirika culgoafloodplainensis* sp. n., Male holotype genitalia: **A** Gonocoxal complex dorsal **B** Gonocoxal complex lateral **C** Gonocoxal complex ventral **D** Gonostyli **E** Adeagal complex dorsal **F** Adeagal complex lateral **G** Epiphallus lateral **H** Adeagal complex ventral. Scale line = 0.5 mm.

rowly open or closed only at wing margin. Patagium distinct with dense white long flat scales. Widened base of costa with reddish-brown scales, white scales posteriorly. Wing pattern dimidiate (Fig. 4C); with distinct indentation base of first  $r_{2+3}$ ; extension along  $R_{4+5}$ , covering basal 1/3 of first  $r_{2+3}$  and  $r_5$ ; indistinct mottling base of  $m_1$  along m-m; no infuscated band; anal and posterior cells with apically notched hyaline area, infuscation extending along  $CuA_2$ ; cup infuscated basal 4/5; anal infuscated basal 2/3. Anal basal edge with dense black scales; alula edged with dense reddish-brown scales; squama edged with dense white scales admixed with some reddish-brown scales.

*Abdomen.* Black,  $T_{1-4}$  dark reddish-brown posterolaterally; tergites with bluish-green scales;  $T_1$  with  $Ma$  white dorsally, black medially and ventrally, dense very long flattened white scales posterolaterally;  $T_{2-7}$  with tufts of long, black setae laterally and posteriorly. Sternites black with dark reddish-brown scales and hairs. *Genitalia* (Figs 4E–H, 5A–H). Epandrium strongly convex, red with convex apical margin; tapering basal flange; long, black setae loosely grouped apically; SES large, fused medially (see Fig. 4E). Gonocoxae red, narrowed apically; GA short, triangular; thick tufts of long black setae medially, directed basally, longest on weak ventral ridge (Fig. 5C); EJA very large, extending well beyond gonocoxal margins, racquet-shaped; LAEA very large, extending well beyond G margins, deeply convex (Fig. 5A); AAES strong wedges (Fig. 5E, H); GS (Fig. 5B) cupped within G margins, large subquadrate base projecting apically; EP long, expanded slightly apically, without lateral lobes, short medial projection; medioventral flange above AE present (Fig. 5G); large recurved R (Fig. 5F, H); H triangular, projecting slightly in lateral view (Fig. 5C).

*Female.* Unknown.

**Etyymology.** This species is named *culgoafloodplainensis* after the remote Queensland Culgoa Floodplain National Park where the type specimen was collected, and where CLL and Noel Starick received so much hospitality, enthusiasm, and encouragement over the years from all the staff, but especially RIC Andy Coward.

**Distribution.** (Fig. 11). This species has only been collected from the type locality in central south-western Queensland.

**Remarks.** Due to extended storage in propylene glycol as retrieval of sample was prevented by extensive and prolonged flooding the specimen bears few setae, hairs or scales, therefore colour patterns referred to in the description are based on those remaining, usually at junctions of sclerites.

***Palirika mackenziei* Lambkin, sp. n.**

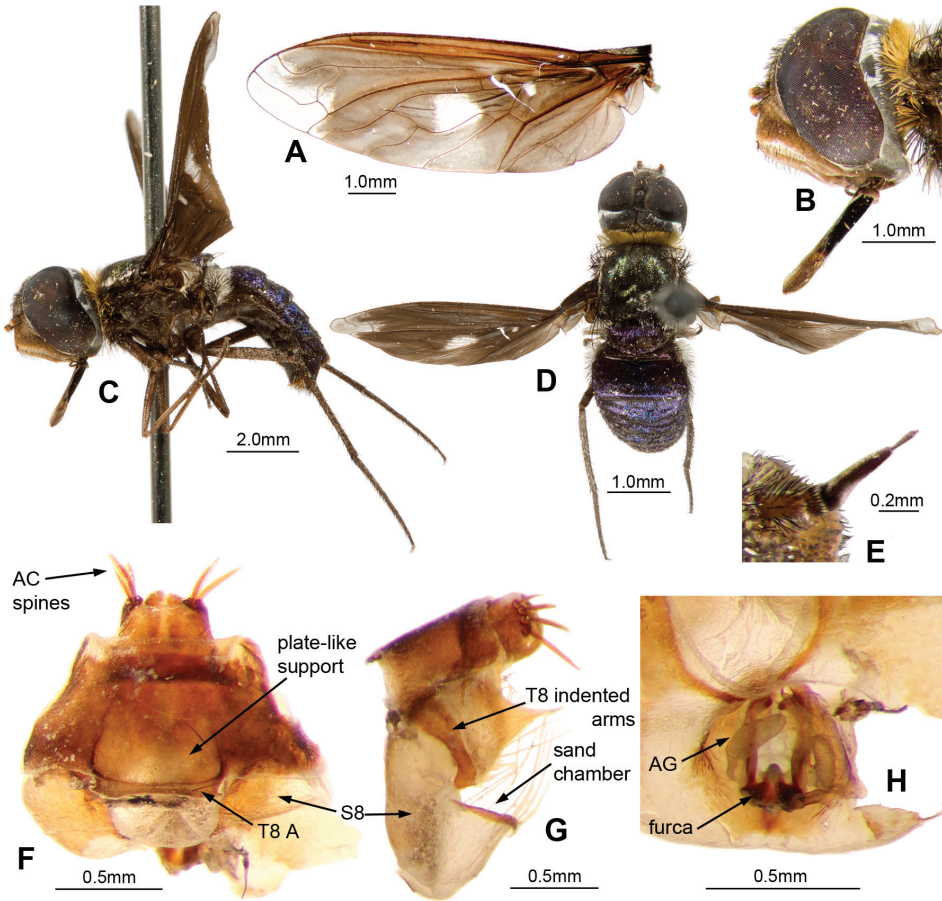
urn:lsid:zoobank.org:act:CD50600C-901E-46CA-840F-D4FEA863AF0E

[http://species-id.net/wiki/Palirika\\_mackenziei](http://species-id.net/wiki/Palirika_mackenziei)

Figs 1A–B, 2–3, 6, 11; Morphbank Collection 692335

**Material examined.** *Holotype.* **Queensland:** ♀, 26°43.7'S, 142°39.1'E, Plevna Downs, Tompilly Hill summit, 13 Dec 2007, C. Lambkin, N. Starick & R. Mackenzie, 15454, sweep net, hilltopping, 220m, [dissected], PS1893, A007533, T152481 (QM). Condition: Good.





**Figure 6.** *Palirika mackenziei* sp. n., Female holotype. **A** Wing **B** Head lateral **C** Adult, lateral **D** Adult, dorsal; Male genitalia: **E** Antennae lateral; Genitalia: **F** Dorsal **G** Lateral **H** Dorsal, furca.

**Diagnosis.** Wing length 9.0 mm.

Small dark flies with heavily infuscated wings, hyaline only apically and medial spot. Face orange with shiny reddish-brown scales, frons black with shiny black scales. Collar yellow. Narrow laterothoracic stripe of whitish scales. Scutum black with dull lime-green metallic scales except pinkish metallic scales anterolaterally and posteromedially. Scutellum dark brown, darker basally with royal-blue metallic scales, purple metallic scales laterally and posteriorly. Widened base of costa with shiny reddish-brown scales, no paler scales posteriorly. Wing pattern broadly dimidiate (Fig. 6A); black with hyaline areas, apically and medially. Apical hyaline area covering extreme apex of  $r_1$ , apex of first  $r_{2+3}$ , apical half of second  $r_{2+3}$ , all  $r_4$ , and extreme apex  $r_5$ . Medial hyaline area covering middle of dc extending from  $M_1$  across m-cu and into  $m_2$ . Paler prediscoidal opaque area distinct. Alula and squama edged with long broad grey scales.  $T_1$  with white Ma;



long white flattened scales posterolaterally. Tergites black with royal-blue metallic scales that reflect purple (Fig. 6D). Female  $T_8$  A short, plate-like support distinct.

**Description.** *Female. Head.* (Figs 6B–E). Face orange with shiny reddish-brown scales, frons black with shiny black scales; setae black, longest below distinct frontal depression. Antennal scape red,  $3 \times$  length of pedicel, with long black setae dense laterally and ventrally; pedicel red with black setae shorter and sparser dorsally; PP conical,  $5 \times$  length of pedicel, black with silvery pruinescence, distinct apical joint; BSM rod-like, expanded apically, reddish-brown,  $2 \times$  length of pedicel; ASM reddish, conical, length less than width of BSM (Fig. 6E). Occiput with shiny black scales broadly filling indentation.

*Thorax.* (Figs 6B–D). Collar yellow. Narrow laterothoracic stripe of whitish scales. Long white flattened scales posteromedially. Scutum black with dull lime-green metallic scales except pinkish metallic scales anterolaterally and posteromedially; black setae. AN with black Ma, long yellow setae anteriorly; long, lightly iridescent scales at base of wing black. Prealar bristles strong, black and long. Postalar bristles strong, black and reaching almost apex of scutellum. Pleural hairs black with reddish iridescence. Ma of LT black, reddish-brown dorsally. Tympanal ridge and PL with yellowish flattened scales. Scutellum dark brown, darker basally with royal-blue metallic scales, purple metallic scales laterally and posteriorly; strong, black apical bristles. *Legs.* Reddish-brown, tarsi darker; scales and setae black. Pulvilli sharp, curved, half length of mid- and hind-tarsal claws. Halter knob dark reddish-brown, posteromedial edge broadly yellow. *Wing* (Fig. 6A), cup open. Widened base of costa with shiny reddish-brown scales, no paler scales posteriorly. Wing pattern broadly dimidiate; black with hyaline areas, apically and medially. Apical hyaline area covering extreme apex of  $r_1$ , apex of first  $r_{2+3}$ , apical half of second  $r_{2+3}$ , all  $r_4$ , and extreme apex  $r_5$ . Medial hyaline area covering middle of dc extending from  $M_1$  across m-cu and into  $m_2$ . Paler prediscal opaque area distinct. Anal edged with long black scales basally. Alula edged with long broad grey scales. Squama edged with dense overlapping long grey scales.

*Abdomen.* (Figs 6C–D).  $T_1$  with white Ma; long white flattened scales posterolaterally. Tergites black with royal-blue metallic scales that reflect purple when not viewed dorsally, pleura with lateral tufts of long black setae on  $T_{2-7}$ . Sternites black, with black scales and setae. *Genitalia* (Fig. 6F–H). Dorsal  $T_8$  A short, plate-like support distinct;  $T_{10}$  with 4 pairs of stout AC spines. Furca with 2 long broad posteriorly directed arms with small recurved hook-like dorsal extensions apically.

*Male.* Unknown.

**Etymology.** This species is named *mackenziei* to acknowledge the enthusiasm and interest in all kinds of natural history by the Mackenzie family of Plevna Downs Station where the type, and only, specimen was collected. Since 2007, following the discovery of dinosaurs on their property, together with a large undescribed spider, CLL and Noel Starick have been welcomed by the Mackenzie family. Robyn Mackenzie was thrilled to be helping catch hill-topping beeﬂies on the summit of Tompilly Hill when the only female specimen of this unusual *Palirika* was captured (Fig. 1A). We have happily instructed the family, the local Natural History Society, students, teachers,

regional property owners and community members on the ins and outs of biodiversity of arid areas, especially the insects.

**Distribution.** (Fig. 11). This species has only been collected from the type locality in remote far south-western Queensland.

### ***Larrpana* Lambkin & Yeates, 2003**

urn:lsid:catalogueoflife.org:taxon:d9155668-29c1-102b-9a4a-00304854f820:col20110201

<http://species-id.net/wiki/Larrpana>

**Type species:** *Exoprosopa dimidiatipennis* Bowden, 1971: 64.

**Rediagnosis.** Dimidiate wing pattern as in Figure 7A–B, dark basally, hyaline apically; infuscation forming a distinctly separated, basal triangle leaving the apex of the posterior cubital and anal cells broadly hyaline. Cream laterothoracic stripes, white scale bands on T<sub>3</sub>, sparse white scales on T<sub>6-7</sub>. Epandrial basolateral flange longer and broader than the length of the epandrial base. Gonocoxae deeply narrowed medially, tufts of thickened setae on distinct ventral flange that projects basally; EP with rounded, projecting, lateral lobes; short, wedge-shaped AAES; EJA long. Sperm pump long with unpigmented papillae, collar or clear ring surrounding join between BB and thick-walled round SR.

Included species: *Larrpana bushblitz* sp. n., *Larrpana dimidiatipennis*, *Larrpana collessi* Lambkin & Yeates, 2003, *Larrpana zwicki*.

### ***Larrpana bushblitz* Lambkin sp. n.**

urn:lsid:zoobank.org:act:1CFF61E9-10C6-4185-8135-CDA4DAEB69A9

[http://species-id.net/wiki/Larrpana\\_bushblitz](http://species-id.net/wiki/Larrpana_bushblitz)

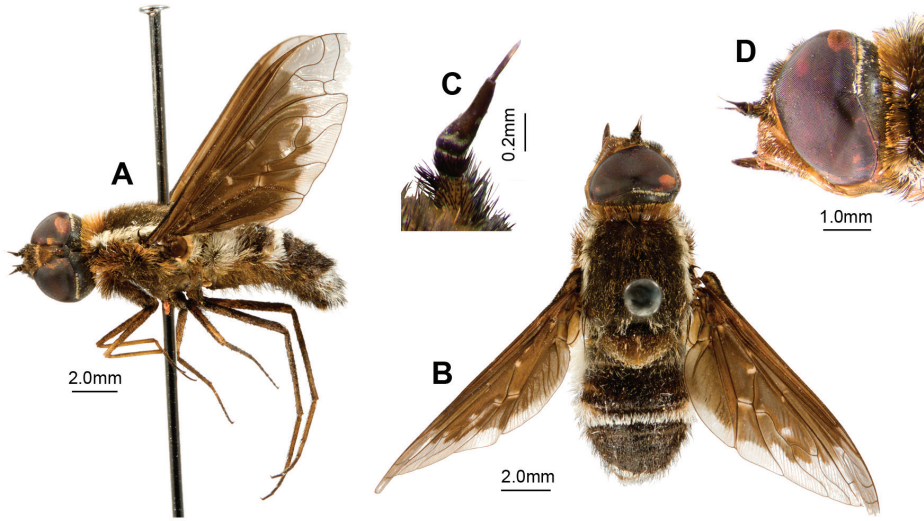
Figs 1D, 2–3, 7–8, 11; Morphbank Collection 692334

**Material examined.** *Holotype.* **Western Australia:** ♂, 29.302°S × 116.725°E, Karara, 23.5km ESE Boiada Camp, 356m, 17 Sep 2009, Lambkin, sweeping, 18402, rocky hilltop, hilltopping, PS1714, WAM 82396 (WAM). Condition: Good.

*Paratypes.* **Western Australia:** 1♂, same data as holotype, T152479 (QM); 1♂, 29.309°S × 116.731°E, Karara, Forest lookout, 24.4km SE Boiada Camp, 17 Sep 2009, 18405, Lambkin, sweeping, 410m, rocky hilltop, hilltopping, [dissected], PS1894, WAM 82397 (WAM); 1♂, same data Forest lookout, A007534, T152480 (QM).

**Diagnosis.** Wing length 14 mm

Medium, dark, densely setose, flies with black, dimidiate wings with five indistinct yellowish spots (Fig. 7A, B); infuscation indented in 1st r<sub>2+3</sub>; no lobe or medial band; dc infuscated except for rectangular hyaline area at junction of m-cu and m-m. Thoracic collar yellow. Dorsal surface of thorax, scutellum and abdomen covered with long upstanding setae, producing distinct fluffy appearance. T<sub>3</sub> with uninterrupted white band of upstanding scales narrowing medially, laterally spanning entire tergite. Alula and squama edged with dense long cream scales; proximal 1/3 of anal cell edged with

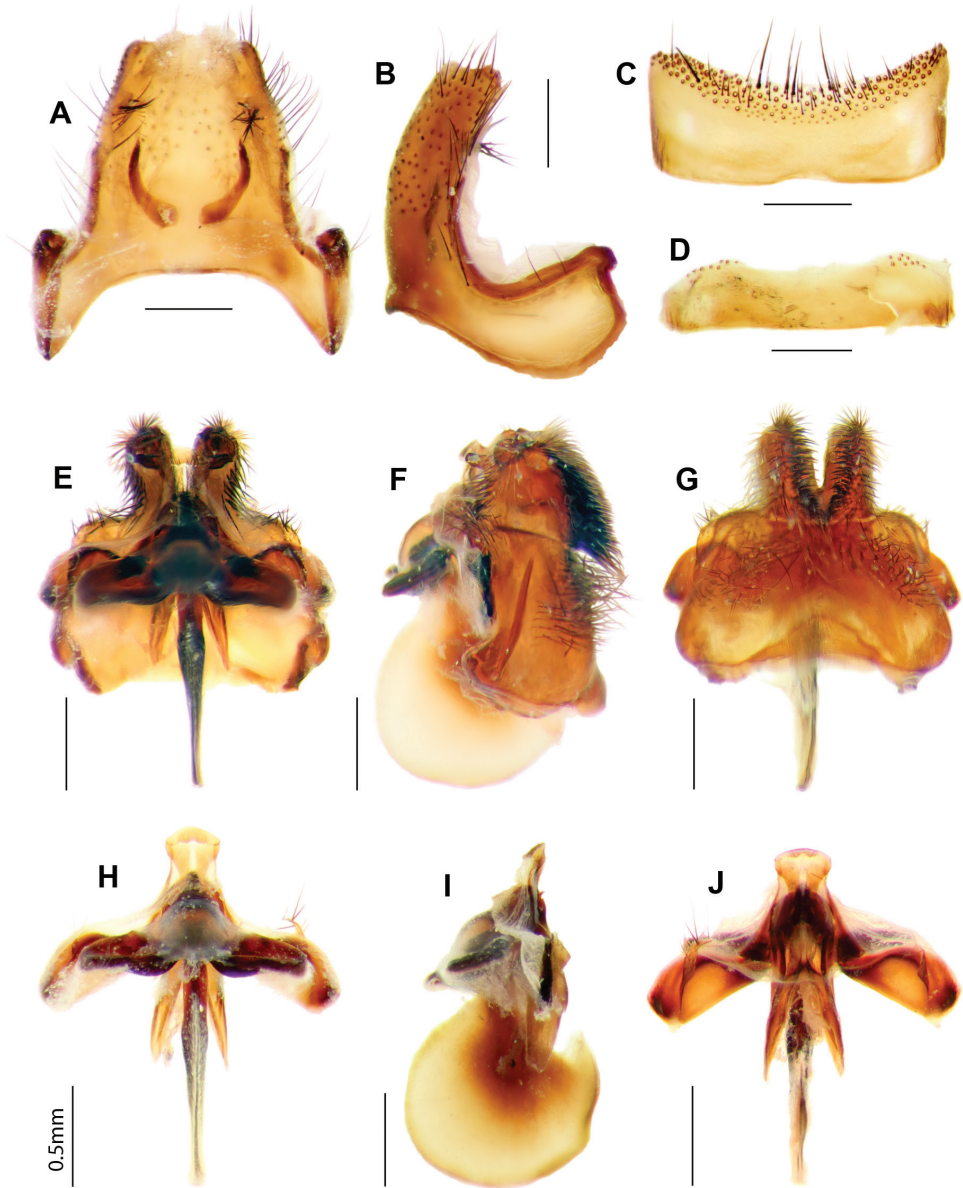


**Figure 7.** *Larrpana bushblitz* sp. n.. **A** Adult, lateral **B** Adult, dorsal **C** Antennae dorsal **D** Head lateral.

black scales, longest basally. Male (Fig. 8) E with basal flange very long, broad, extending basally, apically recurved. H large, subquadrate in lateral view, distinctly projecting.

**Description.** *Male. Head* (Fig. 7A–D). Frons reddish-brown, face red, face and frons with transparent scales, black setae longest below shallow frontal depression. Antenna (Fig. 7C). Scape  $2.5 \times$  length of pedicel, red; pedicel red; PP long,  $3\text{--}4 \times$  length of pedicel, as long as scape and pedicel combined, dark reddish-brown, with reddish pruinescence; BSM dark reddish-brown,  $2 \times$  length of pedicel, not expanded apically; ASM minute blunt cone, length less than width of BSM. Narrow band of cream scales at posterior margin of eye medially.

*Thorax* (Fig. 7A, B). Collar yellow. Very broad distinct laterothoracic stripe of dense long white scales. Scutum black; scales long, reddish-brown, white posteriorly; long dense black setae, longest anteriorly and posteriorly. AN and PN with Ma admixed black and reddish-brown; long, slightly iridescent, reddish-brown scales at base of wing. Pleural hairs black, with reddish-brown iridescence. Scales on APA white. Laterotergite with dark reddish-brown Ma ventrally, white dorsally and red medially. Plumula with dense long white scales and TR with dense long yellow scales. Scutellum dark reddish-brown, black basally; scales black basally, transparent pale-brown medially and posteriorly, posterior scales longest; long dense, black setae. Legs reddish-yellow with black scales. Microchaetae on fore-tarsi curved apically. Pulvilli straight sharp cones, more than  $1/3$  length of mid- and hind-tarsal claws. Halter knob red with pale whitish apical edge. *Wing* (Fig. 7A, B). Widened base of C with black scales with pale band posteriorly. Spur-veins present on base of  $R_4$  extending into  $r_4$  and on apex of m-cu extending into  $m_2$  in some specimens; bump at basal bend of m-cu. Wing pattern (Fig. 7A, B) black, dimidiate, broad basal infuscation following R proximal to  $i\text{-}r_1$  to wing margin in apical  $4/5$  anal cell; indented in  $1st\ r_{2+3}$ ; no lobe or medial band;



**Figure 8.** *Larrpana bushblitz* sp. n. Male genitalia: **A**) Epandrium ventral with sub-epandrial sclerites **B**) Epandrium lateral **C**)  $T_8$ , dorsal **D**)  $S_8$ , ventral; Male genitalia: **E**) Gonocoxal complex dorsal **F**) Gonocoxal complex lateral **G**) Gonocoxal complex ventral **H**) Adeagal complex dorsal **I**) Adeagal complex lateral **J**) Adeagal complex ventral. Scale line = 0.5 mm.

dc infuscated except for rectangular hyaline area at junction of m-cu and m-m; apex hyaline. Dark yellowish-brown areas bordering base of  $CuA_1$ , join of  $R_1$  and  $R_3$ , r-m continuing onto base of  $R_{2+3}$ , and base m-cu; together with predisoidal opaque area

forming indistinct pentagonal pattern of spots within infuscation. Anal and cup infuscated for basal 4/5. Alula and squama edged with dense long cream scales; proximal 1/3 of anal cell edged with black scales, longest basally.

**Abdomen.** (Fig. 7A, B). Tergites black with red anterolateral areas medially rounded on  $T_{2-3} < 1/4$  width of tergite. Scales dense, black except:  $T_3$  with uninterrupted white band of upstanding scales narrowing medially, laterally spanning entire tergite;  $T_{1-3}$  with dense long white upstanding lateral scales;  $T_{6-7}$  with white scales.  $T_1$  with Ma white dorsally and laterally, yellow ventrally.  $T_{1-3}$  with long dense white setae laterally, pale brown anteriorly, and black posteromedially;  $T_{4-7}$  with long dense thick black setae. Sternites red with sparse long pale reddish scales, dense long black setae. **Genitalia** (Fig. 8). Epandrium red with distinct anterolateral flange bearing cluster of long black setae; basal flange very large, long, broad, extending basally and apically upcurved; setae black, loosely grouped anterolaterally; SES very long, linear, broadened basally. Gonocoxae red, strongly narrowed medially; ventral ridge projecting; LAEA deeply convex; GS cupped within G margins, subquadrate base projecting apically; very large recurved rami extending beyond G margins; setae long black, not short apically, dense tufts of long, thickened setae medially, directed basally, very long thin setae continuing laterally; H large, subquadrate in lateral view, distinctly projecting. Epiphallus 1.4 × neck width; with apical margins inturned forming projecting rounded lobes.

**Female.** Unknown.

**Etymology.** This species is named as a noun in apposition after the three-year, multimillion dollar Bush Blitz program that organised and funded the survey on Charles Darwin Reserve, Karara, Lochada and Kadji Kadji Pastoral Leases in Western Australia on which this species was collected. The core focus of the Bush Blitz program is to document the plants and animals in hundreds of properties across Australia's National Reserve System, and on nature discovery – identifying and describing new species of plants and animals. The Bush Blitz program also funded the survey in western New South Wales and Queensland on which *Palirika culgoafloodplainensis* sp. n. was collected (ABRS BB 2009/23887) and funded the description of these three species (ABRS BB TTG209-06).

**Distribution.** (Fig. 11). *Larrpana bushblitz* sp. n. has only been collected from Karara Pastoral Lease, 213 km ESE of Geraldton in Western Australia.

**Comments.** On collection, this species appeared similar to the two male specimens of *Larrpana zwicki* collected only near Windorah (Lambkin et al. 2003) and phylogenetic analysis (Figs 2–3) indicates a close relationship between the two.

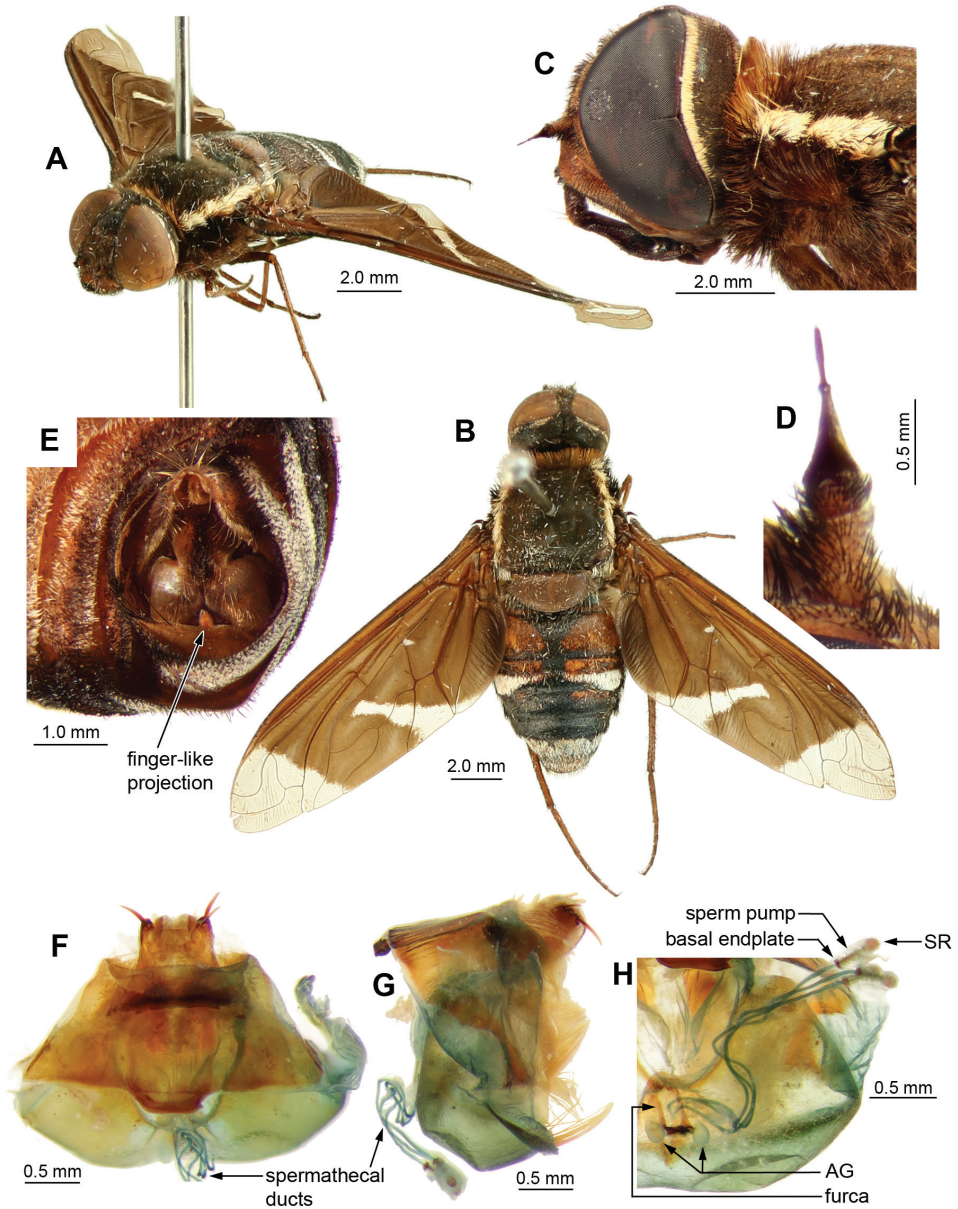
### ***Munjua* Lambkin & Yeates, 2003**

urn:lsid:catalogueoflife.org:taxon:d916e848-29c1-102b-9a4a-00304854f820:col20110201  
<http://species-id.net/wiki/Munjua>

**Type species:** *Munjua erugata* Lambkin & Yeates, 2003: 795.

**Rediagnosis.** Wing with medial hyaline band not linear and narrowing apically, apical infuscated band not meeting posterior wing margin more broadly than medial

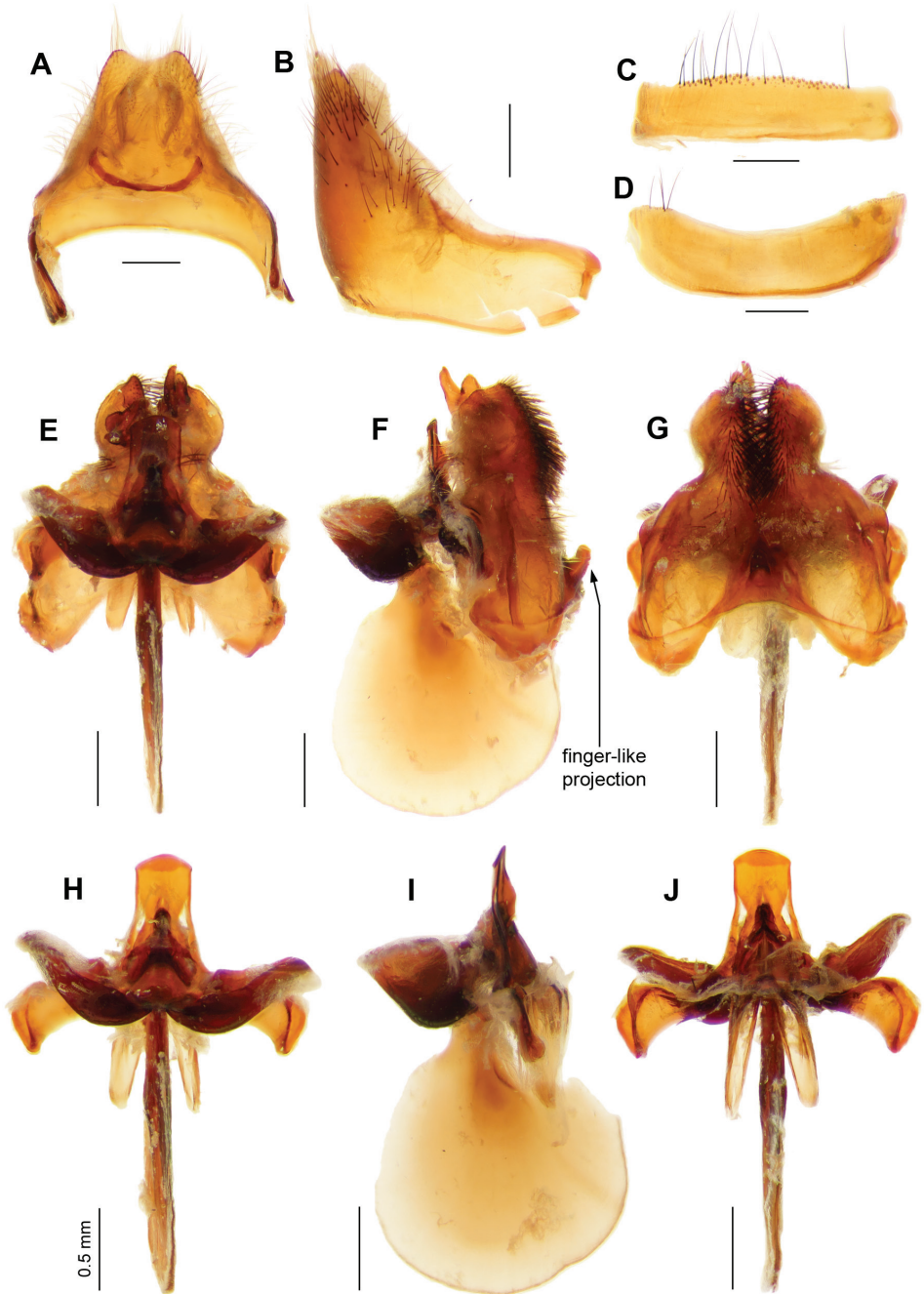




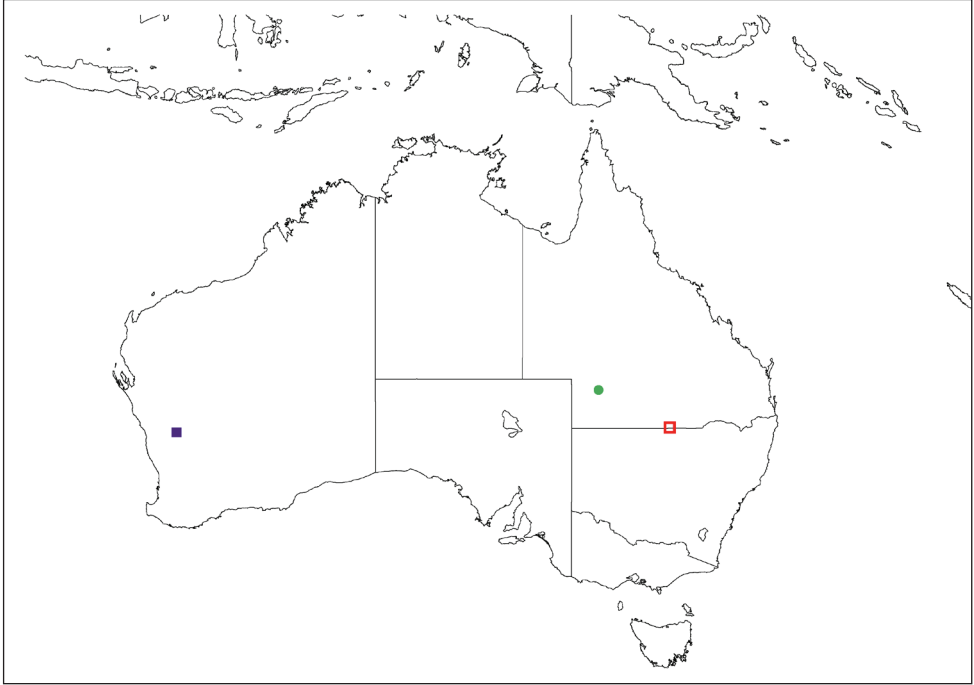
**Figure 9.** *Ngalki trigonum*. **A** Adult, antero-lateral **B** Adult, dorsal **C** Head and thorax lateral **D** Antennae lateral **E** Male genitalic complex showing diagnostic finger-like projection on hypandrium, clearly visible *in situ*. Female genitalia: **F** Dorsal **G** Lateral **H** Dorsal, furca and spermathecal complex.

hyaline band. Gonocoxae deeply narrowed medially, broadly indented basally, with tufts of thickened setae ventromedially, H projecting but not forming a finger-like extension; AE short; EP with medioventral process above AE; very long AAES reach-





**Figure 10.** *Ngalki trigonium*. Male genitalia: **A** Epandrium ventral with sub-epandrial sclerites **B** Epandrium lateral **C** T<sub>8</sub>, dorsal **D** S<sub>8</sub>, ventral **E** Gonocoxal complex dorsal **F** Gonocoxal complex lateral showing diagnostic finger-like projection on hypandrium **G** Gonocoxal complex ventral **H** Adeagal complex dorsal **I** Adeagal complex lateral **J** Adeagal complex ventral. Scale line = 0.5 mm.



**Figure 11.** Map of distribution. Closed circle - *Palirika mackenziei* sp. n. Open square - *Palirika culgoafloodplainensis* sp. n. Closed square - *Larrpana bushblitz* sp. n.

ing G margins; EJA racquet-shaped, very long. Sperm pump short with unpigmented papillae, apical endplate simple with thin processes; thick-walled round SR with distinct basal bulb.

Included species: *Munjua erugata* Lambkin & Yeates, 2003, *Munjua lepidokingi* Lambkin & Yeates, 2003, *Munjua paralutea* Lambkin & Paramonov, 2003.

**Comments.** See reference to the rediagnosis of the genus *Munjua* in the phylogenetic results.

### ***Ngalki* Lambkin, gen. n.**

urn:lsid:zoobank.org:act:77AACA67-1FA6-4CD9-871E-D95C34FDE977

<http://species-id.net/wiki/Ngalki>

**Type species:** *Munjua trigona* Lambkin & Yeates, 2003: 804.

**Diagnosis.** Wing with medial hyaline band linear and narrowing apically, apical infuscated band meeting posterior wing margin twice breadth of medial hyaline band (Fig. 9A, B). Gonocoxae deeply narrowed medially, broadly indented basally, with tufts of thickened setae ventromedially, H projecting forming finger-like extension (Figs 9E, 10F); AE short; EP with medioventral process above AE; very long AAES reaching G margins; EJA racquet-shaped, very long (Fig. 10). Sperm pump short with

unpigmented papillae, apical endplate simple with thin processes; thick-walled round SR with no basal bulb (Fig. 9F–H).

**Etymology.** The name for the genus *Ngalki* is from the aboriginal term *ngalki* for “little finger” from the Ngiyampaa language spoken in much of central New South Wales (Donaldson, 1994), referring to the diagnostic character of the male genitalia for this genus, and is treated as neutral. This follows the tradition set in Lambkin et al. (2003), of using appropriate aboriginal terms for the names of new genera of Australian exoprosopines.

Included species: *Munjua trigona* Lambkin & Yeates, 2003

**Comments.** See reference to the erection of the genus *Ngalki* in the phylogenetic results.

***Ngalki trigonium* (Lambkin & Yeates), comb. n.**

urn:lsid:catalogueoflife.org:taxon:db706730-2dc5-11e0-98c6-2ce70255a436:col20110201  
[http://species-id.net/wiki/Ngalki\\_trigonium](http://species-id.net/wiki/Ngalki_trigonium)

Figs 2–3, 9–10; Morphbank Collection 692333

*Munjua trigona* Lambkin & Yeates, 2003: 804.

**Material examined.** *Paratypes. New South Wales:* 1♂, Round Hill Nature Reserve, 27 Dec 1976, G. Daniels, GDCB Reg # 14199, K 253709; 1♀, Round Hill Nature Reserve, same, GDCB Reg # 17925, K 253717 (AM). **Victoria:** 1♀, Wyperfield Nat Park, 7 Dec 1976, G. Daniels, GDCB Reg # 14163, K 253707; 3♂, Wyperfield Nat Park, 8 Dec 1976, G. Daniels, GDCB Reg # 17924, #14164, # 17923, K 253720, (PS1936) K 253702, K 253712 (AM).

**Other material. New South Wales:** 1♀, Round Hill area, 24–25 Nov 1991, A. Sundholm, [dissected], PS1935, K 289927 (AM). **Western Australia:** 1♂, Fraser Range, 8 Nov 1977, A. Atkins, [dissected], GDCB Reg # 14165, PS1934, K 253698 (AM).

**Rediagnosis.** Large dark flies (wing length 15 - 20 mm), wings as in Figure 9B, dark with narrow, linear, medial hyaline band; long, finger-like apically-directed projection on hypandrium (Figs 9E, 10F). Laterothoracic stripe creamy-white. Broad white scale band on  $T_3$ ,  $T_{4-5}$  with black scales,  $T_{6-7}$  with white scales. Epandrium with long golden setae; SES joined medially. Epiphallus with short medial projection. Female with no BB between pump and pale, square SR.

**Redescription. Male. Head** (Fig. 9C). Face and frons red with reddish-yellow scales, black setae longest below deep frontal depression. Antennal scape 3 × length of pedicel, red; pedicel red; PP 3.5 × length of pedicel, black with reddish pruinescence; BSM dark reddish-brown, 3.5 × length of pedicel, expanded apically; ASM short, blunt (Fig. 9D). Narrow line of creamy-white scales on posterior margin of eye.

**Thorax.** Collar yellow, with tips of Ma darker, reddish. Laterothoracic stripe broad creamy-white, distinct. Scutum black with long hair-like reddish-brown scales, sparse white flattened scales posteromedially. Pleural vestiture dark-red with mauve iridescence; admixed dark-red and black Ma on PE and AN; long scales at base of wing with mauve iridescence. Anepimeral setae admixed dark-red and black. Scales

on APA yellow. Plumula and TR hairs creamy yellow. LT with black Ma, red dorsally. Scutellum red with scales yellowish-red, setae black, sparse long white scale fringe on posterior margin. Legs red with dark reddish-brown scales. Pulvilli chisel-like wedges, less than a half length of mid- and hind-tarsal claws. Halter knob dark reddish-brown, with yellow apical edge. *Wing* (Fig. 9B).  $R_{4+5}$  with abrupt bend basally, cup closed at wing margin, or narrowly open. Widened base of C with dark, reddish-brown scales, paler brown scales posteriorly.  $M_2$  very sinuous, width of  $m_1$  at wing margin  $< 1/2$  width of  $m_2$ . Wing pattern (Fig. 9A, B) black, with broad infuscated band following R proximal to  $i-r_1$ , obliquely through 1st  $r_{2+3}$ ,  $r_5$  and  $m_1$  to meet wing margin in  $m_2$ ; no infuscation in 2nd  $r_{2+3}$ . Hyaline band very narrow, linear, from dc through  $m_2$  basally, apex of cua, cup and anal cells. Squama with reddish-yellow scales.

*Abdomen* (Fig. 9B). Integument with large red areas laterally, leaving black medial band;  $T_2$  with black medial band broad basally, width  $> 1/3$  width of the tergite, tapering sharply apically;  $T_{3-4}$  with black medial band  $< 1/4$  width, black apical band;  $T_{5-7}$  with red areas laterally  $< 1/4$  width.  $T_1$  with Ma white, reddish-brown scales medially.  $T_2$  with dense long cream hairs anterolaterally, dark reddish-brown scales, some white scales laterally. Broad white scale band on  $T_3$ , interrupted medially, dark reddish-brown scales anteromedially, black scales posteromedially.  $T_{4-5}$  with black scales,  $T_{6-7}$  with white scales. Sternites red;  $S_{2-3}$  and  $S_{4-5}$  basally with dense white scales and dense long, fine white hairs;  $S_{4-5}$  apically with dark reddish-brown scales,  $S_{6-7}$  with black scales, black setae. *Genitalia* (Figs 9E, 10). Epandrium red with basal flange short and broad; setae black, long golden setae apically; SES joined medially. Gonocoxae red, strongly narrowed medially; setae black, short apically, medially with thick tufts of basally directed setae, long setae laterally around apex of H; distinct ventral ridge; LAEA deeply convex, extending past G margins; GS cupped within G margins, large subquadrate base with slight projection apically; large recurved R; H crescent-shaped, laterally delimited by swollen and expanded G, laterally subrectangular, with distinct large, blunt finger-like apical projection. Epiphallus long, not expanded apically; with medial projection.

*Female*. Same as male. *Genitalia* (Fig. 9F–H). Dorsal  $T_8$  A short, entire;  $T_{10}$  with 4 pairs of short, thick AC spines; apical endplate with long thin processes; basal endplate with thick processes; long unpigmented papillae, no BB, narrow ring between pump and lightly pigmented, square SR.

**Etymology.** In Lambkin et al. (2003), the name *trigona* given to this species was derived from the Greek *trigonas* “triangular” This was the name the late Sergei Paramonov gave to this species in his unpublished manuscript, and was used to honour his extensive work on Australian bombyliids. With the transfer to *Ngalki*, the specific emendation requires adjustment, and becomes *trigonium* to reflect the neutral gender of the new genus-group name.

**Distribution.** This species has been collected in the southern Australian Bassian region, from semi-arid and arid mallee areas.

**Comments.** The finger-like projection on the H (Figs 9E, 10F) in the males of *Ngalki trigonium* is apparent without dissection and, together with the unusual wing pattern, allows easy identification.

**Keys**

**Key to the Genera of the Australian *Balaana* Group**

- 1        Metallic scales on body, black reflecting blue, bluish-black, green or maroon, no white or yellow scales on T<sub>2-7</sub> or on S<sub>2-7</sub> (Fig. 6D)..... **Palirika Lambkin & Yeates**
- No metallic reflecting black scales; white or yellow scales present T<sub>2-7</sub>, usually distinct bands or lateral triangles on T<sub>3</sub> (Fig. 9B) ..... **2**
- 2 (1)    Wing dimidiate and at least apical half of anal cell margin hyaline, at most short narrow lobe following m-m into m<sub>2</sub>, no medial hyaline band (Fig. 7B) ..... **Larrpana Lambkin & Yeates**
- Wing not dimidiate or anal cell fully infuscated; distinct medial hyaline band usually present (Fig. 9B) ..... **3**
- 3 (2)    Female spermathecal reservoir a long cylinder; T<sub>2</sub> with black scales; T<sub>6-7</sub> with white scales; proboscis extending beyond oral cavity, not longer than head ... **Balaana Lambkin & Yeates**
- Female spermathecal reservoir round to subquadrate never a long cylinder; T<sub>2</sub> with some yellow scales unless T<sub>6</sub> or T<sub>7</sub> with black scales or proboscis longer than head ..... **4**
- 4 (3)    Male with no medioventral process on epiphallus above aedeagus, anterior arms of aedeagal sheath long, reaching gonocoxal margins; quadrate sub-epandrial sclerites in epandrium. EITHER Deeply infuscated wings, only apex hyaline; paler yellowish spots at base of R<sub>2+3</sub>, at base of CuA<sub>1</sub>, join of R<sub>1</sub> and R<sub>5</sub>, r-m and base of m-cu; T<sub>6</sub> black scales; OR medial hyaline band a narrow line; black scales forming median circle apex of T<sub>2</sub> and base of T<sub>3</sub>, yellow scales anteriorly and laterally on T<sub>2</sub>, medially and laterally on T<sub>3</sub> ..... **Muwarna Lambkin & Yeates**
- Male with medioventral process on epiphallus above aedeagus (Figs 5G, 10I), linear or single fused (Fig. 10A) sub-epandrial sclerites in epandrium. Wings less infuscated with broad medial hyaline band broader posteriorly; IF deeply infuscated with medial hyaline band a narrow line (Fig. 9B) no median circle of black scales on T<sub>2-3</sub> ..... **5**
- 5 (4)    Male with anterior arms of aedeagal sheath long, reaching gonocoxal margins (Fig. 10E). Ventral ridge on gonocoxae small or absent, not projecting basally AND hypandrium projecting. Epiphallus without lateral lobes; ejaculatory apodeme extending beyond gonocoxae by more than length of gonostylus (Fig. 10E). EITHER yellow vestiture with wing infuscation distinctly variegated, bright yellow basally and medial band dark brown to black; OR no yellow scales on T<sub>2-7</sub> (Fig. 9B); OR only yellow scales anteromedially on T<sub>2-3</sub>, S<sub>2-3</sub> with dense, white scales and setae, S<sub>5-7</sub> with dense, black scales and setae ..... **6**
- Male with anterior arms of aedeagal sheath short, not reaching gonocoxal margins; if ventral ridge on gonocoxae very small or absent then hypandrium

- not projecting. Abdominal yellow scales at least anteriorly  $T_2$ ,  $S_{2-3}$  with dense, white scales; hemispherical tufts of macrochaetae laterally on  $T_1$  white or yellow, not dark reddish-brown or black; wing infuscation not distinctly variegated, IF yellow scales only anteromedially  $T_2$  then scales on  $S_{5-7}$  not black, at most reddish-brown.....7
- 6 (5) Medial hyaline band linear, narrowing anteriorly, with apex of anal cell and cup hyaline (Fig. 9B); male gonocoxae with long, finger-like projection from hypandrium (Figs 9E, 10F)..... ***Ngalki* Lambkin, gen. n.**
- Medial hyaline band not linear, not narrowing anteriorly; male gonocoxae with no finger-like projection from hypandrium ..... ***Munjua* Lambkin & Yeates**
- 7 (5) Male epandrium with strongly grouped setae on anterolateral flange; ventral ridge on gonocoxae large, distinctly projecting basally, hypandrium not projecting, epiphallus with rounded projecting lateral lobes, ejaculatory apodeme short, extending beyond gonocoxae by less than length of gonostylus, hind-tibial scales not protruding, dark flies,  $T_2$  and  $T_4$  mostly black scales ...  
..... ***Kapu* (Lambkin & Yeates)**
- Male epandrium with loose setae, without an anterolateral flange; hind-tibial scales protruding, pale yellowish flies with striped abdominal vestiture,  $T_2$  and  $T_4$  mostly yellow scales ..... ***Wurda* Lambkin & Yeates**

### Key to Species of *Palirika*

- 1 No pre-apical infuscated band on wing (Figs 4C, 6A).....2
- Pre-apical infuscated band on wing present.....3
- 2 (1) Infuscation of wing blade almost complete except for hyaline apical area and isolated spot over dc (Fig. 6A).....***Palirika mackenziei* Lambkin, sp. n.**
- Infuscation of wing blade only extending over half wing area, indistinct extension along  $R_{4+5}$  and isolated mottled area along m-m (Fig. 4C) .....  
..... ***Palirika culgoafloodplainensis* Lambkin, sp. n.**
- 3 (1) Anal and posterior cells with notched hyaline area, infuscation extending along  $CuA_2$ ; apically-directed spur-vein on  $i-r_1$  cross vein.....  
..... ***Palirika bouchardi***
- Anal and posterior cells without extension along  $CuA_2$ , rarely spur-vein on  $i-r_1$  cross vein .....4
- 4 (3) Hyaline medial band continues anteriorly through entire  $r_5$ ; dark thorax; abdomen: males dark prussian-blue, almost black; females bluish-green .....  
..... ***Palirika cyanea***
- Hyaline band usually through dc anteriorly, not entirely through  $r_5$ , or absent; thorax and abdomen not as above.....5
- 5 (4) Collar white with contrasting tuft of black lateral Ma at base of pronotal lobe, bright green thorax, anterolaterally dark maroon; bright, dark blue abdomen; anal and cup fully infuscated..... ***Palirika decora***



- Collar entirely white or yellow, at most 4 reddish Ma above postpronotal lobe; thorax, abdomen, anal and cup not as above ..... **6**
- 6 (5) Face yellow, most facial setae shiny gold; blue-green thorax and abdomen ....  
..... *Palirika viridula*
- Face orange-red to reddish-brown; if yellow, most facial setae black; thorax and abdomen not as above..... **7**
- 7 (6) Thorax green..... **8**
- Thorax dark, not green..... **11**
- 8 (7) Thorax anterolaterally with dark maroon scales; anal and cup infuscation various ..... **9**
- Thorax entirely green; anal and cup hyaline apically..... **10**
- 9 (8) Abdomen bluish-green; brown wing infuscation, anal and cup hyaline apically; blue face scales ..... *Palirika whyalla*
- Abdomen entirely purple; black wing infuscation, anal and cup fully infuscated; purple face scales..... *Palirika anxios*
- 10 (8) Thorax bright yellowish-green; abdomen blue to bluish-green metallic scales; infuscated wing band short, much narrower than hyaline band.....  
..... *Palirika marginicollis*
- Thorax dark bluish-green; abdomen T<sub>2</sub> blue-green, T<sub>3-7</sub> blue, T<sub>4-6</sub> admixed maroon at least laterally; infuscated wing band broader than hyaline band ...  
..... *Palirika blackdownensis*
- 11 (7) Abdomen purple with blue scales on T<sub>4-6</sub>, Queensland ..... *Palirika danielsi*
- Abdomen entirely purple, no blue scales on T<sub>4-6</sub>, Western Australia.....  
..... *Palirika basilikos*

**Key to Species of *Larrpana***

- 1 No yellow scales on T<sub>2-7</sub> (Fig. 7A, B), Ma on T<sub>1</sub> black, white or yellow..... **2**
- Abdominal yellow scales at least anteriorly T<sub>2</sub>; Ma on T<sub>1</sub> white, not black ....  
..... *Larrpana collessi*
- 2 (1) Wing without small paler yellowish spots in infuscation, m-m without infuscation..... *Larrpana dimidiatipennis*
- Wing with small paler yellowish spots in infuscation; m-m with infuscation (Fig. 7A, B)..... **3**
- 3 (2) Wing without short narrow lobe following m-m into m<sub>2</sub> (Fig. 7A, B).....  
..... *Larrpana bushblitz* Lambkin, sp. n.
- Wing with short narrow lobe following m-m in m<sub>1</sub> into m<sub>2</sub>.....  
..... *Larrpana zwicki*

## Acknowledgments

Firstly, we thank the Bush Blitz program partners and the program managers from the Australian Biological Resources Study (ABRS), a section within the Parks Division of the Department of Sustainability, Environment, Water, Population and Communities (especially Brooke Glasser, Annabel Wheeler, and Kate Gillespie) for organising and funding the Bush Blitz field work on Charles Darwin Reserve, Karrara, Lochada and Kadji Kadji Pastoral Leases in WA, funding the Bush Blitz survey of Culgoa Floodplains NP Qld, Culgoa NP and Ledknapper NR NSW (ABRS BB 2009/23887), and funding this descriptive work (ABRS BB TTG209-06). We thank the Council of Heads of Australian Faunal Collections (CHAFC) for funding the employment of Rhys Smith, Kathy Ebert, Kathleen Nugent, Wendy Hebron, and Karin Koch at QM for sorting, databasing and curating of collected specimens from the Bush Blitz survey of Culgoa Floodplains NP, Culgoa NP and Ledknapper NR. We thank the QM and especially John Hooper (Head Biodiversity & Geosciences Programs) for supporting our participation in the Bush Blitz program. CLL thanks Geoff Monteith and Noel Starick (QM, Brisbane), Catherine Young (TMAG, Hobart), Celia Symonds (UNSW, Sydney), Remko Leijds (SAM, Adelaide), Ray Mjadwesch (Mjadwesch Environmental Service, Bathurst) for their company and help in the field. We thank the numerous QM volunteers who have willingly worked on sorting the massive amount of material collected from the Bush Blitz program: Rhys Smith, Noel Starick, Jackie Chan, and John Purdie. CLL and Noel Starick thank all the National Park staff who have always encouraged our work, often accompanied us in the field, taken numerous samples under difficult circumstances ranging from intense dust storms to record breaking floods, and provided accommodation, great company and good advice: Andy Coward, Megan Simpson, Cheryn Kelly, and Stephen Peck (Culgoa Floodplains NP Qld); Rick Ohlsen and Bart Schiebaan (Culgoa NP NSW); and Shayne OSullivan (Ledknapper NR, NSW).

CLL and Noel Starick thank the Mackenzie family of Plevna Downs Station for the enthusiasm and interest they always show in all forms of natural history, the welcome and hospitality they have given to us and all staff from the Queensland Museum, and the encouragement they provide to the local Natural History Society, regional property owners and community members on development of a knowledge base of biodiversity of arid areas. For providing collection permits to collect and take samples from National Reserves, we thank Jacqui Brock (Scientific Permit W1TK05498008: Queensland Parks and Wildlife Service, DERM, QLD) and Brendon Neilly (Scientific Research Licence S10016: NPWS, OEH, NSW). We thank David Britton and Jacqui Recsei (AM, Sydney) for supplying specimens of *Ngalki trigonium* for dissection and photography.

We thank Neal Evenhuis and an anonymous reviewer for their positive comments on the manuscript. Lastly, but not least, we gratefully acknowledge the work of Geoff Thompson (QM) for photographing specimens and guidance in the use of the imaging systems, Paul Avern (QM) for help with writing the occurrence data in Darwin Core format, Federica Turco (QM) for production of the distribution map and help with the

GBIF and Dryad uploads, Vladimir Blagoderov, (Natural History Museum, London) for help with Scratchpads, Debbie Paul (School of Computational Science, Florida State University Tallahassee) for assistance with Morphbank, and Lyubo Penev and Teodor Georgiev (Pensoft Publishers, Sofia, Bulgaria) for their support and assistance with data publication through GBIF and Dryad.

## References

- ABRS (2009) Australian Faunal Directory. In 'Australian Faunal Directory', Australian Biological Resources Study, Canberra.
- Adobe Systems (2010a) Adobe Illustrator C S5 version 15.0.2.
- Adobe Systems (2010b) Adobe Photoshop C S5 version 13.0.3 × 32.
- Bezzi M (1908) Eine neue Aphoebantus-Art aus den palaearktischen Faunengebiete (Dipt.). Zeitschrift für Systematische Hymenopterologie und Dipterologie. Mecklenberg 8.
- Blagoderov V, Brake I, Georgiev T, Penev L, Roberts D, Rycroft S, Scott B, Agosti D, Catapano T, Smith VS (2010a) Streamlining taxonomic publication: a working example with Scratchpads and ZooKeys. ZooKeys 50: 17–28. doi: 10.3897/zookeys.50.539
- Blagoderov V, Hippa H, Nel A (2010b) *Parisognoriste*, a new genus of Lygistorrhinidae (Diptera: Sciaroidea) from the Oise amber with redescription of *Palaeognoriste* Meunier. ZooKeys 50: 79–90. doi: 10.3897/zookeys.50.506
- Bowden J (1971) A Note on the name *Exoprosopa dimidiata* Roberts (Diptera: Bombyliidae). Journal of the Australian Entomological Society 10: 64. doi: 10.1111/j.1440-6055.1971.tb00012.x
- Brake I, von Tschirnhaus M (2010) *Stomosis arachnophila* sp. n., a new kleptoparasitic species of freeloader flies (Diptera, Milichiidae). ZooKeys 50: 91–96. doi: 10.3897/zookeys.50.505
- Bremer K (1992) Ancestral areas: a cladistic reinterpretation of the center of origin concept. Systematic Biology 41: 436–445.
- Bremer K (1994) Branch support and tree stability. Cladistics 10: 295–304. doi: 10.1111/j.1096-0031.1994.tb00179.x
- Chapman AD (2009) Numbers of living species in Australia and the World. Australian Biological Resources Study, Canberra, 61 pp.
- Donaldson T (1994) Ngiyampaa. In: Thieberger N, McGregor W (Eds) Macquarie Aboriginal words : a dictionary of words from Australian Aboriginal and Torres Strait Islander languages, Macquarie Library, Macquarie University, North Ryde, NSW, 23–40.
- ESRI (1998) ArcView GIS version 3.1. Environmental Systems Research Institute, Inc., Redlands, California.
- Evenhuis NL (1981) Studies in Pacific Bombyliidae (Diptera) VI. Description of a new anthracine genus from the Western Pacific, with notes on some of Matsumura's *Anthrax* types. Pacific Insects 23: 189–200.
- Evenhuis NL (1991) Studies in Pacific Bombyliidae (Diptera). 10. Bombyliidae of New Caledonia. In: Chazeau J, Tillier S (Eds) Zoologia Neocaledonica Volume 2, Mémoires du Muséum national d'Histoire naturelle. Zoologie, Tome 149, Paris, 279–288.

- Evenhuis NL, Greathead DJ (1999) World Catalog of Bee Flies (Diptera: Bombyliidae). Backhuys, Leiden, Netherlands.
- Farris JS (1990) Phenetics in camouflage. *Cladistics* 6: 91–100. doi: 10.1111/j.1096-0031.1990.tb00528.x
- Gray G (1883) Notices of new genera and species. In: Cuvier B (Ed) *The Animal Kingdom arranged in conformity with its organization*. Whittaker, Treacher, and Co., London, 780 pp.
- ICZN (2008) Proposed amendment of the International Code of Zoological Nomenclature to expand and refine methods of publication. *Zootaxa* 1908: 57–67.
- Källersjö M, Farris JS, Kluge AG, Bult C (1992) Skewness and permutation. *Cladistics* 8: 275–287. doi: 10.1111/j.1096-0031.1992.tb00071.x
- Kozub D (2011) Helicon Focus version 5.2 Pro (Helicon Soft Ltd.: Kharkov, Ukraine.)
- Lambkin CL, Yeates DK, Greathead DJ (2003) An evolutionary radiation of bee flies in semi-arid Australia: Systematics of the Exoprosopini (Diptera: Bombyliidae). *Invertebrate Systematics* 17: 735–891. doi: 10.1071/IS03020
- Lioy P (1864) I ditteri distribuiti secundo un nuovo metodo di classificazione naturale [part]. *Atti dell' I.R. Istituto Veneto di Scienze Lettere ed Arti* (3) 9: 719–71.
- Littlefield R (2011) Zerene Stacker LLC, version 1.02. (Zerene Systems: Richland, Washington.)
- Macquart J (1840) *Diptères exotiques nouveaux ou peu connus*. Roret, Paris. 21plates, 5–135 pp.
- Macquart J (1846) *Diptères exotiques nouveaux ou peu connus*. Supplément. *Mémoires de la Société Royale des Sciences, de l'Agriculture et des Arts, de Lille* 1844: 133–364.
- Maddison DR, Maddison WP (2003) *MacClade 4. Analysis of Phylogeny and Character Evolution*. Version 4.06 for OS X. (Sinauer Associates, Inc.: Sunderland, Massachusetts.)
- Maddison WP, Maddison DR (2010) *Mesquite: A modular system for evolutionary analysis*. Vers. 2.74. (<http://mesquiteproject.org>.)
- Margush T, McMorris F (1981) Consensus n-trees. *Bulletin of Mathematical Biology* 43: 239–244.
- McAlpine J (1981) Morphology and terminology: Adults. In: McAlpine JF, Peterson BV, Shewell GE, Teskey HJ, Vockeroth JR, Wood DM (Eds) *Manual of Nearctic Diptera*. Research Branch Agriculture Monograph No. 27. Canadian Government Publishing Centre: Ottawa, 9–63.
- Mickevich MF, Mitter C (1981) Treating polymorphic characters in systematics: A phylogenetic treatment of electrophoretic data. In: Funk V, Brooks D (Eds) *Advances in cladistics*. Proceedings of the first meeting of the Willi Hennig Society. New York Botanical Garden, Bronx, 45–58.
- Mickevich MF, Weller SJ (1990) Evolutionary character analysis: tracing character change on a cladogram. *Cladistics* 6: 137–170. doi: 10.1111/j.1096-0031.1990.tb00533.x
- Newman E (1841) Entomological notes [part]. *Entomologist* 1: 220–223.
- NHAS (2009) Australian Natural Heritage Assessment Tool. In: Australian Natural Heritage Assessment Tool. Natural Heritage Assessment Section, Department of Sustainability, Environment, Water, Population and Communities, Australia.

- Nixon KC (2002) WinClada version 1.00.08. L.H. Bailey Hortorium, Cornell University, Ithaca, New York. [[http://www.cladistics.com/about\\_winc.htm](http://www.cladistics.com/about_winc.htm)]
- Osten Sacken CR (1877) Art. XIII. Western Diptera: Descriptions of new genera and species of Diptera from the region west of the Mississippi and especially from California. Bulletin United States Geological Survey: 189–354.
- Penev L, Agosti D, Georgiev T, Catapano T, Miller J, Blagoderov V, Roberts D, Smith VS, Brake I, Ryscrot S, Scott B, Johnson NF, Morris RA, Sautter G, Chavan V, Robertson T, Remsen D, Stoev P, Parr C, Knapp S, Kress J, Erwin T (2010) Semantic tagging of and semantic enhancements to systematics papers: ZooKeys working examples. *ZooKeys* 50: 1–16. doi: 10.3897/zookeys.50.538
- Polaszek A, Agosti D, Alonso-Zarazaga M, Beccaloni G, de Place Bjørn P, Bouchet P, Brothers DJ, Cranbrook Eo, Evenhuis NL, Godfray HCJ, Johnson NF, Krell FT, Lipscomb D, Lyal CHC, Mace GM, Mawatari SF, Miller SE, Minelli A, Morris S, Ng PKL, Patterson DJ, Pyle RL, Robinson N, Rogo L, Taverne J, Thompson FC, van Tol J, Q.D. W, Wilson EO (2005a) Commentary: A universal register for animal names. *Nature* 437: 477.
- Polaszek A, Alonso-Zarazaga M, Bouchet P, Brothers DJ, Evenhuis NL, Krell FT, Lyal CHC, Minelli A, Pyle RL, Robinson N, Thompson FC, van Tol J (2005b) ZooBank: the open-access register for zoological taxonomy: technical discussion paper. *Bulletin of Zoological Nomenclature* 62: 210–220.
- Scopoli IA (1763) *Entomologia Carniolica exhibens Insecta Carnioliae Indigena et Distributa in Ordines, Genera, Species, Varietates. Methodo Linneana.*
- Sorenson MD (1999) TreeRot, version 2. (Boston University: Boston, MA.)
- Swofford DL, Begle DP (1993) PAUP: Phylogenetic Analysis Using Parsimony Version 3.1.1 User's Manual. Illinois Natural History Survey, Champaign.
- Swofford DL (2002) PAUP\*: Phylogenetic Analysis Using Parsimony (\*and Other Methods). Version 4.0b.10. Sinauer Associates, Sunderland, Massachusetts.
- Winterton SL (2009) Revision of the stiletto fly genus *Neodialineura* Mann (Diptera: Therevidae): an empirical example of cybertaxonomy. *Zootaxa* 2157: 1–33.
- Winterton SL, Gaimari SD (2011) Revision of the South American window fly genus *Heteromphrale* Kröber, 1937 (Diptera, Scenopinidae). *ZooKeys* 84: 39–57. doi: 10.3897/zookeys.84.774
- Yeates DK (1994) Cladistics and classification of the Bombyliidae (Diptera: Asiloidea). *Bulletin of the American Museum of Natural History* 219: 1–191.
- Yeates DK, Lambkin CL (1998) Cryptic species diversity and character congruence: Review of the tribe Anthracini (Diptera: Bombyliidae) in Australia. *Invertebrate Taxonomy* 12: 977–1078. doi: 10.1071/IT97019
- Yeates DK, Logan D, Lambkin CL (1999) Life history of *Ligyra satyrus* (Diptera: Bombyliidae). *Journal of the Australian Entomological Society*. 38: 300–304. doi: 10.1046/j.1440-6055.1999.00127.x
- Yeates DK, Lambkin CL (2006) Family Bombyliidae. On The Fly: The Interactive Atlas and Key to Australia Fly Families. Australian Biological Resources Study, Canberra & Centre for Biological Information Technology, St. Lucia, Brisbane.



## Appendix I

### Morphological Characters

For a full description of these characters see Appendix 2 in Lambkin et al. (2003).

Morphological terminology follows that of McAlpine (1981), Yeates (1994), and Lambkin et al. (2003).

### Head

#### Frontal

1. Head scales: (0) absent; (1) present
2. Face scale density: (0) absent; (1) sparse; (2) overlapping; (3) carpet
3. Frons scale density: (0) absent; (1) sparse; (2) overlapping; (3) carpet; (4) distinct dense medial patch
4. Frons with vertical groove: (0) absent; (1) depression; (2) groove
5. Frons with horizontal depression: (0) absent; (1) shallow; (2) distinct; (3) deep

#### Dorsal

6. W head/W thorax: (0) <; (1) =; (2) >
7. L antennae to compound eye/L scape: (0) <; (1) ≥; (2) ≥ 2×; (3) ≥ 4×
8. L antennal separation/L scape: (0) <; (1) ≥; (2) ≥ 2×; (3) ≥ 3×
9. Male compound eye separation /W OT: (0) meet; (1) <; (2) =; (3) ≤ 2×; (4) ≤ 3×; (5) > 3×
10. Female compound eye separation /W OT: (0) ≤ 2×; (1) ≤ 3×; (2) > 3×
11. OT to posterior margin of compound eye/ L OT: (0) ≤ OT; (1) > OT; (2) ≥ 2×; (3) ≥ 3×
12. L occiput/L OT: (0) ≤ 2×; (1) < 3×; (2) occiput long, well developed ≥ 3×
13. L vertex; i.e. L OT to occipital groove/ L OT: (0) ≤ L OT; (1) ≤ 2×; (2) wide > 2×
14. Depth occipital foveal depression: (0) no vertex; (1) not depressed; (2) shallow; (3) deep, slopes posteriorly at 45° to a short OG
15. W occipital foveal depression: (0) no vertex; (1) not depressed; (2) narrower than compound eye separation; (3) wider than compound eye separation
16. Apical occipital groove: (0) narrow; (1) wide rounded

<b>Morphological Abbreviations</b>			
A	apodeme (Fig. 6F)	Ma	macrochaetae
AAES	anterior arms of aedeagal sheath (Fig. 5E)	MB	membranous base
AC	acanthophorite (Fig. 6F)	mcu	section of wing vein CuA1 between vein
AE	aedeagus (Fig. 5F–H)		M3 and crossvein m-cu
AG	accessory glands (Fig. 9H)	m-m	basal section of wing vein M2
AN	anepisternum (mesopleuron)	MT	mediotergite (metanotum)
APA	anterior postalar ridge	OG	occipital groove
ASM	antennal apical stylomere	OT	ocellar triangle
BSM	basal stylomere	PA	postalar
BB	spermathecal basal bulb	PE	proepimeron (prosternum)
BP	basiphallus (Fig. 5E, F)	PL	plumula
BSM	antennal basal stylomere	PN	postpronotal lobe (humeral callus)
C	costa	PP	postpedicel
Cu	cubital vein	PR	prealar
dc	discal cell	R	radial vein
E	epandrium	1st r2+3	wing cell r2+3 basal to crossvein i-r1
EJA	ejaculatory apodeme (Fig. 5E, F)	2nd r2+3	wing cell r2+3 apical to crossvein i-r1
EP	epiphallus (Fig. 5E, F)	RM	ramus (Fig. 5F, H)
F	flagellomere	S	sternite (Fig. 6F, G)
G	gonocoxa	SES	subepandrial sclerites (Fig. 4E)
GS	gonostylus (Fig. 5B)	Sc	subcostal vein
H	hypandrium (Fig. 5C, D)	Scm	scutum
i-r1	wing inter-radial crossvein between veins R2+3 and R4;	Scu	scutellum
		SP	sperm pump (Fig. 9H)
i-r2	wing inter-radial crossvein between veins R4 and R5.	SR	spermathecal reservoir (Fig. 9H)
		ST	spermathecal
K	katapisternum (sternopleuron)	SS	scutoscutellar suture
L	length	T	tergite (Fig. 6F, G)
LAEA	lateral aedeagal apodemes (Fig. 5E, F)	TR	tympanal ridge
LT	laterotergite (metapleuron)	W	width
M	medial vein	WR	wing root

**Lateral**

17. Shape of head laterally: (0) round; (1) protruding but rounded, blunt; (2) conical
18. L proboscis: (0) < L oral cavity; (1) > L oral cavity; (2) > L head; (3) > 1.5× L head; (4) > 2× L head
19. L palps/ L proboscis: (0) rudimentary; (1) < 0.25×, short; (2) < 1, long
20. Genae setae surrounding oral cavity: (0) not grouped; (1) grouped laterally; (2) grouped apically, small tuft
21. L setae below antennae/L scape: (0) >; (1) ≤; (2) ≤ 0.5

22. Horizontal depression between antennae: (0) absent or shallow; (1) distinct; (2) deep
23. W of face projection/W compound eye including indentation posterior margin of eye: (0)  $< 1/4$ ; (1)  $\leq 1/2$ ; (2)  $\leq 1$
24. W of the indentation on the posterior margin of the compound eye/L OT: (0)  $\leq$  L OT; (1)  $>$  L OT; (2)  $\geq 2 \times$  L OT
25. L of the line from the posterior margin of compound eye bisecting the compound eye facets/L OT: (0) absent; (1)  $<$ ; (2)  $\geq$ ; (3)  $\geq 2 \times$

### Antennae

26. L scape /L pedicel: (0)  $\leq$ ; (1)  $\leq 3 \times$ ; (2)  $> 3 \times$
27. L PP/ L pedicel: (0)  $\leq 3 \times$ ; (1)  $\leq 4 \times$ ; (2)  $> 4 \times$
28. PP base shape: (0) broad not round base; (1) onion-like, round base abruptly narrowed; (2) medially divided, laterally; (3) conical, broad base, gradually narrowed
29. L PP rod/L base: (0) long  $> 2 \times$ ; (1) short  $< 2 \times$ ; (2) no thin rod
30. Distinct joint between PP and BSM: (0) absent; (1) present
31. L BSM/L pedicel: (0) absent; (1)  $\leq$ ; (2)  $\leq 2 \times$ ; (3)  $\leq 3 \times$ ; (4)  $> 3 \times$
32. BSM apical hairs: (0) absent; (1) present
33. L ASM/W BSM: (0)  $<$  W BSM, minute spine; (1)  $>$  W BSM; (2)  $> 2 \times$ ; (3) conical twisted hat

### Thorax

34. Collar Ma: (0) pointed; (1) midstyle; (2) pectinate
35. Scm reflective vestiture: (0) bright; (1) very dull dark; (2) not reflective
36. Ma AN: (0) pointed; (1) midstyle; (2) pectinate
37. L PR bristles/ L PN: (0)  $> 2 \times$ ; (1)  $>$ ; (2)  $<$ ; (3) absent
38. LT vestiture: (0) bare; (1) some hair; (2) dense hair
39. Ma LT: (0) absent; (1) pointed; (2) midstyle; (3) pectinate
40. MT vestiture: (0) bare; (1) some hair; (2) dense hair
41. L PA bristles/Scu: (0) absent; (1)  $< 0.5$ ; (2)  $\leq$ ; (3)  $>$
42. L thorax/Scu: (0)  $\leq 2 \times$ ; (1)  $\leq 3 \times$ ; (2)  $> 3 \times$
43. Scu vestiture reflective: (0) bright; (1) very dull dark; (2) absent

### Legs

44. C<sub>1</sub> very long setae: (0) absent; (1) some; (2) dense
45. L forefemur/ L coxa: (0)  $\leq 1.5 \times$ ; (1)  $\leq 2 \times$ ; (2)  $\leq 2.5 \times$ ; (3)  $> 2.5 \times$

46. Forefemoral spines: (0) absent; (1) short < W femur; (2) long  
 47. Forefemoral long hairs: (0) absent; (1) some; (2) dense  
 48. Foretibial spicules: (0) absent; (1) some; (2) dense  
 49. L foretarsus/ L foretibia: (0)  $\geq 1$ ; (1)  $\geq 0.75$ ; (2)  $> 0.5$   
 50. Foretarsal microchaetae: (0) absent; (1) very few < 10; (2) present  
 51. Foretarsal microchaetae: (0) absent; (1) ends bulbous; (2) ends slightly bent; (3) ends distinctly bent  
 52. L foreclaw/ L midclaw: (0) < claw; (1)  $\leq$  half; (2)  $\leq$  third  
 53. Midfemoral spines: (0) absent; (1) short < W femur; (2) some long  
 54. Midfemoral long hairs: (0) absent; (1) some; (2) dense  
 55. Midtibial spicules: (0) absent; (1) some; (2) dense  
 56. L midpulvilli/ L claw: (0)  $\geq$ ; (1) <; (2)  $\leq$  half; (3)  $< 0.2$   
 57. Midpulvilli: (0) large, flattened, membranous; (1) small rounded setose; (2) chisel-conical  
 58. Hindfemoral spines: (0) absent; (1) short < 0.5 W femur; (2) some long  
 59. Hindfemur long hairs: (0) absent; (1) some; (2) dense  
 60. Long hindtibial scales: (0) no long scales; (1) some long scales; (2) fluffy - protruding; (3) feathery; (4) very long, dense, feathered fringes  
 61. Hindtibial spicules: (0) absent; (1) some spicules; (2) apical patch; (3) dense spicules  
 62. Hindtibial spicules L: (0) absent; (1) same; (2) inner row longer  
 63. L hindpulvilli/L claw: (0)  $\geq$ ; (1) <; (2)  $\leq$  half; (3)  $\leq 0.2$   
 64. Hindpulvilli: (0) large, flattened, membranous; (1) small rounded setose; (2) chisel -conical

## Wing

65. Patagium: (0) absent hairs only; (1) present scales  
 66. Basicosta: (0) absent; (1) blunt; (2) sharp

## Wing venation

67. Crossvein forming an extra anterior apical submarginal cell: (0) absent; (1) extra apical submarginal cell  
 68.  $R_{2+3}$  join  $R_{4+5}$ : (0) basal to r-m > L r-m; (1) at r-m  
 69.  $R_{2+3}$  rises from  $R_{4+5}$ : (0) acutely; (1) at right angles  
 70. 2nd r-m crossvein: (0) absent; (1) present  
 71. Spurvein base  $R_{2+3}$ : (0) absent; (1) bump or present  
 72.  $R_{2+3}$  apical loop: (0) long apical loop; (1) loop > 180°; (2) at least 90° bend; (3) absent  
 73. i-r<sub>1</sub>,  $R_{2+3}$  to  $R_4$ : (0) absent; (1) present

74. i-r<sub>1</sub> crossvein: (0) absent; (1) straight; (2) slightly sinuous; (3) distinctly sinuous
75. Spurvein i-r: (0) absent; (1) bump or present
76. L i-r<sub>1</sub>/L r-m: (0) absent; (1) ≤; (2) ≤ 2×; (3) < 3×; (4) ≥ 3×
77. Spur-vein base R<sub>4+5</sub>: (0) absent; (1) bump or present
78. Spur-vein R<sub>4</sub>: (0) absent; (1) bump or present
79. R<sub>5</sub>/R<sub>1</sub> meet wing: (0) R<sub>5</sub> distal to R<sub>1</sub>; (1) equal; (2) R<sub>5</sub> basal to R<sub>1</sub>
80. i-r<sub>2</sub>, R<sub>4</sub> to R<sub>5</sub>: (0) absent; (1) present
81. M<sub>1</sub>: (0) straight; (1) slightly sinuous; (2) sinuous
82. L m-m/r-m: (0) ≤ 2×; (1) ≤ 3×; (2) > 3×
83. m-m: (0) straight; (1) slightly sinuous; (2) sinuous
84. m-m spurvein: (0) absent; (1) into m<sub>2</sub>; (2) into discal; (3) crossvein form basal cell
85. m-m to hind wing margin: (0) oblique; (1) parallel; (2) horizontal
86. M<sub>2</sub>: (0) straight; (1) slightly sinuous; (2) sinuous
87. r<sub>5</sub> open: (0) open; (1) narrow < r-m; (2) just closed; (3) closed and stalked - acute; (4) closed and stalked - obtuse
88. m<sub>1</sub> open: (0) open; (1) closed and stalked
89. m<sub>2</sub> open: (0) open; (1) closed and stalked - acute
90. L m-cu/r-m: (0) > 3×; (1) < 3×; (2) ≤ 2×; (3) ≤
91. m-cu: (0) straight; (1) slightly sinuous; (2) 90° basally; (3) sinuous
92. Spur-vein m-cu: (0) absent; (1) spur into discal cell
93. Spur-vein into M<sub>2</sub>: (0) absent; (1) spur-vein into m<sub>2</sub>; (2) cross-vein to CuA<sub>1</sub>
94. W anal/ W posterior cubital: (0) ≤; (1) ≤ 1.5×; (2) ≤ 2×; (3) > 2×
95. cup open: (0) open; (1) narrow < r-m; (2) closed at wing margin (Fig. 9B); (3) closed and stalked - acute
96. Anal lobe margin: (0) hairs; (1) some scales; (2) scales dense
97. Anal cell: (0) broad rounded; (1) rounded; (2) thin linear; (3) very reduced
98. Alula reduced: (0) not reduced; (1) reduced, L < 4× W
99. Alula margin: (0) hairs; (1) some scales; (2) scales dense
100. Squamal margin: (0) hairs; (1) some scales; (2) scales dense
101. Squama reduced: (0) not reduced; (1) reduced, L < 4× W
102. wing L: (0) ≤ 10; (1) 10-15; (2) 16-20; (3) 21-25; (4) > 25
103. wing L/W: (0) ≤ 3×; (1) long > 3×
104. L wing/ L abdomen: (0) ≥ 3×; (1) ≥ 2 ×; (2) > 1.5 ×; (3) >

## Abdomen

105. Abdomen apically: (0) rounded; (1) narrowed; (2) truncate, parallel sided
106. Abdomen L/ W T<sub>2</sub>: (0) > 2.5×; (1) < 2.5×; (2) < 2×; (3) ≤ 1.5×; (4) ≤
107. Abdominal vestiture reflective: (0) bright; (1) very dull dark; (2) not reflective



108. Abdominal bristles/hair: (0) dorsally and laterally; (1) lateral and apically  $T_7$ ; (2) apically; (3) absent
109. Long lateral hairs  $> T_1$ : (0) dense tufts; (1) some; (2) absent
110.  $Ma T_1$ : (0) pointed; (1) midstyle; (2) pectinate
111. Scales: (0) absent; (1) adpressed scales; (2) upstanding scales; (3) long upstanding scale tufts

### Male genitalia

112. Male genitalia twisted: (0) no twisting, gonocoxae ventral; (1) 90°; (2) 180°, gonocoxae dorsal
113. E setae grouping: (0) not grouped; (1) medioapically; (2) lateroapically; (3) laterally
114. E setae group: (0) not grouped; (1) loose; (2) strong; (3) dense tufts
115. Epandrial spines: (0) absent; (1) short and broad; (2) long
116. E apically: (0) deeply indented; (1) concave-indented; (2) truncate; (3) convex rounded; (4) convex pointed
117. E apical flange: (0) absent; (1)  $<$  quarter base; (2)  $<$  third base; (3)  $<$  half base; (4)  $>$  half rest base
118. E medial flange: (0) absent; (1) slight; (2) distinct  $<$  quarter base
119. L E basal flange: (0) absent; (1)  $<$  quarter base; (2)  $<$  third base (Fig. 10B); (3)  $<$  half base; (4)  $\geq$  half rest base; (5)  $>$  base
120. Mid W/L basal flange: (0) absent; (1)  $<$  quarter length base; (2)  $<$  half length; (3)  $>$  half length (4)  $>$  length
121. E posterolateral flange: (0) absent; (1)  $<$  quarter length base
122. E basal flange recurved: (0) absent (Fig. 10B); (1)  $<$  quarter base; (2)  $<$  third base; (3)  $<$  half base; (4)  $>$  half rest base; (5)  $>$  base
123. E basally extended: (0) absent; (1) present
124. SES: (0) absent; (1) linear; (2) triangular; (3) quadrate; (4) single (Fig. 10A)
125. L SES/G W: (0) absent; (1)  $<$  eighth; (2)  $<$  quarter; (3)  $>$  quarter
126. G setae: (0) some; (1) dense; (2) tufts
127. G setae group: (0) absent; (1) not grouped; (2) apically; (3) medially; (4) laterally; (5) basally
128. Thick G setae number: (0) absent; (1) no thick setae; (2) some; (3) many; (4) 6-8 long
129. Thick G setae position: (0) absent; (1) no thick setae; (2) apically; (3) medially; (4) laterally; (5) basally
130. G subapical indentation: (0) absent; (1) slight  $<$  third; (2) narrowed apically  $>$  third
131. W G medial indentation: (0) absent; (1)  $<$  third; (2)  $>$  third; (3)  $>$  half
132. G medial weakness: (0) absent; (1) desclerotised line; (2) lines of weakness; (3) division medially

133. G ventral division: (0) line fusion basally; (1) line fusion entire; (2) fused medially; (3) fused basally; (4) fused
134. G medioventrally: (0) deeply indented; (1) indented medially; (2) flat; (3) convex shell
135. G ventral ridge: (0) absent; (1) slight; (2) distinct
136. G basal projection of the ventral ridge: (0) absent; (1) slight; (2) distinct; (3) recurved hook
137. G basomedial margin: (0) deeply indented; (1) indented, concave; (2) smooth, linear; (3) convex
138. H: (0) absent; (1) present
139. H laterally: (0) absent; (1) indented between G, smooth; (2) projecting; (3) with spur; (4) with finger (Fig. 10F)
140. RM: (0) small; (1) > L GS; (2) large recurved
141. L G A: (0) absent; (1) < GS; (2) > GS
142. G plates dorsoapically: (0) medially parallel; (1) angled basomedial plates diverge dorsally
143. G dorsoapical plates extension apically: (0) not extended apically; (1) small apical extension; (2) long apical extension beyond the base of the gonostyli
144. GS: (0) large base, long pointed flange; (1) laterally bifid; (2) simple curved hook; (3) medial hook; (4) lateral hook
145. GS basal projection: (0) absent; (1) small; (2) < GS
146. L AE: (0) < GS; (1) = GS; (2) > GS
147. AE EP separate: (0) absent; (1) present
148. EP: (0) absent; (1) present
149. EP deep ventral notch: (0) no EP; (1) absent; (2) medial
150. EP expanded apically: (0) no EP; (1) not expanded (Fig. 10H); (2)  $\leq 2 \times$  neck; (3)  $< 3 \times$  neck; (4)  $> 3 \times$  neck
151. EP apical plate: (0) no EP; (1) absent; (2) apical plate
152. EP medioventral projection: (0) no EP; (1) absent; (2) above AE
153. EP lateroapical lobes: (0) no E; (1) absent; (2) rounded dorsally; (3) pointed dorsally
154. EP lateral projection laterally: (0) no EP; (1) absent (2) lateral
155. EP medial projection laterally: (0) no EP; (1) absent; (2) medial
156. EP pair ventral projections: (0) no EP; (1) absent; (2) medial below AE
157. L EP: (0) no EP; (1) < GS base; (2) > GS base; (3) > G margin
158. EP recurved apicomедial projection: (0) no EP; (1) absent; (2) present dorsally
159. EP recurved apically: (0) no E; (1) absent; (2) apex recurved lateral view
160. EP apical setae: (0) no EP; (1) absent; (2) present
161. BP expanded: (0) not expanded; (1) round; (2) swollen spherical; (3) bilobed
162. LAEA: (0) spoon convex up; (1) spoon concave; (2) linear; (3) absent
163. L lateral AE A: (0) < L GS; (1) < G margin; (2) = G margin; (3) absent
164. AAES: (0) spoon convex; (1) spoon concave; (2) narrow wedge; (3) linear
165. AAES: (0) < B; (1) = L GS; (2) < G margin; (3) to G margin

166. EJA: (0) racquet - round; (1) linear  
 167. L EJA: (0) within G; (1) = G; (2) > G < L GS; (3) > G > L GS

**Female genitalia**

168. AC spines: (0) 3 prs; (1) 4 prs; (2) 5 prs; (3) > 5 prs; (4) > 10 prs  
 169. AC spines apically: (0) thin tapering; (1) broader spoon shaped  
 170.  $T_{9+10}$  sclerites: (0) 1 sclerite; (1) 3 sclerites  
 171.  $T_9$  dorsal medioapical unsclerotised lacuna: (0) absent; (1) present  
 172.  $T_8$  dorsal medioapical unsclerotised lacuna: (0) absent; (1) present  
 173.  $T_8$  hair: (0) apical half; (1) apical half bare medially; (2) apical edge  
 174.  $T_8$  laterally: (0) not indented; (1) indented arms  
 175.  $T_8$  A divided medially: (0) not divided; (1) slightly; (2) distinctly  $\geq$  half width  
 176.  $T_8$  A lateral projections: (0) absent; (1) slight; (2) not linear; (3) linear  
 177.  $T_8$  A L/medial W: (0) margin thickened, sclerotised; (1)  $\leq$  quarter; (2)  $\leq$  half; (3) <; (4)  $\geq$ ; (5) > 2 $\times$ ; (6)  $\geq$  3 $\times$   
 178.  $T_8$  A internal structure: (0) absent; (1) linear; (2) quadrate plate  
 179.  $S_8$  sclerites: (0) 1 linear 2 round; (1) 1 linear 2 round 1 medial; (2) U-shaped 2 triangular; (3) 2 round; (4) sheet  
 180. Furca: (0) U-shaped; (1) 3 separate sclerites; (2) 2 rods  
 181. ST tube: (0) short < third L pump; (1) present; (2) long >  $\times$  8 L pump  
 182. Basal endplate: (0) absent; (1) small; (2) present (Fig. 9H); (3) large  
 183. Basal endplate: (0) absent; (1) simple-thin processes; (2) thick processes; (3) funnel  
 184. Sperm pump: (0) short pump; (1) very long pump  
 185. Long pump papillae: (0) no long papillae; (1) unpigmented; (2) pigmented  
 186. Pump processes basally: (0) no processes; (1) short processes; (2) long papillae  
 187. Pump processes medially: (0) no processes; (1) short processes; (2) long papillae  
 188. Pump processes apically: (0) no processes; (1) short processes  
 189. Apical endplate: (0) large; (1) present; (2) small; (3) absent  
 190. Apical endplate: (0) absent; (1) simple- thin processes; (2) thick processes; (3) funnel; (4) double  
 191. SR: (0)  $L \leq W$ ; (1)  $L > W$ ; (2)  $L > 2 W$ ; (3)  $L > 4 W$ ; (4)  $L > 6 W$ ; (5)  $L > 8 W$ ; (6)  $L > 30 W$   
 192. ST basal sclerotised plate: (0) absent; (1) basal sclerotised plate  
 193. Tube ST to pump: (0) absent; (1) present; (2) long  
 194. SR shape: (0) round square; (1) oval; (2) pear, expanded apically; (3) long; (4) expanded basally  
 195. SR apically: (0) rounded blunt; (1) nipple; (2) narrowed; (3) knob  
 196. ST round basal bulb: (0) no round BB; (1) round BB  
 197. SR pigmented: (0) unpigmented; (1) pigmented; (2) basally unpigmented  
 198. ST long medial tube: (0) no medial tube; (1) tube medially  
 199. Long membranous base: (0) no long base; (1) long MB

- 200. ST long MB basally swollen: (0) no long base; (1) symmetrically; (2) asymmetrically
- 201. ST clear rings: (0) no rings; (1) clear ring; (2) long striated collar
- 202. SR to pump: (0) symmetrical; (1) asymmetrical
- 203. SR medially bent: (0) absent; (1) bent reservoir
- 204. SR apically bent: (0) absent; (1) tip only
- 205. Tubules: (0) absent; (1) present
- 206. SR walls: (0) thin unsclerotised; (1) thick sclerotised
- 207. SR walls: (0) no dimples; (1) with dimples thin unsclerotised

**Appendix 2.** Matrix of 207 characters for the Australian *Balaana* genus-group.

Taxa/Character	1	10	20
<i>Lig. satyrus</i>	1 0 2 0 3 0 0 1 4	1 2 2 1 3 3 1 2 1 2	2 1 0 1 1 3 1 1 3
<i>Lig. sinuatifascia</i>	1 1 1 0 2 0 0 1 3	1 2 1 1 3 2 1 2 1 2	2 1 0 1 0 2 2 1 3
<i>Bal. abscondita</i>	1 1 2 0 2 0 0 2 4	1 2 2 2 3 3 1 2 1 2	2 1 0 2 1 3 1 1 3
<i>Bal. bicuspis</i>	1 1 1 0 2 0 0 1 4	2 2 1 2 3 3 1 2 1 2	2 1 0 1 1 3 2 2 3
<i>Bal. centrosa</i>	1 1 2 0 3 0 0 1 4	1 3 2 2 3 3 1 2 1 2	2 1 0 1 1 3 2 2 3
<i>Bal. gigantea</i>	1 1 2 0 2 0 1 2 4	1 3 2 2 3 3 1 2 1 2	2 1 0 1 1 3 1 2 3
<i>Bal. kingcascadensis</i>	1 1 3 0 2 0 0 2 3	? 2 1 2 3 3 1 2 1 2	2 1 0 1 1 3 2 2 3
<i>Bal. latelimbata</i>	1 1 2 0 1 0 0 2 3	0 2 1 1 3 3 1 2 1 2	2 1 0 1 1 3 1 1 3
<i>K. adalaidica</i>	1 1 2 0 3 0 0 1 4	1 2 1 2 3 3 1 2 1 2	2 1 0 1 0 2 1 0 3
<i>K. corusca</i>	1 1 2 0 3 0 0 2 3	1 2 1 2 3 3 1 2 1 2	2 1 0 1 0 3 2 1 3
<i>K. irwini</i>	1 1 2 0 3 2 0 2 3	1 2 1 2 3 3 1 2 1 2	2 0 0 1 1 2 1 1 3
<i>K. westralica</i>	1 1 2 0 3 0 1 2 4	1 2 1 1 3 3 1 2 0 2	2 1 0 1 0 2 1 1 3
<i>Lar. bushblitzi</i>	1 1 2 0 1 0 0 2 3	? 2 2 2 3 3 1 2 1 2	2 1 0 2 0 3 1 1 3
<i>Lar. collessi</i>	1 1 2 0 3 0 0 1 3	? 3 2 2 3 3 1 2 1 2	2 1 0 1 1 3 1 2 3
<i>Lar. dimidiatipennis</i>	1 1 2 0 1 0 0 1 3	1 1 0 1 3 3 1 2 1 2	2 2 0 2 0 3 1 1 3
<i>Lar. zwicki</i>	1 1 2 0 1 0 0 2 3	? 2 2 2 3 3 1 2 1 2	2 0 0 1 0 3 1 2 3
<i>Mun. erugata</i>	1 1 2 0 2 0 0 1 3	1 2 1 1 3 3 1 2 1 2	2 1 0 1 0 2 2 2 3
<i>Mun. lepidokingi</i>	1 1 1 0 3 0 0 1 4	1 3 2 2 3 3 1 2 2 2	2 1 0 1 1 3 1 0 3
<i>Mun. paralutea</i>	1 2 2 0 2 0 0 1 4	1 3 2 2 3 2 1 2 1 2	2 1 0 1 1 2 1 2 3
<i>Muw. stellifera</i>	1 1 2 0 1 0 1 2 3	0 2 1 2 3 2 1 2 1 2	2 1 0 1 1 2 1 0 3
<i>Muw. vitreilinearis</i>	1 1 2 0 2 1 0 1 3	0 2 1 1 3 2 1 2 1 2	2 1 0 1 1 2 1 0 3
<i>Nga. trigonium</i>	1 1 2 0 3 0 1 2 3	0 2 1 1 3 3 1 2 1 2	2 1 0 1 1 2 2 1 3
<i>P.anaxios</i>	1 1 1 0 2 2 0 2 4	? 2 1 1 3 3 1 2 1 2	2 1 0 1 1 3 1 1 3
<i>P. basilikos</i>	1 1 2 0 3 0 0 3 3	0 2 1 2 3 3 1 2 0 2	2 1 0 1 0 3 1 2 3
<i>P. blackdownensis</i>	1 1 1 0 3 0 0 1 3	? 2 0 1 3 3 1 2 1 2	2 1 0 1 1 3 1 1 3
<i>P. bouchardi</i>	1 2 1 0 3 0 0 1 3	0 3 1 2 3 3 1 2 1 2	2 1 0 1 0 3 1 1 3
<i>P. cyanea</i>	1 1 1 0 2 0 0 2 3	1 2 2 1 3 3 1 2 1 2	2 1 0 1 1 3 1 2 3
<i>P. culgoastfoodplainensis</i>	1 1 2 0 3 0 0 2 4	? 3 2 2 3 3 1 2 0 2	2 1 0 2 1 3 2 0 3
<i>P. danielsi</i>	1 1 1 0 2 0 0 2 3	? 2 1 2 3 3 1 2 1 2	2 1 0 1 1 3 2 1 3
<i>P. decora</i>	1 1 1 0 3 1 0 2 3	1 2 1 1 3 3 1 2 1 2	2 2 0 1 0 3 1 1 3
<i>P. mackensiei</i>	1 1 2 0 2 2 0 2 ?	1 3 2 2 3 3 1 2 1 2	2 2 0 2 2 3 2 2 3
<i>P. marginicollis</i>	1 1 2 0 2 0 0 2 4	1 2 1 1 3 3 1 2 1 2	2 1 0 1 0 3 1 0 3
<i>P. viridula</i>	1 0 1 0 3 0 0 2 3	1 2 1 1 3 3 1 2 0 2	2 1 0 1 0 3 1 1 3
<i>P. whyalla</i>	1 1 2 0 3 0 0 1 3	1 2 2 2 3 3 1 2 0 2	2 1 0 1 1 3 1 1 3
<i>Wur. emu</i>	1 1 2 0 3 0 0 1 4	1 1 0 1 3 2 1 2 2 2	2 1 0 2 0 2 1 2 3
<i>Wur. impatientis</i>	1 3 3 0 2 0 0 2 4	1 2 1 2 3 3 1 2 1 2	1 0 0 1 1 1 1 0 3
<i>Wur. montebelloensis</i>	1 1 3 0 3 0 0 2 3	0 2 1 1 3 2 1 2 1 2	2 1 0 1 1 2 1 0 3
<i>Wur. norrisi</i>	1 1 2 0 2 0 0 2 3	0 2 2 1 3 3 1 2 1 2	2 0 0 1 0 2 1 1 3
<i>Wur. patrellia</i>	1 1 3 0 3 0 0 2 4	? 2 0 1 3 2 1 2 1 2	2 1 0 1 2 1 1 1 3
<i>Wur. skevingtoni</i>	1 3 3 0 2 0 0 1 3	? 2 1 2 3 3 1 2 1 2	1 1 0 1 0 1 1 0 3
<i>Wur. windorah</i>	1 2 2 0 2 0 0 1 3	1 2 0 1 3 2 1 2 2 2	2 1 0 1 0 3 1 2 3
<i>Wur. wyperfeldensis</i>	1 1 2 0 3 ? 0 1 3	1 0 1 2 3 2 1 2 1 2	2 1 0 1 0 2 2 1 3



Taxa/Character	30	40	50
<i>Lig. satyrus</i>	1 4 0 0 1 2 2 0 2 2	2 2 1 2 2 0 0 2 2 2	2 1 0 2 2 1 3 2
<i>Lig. sinuatifascia</i>	1 4 0 0 1 2 2 0 2 2	2 3 1 2 2 0 0 2 2 2	2 1 0 2 2 0 2 2
<i>Bal. abscondita</i>	1 2 0 0 1 2 2 1 2 2	2 2 1 2 2 1 0 2 2 1	2 2 1 2 2 1 1 2
<i>Bal. bicuspis</i>	1 3 0 0 1 2 2 0 2 2	2 2 1 2 2 0 0 2 2 1	2 1 1 2 1 1 2 2
<i>Bal. centrosa</i>	1 3 0 1 1 2 2 1 2 2	2 2 1 2 2 0 0 2 2 2	2 1 2 2 2 0 2 2
<i>Bal. gigantea</i>	1 3 0 0 1 2 2 1 2 2	2 2 1 2 2 0 1 2 2 2	2 1 1 1 2 0 1 2
<i>Bal. kingascadensis</i>	1 2 0 0 1 2 2 1 2 2	2 2 1 2 2 1 0 2 2 2	2 1 1 2 2 0 2 2
<i>Bal. latelimbata</i>	1 2 0 0 1 2 2 1 2 2	2 2 1 2 2 0 0 2 2 2	2 1 1 1 2 0 2 2
<i>K. adelaidica</i>	1 2 0 0 1 2 2 1 2 2	2 2 1 2 2 1 0 2 2 2	2 1 0 2 2 0 1 2
<i>K. corusca</i>	1 3 0 0 1 2 2 1 2 2	2 2 1 2 2 1 0 2 2 1	2 1 0 2 2 0 2 2
<i>K. irwini</i>	1 3 0 0 1 2 2 1 2 2	2 2 1 2 2 2 0 2 2 1	2 1 1 2 2 0 2 2
<i>K. westralica</i>	1 2 0 0 1 2 2 0 2 2	2 3 1 2 2 1 0 2 2 1	2 1 0 2 2 1 2 2
<i>Lar. bushblitzi</i>	1 3 0 0 1 2 2 1 2 2	2 2 1 2 2 1 0 1 2 1	2 1 1 2 2 1 2 2
<i>Lar. collessi</i>	1 3 0 0 1 2 2 1 2 2	2 2 1 2 2 0 0 2 2 1	2 1 1 2 2 0 2 2
<i>Lar. dimidiatipennis</i>	? ? ? ? 1 2 2 1 2 2	2 3 1 2 2 0 1 2 2 2	2 1 0 2 2 0 1 2
<i>Lar. zwicki</i>	1 3 0 0 1 2 2 1 2 2	2 2 1 2 2 1 0 2 2 1	2 1 0 2 2 0 1 2
<i>Mun. erugata</i>	1 3 0 0 1 2 2 1 2 2	2 2 1 2 2 1 0 2 2 2	2 1 1 1 2 0 2 2
<i>Mun. lepidokingi</i>	1 3 0 0 1 2 2 1 2 2	2 2 1 2 2 1 1 2 2 1	2 1 0 2 0 1 2 2
<i>Mun. paralutea</i>	1 2 0 0 1 2 2 1 2 2	2 2 1 2 2 0 1 2 2 1	2 1 1 1 2 0 2 2
<i>Muw. stellifera</i>	1 3 0 0 1 2 2 1 2 2	2 2 1 2 2 0 0 2 2 2	2 1 1 1 2 0 2 2
<i>Muw. vitreolinearis</i>	1 3 0 1 1 2 2 1 2 2	2 2 1 2 2 1 0 1 2 2	2 2 1 1 2 1 2 2
<i>Nga. trigonium</i>	1 4 0 0 1 2 2 1 2 2	2 2 1 2 2 0 0 2 2 2	2 1 0 1 2 1 2 2
<i>P. anxios</i>	1 3 0 1 1 0 2 1 2 2	2 2 1 0 2 0 0 2 2 2	2 1 1 1 2 0 2 2
<i>P. basilikos</i>	1 4 0 0 1 1 2 1 2 2	2 2 1 1 2 1 0 2 2 1	2 1 2 1 2 0 2 2
<i>P. blackdownensis</i>	1 4 0 0 1 0 2 1 2 2	2 2 1 0 2 0 0 1 2 1	2 1 1 1 2 0 2 2
<i>P. bouchardi</i>	1 3 0 0 1 1 2 1 2 2	2 2 1 0 2 1 0 2 2 1	2 1 1 1 2 0 2 2
<i>P. cyanea</i>	1 3 0 1 1 1 2 1 2 2	2 2 1 2 2 0 0 2 2 1	2 1 1 1 2 0 2 2
<i>P. culgoafloodplainensis</i>	1 4 0 0 1 0 ? ? 2 2	2 ? 1 0 2 1 0 1 2 1	2 1 1 1 1 1 2 2
<i>P. danieli</i>	1 3 0 0 1 0 2 1 2 2	2 2 1 0 2 0 0 2 2 2	2 1 1 1 2 0 2 2
<i>P. decora</i>	1 3 0 0 1 0 2 0 2 2	2 2 1 0 2 0 0 2 2 1	2 1 1 1 2 0 2 2
<i>P. mackensiei</i>	1 2 0 0 1 1 2 1 1 2	2 2 0 1 2 0 0 0 2 1	2 1 1 1 0 1 2 2
<i>P. marginicollis</i>	1 2 0 0 1 0 2 1 2 2	2 2 1 0 2 0 0 1 2 1	2 1 1 1 2 0 2 2
<i>P. viridula</i>	1 3 0 0 1 0 2 1 2 2	2 2 1 0 2 0 0 1 2 1	2 1 1 1 2 0 2 2
<i>P. whyalla</i>	1 3 0 0 1 0 2 1 2 2	2 2 1 0 2 0 0 2 2 1	2 1 1 1 2 0 2 2
<i>Wur. emu</i>	1 1 0 0 1 2 2 1 2 2	2 2 1 2 2 0 0 1 2 1	2 1 2 1 2 0 2 2
<i>Wur. impatientis</i>	1 2 0 0 1 2 2 1 2 2	2 2 1 2 2 1 0 2 2 1	2 1 0 2 2 0 2 2
<i>Wur. montebelloensis</i>	1 4 0 0 1 2 2 1 2 2	2 2 1 2 2 1 0 2 2 2	2 1 0 2 2 0 2 2
<i>Wur. norrisi</i>	1 4 0 0 1 2 2 1 2 2	2 2 1 2 2 0 0 1 2 1	2 1 0 2 2 0 2 2
<i>Wur. patrellia</i>	1 2 0 0 1 2 2 1 2 2	2 2 1 2 2 1 0 2 2 1	2 1 2 1 0 0 1 2
<i>Wur. skevingtoni</i>	1 3 0 0 1 2 2 0 2 2	2 3 1 2 2 0 0 0 2 1	2 1 1 2 2 0 2 2
<i>Wur. windorah</i>	1 2 0 0 1 2 2 1 2 2	2 2 1 2 2 0 0 2 2 1	2 3 2 1 2 0 2 2
<i>Wur. wyperfeldensis</i>	1 3 0 0 1 2 2 1 2 2	2 2 1 2 2 0 0 2 2 1	2 1 2 2 0 0 1 2

Taxa/Character	60	70	80
<i>Lig. satyrus</i>	1 2 2 3 2 1 2 0 1 1	0 0 2 1 1 0 2 0 0 2	1 1 2 2 0 1 2 1
<i>Lig. sinuatifascia</i>	2 2 2 2 2 1 2 0 1 1	0 0 2 1 2 0 2 0 0 2	1 1 1 1 0 1 2 1
<i>Bal. abscondita</i>	2 2 2 1 2 1 2 0 1 1	0 0 2 1 2 0 3 0 0 2	0 1 2 1 0 1 2 1
<i>Bal. bicuspis</i>	1 2 2 2 2 1 2 0 1 1	0 0 2 1 2 0 4 0 0 2	0 2 2 2 0 1 2 1
<i>Bal. centrosa</i>	2 2 2 2 2 1 2 0 1 1	0 0 2 1 2 0 3 0 0 2	0 1 2 1 0 1 2 1
<i>Bal. gigantea</i>	1 2 2 2 2 1 2 0 1 1	0 0 2 1 2 0 4 0 0 2	0 2 2 1 0 1 2 0
<i>Bal. kingcascadensis</i>	1 2 2 2 2 1 2 0 1 1	0 0 2 1 2 0 3 0 0 2	0 1 2 1 0 0 2 1
<i>Bal. latelimbata</i>	2 2 2 2 2 1 2 0 1 1	0 0 2 1 2 0 3 0 0 2	0 1 2 1 0 1 2 1
<i>K. adelaidica</i>	0 2 2 2 2 1 2 0 1 1	0 0 2 1 2 0 3 0 0 2	0 1 2 1 0 1 2 0
<i>K. corusca</i>	1 2 2 2 2 1 2 0 1 1	0 0 2 1 2 0 3 0 0 2	0 2 2 2 0 1 2 0
<i>K. irwini</i>	0 2 2 2 2 1 2 0 1 1	0 0 2 1 2 0 3 0 0 2	0 2 2 2 0 1 2 0
<i>K. westralica</i>	1 2 2 2 2 1 2 0 1 1	0 0 2 1 2 0 4 0 0 2	0 1 2 1 0 1 2 0
<i>Lar. bushblitzi</i>	1 2 2 1 2 1 2 0 1 1	0 0 2 1 2 0 4 0 0&1 2	0 2 2 1 0 1 2 1
<i>Lar. collessi</i>	2 2 2 2 2 1 2 0 1 1	0 0 2 1 2 0 3 0 0 2	0 2 1 1 0 1 2 1
<i>Lar. dimidiatipennis</i>	1 2 2 ? ? 1 2 0 1 1	0 0 2 1 2 0 4 0 0 2	0 1 1 2 0 0 1 1
<i>Lar. zwicki</i>	0 2 2 2 2 1 2 0 1 1	0 0 2 1 2 0 3 0 0 2	0 1 1 1 0 0 2 1
<i>Mun. erugata</i>	1 2 2 2 2 1 2 0 1 1	0 0 2 1 2 0 4 0 0 2	0 1 2 1 0 0 2 1
<i>Mun. lepidokingi</i>	2 2 2 2 2 1 2 0 1 1	0 0 2 1 1 0 3 0 0 2	0 1 2 1 0 1 2 1
<i>Mun. paralutea</i>	1 2 2 2 2 1 2 0 1 1	0 0 2 1 2 0 3 0 0 2	0 2 1 0 0 1 2 1
<i>Muw. stellifera</i>	1 2 2 2 2 1 2 0 1 1	0 0 2 1 2 0 4 0 0 2	0 2 2 2 0 0 2 1
<i>Muw. vitreilinearis</i>	1 2 2 2 2 1 2 0 1 1	0 0 2 1 3 0 4 0 0 2	0 1 2 2 0 1 2 1
<i>Nga. trigonium</i>	1 2 2 2 2 1 2 0 1 1	0 0 2 1 2 0 3 0 0 2	0 1 2 1 0 0 2 1
<i>P. anxios</i>	1 3 2 2 2 1 2 0 1 1	0 0 2 1 3 0 3 0 0 2	0 1 0 0 0 0 1 1
<i>P. basilikos</i>	1 3 2 2 2 1 2 0 1 1	0 0 2 1 3 0 4 0 0&1 2	0 0 1 0 0 0 2 1
<i>P. blackdownensis</i>	1 3 2 2 2 1 2 0 1 1	0 0 2 1 3 0 4 0 0 2	0 1 0 1 0 0 1 1
<i>P. bouchardi</i>	1 3 2 2 2 1 2 0 1 1	0 0 2 1 3 1 3 0 0 2	0 0 1 0 0 0 2 1
<i>P. cyanea</i>	1 3 2 2 2 1 2 0 1 1	0 0 2 1 3 0 4 0 0 2	0 1 0 0 0 0 1 1
<i>P. culgoafloodplainensis</i>	1 3 2 2 2 1 2 0 1 1	0 0 2 1 3 0 4 0 0 2	0 0 1 0 0 0 1 1
<i>P. danielsi</i>	1 3 2 2 2 1 2 0 1 1	0 0 2 1 3 0 4 0 0 2	0 0 1 0 0 0 2 1
<i>P. decora</i>	1 2 2 2 2 1 2 0 1 1	0 0 2 1 2 0 3 0 0 2	0 1 0 1 0 0 1 1
<i>P. mackensiei</i>	1 3 2 2 2 1 2 0 1 1	0 0 2 1 2 0 4 0 1 2	0 1 1 1 1 0 1 1
<i>P. marginicollis</i>	2 3 2 2 2 1 2 0 1 1	0 0 2 1 3 0 3 0 0 2	0 0 1 1 0 0 1 1
<i>P. viridula</i>	1 3 2 2 2 1 2 0 1 1	0 0 2 1 3 0 4 0 0 2	0 0 1 0 0 0 2 1
<i>P. whyalla</i>	1 3 2 2 2 1 2 0 1 1	0 0 2 1 3 1 4 0 0 2	0 0 1 0 0 0 2 1
<i>Wur. emu</i>	2 2 2 2 2 1 2 0 1 1	0 0 2 1 2 0 4 0 0 2	0 1 2 1 0 1 2 0
<i>Wur. impatientis</i>	2 2 2 2 2 1 2 0 1 1	0 0 2 1 3 0 4 0 0 2	0 1 2 1 0 1 2 0
<i>Wur. montebelloensis</i>	2 2 2 2 2 1 2 0 1 1	0 0 2 1 3 0 4 0 0 2	0 2 2 2 0 1 2 0
<i>Wur. norrisi</i>	2 2 2 2 2 1 2 0 1 1	0 0 2 1 2 0 2 0 0 2	0 1 2 1 0 1 2 1
<i>Wur. patrellia</i>	2 2 2 2 2 1 2 0 1 1	0 0 2 1 3 0 4 0 0 2	0 2 2 2 0 1 2 0
<i>Wur. skevingtoni</i>	2 2 2 2 2 1 2 0 1 1	0 0 2 1 2 0 2 0 0 2	0 1 2 1 0 1 2 1
<i>Wur. windorah</i>	2 2 2 1 2 1 2 0 1 1	0 0 2 1 2 0 4 0 0 2	0 2 2 1 0 1 2 1
<i>Wur. wyperfeldensis</i>	2 2 2 1 2 1 2 0 1 1	0 0 2 1 2 0 3 0 0 2	0 1 2 1 0 1 2 1

Taxa/Character	90			100			110																						
<i>Lig. satyrus</i>	2	1	0	0	2	1	2	1	0	2	2	0	2	1	1	3	2	1	0	1	1	1	2	3	2	0	0		
<i>Lig. sinuatifascia</i>	3	1	0	0	3	1	2	0	0	2	2	0	1	1	1	1	3	2	1	0	1	1	1	2	3	2	2	2	
<i>Bal. abscondita</i>	3	1	0	0	1	1	2	0	0	2	2	0	1	0	1	0	3	2	1	0	1	1	1	2	2	0	1	0	
<i>Bal. bicuspis</i>	3	1	0	0	2	1	2	0	0	2	2	0	1	0	1	0	3	2	1	0	1	1	1	2	1	0	1	0	
<i>Bal. centrosa</i>	3	2	0	0	1	1	2	0	1	2	2	0	2	1	1	0	3	2	1	0	1	1	1	2	3	2	2	0	
<i>Bal. gigantea</i>	3	3	0	0	2	1	2	0	1	2	2	0	3	1	1	0	3	2	1	0	1	1	1	2	1	0	2	0	
<i>Bal. kingcascadensis</i>	3	1	0	0	1	1	2	0	0	2	2	0	1	1	1	0	3	2	1	0	1	1	1	2	2	0	2	0	
<i>Bal. latelimbata</i>	3	3	0	0	1	1	2	0	0	2	2	0	1	0	1	0	3	2	1	0	1	1	1	2	1	0	2	0	
<i>K. adelaidica</i>	3	1	0	0	1	1	2	0	1	2	2	0	1	0	1	0	3	2	1	0	1	1	1	2	2	0	1	1	
<i>K. corusca</i>	3	1	0	0	1	2	2	0	1	2	2	0	1	0	1	0	3	2	1	0	1	1	1	2	2	0	2	1	
<i>K. irwini</i>	3	1	0	0	1	1	2	0	1	2	2	0	1	0	1	0	3	2	1	0	1	1	1	2	2	0	2	1	
<i>K. westralica</i>	3	2	0	0	1	1	2	0	1	2	2	0	1	0	1	0	3	2	1	0	1	1	1	2	2	0	2	1	
<i>Lar. bushblitzi</i>	3	2	1	0	1	1	2	0	1	2	2	0	1	0	1	1	3	2	0	0	1	2	1	2	1	0	1	1	
<i>Lar. collessi</i>	3	2	0	0	1	1	2	0	0	2	2	0	2	1	1	1	3	2	1	0	1	2	1	2	2	0	2	1	
<i>Lar. dimidiatipennis</i>	3	2	0	0	1	1	2	0	0	2	2	0	1	0	1	0	4	2	1	0	1	1	1	2	3	1	2	2	
<i>Lar. zuicki</i>	3	2	1	0	1	1	2	1	1	2	2	0	2	0	1	1	3	2	1	0	1	2	1	2	1	0	1	0	
<i>Mun. erugata</i>	3	1	0	0	1	2	2	0	0	2	2	0	2	1	1	0	3	2	1	0	1	1	1	2	2	0	2	0	
<i>Mun. lepidokingi</i>	3	1	0	0	1	1	2	1	0	2	2	0	1	1	1	0	3	2	1	0	1	1	1	2	1	0	2	0	
<i>Mun. paralutea</i>	3	1	0	0	1	1	2	0	0	2	2	0	2	0	1	1	3	2	1	0	1	1	1	2	1	0	2	0	
<i>Muu. stellifera</i>	3	2	0	0	1	1	2	0	0	2	2	0	2	0	1	0	3	2	1	0	1	2	1	2	1	2	2	0	
<i>Muu. vitreilinearis</i>	3	2	1	0	1	2	2	0	0	2	2	0	1	0	1	0	3	2	1	1	1	1	1	2	1	0	1	1	
<i>Nga. trigonium</i>	3	2	0	0	1	2	2	0	0	2	2	0	2	0	1	1	3	2	1	0	1	1	1	0	0	0	1	0	
<i>P. anaxios</i>	3	3	0	0	1	1	2	1	0	2	2	0	2	0	1	1	3	0	1	0	1	1	1	2	2	2	2	1	
<i>P. basilikos</i>	3	3	0	0	1	1	2	0	0	2	2	0	4	1	1	1	3	0	1	0	1	1	1	2	2	2	3	1	
<i>P. blackdownensis</i>	3	3	0	0	1	1	2	1	1	2	2	0	2	0	1	1	3	0	1	0	1	1	1	2	2	2	3	0	
<i>P. bouchardi</i>	3	3	0	0	1	1	2	1	0	2	2	0	1	1	0	1	3	1	1	0	1	1	1	2	2	2	2	1	
<i>P. cyanea</i>	3	3	0	0	2	1	2	1	0	2	2	0	2	1	1	1	3	1	1	0	1	1	1	2	1	0	2	0	
<i>P. culgoafloodplainensis</i>	3	2	0	0	2	1	2	0	0	2	2	0	3	0	1	1	4	0	1	0	1	1	1	2	2	2	2	0	
<i>P. danielsi</i>	3	3	0	0	1	1	2	0	0	2	2	0	3	1	1	1	3	0	1	0	1	1	1	2	2	2	2	1	
<i>P. decora</i>	3	3	0	1	2	2	2	0	0	2	2	0	2	0	1	1	3	0	1	0	1	1	1	2	1	0	3	1	
<i>P. mackensiei</i>	3	3	0	0	1	1	2	0	1	2	2	0	0	1	1	1	4	1	1	0	1	1	?	?	?	?	?	?	
<i>P. marginicollis</i>	3	3	0	0	1	1	2	1	1	2	2	0	1	1	0	1	3	0	1	0	1	1	1	2	2	2	3	0	
<i>P. viridula</i>	3	3	0	0	2	2	2	0	0	2	2	0	3	1	1	1	3	0	1	0	1	1	1	2	1	0	3	0	
<i>P. whyalla</i>	3	3	0	0	2	1	2	0	0	2	2	0	3	1	1	1	2	0	1	0	1	1	1	2	2	2	3	0	
<i>Wur. emu</i>	3	1	0	0	1	1	2	0	0	2	2	0	1	1	1	0	3	2	1	0	1	1	1	2	1	0	1	0	
<i>Wur. impatientis</i>	2	1	0	0	1	1	2	1	1	0	2	2	0	1	1	1	1	3	2	1	0	1	1	1	0	0	0	1	0
<i>Wur. montebelloensis</i>	3	1	0	0	1	1	2	0	0	2	2	0	1	1	1	0	4	2	1	0	1	1	1	2	1	0	1	0	
<i>Wur. norrisi</i>	3	1	0	0	1	1	2	0	0	2	2	0	1	1	1	0	3	2	1	0	1	1	1	0	0	0	1	0	
<i>Wur. patrellia</i>	3	1	0	0	1	1	2	0	0	2	2	0	0	1	1	1	3	2	1	0	1	1	1	2	1	0	2	0	
<i>Wur. skevingtoni</i>	2	1	0	0	2	1	2	1	1	0	2	2	0	1	1	1	1	3	2	1	0	1	2	1	0	0	0	1	0
<i>Wur. windorah</i>	3	3	0	0	1	1	2	0	0	2	2	0	1	0	1	1	3	2	1	0	1	1	1	2	1	0	1	0	
<i>Wur. wyperfeldensis</i>	3	3	0	0	1	1	2	0	0	2	2	0	1	1	1	1	3	2	1	0	1	1	1	2	1	0	1	0	

Taxa/Character	120	130	140
<i>Lig. satyrus</i>	2 0 2 0 1 2 1 3 3 3	0 1 3 3 0 0 0 1 1 1	1 1 0 2 1 1 1 0
<i>Lig. sinuatifascia</i>	3 0 5 0 3 3 2 3&4&5 3 3&4&5	0 3 3 3 0 2 3 1 1 1	2 1 0 2 1 2 0 0
<i>Bal. abscondita</i>	2 1 0 0 1 3 2 3 3 3	0 1 3 1 1 0 0 1 1 1	2 1 0 2 1 1 1 0
<i>Bal. bicuspis</i>	2 0 0 0 1 3 2 3 3 3	0 1 3 3 1 0 0 1 1 1	2 1 0 1 1 1 0 0
<i>Bal. centrosa</i>	2 0 0 0 1 3 2 3 3 3	0 1 3 3 1 0 0 1 1 1	1 1 0 2 1 1 0 0
<i>Bal. gigantea</i>	3 0 0 0 3 2 2 3 3 3	0 2 3 3 2 0 0 0 1 1	1 2 0 2 1 1 0 0
<i>Bal. kingascadensis</i>	3 0 2 1 1 3 2 3 3 3	0 2 3 3 0 0 0 1 1 1	2 2 0 2 1 1 1 0
<i>Bal. latelimbata</i>	3 0 0 0 1 3 2 3 3 3	0 2 3 3 0 0 0 1 1 1	1 1 0 2 1 2 0 0
<i>K. adelaidica</i>	3 0 0 0 1 3 2 3 3 3	0 3 3 3 2 2 2 0 1 1	2 1 0 2 1 1 1 0
<i>K. corusca</i>	4 0 0 0 1 3 2 3 3 3	0 3 3 3 2 2 2 0 1 1	2 1 0 2 1 1 0 0
<i>K. irwini</i>	3 0 0 0 1 3 2 3 3 3	0 2 3 3 2 2 2 0 1 1	2 1 0 2 1 1 0 0
<i>K. westralica</i>	3 0 0 0 1 3 2 3 3 3	0 3 3 3 2 2 2 0 1 1	2 1 0 2 1 1 1 0
<i>Lar. bushblitzi</i>	2 0 4 0 1 3 2 3 3 3	0 3 1 2 1 2 2 1 1 2	2 1 0 2 1 1 0 0
<i>Lar. collessi</i>	4 0 0 0 4 3 2 4 3 3	0 3 3 3 0 2 2 0 1 2	2 1 0 2 1 1 0 0
<i>Lar. dimidiatipennis</i>	4 0 3 0 1 2 2 3 3 3	0 3 1 2 0 2 1 0 1 1	2 1 0 2 1 1 0 0
<i>Lar. zwicki</i>	4 0 1 1 1 3 2 3 3 3	0 3 3 3 0 2 1 1 1 2	2 1 0 2 1 1 0 0
<i>Mun. erugata</i>	3 0 0 0 1 3 2 3 3 3	0 3 3 3 0 0 0 0 1 2	2 2 0 2 1 1 0 0
<i>Mun. lepidokingi</i>	3 0 0 0 1 2 2 3 3 3	0 3 3 1 1 1 0 0 1 2	2 2 0 1 1 1 0 0
<i>Mun. paralutea</i>	3 0 1 0 1 2 2 3 3 3	0 3 3 3 1 1 0 0 1 2	2 2 0 2 1 1 0 0
<i>Muw. stellifera</i>	4 0 4 0 3 3 2 3 3 3	0 3 3 1 0 2 2 0 1 2	2 1 0 2 1 2 0 0
<i>Muu. vitreilinearis</i>	3 0 1 0 3 3 2 3 3 3	0 3 3 3 2 2 1 0 1 1	2 1 0 2 1 2 0 0
<i>Nga. trigonium</i>	2 0 0 0 4 3 2 3 3 3	0 3 3 1 2 1 0 0 1 4	2 1 0 1 1 1 0 0
<i>P. anaxios</i>	0 0 0 1 2 2 1 3 4 5	0 3 3 3 0 1 0 1 1 2	2 1 0 2 1 1 0 0
<i>P. basilikos</i>	2 0 0 1 4 2 1 3 3 5	0 3 3 1 0 1 0 1 1 2	2 1 0 1 1 1 0 0
<i>P. blackdownensis</i>	2 0 0 1 3 2 1 3 4 5	0 3 3 3 0 2 1 1 1 2	2 1 0 2 1 1 1 0
<i>P. bouchardi</i>	3 1 0 1 2 2 1 3 4 5	0 2 3 1 1 1 0 1 1 2	1 1 0 2 1 1 0 0
<i>P. cyanea</i>	0 0 0 1 2 2 1 3 4 5	0 3 0 1 0 1 0 1 1 2	2 1 0 2 1 1 1 0
<i>P. culgoafloodplainensis</i>	2 0 0 1 4 3 2 3 3 3	0 3 0 0 0 1 0 1 1 2	1 1 0 2 1 1 0 0
<i>P. danielsi</i>	2 0 0 1 4 2 1 3 4 5	0 3 3 1 0 0 0 1 1 2	2 1 0 2 1 1 2 0
<i>P. decora</i>	3 0 0 1 3 2 2 3&5 4 3&5	0 3 3 3 1 1 0 0 1 2	2 1 0 2 1 2 0 0
<i>P. mackensiei</i>	? ? ? ? ? ? ? ? ? ?	? ? ? ? ? ? ? ? ? ?	? ? ? ? ? ? ? ? ? ?
<i>P. marginicollis</i>	2 1 0 1 3 2 1 3 4 5	0 3 3 3 0 1 0 1 1 2	2 1 0 1 1 1 1 0
<i>P. viridula</i>	0 0 0 1 4 2 1 3 4 5	0 3 3 1 0 1 0 1 1 2	2 1 0 1 1 1 0 0
<i>P. whyalla</i>	2 0 0 1 3 2 1 3 4 5	0 3 3 1 0 1 0 1 1 2	2 1 0 2 1 1 0 0
<i>Wur. emu</i>	3 0 0 0 1 3 2 3 3 3	0 3 3 1 0 1 0 0 1 1	2 1 0 1 1 2 0 0
<i>Wur. impatientis</i>	4 0 0 0 1 2 2 3 3 3	0 3 3 1 0 2 2 0 1 2	2 1 0 2 1 1 1 0
<i>Wur. montebelloensis</i>	3 0 0 0 1 3 2 3 3 3	0 2 3 3 0 2 1 0 1 3	2 1 0 2 1 2 1 0
<i>Wur. norrisi</i>	3 0 0 0 1 2 2 3 3 3	0 3 3 1 0 2 2 0 1 1	2 1 0 1 1 2 1 0
<i>Wur. patrellia</i>	3 0 0 0 1 3 2 3 3 3	0 2 3 1 0 2 1 0 1 1	2 1 0 2 1 2 0 0
<i>Wur. skevingtoni</i>	4 0 0 0 1 3 2 3 3 3	0 3 3 3 0 2 2 1 1 1	2 1 0 1 1 1 1 0
<i>Wur. windorah</i>	3 0 1 0 4 2 2 3 3 3	0 3 3 3 2 2 2 0 1 3	2 1 0 1 1 1 0 0
<i>Wur. wyperfeldensis</i>	3 0 0 0 1 3 2 3 3 3	0 3 3 1 0 2 1 0 1 2	2 1 0 2 1 2 1 0

Taxa/Character	150	160	170
<i>Lig. satyrus</i>	3 1 2 1 2 1 1 3 1 1	1 1 0 1 2 3 0 3 3 0	0 0 0 2 1 1 0 7
<i>Lig. sinuatifascia</i>	2 2 2 1 2 1 1 2 1 1	2 1 0 1 2 3 0 3 2 0	0 0 0 2 1 0 1 3
<i>Bal. abscondita</i>	1 1 2 1 1 2 1 3 1 1	1 1 0 2 2 2 0 3 1 0	0 0 0 2 1 0 2 3
<i>Bal. bicuspis</i>	1 1 2 1 2 1 1 3 1 1	2 1 0 1 2 2 0 2 1 0	0 0 0 2 1 1 1 4
<i>Bal. centrosa</i>	1 1 2 1 1 2 1 2 1 1	2 1 0 1 2 2 0 3 0 0	0 0 0 2 1 1 0 4
<i>Bal. gigantea</i>	1 1 2 1 1 1 1 2 1 1	1 0 0 2 2 2 0 3 1 0	0 0 0 2 1 1 1 2
<i>Bal. kingcascadensis</i>	1 1 2 1 1 1 1 3 1 1	1 1 0 2 2 2 0 3 0 0	0 0 0 2 1 1 2 2
<i>Bal. latelimbata</i>	1 1 2 1 1 1 1 2 1 1	1 1 0 2 2 2 0 3 1 0	0 0 0 2 1 1 1 3
<i>K. adelaidica</i>	1 1 2 2 2 2 1 3 1 1	1 1 0 1 2 2 0 2 0 0	0 0 0 2 1 0 1 3
<i>K. corusca</i>	1 1 2 2 2 2 1 3 1 1	1 1 1 1 2 2 0 2 0 0	0 0 0 2 1 1 1 3
<i>K. irwini</i>	2 1 2 2 2 2 1 2 1 1	2 0 0 2 2 2 0 2 0 0	0 0 0 2 1 1 0 3
<i>K. westralica</i>	1 1 2 2 2 2 1 3 1 1	1 1 1 1 2 2 0 2 0 0	0 0 0 2 1 1 0 3
<i>Lar. bushblitzi</i>	2 1 1 2 2 2 1 2 1 1	1 1 0 1 2 2 0 3 ? ?	? ? ? ? ? ? ? ?
<i>Lar. collessi</i>	1 1 2 2 2 2 1 3 1 1	1 1 0 1 2 2 0 3 1 0	0 0 1 2 1 0 1 3
<i>Lar. dimidiatipennis</i>	1 1 2 2 2 2 1 3 1 1	1 1 0 2 2 2 0 3 1 0	0 0 0 2 1 1 0 4
<i>Lar. zwicki</i>	2 1 1 2 2 1 1 2 1 1	1 2 0 1 2 2 0 3 ? ?	? ? ? ? ? ? ? ?
<i>Mun. erugata</i>	2 1 2 1 1 2 1 3 1 1	1 0 0 2 2 3 0 3 0 0	0 0 0 2 1 1 0 3
<i>Mun. lepidokingi</i>	1 1 2 1 2 2 1 2 1 1	1 1 0 2 2 3 0 3 0 0	0 0 0 2 1 1 0 4
<i>Mun. paralutea</i>	1 1 2 1 1 1 1 3 1 1	1 0 0 1 2 3 0 3 1 0	0 0 0 2 1 2 1 3
<i>Muw. stellifera</i>	2 1 1 2 2 1 1 2 1 1	1 3 0 1 2 3 0 3 2 0	0 0 0 2 1 0 1 4
<i>Muw. vitreilinearis</i>	1 1 1 2 2 2 1 3 1 1	1 1 0 1 2 3 0 3 1 0	0 0 0 2 1 0 2 5
<i>Nga. trigonium</i>	1 1 2 1 1 2 1 2 1 1	1 3 0 2 2 3 0 3 1 0	0 0 0 2 1 0 1 3
<i>P.anaxios</i>	2 1 1 1 1 2 1 2 1 1	1 0 0 2 2 2 0 3 ? ?	? ? ? ? ? ? ? ?
<i>P. basilikos</i>	2 1 1 1 1 2 1 2 2 1	1 0 0 2 2 2 0 3 2 0	0 0 0 2 1 0 1 2
<i>P. blackdownensis</i>	3 1 1 1 2 2 1 2 1 1	1 0 0 2 2 2 0 3 ? ?	? ? ? ? ? ? ? ?
<i>P. bouchardi</i>	2 1 1 1 1 2 1 2 1 1	1 0 0 2 2 3 0 3 2 0	0 0 0 2 1 1 3 2
<i>P. cyanea</i>	2 1 1 1 2 2 1 2 1 1	1 0 0 2 2 3 0 3 2 0	0 0 0 2 1 0 2 1
<i>P. culgoafloodplainensis</i>	2 1 2 1 2 2 1 2 1 1	1 1 0 2 2 2 0 3 ? ?	? ? ? ? ? ? ? ?
<i>P. danielsi</i>	2 1 1 1 1 2 1 3 1 1	1 0 0 2 2 2 0 3 ? ?	? ? ? ? ? ? ? ?
<i>P. decora</i>	2 1 2 1 2 2 1 2 2 1	1 1 0 2 2 3 0 3 2 0	0 0 0 2 1 1 0 2
<i>P. mackensiei</i>	? ? ? ? ? ? ? ? ? ?	? ? ? ? ? ? ? ? 1 0	0 0 0 2 1 0 3 2
<i>P. marginicollis</i>	3 1 1 1 2 2 1 2 1 1	1 0 0 2 2 2 0 3 1 0	0 0 0 2 1 2 1 2
<i>P. viridula</i>	3 1 1 1 1 2 1 2 1 1	1 1 0 2 2 3 0 3 2 0	0 0 0 2 1 0 2 2
<i>P. whyalla</i>	2 1 1 1 2 2 1 2 1 1	1 0 0 2 2 3 0 3 2 0	0 0 0 2 1 2 1 2
<i>Wur. emu</i>	1 1 2 2 2 2 1 2 1 1	1 1 0 2 2 2 0 3 1 0	0 0 0 2 1 1 1 3
<i>Wur. impatientis</i>	3 1 2 1 2 2 1 3 1 1	1 0 0 1 2 2 0 3 0 0	0 0 0 2 1 1 2 5
<i>Wur. montebelloensis</i>	1 1 2 2 1 2 1 3 1 1	2 1 0 2 2 2 0 3 0 0	0 0 0 2 1 0 1 4
<i>Wur. norrisi</i>	3 1 2 1 1 2 1 3 1 1	1 0 0 1 2 2 0 3 0 0	0 0 0 2 1 1 2 6
<i>Wur. patrellia</i>	1 1 2 2 2 2 1 3 1 1	1 1 0 2 2 2 0 3 ? ?	? ? ? ? ? ? ? ?
<i>Wur. skevingtoni</i>	3 1 2 1 1 2 1 3 1 1	1 1 0 2 2 2 0 2 ? ?	? ? ? ? ? ? ? ?
<i>Wur. windorah</i>	1 1 2 2 2 2 1 2 1 1	1 0 0 2 2 2 0 3 0 0	0 0 0 2 1 0 0 5
<i>Wur. wyperfeldensis</i>	2 1 2 2 1 2 1 3 1 1	2 1 0 2 2 2 0 3 0 0	0 0 0 2 1 0 1 4



Taxa/Character	180	190	200	207
<i>Lig. satyrus</i>	0 1 2 2 0 2 2 2 1 1	1 0 0 1 0 0 1 1 1 0	0 2 1 0 0 1 1 0	
<i>Lig. sinuatifascia</i>	0 1 2 2 0 1 1 2 1 1	1 0 0 0 0 0 1 1 0 0	0 1 1 0 0 1 1 0	
<i>Bal. abscondita</i>	0 2 2 1 0 2 2 2 1 1	1 4 1 0 3 0 1 1 0 0	0 1 0 0 0 1 1 0	
<i>Bal. bicuspis</i>	0 1 2 2 0 2 2 2 1 1	1 5 0 1 3 1 1 1 0 0	0 1 0 0 0 1 1 0	
<i>Bal. centrosa</i>	0 1 2 2 0 2 2 2 1 2	1 5 0 0 3 0 1 1 0 0	0 1 0 0 0 1 1 0	
<i>Bal. gigantea</i>	0 1 2 2 0 2 2 2 1 1	1 5 0 0 3 0 1 1 0 0	0 1 0 0 0 1 1 0	
<i>Bal. kingascadensis</i>	0 2 2 2 0 2 2 2 1 2	1 5 0 0 3 0 1 1 0 0	0 1 0 0 0 1 1 0	
<i>Bal. latelimbata</i>	0 1 2 1 0 1 1 2 1 1	1 5 0 0 3 0 1 1 0 0	0 1 0 0 0 1 1 0	
<i>K. adelaidica</i>	0 2 2 2 0 2 2 2 1 2	1 1 0 1 0 0 1 1 0 0	0 1 1 0 0 1 1 0	
<i>K. corusca</i>	0 1 2 2 0 2 1 2 1 2	1 0 0 1 0 0 1 1 0 0	0 1 1 0 0 1 1 0	
<i>K. irwini</i>	0 1 2 2 0 2 2 2 1 2	1 0 0 1 0 0 1 1 0 0	0 1 1 0 0 1 1 0	
<i>K. westralica</i>	0 1 2 2 0 1 2 2 1 2	1 0 0 1 0 0 1 1 0 0	0 1 1 0 0 1 1 0	
<i>Lar. bushblitzi</i>	? ? ? ? ? ? ? ? ? ?	? ? ? ? ? ? ? ? ? ?	? ? ? ? ? ? ? ? ? ?	
<i>Lar. collessi</i>	0 1 1 2 0 1 1 2 1 2	1 1 0 1 0 0 1 0 0 0	0 2 1 0 0 1 1 0	
<i>Lar. dimidiatipennis</i>	0 1 2 2 0 1 1 2 1 2	1 1 0 0 0 1 1 1 0 0	0 1 0 0 0 0 1 0	
<i>Lar. zwicki</i>	? ? ? ? ? ? ? ? ? ?	? ? ? ? ? ? ? ? ? ?	? ? ? ? ? ? ? ? ? ?	
<i>Mun. erugata</i>	0 2 2 2 0 1 1 2 1 2	1 0 0 1 0 0 1 0 0 0	0 1 1 0 0 1 1 0	
<i>Mun. lepidokingi</i>	0 2 1 2 0 1 1 1 1 1	1 1 1 1 0 1 1 1 0 0	0 1 0 0 0 1 1 0	
<i>Mun. paralutea</i>	0 1 2 1 0 1 1 2 1 2	1 1 0 1 0 1 1 1 0 0	0 1 1 0 0 1 1 0	
<i>Muw. stellifera</i>	0 1 2 2 0 1 1 2 1 2	1 0 0 0 0 1 1 1 0 0	0 1 1 0 0 1 1 0	
<i>Muw. vitreilinearis</i>	0 1 2 2 0 2 2 2 1 2	2 1 0 1 0 1 1 1 0 0	0 1 1 0 0 1 1 0	
<i>Nga. trigonium</i>	0 1 2 2 0 1 1 2 1 1	1 1 1 0 0 0 0 1 0 0	0 1 0 0 0 1 1 0	
<i>P. anaxios</i>	? ? ? ? ? ? ? ? ? ?	? ? ? ? ? ? ? ? ? ?	? ? ? ? ? ? ? ? ? ?	
<i>P. basilikos</i>	0 2 2 2 0 2 1 2 1 0	1 0 0 0 0 0 1 1 0 0	0 1 0 0 0 1 1 0	
<i>P. blackdownensis</i>	? ? ? ? ? ? ? ? ? ?	? ? ? ? ? ? ? ? ? ?	? ? ? ? ? ? ? ? ? ?	
<i>P. bouchardi</i>	0 2 2 2 0 1 1 2 1 1	1 0 0 0 0 0 1 1 0 0	0 1 0 0 0 1 1 0	
<i>P. cyanea</i>	0 2 2 2 0 2 2 2 1 0	1 0 0 0 0 0 1 1 0 0	0 1 0 0 0 1 1 0	
<i>P. culgoafloodplainensis</i>	? ? ? ? ? ? ? ? ? ?	? ? ? ? ? ? ? ? ? ?	? ? ? ? ? ? ? ? ? ?	
<i>P. danielsi</i>	? ? ? ? ? ? ? ? ? ?	? ? ? ? ? ? ? ? ? ?	? ? ? ? ? ? ? ? ? ?	
<i>P. decora</i>	0 2 2 1 0 1 2 2 1 1	1 0 0 0 0 0 1 1 0 0	0 1 0 0 0 1 1 0	
<i>P. mackensiei</i>	0 ? ? ? ? ? ? ? ? ? ?	? ? ? ? ? ? ? ? ? ?	? ? ? ? ? ? ? ? ? ?	
<i>P. marginicollis</i>	0 2 2 2 0 2 1 2 1 0	1 0 0 0 0 0 1 1 0 0	0 1 0 0 0 1 1 0	
<i>P. viridula</i>	0 2 2 2 0 2 1 2 1 0	1 0 0 0 0 0 1 1 0 0	0 1 0 0 0 1 1 0	
<i>P. whyalla</i>	0 2 2 2 0 2 1 2 1 0	1 0 0 0 0 0 1 1 0 0	0 1 0 0 0 1 1 0	
<i>Wur. emu</i>	0 1 2 2 0 2 1 2 1 1	1 0 0 0 0 0 1 1 0 0	0 1 1 0 0 1 1 0	
<i>Wur. impatientis</i>	0 1 1 2 0 2 1 2 1 2	1 1 0 1 0 1 1 1 0 0	0 1 1 0 0 1 1 0	
<i>Wur. montebelloensis</i>	0 1 2 1 0 1 1 2 1 2	1 1 0 1 0 0 1 1 0 0	0 1 1 0 0 1 1 0	
<i>Wur. norrisi</i>	0 1 1 2 0 2 1 2 1 2	1 1 0 1 0 1 1 1 0 0	0 1 1 0 0 1 1 0	
<i>Wur. patrellia</i>	? ? ? ? ? ? ? ? ? ?	? ? ? ? ? ? ? ? ? ?	? ? ? ? ? ? ? ? ? ?	
<i>Wur. skevingtoni</i>	? ? ? ? ? ? ? ? ? ?	? ? ? ? ? ? ? ? ? ?	? ? ? ? ? ? ? ? ? ?	
<i>Wur. windorah</i>	0 1 1 1 0 2 2 2 1 2	1 0 0 0 0 0 1 1 0 0	0 1 1 0 0 1 1 0	
<i>Wur. wyperfeldensis</i>	0 1 2 1 0 1 1 2 1 1	2 1 0 1 0 0 1 1 0 0	0 1 1 0 0 1 1 0	

### Appendix 3

Matrix of 207 characters for the Australian *Balaana* genus-group. (doi: 10.3897/zookeys.150.1881.app) File format: NEXUS matrix file.

**Explanation note:** This NEXUS phylogenetic matrix of 207 morphological characters for 42 Australian exoprosopine beeﬂies was created in Mesquite v2.74. The file also contains the most parsimonious tree 5 file from the PAUP\* maximum parsimony phylogenetic analysis. The data is also deposited in the Dryad Repository: doi: 10.5061/dryad.5j64k and in the TREEBASE Repository at <http://purl.org/phylo/treebase/phylo/phylo/study/TB2:S12050>

**Copyright notice:** This dataset is made available under the Open Database License (<http://opendatacommons.org/licenses/odbl/1.0/>). The Open Database License (ODbL) is a license agreement intended to allow users to freely share, modify, and use this Dataset while maintaining this same freedom for others, provided that the original source and author(s) are credited.

---

**Citation:** Lambkin CL, Bartlett JS (2011) Bush Blitz aids description of three new species and a new genus of Australian beeﬂies (Diptera, Bombyliidae, Exoprosopini). In: Smith V, Penev L (Eds) e-Infrastructures for data publishing in biodiversity science. ZooKeys 150: 231–280. doi: 10.3897/zookeys.150.1881.app

---