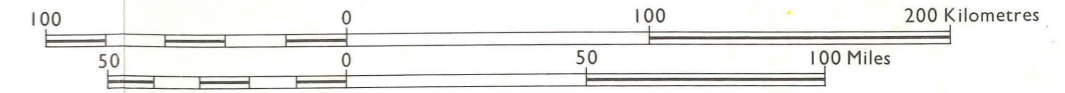


QUEENSLAND  
DEPARTMENT OF PRIMARY INDUSTRIES  
**CONDAMINE-MARANOVA BASIN EVALUATION OF RESOURCES**  
**SOUTHERN QUEENSLAND**  
**GENERAL REFERENCE MAP**

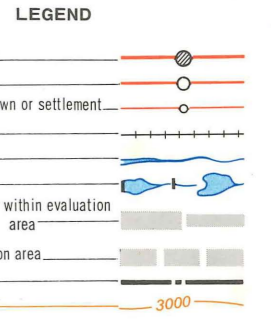
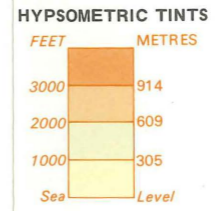
SCALE 1 : 2 500 000



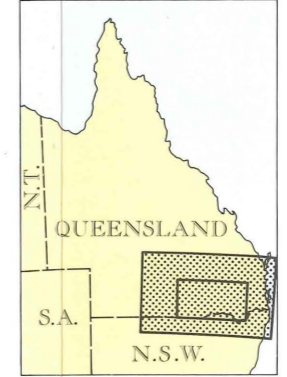
UNIVERSE TRANSVERSE MERCATOR PROJECTION  
100 000 metre Australian Map Grid, Zones 55 & 56  
(Grid values are shown in full at the south west corner of the map)

CONTOUR INTERVAL 1,000 FEET (305 METRES)  
Vertical Datum : Mean Sea Level

CARTOGRAPHY BY A.L. CHANDICA



LOCATION MAP



NOTE. The grid reference obtained for any point on this map can be used to locate that same point on any other map of this area showing the Australian Map Grid e.g. Topographic maps (metric) recently published by Division of National Mapping, Canberra or Survey Office, Department of Lands, Brisbane.

COMPILED by E.J. Weston (Agriculture Branch), C.N. Mason (Economic Services Branch) and R.D.H. Armstrong (Sheep and Wool Branch), Queensland Department of Primary Industries, Brisbane.

PREPARED by the Division of Land Utilisation, Queensland Department of Primary Industries, Brisbane.

CARTOGRAPHIC BASE compiled from the Brisbane - Charleville - Bourke - Armidale 1 : 1 000 000 International Map of the World using selected topographic information plotted onto the Australian Map Grid.

COLOUR SEPARATION for Hypsonetric Tints by the Lithographic Section, Survey Office, Department of Lands, Brisbane.

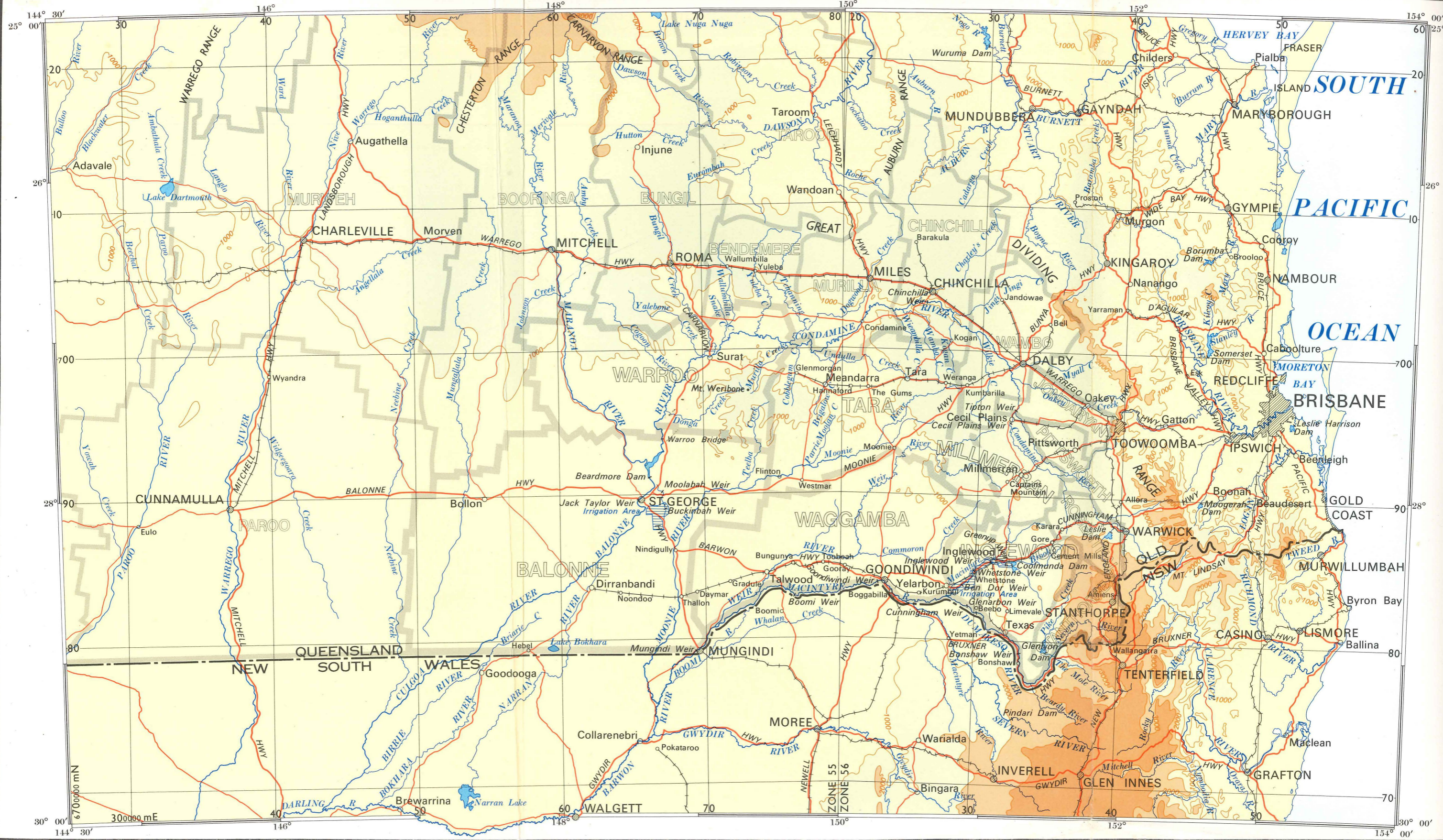
PRINTED by S.G. Reid, Government Printer, Brisbane, SEPTEMBER 1974

KEY TO 1 : 250 000 AREAS

ADAVALE	AUGATHELLA	EDDYSTONE	TAROOM	MUNDUBBERA	MARYBOROUGH	WIDE BAY
QUILPIE	CHARLEVILLE	MITCHELL	ROMA	CHINCHILLA	GYMPIE	
TOOMPINE	WYANDRHOPE	OMEBOIN	SURAT	DALBY	IPSWICH	BRISBANE
EULO	CUNNAMULLA	DIRRANBANDI	ST. GEORGE	GOONDIWINDI	WARWICK	TWEED HEADS
YANTABULLA	ENNGONIA	ANGLEDOL	MOREE	INVERELL	GRAFTON	MACLEAN







SOUTH

PACIFIC

OCEAN

BRISBANE

GOLD COAST

MURWILLUMBAH

LISMORE

GRAFTON

MACLEAN

30° 00'

154° 00'

70

80

80

80

80

80

80

80

80

80

80

80

80

80

80

80

80

80

80

80

80

80

80

80

80

80

80

80

80

80

80

25° 00'

20

20

20

20

20

20

20

20

20

20

20

20

20

20

20

20

20

20

20

20

20

20

20

20

20

20

20

20

20

20

20

25° 00'

144° 30'

146

146

146

146

146

146

146

146

146

146

146

146

146

146

146

146

146

146

146

146

146

146

146

146

146

146

146

146

146

146

146

144° 30'

30

40

50

60

70

80

90

100

110

120

130

140

150

160

170

180

190

200

210

220

230

240

250

260

270

280

290

300

310

320

330

340

350

144° 30'

146

146

146

146

146

146

146

146

146

146

146

146

146

146

146

146

146

146

146

146

146

146

146

146

146

146

146

146

146

146

146

144° 30'

30

40

50

60

70

80

90

100

110

120

130

140

150

160

170

180

190

200

210

220

230

240

250

260

270

280

290

300

310

320

330

340

350

144° 30'

146

146

146

146

146

146

146

146

146

146

146

146

146

146

146

146

146

146

146

146

146

146

146

146

146

146

146

146

146

146

146

144° 30'

30

40

50

60

70

80

90

100

110

120

130

140

150

160

170

180

190

200

210

220

230

240

250

260

270

280

290

300

310

320

330

340

350

144° 30'

146

146

146

146

146

146

146

146

146

146

146

146

146

146

146

146

146

146

146

146

146

146

146

146

146

146

146

146

146

146

146

144° 30'

30

40

50

60

70

80

90

100

110

120

130

140

150

160

170

180

190

200

210

220

230

240

250

260

270

280

290

300

310

320

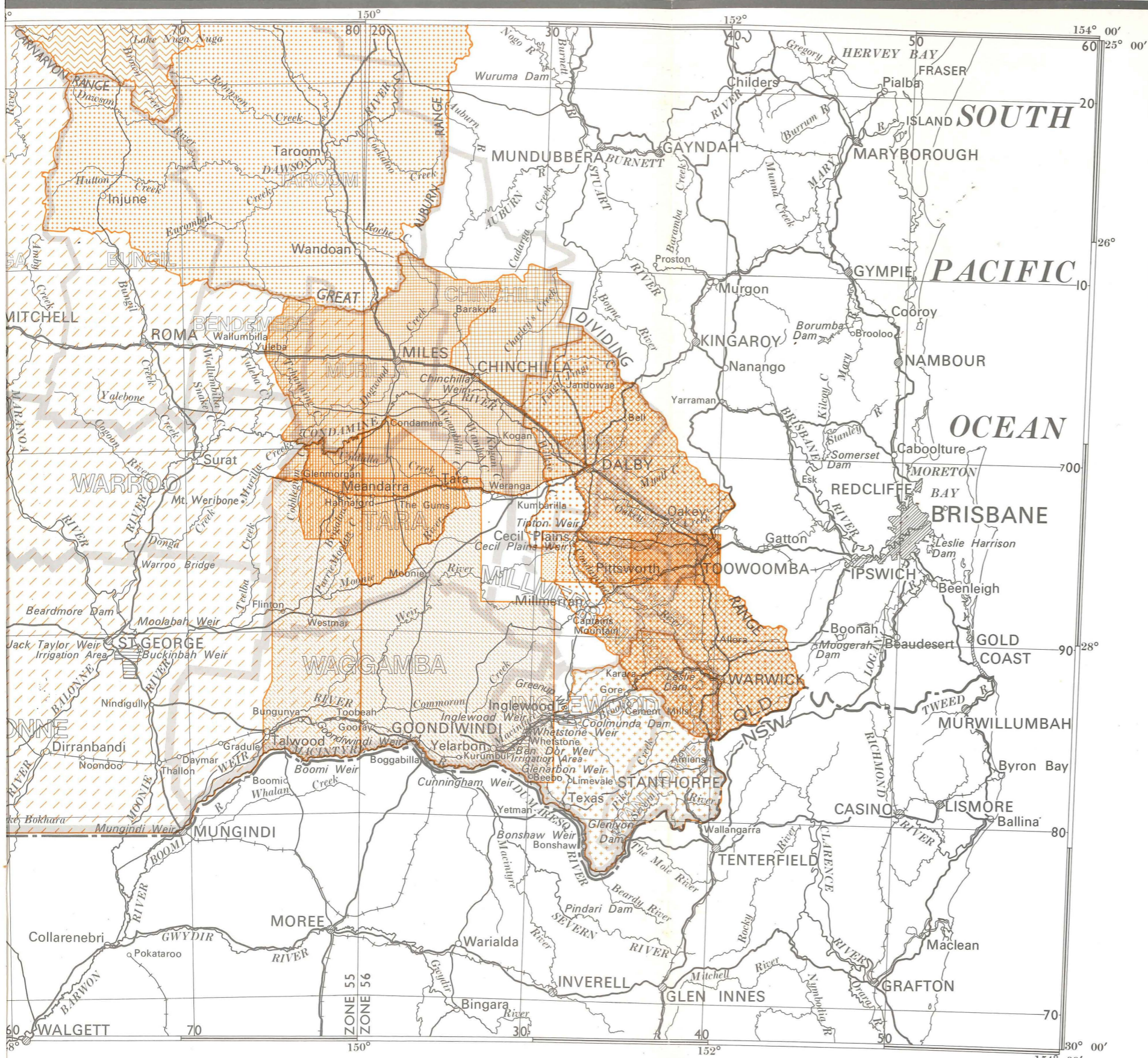
330

340

350



# CONDAMINE-MARANOA BASIN EVALUATION OF RESOURCES SOUTHERN QUEENSLAND SOIL, VEGETATION and LAND USE STUDIES



LEGEND

1. Studies specific to the Condamine - Maranoa basin or adjacent areas.
2. Studies covering more generalised areas but containing information relevant to the Condamine - Maranoa basin. These are not shown on the map.

	Allen and Skerman (1952)	Blake (1938)
	Beckmann and Thompson (1960)	Everist (1949)
	Dawson (1972a)	Isbell (1962)
	Dawson (1972b)	Isbell et al. (1967)
	Galloway et al. (1974)	McTaggart (1936)
	Holland and Moore (1962)	Moore and Perry (1970)
	Isbell (1957)	Northcote (1966)
	S[kerman] and A[llen] (1952)	Northcote and Skene (1972)
	Speck et al. (1968)	Plumb (ed.) (1966)
	Story, Galloway and Fitzpatrick (1967)	Prescott (1931)
	Thompson and Beckmann (1959)	Prescott (1944)
	Turner, Boyland and Dawson (in preparation 1974)	Skerman (1959)
	Vandersee (1972)	Skerman (1970)
	van Dijk (in preparation 1974)	Stephens (1961)
	Wills (in preparation 1974)	Williams (1959)

COMPILED by E.J. Weston (Agriculture Branch), C.N. Nason (Economic Services Branch) and R.D.H. Armstrong (Sheep and Wool Branch), Queensland Department of Primary Industries, Brisbane.

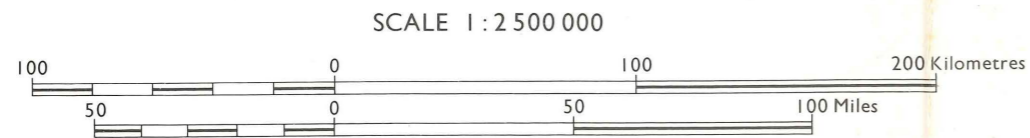
PREPARED by the Division of Land Utilisation, Queensland Department of Primary Industries, Brisbane.

CARTOGRAPHIC BASE compiled from the Brisbane - Charleville - Bourke - Armidale 1 : 1 000 000 International Map of the World using selected topographic information plotted onto the Australian Map Grid.

PRINTED by S.G. Reid, Government Printer, Brisbane. SEPTEMBER 1974







UNIVERSE TRANSVERSE MERCATOR PROJECTION  
 100 000 metre Australian Map Grid, Zones 55 & 56  
 (Grid values are shown in full at the south west corner of the map)  
 CARTOGRAPHY BY A.L. CHANDICA



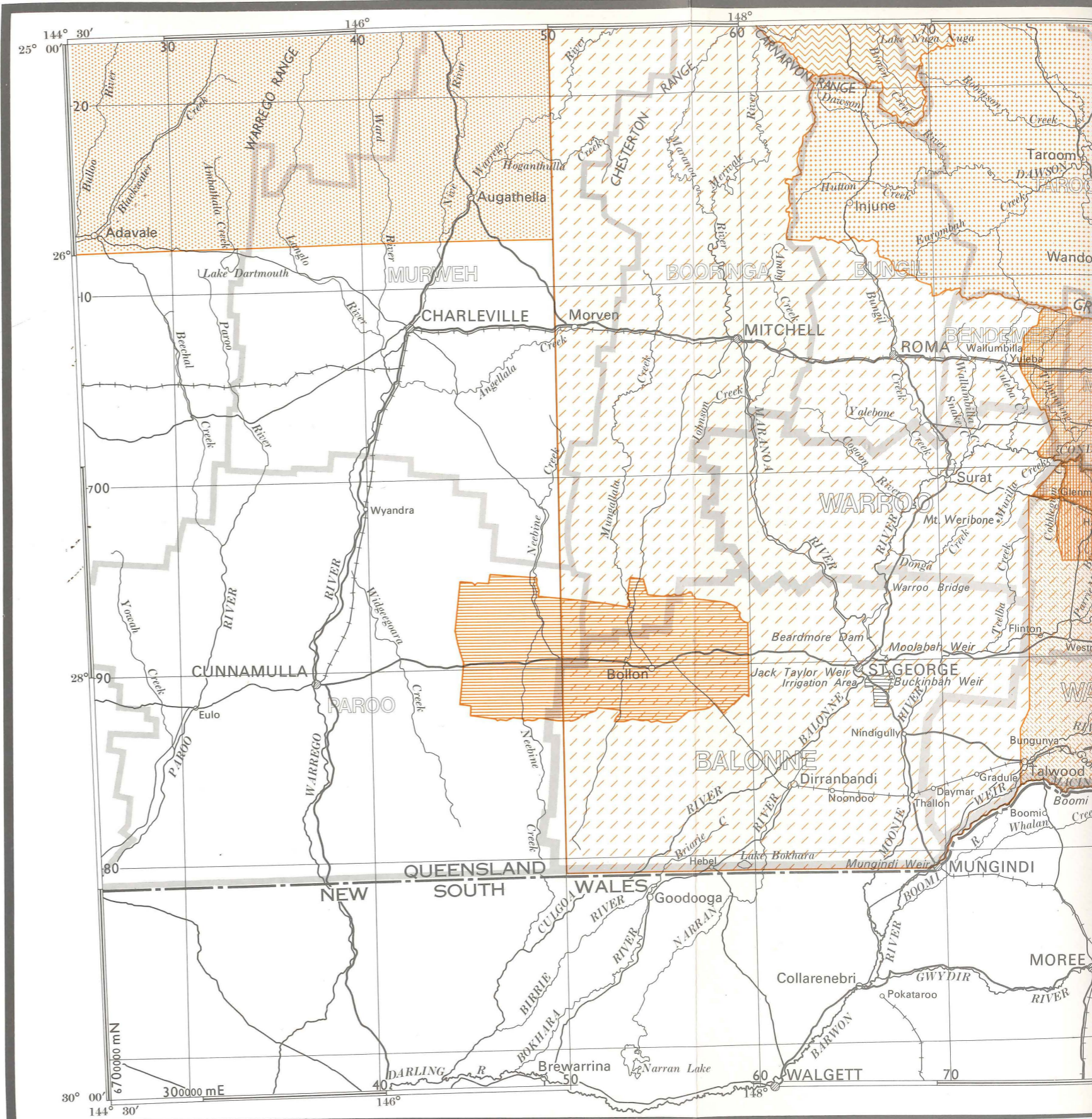
**LEGEND**

- Highway; Principal town
- Main road; Town
- Secondary road; Minor town or settlement
- Railway
- River or stream
- Dam; Weir; Lake
- Local authority boundary within evaluation area; outside evaluation area
- Eastern limit of evaluation area
- State boundary

**KEY TO 1 : 250 000 AREAS**

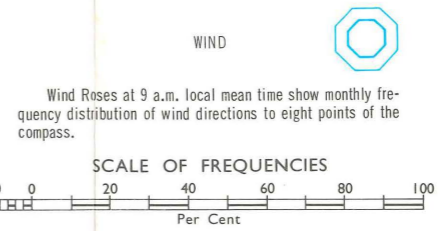
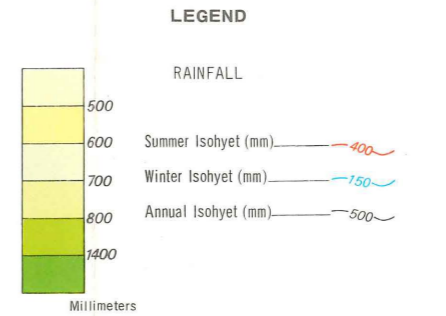
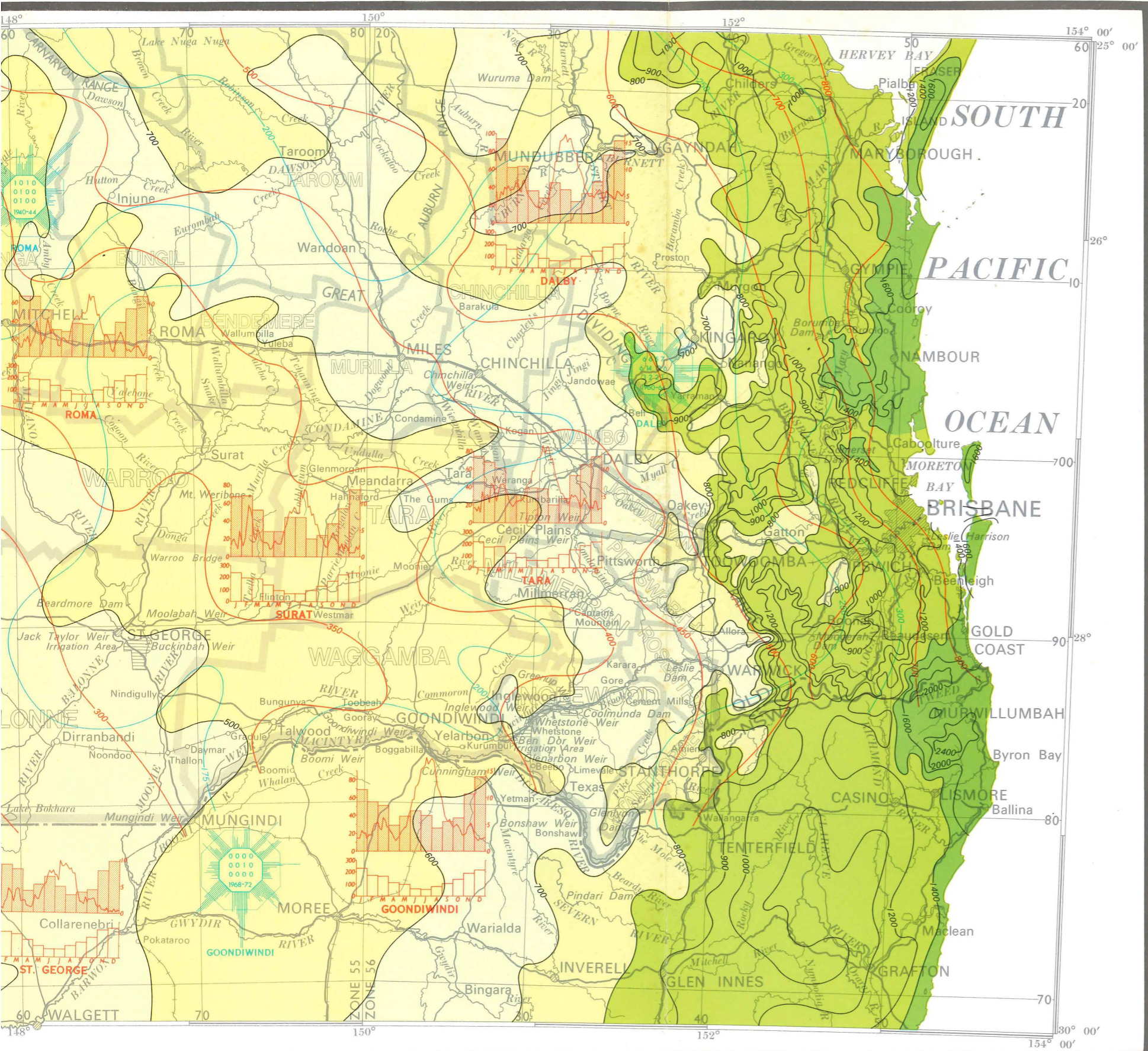
ADAVALE	AUGA- THELLA	EDDY- STONE	TAROOM	MUN- DUBBERA	MARY- BOROUGH	WIDE BAY
OUILPIE	CHARLE- VILLE	MITCHELL	ROMA	CHIN- CHILLA	GYMPIE	
TOOMPINE	WYANDRA	HOMEBOIN	SURAT	DALBY	IPSWICH	BRISBANE
EULO	CUNNA- MULLA	DIRРАН- BANDI	ST. GEORGE	GOONDI- WINDI	WARWICK	TWEED HEADS
YANTA- BULLA	ENNGONIA	ANGLE- DOL	MOREE	INVERELL	GRAFTON	MACLEAN

NOTE. The grid reference obtained for any point on this map can be used to locate that same point on any other map of this area showing the Australian Map Grid e.g. topographic maps (metric) recently published by Division of National Mapping, Canberra or Survey Office, Department of Lands, Brisbane.





# CONDAMINE-MARANOVA BASIN EVALUATION OF RESOURCES SOUTHERN QUEENSLAND CLIMATIC FEATURES



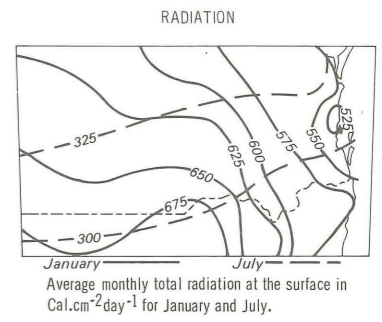
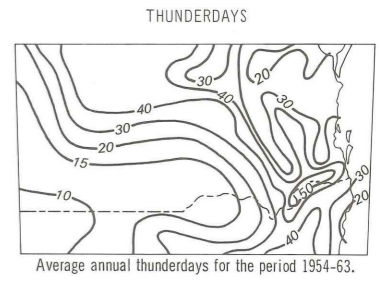
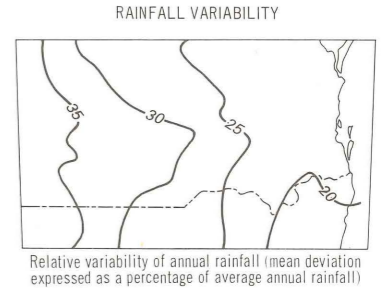
**EXPLANATION OF WIND ROSES**

The sides of the octagons face towards the cardinal and semi-cardinal points. Twelve columns representing months of the year project from each side and their lengths are proportional to the percentage frequencies of the winds from the given direction in successive months, working clockwise from January to December. Columns representing winds of equal frequency (i.e. 12½%) from the eight directions would all be enclosed within the outer octagon. The percentage frequency of calms in each of the twelve months is shown within the inner octagon. Wind Roses are based on data collected over four year periods.



These figures show the accumulation of mean soil moisture in comparison with rainfall and evaporation. The scale of the graph of mean available soil moisture is shown on the right hand side of each figure. The upper histogram represents rainfall and the lower one evaporation. All moisture units are mm. The figures were constructed from data derived from a water balance model which, when applied to daily rainfall records for the period 1937 to 1968, determined mean soil moisture content at five day intervals. The equation assumes two moisture stores, one above and one below wilting point. The total soil moisture capacity is divided between these two stores on a 60/40 basis, which is consistent with a clay or clay-loam soil type. Only store one, that above wilting point, is depicted here.

**NOTE:** Information presented on this map was obtained from the following sources:— Summer and winter isohyets and wind roses — developed from Bureau of Meteorology, Brisbane (unpublished); annual isohyets — compiled for period 1920-1969 by the Queensland Irrigation and Water Supply Commission; rainfall variability — Dick (1958); average annual thunderdays — Bureau of Meteorology (1967); radiation — Bureau of Meteorology (1964); soil/water relations: water balance model — Russell (pers. comm.); rainfall — Bureau of Meteorology (1966), evaporation — Bureau of Meteorology, Brisbane (unpublished).



COMPILED by E.J. Weston (Agriculture Branch), C.N. Nason (Economic Services Branch) and R.D.H. Armstrong (Sheep and Wool Branch), Queensland Department of Primary Industries, Brisbane.

PREPARED by the Division of Land Utilisation, Queensland Department of Primary Industries, Brisbane.

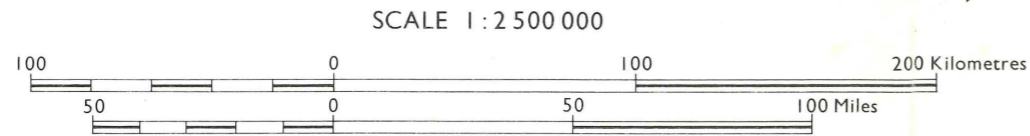
CARTOGRAPHIC BASE compiled from the Brisbane — Charleville — Bourke — Armidale 1 : 1 000 000 International Map of the World using selected topographic information plotted onto the Australian Map Grid.

COLOUR SEPARATION of Annual Rainfall Zones by the Lithographic Section, Survey Office, Department of Lands, Brisbane.

PRINTED by S.G. Reid, Government Printer, Brisbane. SEPTEMBER 1974

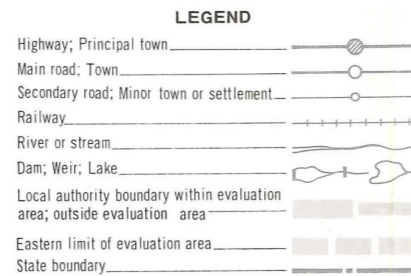






UNIVERSE TRANSVERSE MERCATOR PROJECTION  
100 000 metre Australian Map Grid, Zones 55 & 56  
(Grid values are shown in full at the south west corner of the map)

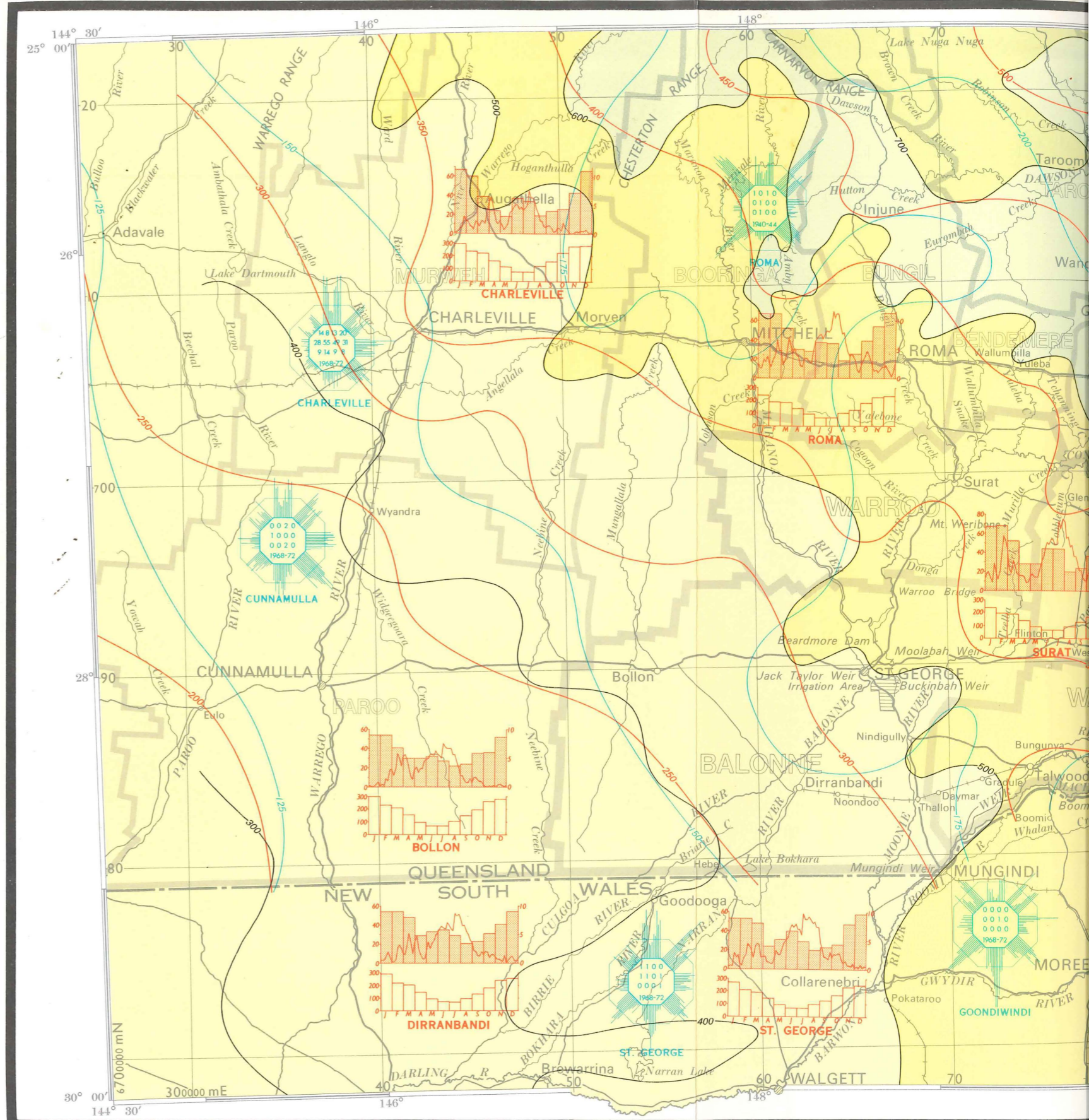
CARTOGRAPHY BY A.L. CHANDICA



KEY TO 1 : 250 000 AREAS

ADAVALE	AUGA-THELLA	EDDY-STONE	TAROOM	MUN-DUBBERA	MARY-BOROUGH	WIDE BAY
QUILPIE	CHARLE-VILLE	MITCHELL	ROMA	CHIN-CHILLA	GYMPIE	
TOOMPINE	WYANDRA	HOMEBOIN	SURAT	DALBY	IPSWICH	BRISBANE
EULO	CUNNA-MULLA	DIRRAN-BANDI	ST. GEORGE	GOONDI-WINDI	WARWICK	TWEED HEADS
YANTA-BULLA	ENNGONIA	ANGLE-DOL	MOREE	INVERELL	GRAFTON	MACLEAN

NOTE. The grid reference obtained for any point on this map can be used to locate that same point on any other map of this area showing the Australian Map Grid e.g. topographic maps (metric) recently published by Division of National Mapping, Canberra or Survey Office, Department of Lands, Brisbane.

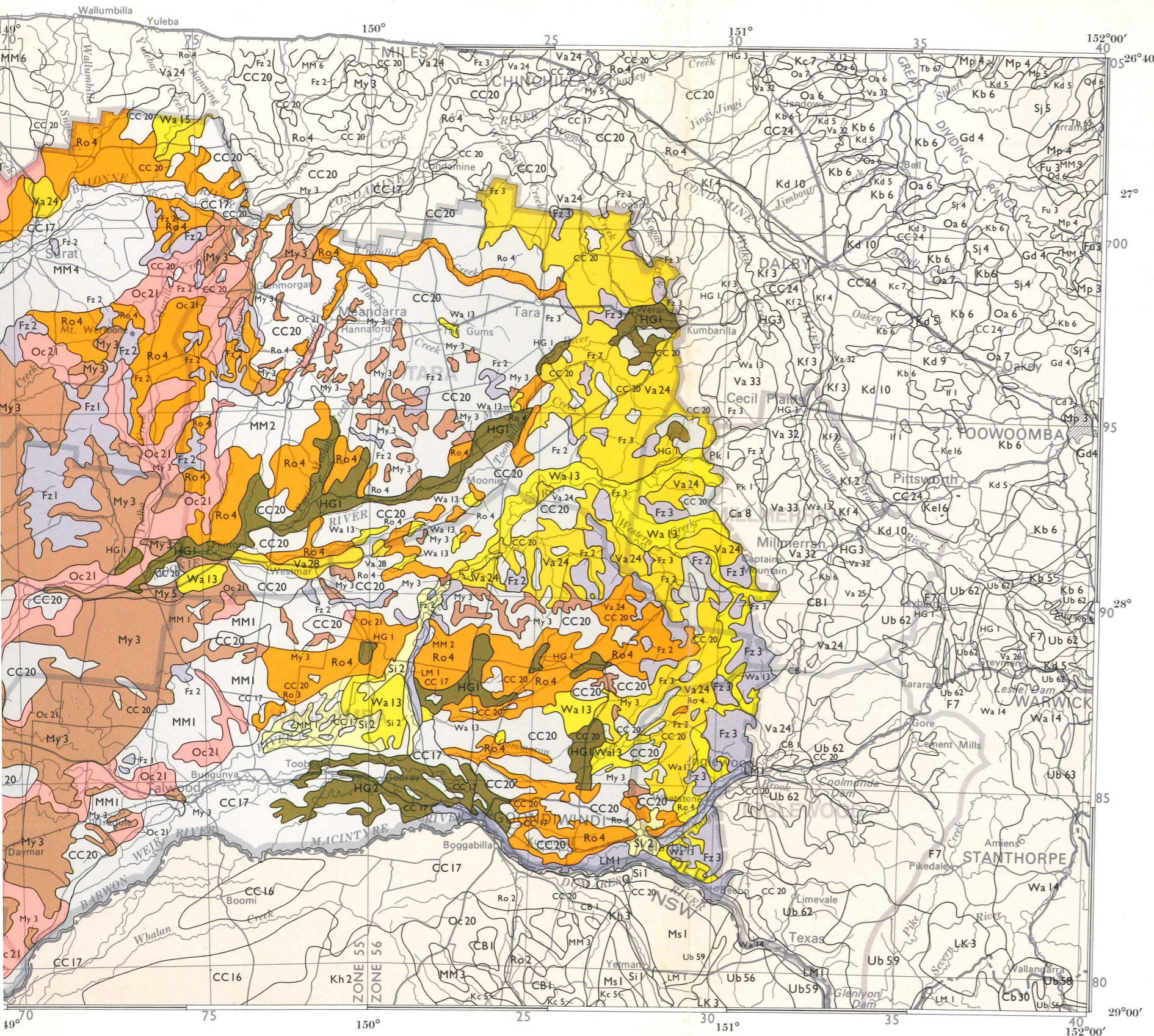




# CONDAMINE-MARANOVA BASIN EVALUATION OF RESOURCES

## SOUTHERN QUEENSLAND

### SOIL ASSOCIATIONS



**LEGEND - DOMINANT SOILS**

**I. SOILS WITH UNIFORM TEXTURE PROFILES (U)**

- SAND SOILS OF MINIMAL DEVELOPMENT (Uc1)  
B 10, 12 Siliceous Sands (Uc1.2)
- SAND SOILS WITH WEAK HORIZON FORMATION (Uc5)  
AB 2 Sands with an earthy fabric (Uc5.2)
- LOAMY SOILS OF MINIMAL DEVELOPMENT (Um1)  
Fz 1-3, 7 Coherent and shallow loamy soils (Um1.4)
- LOAMY SOILS HAVING AN A<sub>2</sub> HORIZON (Um4)  
LM1 Porous peds evident in B horizon (Um4.3)
- THE CRACKING CLAYS (Ug5)  
Grey, self-mulching (Ug5.2)  
CC 17, 19, 20 Deep (Ug5.24 and .25)  
Brown, self-mulching (Ug5.3)  
MM 1-2, 4 Various (Ug5.32, .33, .34, and .37)

**II. SOILS WITH GRADATIONAL TEXTURE PROFILES (G)**

- RED EARTHS (Gn2.1)  
(No A<sub>2</sub> horizon present)  
My 1-5 Neutral reaction trend (Gn2.12)
- GREY EARTHS (Gn2.8)  
Mq 1-2 Alkaline reaction trend (Gn2.83)

**III. SOILS WITH CONTRASTING (DUPLEX) TEXTURE PROFILES (D)**

- HARD SETTING LOAMY SOILS WITH RED CLAYEY SUBSOILS (Dr2)  
(Alkaline reaction trend-whole coloured subsoils)  
Oc 21 Sporadically bleached A<sub>2</sub> horizon : pedal subsoils (Dr2.33)
- HARD SETTING LOAMY SOILS WITH BROWN CLAYEY SUBSOILS (Db1)  
(Neutral reaction trend)  
Rt 1 Sporadically bleached A<sub>2</sub> horizon (Db1.32)  
(Alkaline reaction trend-whole coloured subsoils)  
Ro 3-4 Sporadically bleached A<sub>2</sub> horizon (Db1.33)
- FRIABLE LOAMY SOILS WITH BROWN CLAYEY SUBSOILS (Db3)  
(Neutral reaction trend)  
Rz 1 Sporadically bleached A<sub>2</sub> horizon (Db3.32)
- HARD SETTING LOAMY SOILS WITH YELLOW CLAYEY SUBSOILS (Dy2)  
(Alkaline reaction trend)  
Si 2 Sporadically bleached A<sub>2</sub> horizon (Dy2.33)  
Si 2 Bleached A<sub>2</sub> horizon (Dy2.43)
- HARD SETTING LOAMY SOILS WITH MOTTLED YELLOW CLAYEY SUBSOILS (Dy3)  
(Alkaline reaction trend)  
Va 24, 28 Bleached A<sub>2</sub> horizon (Dy3.43)
- SANDY SOILS WITH MOTTLED YELLOW CLAYEY SUBSOILS (Dy5)  
(Acid reaction trend)  
Wa 13, 15 Bleached A<sub>2</sub> horizon : pedal subsoils (Dy5.41)
- HARD SETTING LOAMY SOILS WITH DARK CLAYEY SUBSOILS (Dd1)  
(Alkaline reaction trend)  
HG 1-2 Sporadically bleached A<sub>2</sub> horizon (Dd1.33)

**IMPORTANT NOTES**

1. This map is extracted from the Atlas of Australian Soils; Sheet 3 (Northcote 1966) and Sheet 4 (Isbell et al. 1967).
2. Mapping units are ASSOCIATIONS OF SOILS and are delineated by landscapes; the unit boundaries have been reproduced directly, although the colour scheme has been modified.
3. Only the dominant soils are set out in Legend No. 1 of the Atlas of Australian Soils, the relevant parts of which are reproduced here. Explanatory data for Sheets 3 and 4 are contained in separate booklets as Legend No. 2.

4. The text of the C.O.M.B.E.R. report contains further information on the relevant soil associations.

5. The key notation for soil groups such as (Ug 5.25), (Gn 2.12) etc. comes from "A Factual Key for the Recognition of Australian Soils" (Northcote 1960).

6. Data for this map are classified as order 3 or better according to the scale of Reliability of Source published on Sheets 3 and 4 of the Atlas of Australian Soils.

COMPILED by E.J. Weston (Agriculture Branch), C.N. Nason (Economic Services Branch) and R.D.H. Armstrong (Sheep and Wool Branch), Queensland Department of Primary Industries, Brisbane.

PREPARED by the Division of Land Utilisation, Queensland Department of Primary Industries, Brisbane.

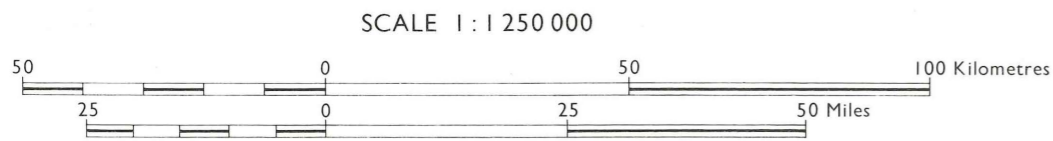
CARTOGRAPHIC BASE compiled from the Brisbane - Charleville - Bourke - Armidale 1 : 1 000 000 International Map of the World using selected topographic information plotted onto the Australian Map Grid.

COLOUR SEPARATION of Dominant Soils by the Lithographic Section, Survey Office, Department of Lands, Brisbane.

PRINTED by S.G. Reid, Government Printer, Brisbane. SEPTEMBER 1974







UNIVERSE TRANSVERSE MERCATOR PROJECTION  
 50 000 metre Australian Map Grid, Zones 55 & 56  
 (Grid values are shown in full at the south west corner of the map.)

CARTOGRAPHY BY A.L. CHANDICA

LOCATION MAP



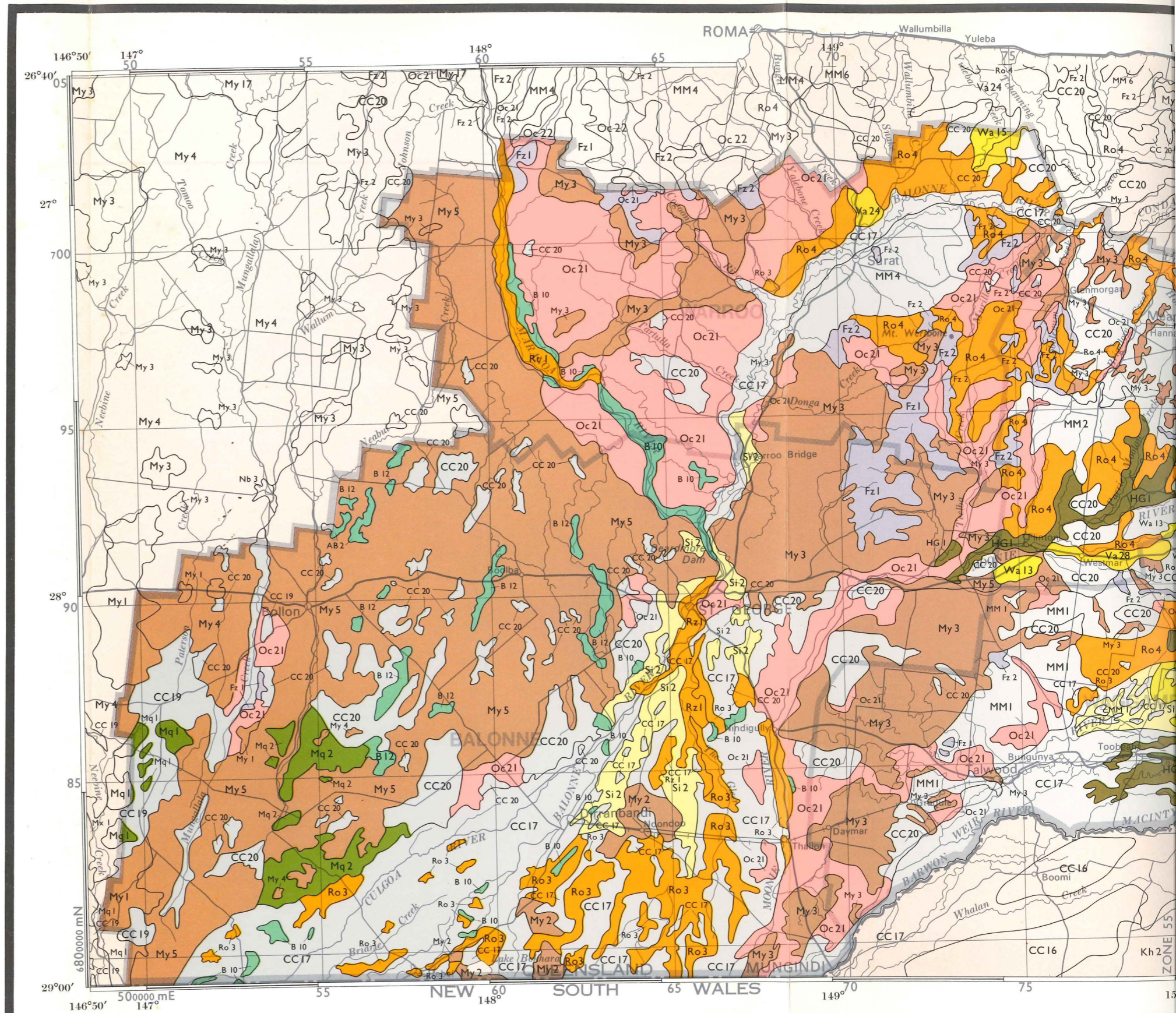
LEGEND

- Highway, Principal Town
- Main road, Town
- Secondary road; Minor town or settlement
- Railway
- River or stream
- Dam; Lake
- Local authority boundary
- Limit of evaluation area
- State boundary

KEY TO 1 : 250 000 AREAS

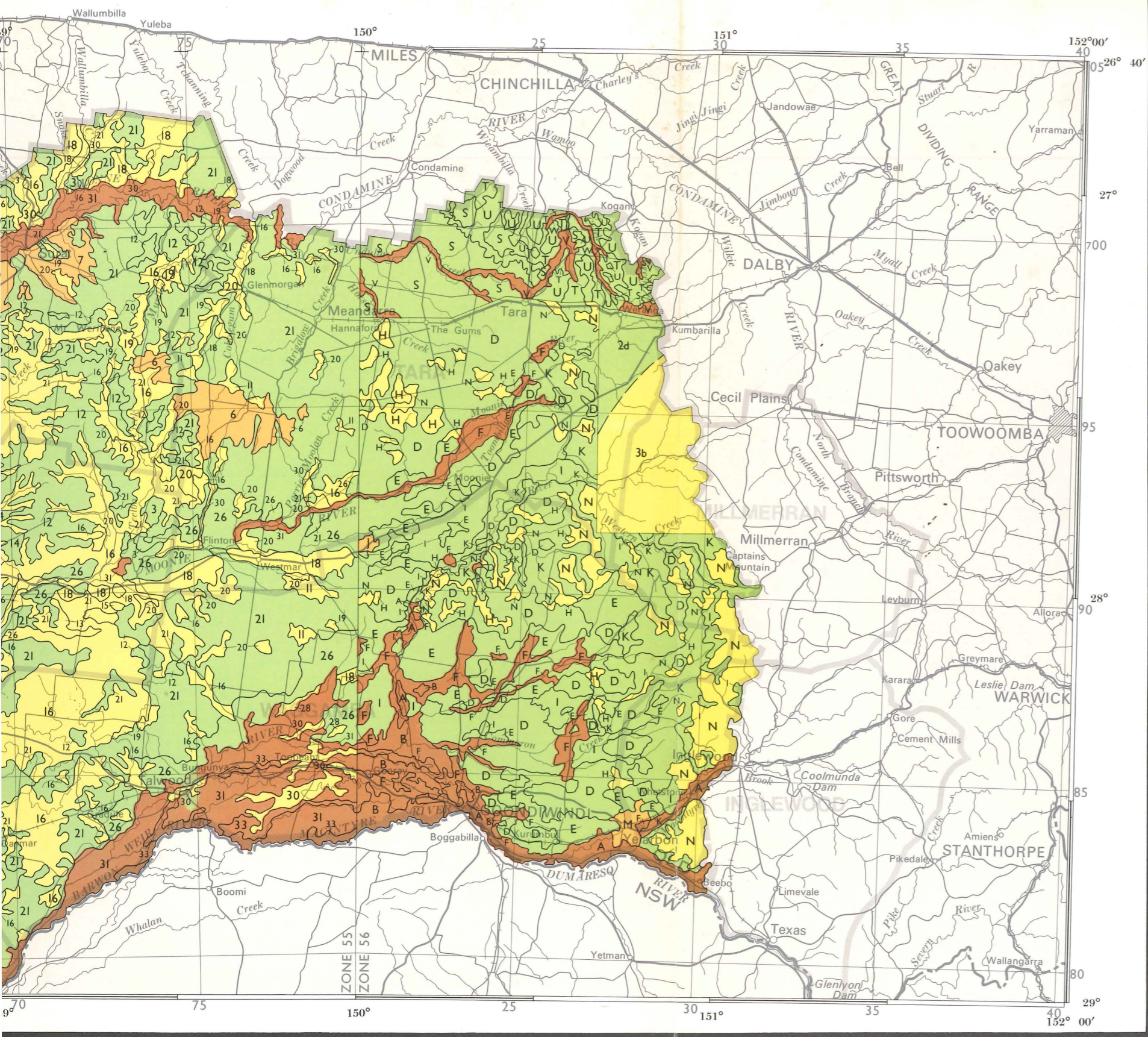
ADAVALE	AUGA- THELLA	EDDY- STONE	TAROOM	MUN- DUBBERA	MARY- BOROUGH	WIDE BAY
QUILPIE	CHARLE- VILLE	MITCHELL	ROMA	CHIN- CHILLA	GYMPIE	
TOOMPINE	WYANDRAPHOMEBOIN	SURAT	DALBY	IPSWICH	BRISBANE	
EULO	CUNNA- MULLA	DIRRAM- BANDI	ST GEORGE	GOONDI- WINDI	WARWICK	TWEED HEADS
YANTA- BULLA	ENNGONIA	ANGLE- DOL	MOREE	INVERELL	GRAFTON	MACLEAN

NOTE. The grid reference obtained for any point on this map can be used to locate that same point on any other map of this area showing the Australian Map Grid e.g. Topographic maps (metric) recently published by Division of National Mapping, Canberra or Survey Office, Department of Lands, Brisbane.





QUEENSLAND  
DEPARTMENT OF PRIMARY INDUSTRIES  
**CONDAMINE-MARANOA BASIN EVALUATION OF RESOURCES**  
**SOUTHERN QUEENSLAND**  
**COMPOSITE of VEGETATION**



**LEGEND - VEGETATION**

This information was extracted from the Land Systems map of 'Lands of the Balonne - Maranoa Area, Queensland'. (Galloway et al. in press 1974)

LAND SYSTEM	PROMINENT VEGETATION
1,2,4,5,8,9,10.	Not represented in Condamine-Maranoa Region
3	Cypress pine open forest
6	Open woodland of mountain coolibah and grassland
7	Grassland.
11	Narrow-leaved ironbark with shrubs
12	Bendee forest
13	Woodland of poplar box, ironbark and mulga with Queensland peppermint
14	Mulga open forest
15	Poplar box woodland with mulga
16	Poplar box woodland usually with few shrubs
17	Silver-leaved ironbark and poplar box woodland
18	Bull oak and poplar box woodland
19	Yapunya woodland
20	Poplar box and brigalow woodland
21	Belah or brigalow open forest
22	Woodland of poplar box, ironbark and apple with cypress pine
23	Woodland of poplar box, ironbark and tumbledown gum with mulga
24	Mulga open forest with emergent eucalypts
25	Brigalow, poplar box and mulga woodland
26	Belah or brigalow open forest
27	Gidgee open forest
28	Silver-leaved ironbark or poplar box woodland with cypress pine
29	Poplar box woodland with mulga
30	Poplar box woodland with some belah
31	Coolibah open woodland and grassland
32	Black box open woodland and grassland
33	Coolibah open woodland with flood-tolerant shrubs

This information was extracted from the Vegetation of Australia map of 'Australian Grasslands'. (Moore and Perry, 1970)

**VEGETATION**

- 2d Brigalow forests
- 3b Semi-arid shrub woodlands

FOREST, OPEN FOREST	WOODLAND
OPEN WOODLAND, GRASSLAND	FRINGING COMMUNITIES

This information was extracted from the Soil Association map of 'The Soils of the Inglewood - Talwood - Tara - Glenmorgan Region'. (Isbell 1957)

**VEGETATION**

A	Woodland with poplar box and silver-leaved ironbark
B	Coolibah and myall parkland with extensive curly Mitchell and blue grass areas
C	Parkland with blue grass and scattered poplar box, silver-leaved ironbark and coolibah
D	Dense forest of brigalow with belah, wilga and sandalwood
E	Dense forest of belah with lesser wilga, brigalow and sandalwood
F	Woodland of poplar box and sandalwood with some wilga
G	Woodland of sandalwood and poplar box with some belah, wilga, and limebush
H	Woodland of silver-leaved and narrow-leaved ironbark and poplar box
I	Cypress pine forest, usually with much bull oak and lesser rusty gum and narrow-leaved ironbark
J	Woodland of silver-leaved ironbark, poplar box and cypress pine
K	Bull oak forest with cypress pine, poplar box and narrow-leaved ironbark often prominent
L	Open forest of narrow-leaved ironbark, mallee and poplar box with bull oak often prominent
M	Tea-tree-spinifex community with stunted sandalwood, bull oak and mallee box
N	Open forest of silver and narrow-leaved ironbark, poplar box and ironwood. Occasionally wattle.
O	Open forest of tumbledown gum, cypress pine, narrow-leaved and silver-leaved ironbark

This information was extracted from the Vegetation map of 'Land Inventory and Technical Guide, Miles Area, Queensland'. (Dawson 1972b)

**IMPORTANT VEGETATION COMMUNITIES**

S	Brigalow - belah forests
T	Ironbark - bull oak - cypress pine layered open forest
U	Ironbark - wattle layered open forest
V	Poplar box layered and shrubby woodlands
W	Angophora - cypress pine - poplar box - Queensland blue gum - tumbledown gum woodland

COMPILED by E.J. Weston (Agriculture Branch), C.N. Nason (Economic Services Branch) and R.D.H. Armstrong (Sheep and Wool Branch), Queensland Department of Primary Industries, Brisbane.

PREPARED by the Division of Land Utilisation, Queensland Department of Primary Industries, Brisbane.

CARTOGRAPHIC BASE compiled from the Brisbane - Charleville - Bourke - Amidale 1 : 1 000 000 International Map of the World using selected topographic information plotted onto the Australian Map Grid.

COLOUR SEPARATION of Structural Forms by the Lithographic Section, Survey Office, Department of Lands, Brisbane.

PRINTED by S.G. Reid, Government Printer, Brisbane, SEPTEMBER 1974

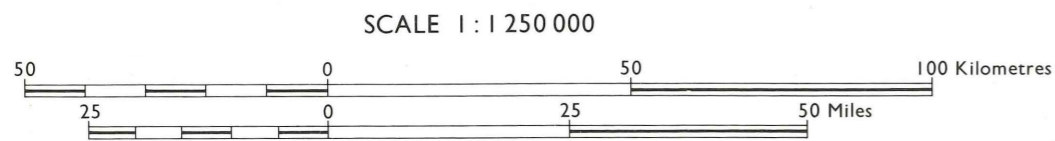
**NOTES.**

a) The vegetation boundaries were derived from the publications shown in the legend and have been revised to conform with a mapping scale of 1:1 250 000. Symbols and colour schemes have been modified.

b) Where detailed descriptions of vegetation overlap, preference has been given to the most recent publication.







UNIVERSE TRANSVERSE MERCATOR PROJECTION  
50 000 metre Australian Map Grid, Zones 55 & 56  
(Grid values are shown in full at the south west corner of the map.)

CARTOGRAPHY BY A.L. CHANDICA

LOCATION MAP



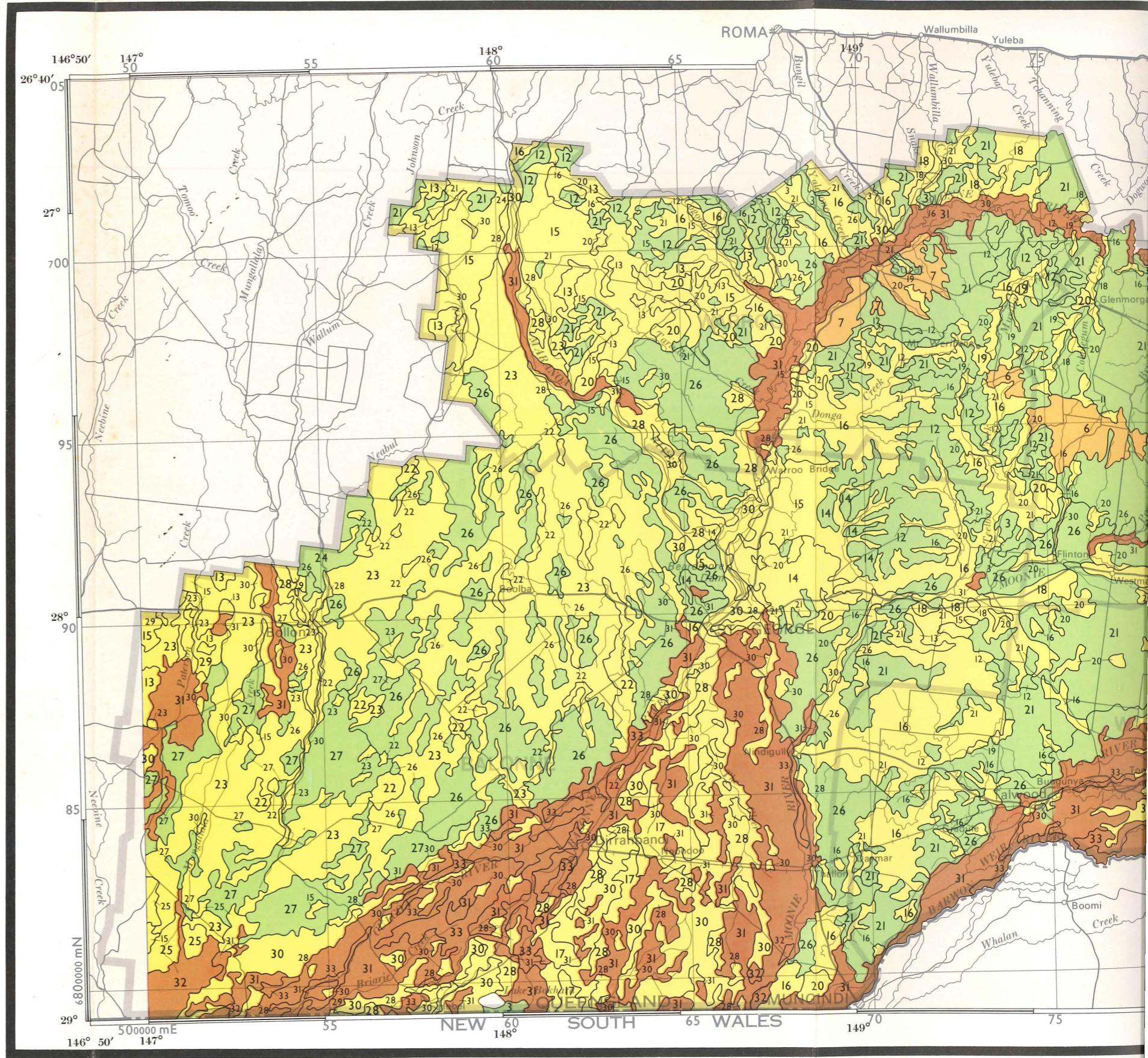
LEGEND

- Highway; Principal Town
- Main road; Town
- Secondary road; Minor town or settlement
- Railway
- River or stream
- Dam; Lake
- Local authority boundary
- Limit of evaluation area
- State boundary

KEY TO 1 : 250 000 AREAS

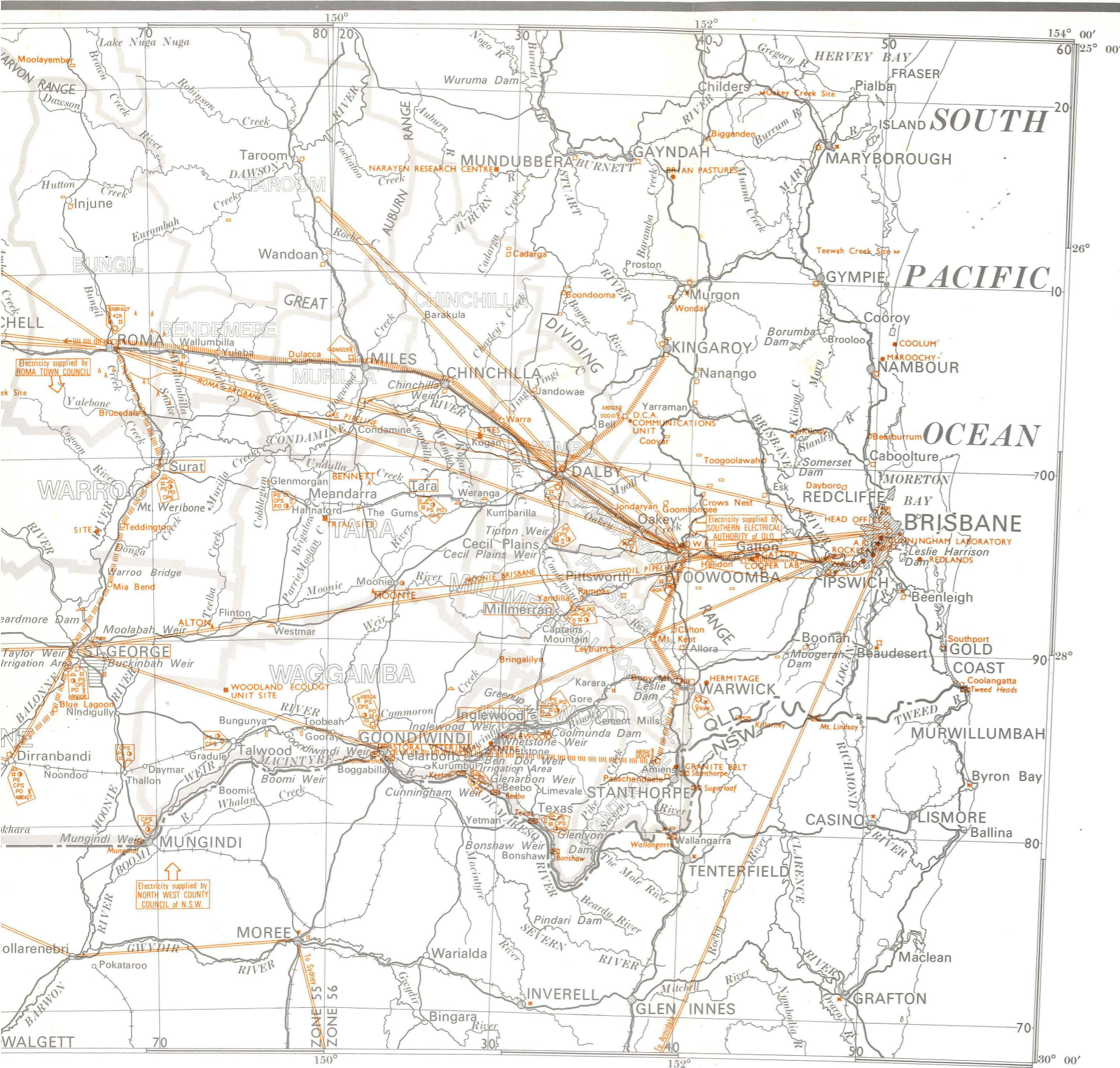
ADAVALE	AUGA- THELLA	EDDY- STONE	TAROOM	MUN- DUBBERA	MARY- BOROUGH	MARY- WIDE BAY
QUILPIE	CHARLE- VILLE	MITCHELL	ROMA	CHIN- CHILLA	GYMPIE	
TOOMPINE	WYANDRACH	HOMEBOIN	SURAT	DALBY	IPSWICH	BRISBANE
EULO	CUNNA- MULLA	DIRRAN- BANDI	ST. GEORGE	GOONDI- WINDI	WARWICK	TWEED HEADS
YANTA- BULLA	ENNGONIA	ANGLE- DOL	MOREE	INVERELL	GRAFTON	MACLEAN

NOTE. The grid reference obtained for any point on this map can be used to locate that same point on any other map of this area showing the Australian Map Grid e.g. topographic maps (metric) recently published by Division of National Mapping, Canberra or Survey Office, Department of Lands, Brisbane.





QUEENSLAND  
DEPARTMENT OF PRIMARY INDUSTRIES  
**CONDAMINE-MARANOVA BASIN EVALUATION OF RESOURCES**  
SOUTHERN QUEENSLAND  
**SERVICES and FACILITIES**



**LEGEND - SERVICES & FACILITIES**

- \* Shire centre Tara
- \* Police station PS
- \* Magistrate's court CPS
- \* Post office (official) PO
- \* Cotton gin G
- \* Wheat silo S
- \* Timber mill M
- Dip (clearing and border) □
- Meatworks (licensed export) \*
- Livestock selling yards #
- D.P.I. office (1-4 officers) □
- D.P.I. office (5-11 officers) □
- D.P.I. office (12+ officers) □
- D.P.I. research facility ●
- Relevant C.S.I.R.O. research facility ■
- \* University of Queensland research facility □
- Representative basin site \*
- Radio transmitter □
- Television transmitter/translator □
- Microwave repeater □
- Broadband microwave system |||||
- Television link |||||
- Major border crossing □
- \* Aerodrome ○
- Air route —
- \* Oil field (producing) A
- Gas field (connected to a pipeline) A
- Oil or gas pipeline —
- \* Recreational facility ▲

**NOTE:** Information presented on this map was obtained from the following sources:— Queensland Department of Primary Industries (dips, meat works, livestock selling yards, Queensland Department of Primary Industries offices and research facilities and major border crossings), Australian Postmaster-General's Department (official post offices, radio transmitters, television transmitters and translators, microwave repeaters, the broad band microwave system and television links), Australian Department of Transport, Air Transport Group (aerodromes and air routes), C.S.I.R.O. (relevant research facilities), Queensland Department of Mines (producing oil fields, connected gas fields and oil and gas pipelines), Irrigation and Water Supply Commission (representative basin sites), Queensland Department of Justice (Magistrate's courts), Queensland Police Department (police stations), Queensland Department of Forestry (timber mills) and State Wheat Board (wheat silos).

COMPILED by E.J. Weston (Agriculture Branch), C.N. Nason (Economic Services Branch) and R.D.H. Armstrong (Sheep and Wool Branch), Queensland Department of Primary Industries, Brisbane.

PREPARED by the Division of Land Utilisation, Queensland Department of Primary Industries, Brisbane.

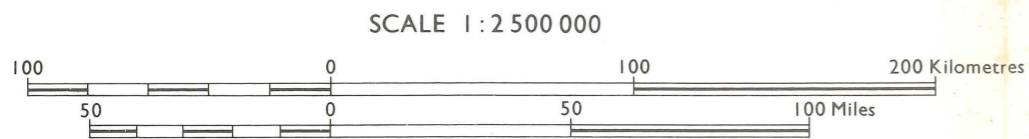
CARTOGRAPHIC BASE compiled from the Brisbane - Charleville - Bourke - Armidale 1 : 1,000,000 International Map of the World using selected topographic information plotted onto the Australian Map Grid.

PRINTED by S.G. Reid, Government Printer, Brisbane. SEPTEMBER 1974

\* These services and facilities are shown for the Condamine-Maranoa basin evaluation area only.







UNIVERSE TRANSVERSE MERCATOR PROJECTION  
100 000 metre Australian Map Grid, Zones 55 & 56  
(Grid values are shown in full at the south west corner of the map)

CARTOGRAPHY BY A.L. CHANDICA

LOCATION MAP



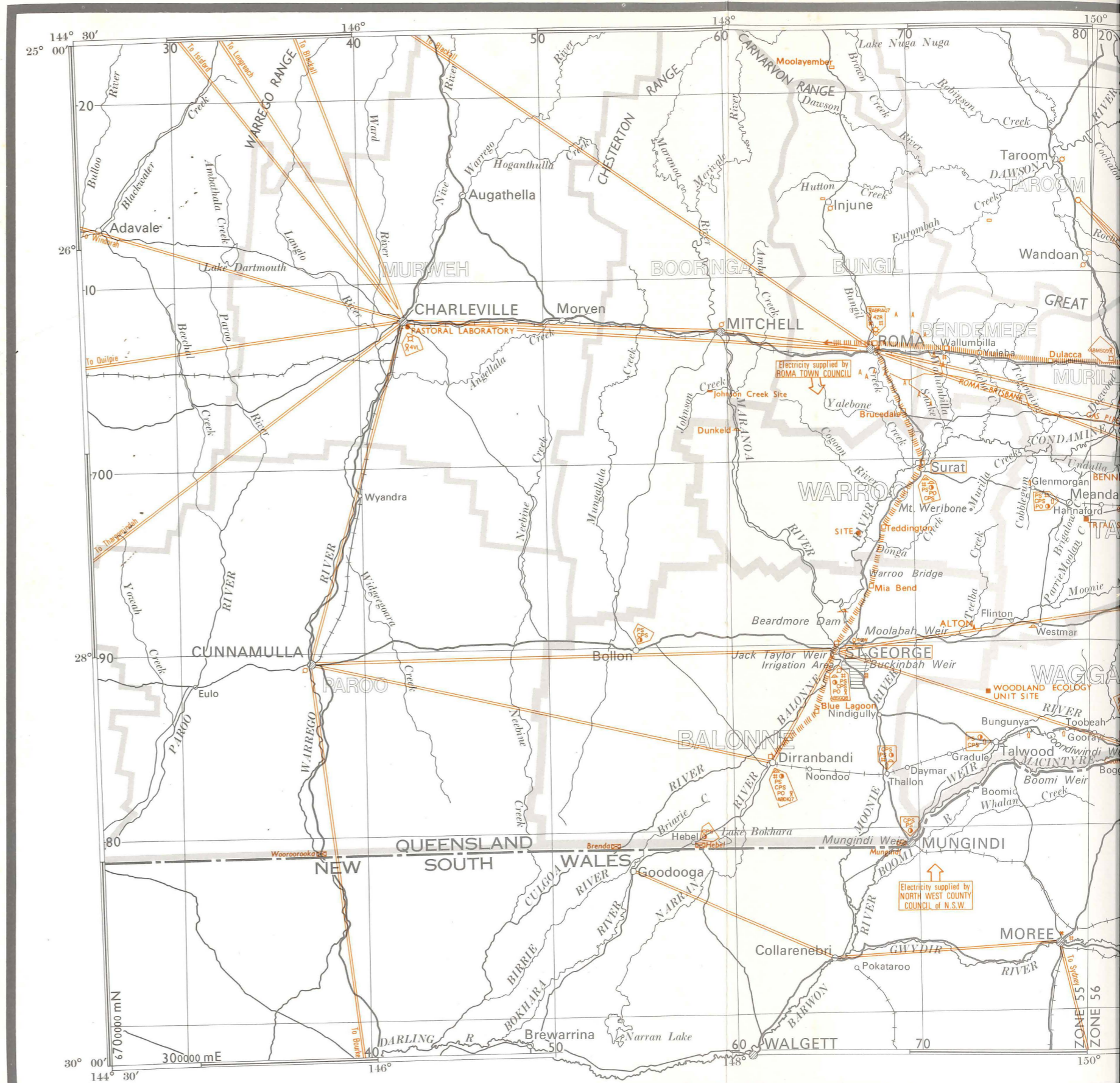
LEGEND

- Highway; Principal town
- Main road; Town
- Secondary road; Minor town or settlement
- Railway
- River or stream
- Dam; Weir; Lake
- Local authority boundary within evaluation area; outside evaluation area
- Eastern limit of evaluation area
- State boundary

KEY TO 1 : 250 000 AREAS

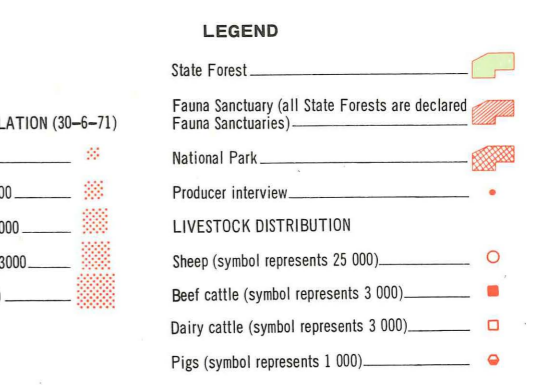
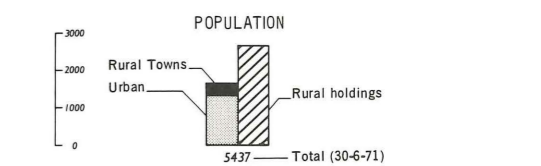
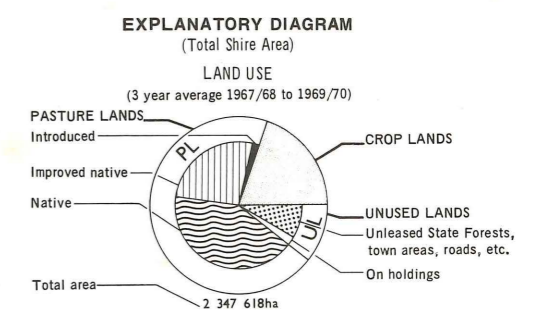
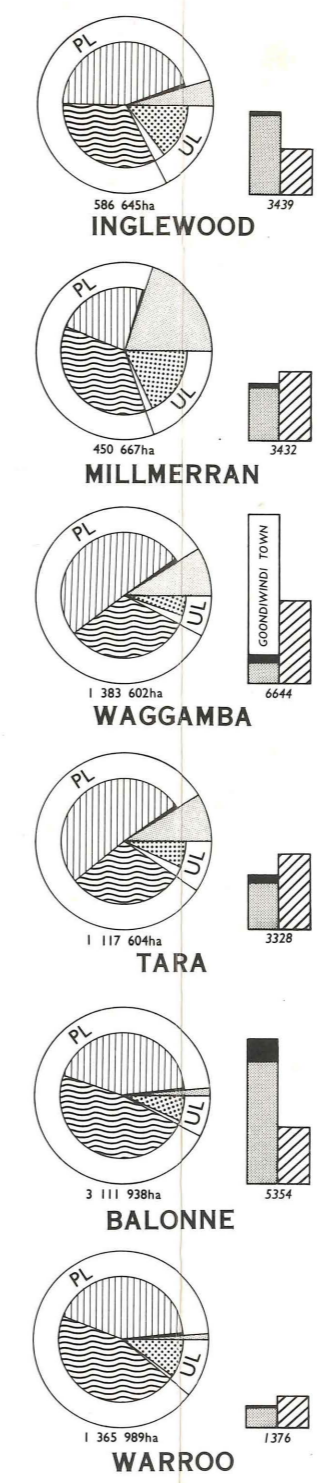
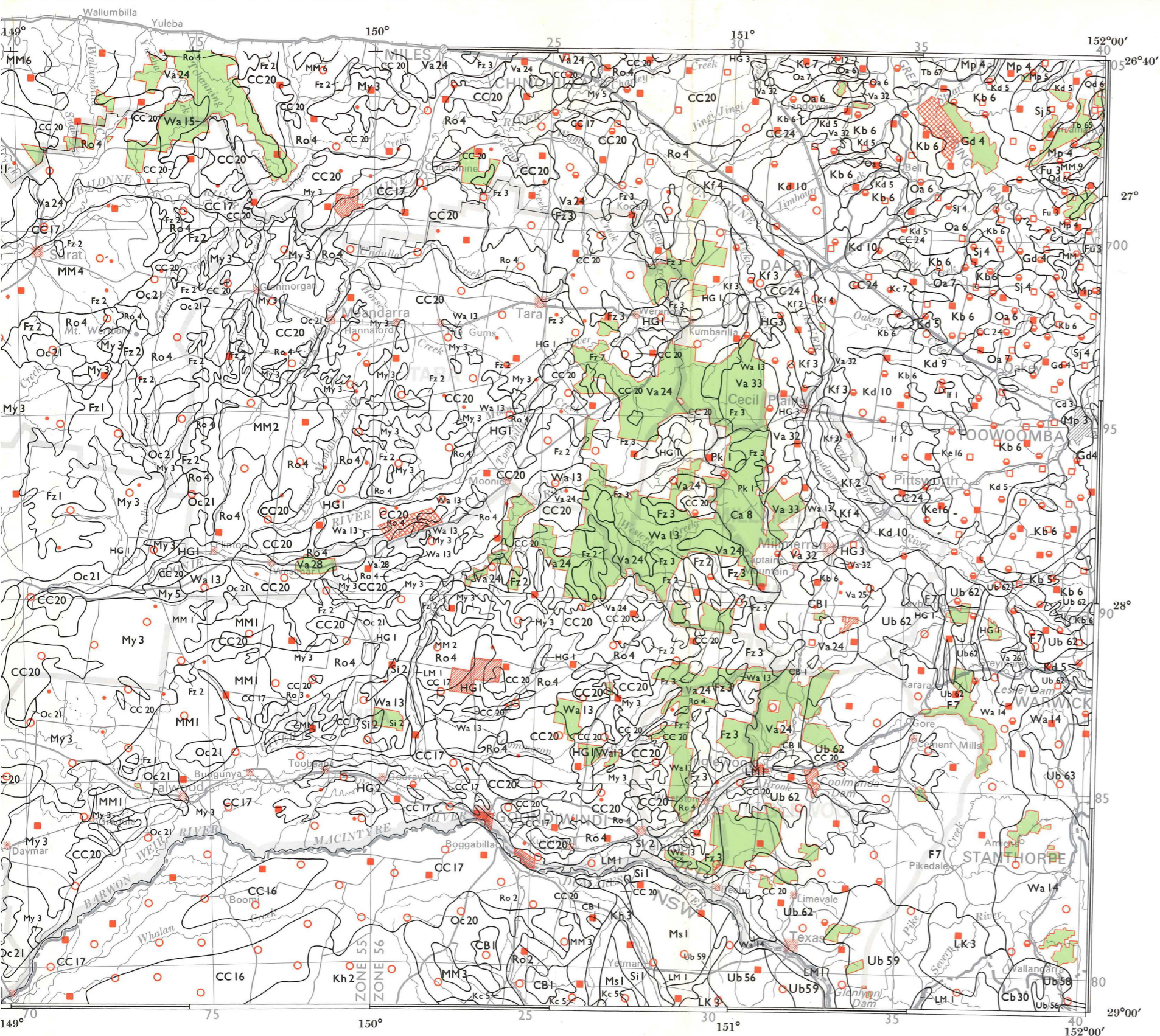
ADAVALE	AUGA- THELLA	EDDY- STONE	TAROOM	MUN- DUBBERA	MARY- BOROUGH	WIDE BAY
QUILPIE	CHARLE- VILLE	MITCHELL	ROMA	CHIN- CHILLA	GYMPIE	
TOOMPIN	WYANDRA	HOMEBOIN	SURAT	DALBY	IPSWICH	BRISBANE
EULO	CUNNA- MULLA	DIRRAN- BANDI	ST. GEORGE	GOONDI- WINDI	WARWICK	TWEED HEADS
YANTABULLA	ENNGONIA	ANGLE- DOL	MOREE	INVERELL	GRAFTON	MACLEAN

NOTE. The grid reference obtained for any point on this map can be used to locate that same point on any other map of this area showing the Australian Map Grid e.g. topographic maps (metric) recently published by Division of National Mapping, Canberra or Survey Office, Department of Lands, Brisbane.





# CONDAMINE-MARANOA BASIN EVALUATION OF RESOURCES SOUTHERN QUEENSLAND MISCELLANEOUS INFORMATION



**NOTE:** Information presented on this map was obtained from the following sources— The Australian Bureau of Statistics (population, crop, pasture and pig statistics), Atlas of Australian Resources of the Geographic Section of the Department of National Development, now Department of Minerals and Energy (sheep and cattle statistics), and the Queensland Department of Forestry (State Forest and National Park areas).

COMPILED by E.J. Weston (Agriculture Branch), C.N. Nason (Economic Services Branch) and R.D.H. Armstrong (Sheep and Wool Branch), Queensland Department of Primary Industries, Brisbane.

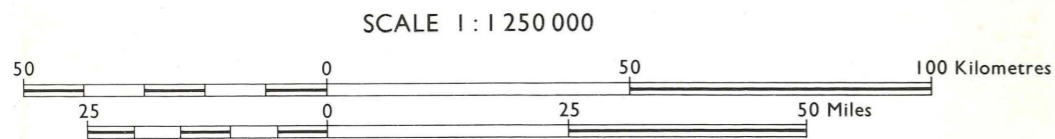
PREPARED by the Division of Land Utilisation, Queensland Department of Primary Industries, Brisbane.

CARTOGRAPHIC BASE compiled from the Brisbane - Charleville - Bourke - Armidale 1 : 1 000 000 International Map of the World using selected topographic information plotted onto the Australian Map Grid.

PRINTED by S.G. Reid, Government Printer, Brisbane. SEPTEMBER 1974

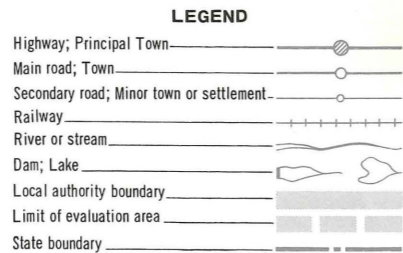






UNIVERSE TRANSVERSE MERCATOR PROJECTION  
50 000 metre Australian Map Grid, Zones 55 & 56  
(Grid values are shown in full at the south west corner of the map.)

CARTOGRAPHY BY A.L. CHANDICA



KEY TO 1 : 250 000 AREAS

ADAVALE	AUGATHIELLA	EDDYSTONE	TAROOM	MUNDUBBERA	MARYBOROUGH	WIDE BAY
QUILPIE	CHARLEVILLE	MITCHELL	ROMA	CHINCHILLA	GYMPIE	
TOOMPINE	WYANDRHOPE	BOHAIN	SURAT	DALBY	IPSWICH	BRISBANE
EULO	CUNNAMULLA	DIRRANBANDI	ST. GEORGE	GOONDIWINDI	WARWICK	TWEED HEADS
YANTABULLA	ENNGONIA	ANGLEDOL	MOREE	INVERELL	GRAFTON	MACLEAN

NOTE. The grid reference obtained for any point on this map can be used to locate that same point on any other map of this area showing the Australian Map Grid e.g. topographic maps (metric) recently published by Division of National Mapping, Canberra or Survey Office, Department of Lands, Brisbane.

