

FINAL REPORT
OF THE
STONEFRUIT CULTIVAR
DATABASE

HDRC Project FR97512
(JUNE 1998)

DOUGAL RUSSELL AND BRUCE TOPP
QUEENSLAND DEPARTMENT OF PRIMARY INDUSTRIES

<1999>



TABLE OF CONTENTS

HDRC Project FR97512	3
Purpose of this report.....	3
Funding Source.....	3
Disclaimer.....	3
INDUSTRY SUMMARY.....	4
TECHNICAL SUMMARY	5
INTRODUCTION	6
MATERIALS AND METHODS.....	6
Information Sources.....	6
Variety Photos	7
Presentation of Information	7
CD Production	8
Searching for Information	8
RESULTS AND DISCUSSION	10
Discussion.....	10
Further Research.....	11
APPENDIX 1. Cultivars used as Fruit Ripening Standards	12
Redhaven Peach.....	12
Santa Rosa Plum.....	12
Trevatt Apricot.....	13
Bing Sweet Cherry.....	13
APPENDIX 2. Stonefruit Cultivars	14
Peaches	14
Plums	18
Apricots	21
Cherries.....	22
Nectarines	24
Plumcots	26
Rootstocks	26
APPENDIX 3. Conferences, Displays, Presentations, Extension Articles and Newspapers.....	28
Conference Papers	28
Displays	28
Presentations.....	28
Extension Articles.....	28
Newspaper Distribution List.....	29
LITERATURE CITED	30

HDRC Project FR97512

Dougal Russell
 Senior Experimentalist
 Queensland Horticulture Institute
 Applethorpe Research Station
 PO Box 501 Stanthorpe
 Queensland 4380
 Ph 07 46 811255
 Fax 07 46 811769
 Email russeldm@dpi.qld.gov.au

Purpose of this report.

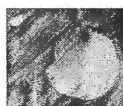
This report details the process we used to produce a computer based information package on stonefruit varieties for the Australian stonefruit industry. It outlines why the industry acknowledged the need for such a package, the range of information required, the source of that information, and how that information was presented. Also enclosed is a copy of the finished database and relevant literature generated from the project.

Funding Source

Voluntary Contributors	Levy Contributors
Australian Cherry Exports	Horticultural Research and Development Corporation
Balhannah Nurseries	Australian Fresh Stonefruit Growers Association
Batlow Fruit Co-operative	Queensland Fruit and Vegetables
Birdwood Nursery	
C.J. Goodman PTY LTD	
Linmer Nurseries	
Mossmount Nursery	
Mount Regent Nurseries	
Mount View Nursery	
Olea Nursery	
W.A. Shepherd and Sons	
W.A Summer Fruits Council	
Suncentre Horticultural Development Association	
Tabarag Nursery	

Disclaimer

Any recommendations contained in this publication do not necessarily represent current HRDC policy. No person should act on the basis of the contents of this publication, whether as to matters of fact or opinion or other content, without first obtaining specific, independent professional advice in respect of the matters set out in this publication.



INDUSTRY SUMMARY

There are many stonefruit varieties in the market place. As quickly as an older variety becomes obsolete in the nursery catalogue it could be replaced by four new ones. These new varieties can have outstanding qualities that leave the older varieties in their wake, however with the range of varieties so large it is very difficult for the grower, nursery operator or researcher to keep up with what's available. For a grower, this is a pivotal decision for their orchard for the next 5-10 years. If the new variety does not fulfil their expectation, time and money are lost. The cost of patented trees when establishing a new orchard will be \$10,000 - \$15,000/ha (figures based on \$10/tree and 1,000-1,500 trees/ha). The dollar value of lost time and production can be many times this so it is important to make the right decision.

Nurseries are obviously the first port of call in the search for new varieties. They have up to date information on the varieties they sell, but only those varieties from the particular breeding programs to which they are aligned. Often there are many other patented and public domain varieties in the market place that are never compared.

So to keep up with the changing face of domestic and overseas markets and the varieties needed to meet those markets how does a grower know what to plant? The **STONEFRUIT CULTIVAR SYSTEM** is a user-friendly database that can aid in that decision making process. This computer program of peaches, plums, nectarines, apricots, cherries and rootstocks has been specifically designed to cater for the information needs of growers, nurseries and researchers. It offers information on varieties released world wide in a form that requires little knowledge in the use of a computer and few typing skills. In fact a user need not type anything as the program has been designed for use in the Windows™ environment.

The Stonefruit Cultivar System is a "stand alone" program (ie. needs no other software package to make it run), containing a series of database files that have been incorporated into an authoring program called HyperWriter. HyperWriter relies on using hypertext where an operator moves through a program using a series of links. These links enable the user to travel around topics within the program (the individual data pages) and around files. This database is made up of eight files that can be accessed quite easily from any position in the program. Each file is a self-contained database and access program for a crop. The seven crops described are Peaches, Nectarines, Plums, Apricots, Cherries, Plumcots and Rootstocks. To date more than 2,500 cultivars, over 1000 of these having an attached photo, and 100 rootstocks are described.

This program has been designed to be very user friendly and has facility for file and global searches in the database for the more adventurous. It has brought together a large amount of information from books, catalogues, variety release notices, scientific journals and trade magazines on new and old varieties in a form that is easy to use.

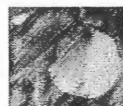
Key Points

- More than 2500 full page descriptions and over 1000 photos
- 160 Mb of information and photos
- User friendly
- Cost: Version 2.0 (CD ROM) - \$120 and Version 1.6 (floppy disk) - \$100.
Outside Australia – Version 2.0 A\$250 and Version 1.6 A\$200.

Key Industry Issues

- Caters for the lack of a common source for varietal information throughout the industry.
- Resource for decision making.
- Important Technology transfer.

It is anticipated that every 2 years the Stonefruit Cultivar System will be updated with new stonefruit variety releases from around the world.



TECHNICAL SUMMARY

There are hundreds of stonefruit varieties available to industry with scattered and non-standardised information to make informed decisions on which one to plant. There needed to be a simple, yet comprehensive, method of obtaining information on the new and significant cultivars released around the world. Computing would prove to be the best medium to provide that information. A CD ROM database of stonefruit cultivars produced around the world needed to be developed to fill that information shortfall.

Information was collated from a range of literature, existing computer software and the Internet, into a database then refaced into a user-friendly, hypertext, computer program. "The Stonefruit Cultivar System" uses a series buttons to activate pre-programmed cultivar lists. Clicking on the cultivar name activates a link to a full-page description with colour photo. Cultivar pages contain information on fruit characters, tree characters, disease resistance/susceptibility, origin and references. The principal methods of searching are Alphabetical, by Chill Requirement, by Maturity and by a range of other searches such as flesh type and colour, disease resistance and species type. There is also a facility for a general name search. Over 2500 cultivars are described with more than 1000 of those including a photo or drawing. Information on prunus history, disease identification and a full bibliography are also included.

Although similar to "Peaches and Nectarines", (Okie, 1993), a computer program that describes peach and nectarine performance in South East USA, our program builds upon much of that information and incorporates varieties of Plums, Apricots, Cherries and Rootstocks. Plus it has the addition of many photos, drawings and plates to accentuate varietal description.

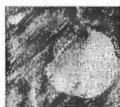
The program has 160Mb of information and pictures. It requires about 10 Mb of disk space, 24 or 32 bit true colour and runs at 640x480 and 800 x 600 pixels. Each page can be printed (colour if desired) and if a substantial amount of printing is required then the 480 x 640 resolution is best.

Pricing

Version 2.0 (CD ROM)	A\$120 in Australia A\$250 outside Australia
----------------------	---

Version 1.6 (Floppy Disk)	A\$100 in Australia A\$200 outside Australia
---------------------------	---

Updates are planed for every 2 years depending on the release of new varieties and relevant information in the literature. It is also envisaged an internet site will be established to broaden the consumer base.



INTRODUCTION

Stonefruit variety introductions into Australia have steadily increased since the mid 1980's. Initially, most of the new introductions were the cultivars developed and grown in the United States and generally from government and university based programs. However, from the mid 80's Australian nurseries, with production agreements from private breeders, began importing patented varieties and selling them with an attached royalty payment.

There are vast amounts of information in the marketplace through the internet, computer programs, books, journals, fruit magazines and technical articles. With all this information there is little standardisation in description language and very little comparison between various sources. To make sense of all the available information there needed to be a simple method for comparing one variety against another. Only then could a grower or researcher be confident they made the best choice.

Today some frequently asked questions within the industry are:

- What variety can I harvest in my area in mid-January?
- What variety best suits me for the export market?
- Where can I find information on varieties with disease resistance?
- When does this variety ripen and what is its chilling requirement?

This project came about because of these industry concerns. Interest was gauged from these concerns with 14 voluntary contributors willing to support the project to gain answers to these basic questions.

MATERIALS AND METHODS

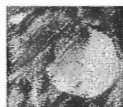
Information on stonefruit varieties and presentation of that information are the logical steps towards the development of a computer resource package. This section outlines the avenues of variety information available around the world and the method by which that information is presented to be user friendly.

Information Sources

There are many books and references that outline various aspects of variety performance. A range of these texts were obtained from overseas. "The Register of New Fruit and Nut Varieties" by Brooks and Olmo (1972 and 1997) are the standard reference texts for all fruit varieties since the 1950's. They describe nearly all cultivated fruit crops and are a popular listing for breeders to introduce their varieties to the scientific community. Before this however there was the classic Hedrick series of stonefruit history and variety listings. The "Plums of New York"(1911), "Peaches of New York"(1917) and "Cherries of New York"(1915) written in the early part of the 20th century, are still considered the classic texts for varietal history and identification to this day. Taylor's Plums of England (1949), Lioreti and Fiorio (1973) (nectarines) and Della Strada et. al. (1984) (peaches) are just three illustrated texts on cultivars that gave snapshot views of the varietal situation in Europe over the last 50 years.

Other sources of information have been overseas nursery catalogues detailing selected varieties from breeding programs they are aligned with; journals such as Fruit Varieties Journal, HortScience and Acta Horticulturæ; magazines such as American Fruit Grower, New Zealand Orchardist and Deciduous Fruit Grower; Fruit Descriptors from the International Board for Plant Genetic Resources; agricultural farmnotes and handouts and; local Departmental of Primary Industries evaluations and local district observations.

Electronic descriptions of varieties were limited to various web sites of nurseries and breeders around the world and a computer program of peach and nectarine descriptions. "Peach and Nectarine Varieties" by Dr Dick Okie (1993) of the USDA, Byron, Georgia, was released as a computer program that described 600 peach and nectarine cultivars tested in the south east United States. A master index gave general descriptions of over 5,000 varieties. An excellent text format version (Okie, 1998) has been subsequently published. To date this is the most comprehensive review of varietal information



world wide. However this information was limited to peaches and nectarines and contained no pictures of the varieties described.

Variety Photos

Over 600 varieties of peaches, plums, nectarines, apricots and cherries have been evaluated at the Applethorpe Research Station since 1980. Most of these varieties have been overseas introductions and generally public domain. Since the introduction of patented varieties from nursery aligned private breeding programs there has been fewer public variety introductions and evaluations carried out at the research station. One of the largest overseas sources of public material has been for the low chill industry from the University of Florida, Gainesville, Florida. This breeding program has now been aligned with the ANFIC group and consequently this material will be patented. Varieties from the Applethorpe Research Station, growers properties and the Brisbane produce markets have been photographed on a light stand using a standard EOS Cannon SLR camera and tripod with protocols developed for the project. All photos were scanned on both a flat-bed scanner and slide scanner to produce TIF files ready for incorporation into the final program.

Presentation of Information

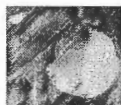
Although there are vast amounts of information available in reference material contributed by breeders and researchers, there is very little commonality in the descriptive language or topics for new variety descriptions. The key to varietal description is to have a comparison system where the variety is benchmarked against a standard or comparator variety. These standards (usually historically significant varieties) are used for maturity time for stonefruits, ie days before or after a standard cultivar. The cultivars we used as maturity standards for peach, nectarine, plum, apricot and cherry are described in Appendix 1. Fruit size, fruit flavour, disease susceptibility, chilling requirement, and flowering time are other aspects of fruit description using a standard variety as a comparator. Standards for the various crops change from country to country and from breeder to breeder. For peaches and nectarines the two main standards for maturity time have been Redhaven and Elberta, however Floyd Zaiger uses his own variety Rich Lady. Within this database maturity times are described relative to the standard in Appendix 1. Information on other characteristics is presented using the author's description. If a comparator is used this is acknowledged in the description along with the reference.

All the varietal information was entered into dBASE 4¹ where, with minimal manipulation, it could be used for data presentation. Development of the final release package called the "The Stonefruit Cultivar System" is the principal project outcome. This program is "stand alone" (ie. needs no other software package to make it run), and contains a series of database files that have been incorporated into an authoring program called HyperWriter. HyperWriter relies on using hypertext where an operator moves through a program using a series of links. These links enable the user to travel around topics within the program (the individual data pages) and around files. This database is made up of eight files that can be accessed quite easily from any position in the program. Each file is a self-contained database and access program for a crop. The seven crops described are Peaches, Nectarines, Plums, Apricots, Cherries, Plumcots and Rootstocks. To date more than 2,500 cultivars, including 100 rootstocks, have been described.

Two other programs have been incorporated into the final release. HyperWriter could not print database pages because it was mainly a "viewing" medium rather than producing a "hard copy". Consequently, a small "page dump" printing program from Peliware (a private programming company in Houston, Texas, USA) was commissioned. It captures the screen image and sends it to the default printer and works very well with colour to capture the screens with photos. InstallShield 5 is the installation program to aid in loading and setting up a new installations.

Other software used in graphics and CD production are:

¹ When this project began dBASE was the industry standard for database development. Now, after more than 6 years of information gathering, technology has advanced beyond the more simplified DOS programs. Microsoft ACCESS is now considered more appropriate and is compatible with dBASE.



- Microsoft Access for data manipulation and list creation
- Deskscan 2 for scanning photos,
- Nikon Control 2.2 for scanning slides,
- HP Labeler for the CD front and back covers,
- CD Lablemaker for the clear CD stick on labels,
- Easy CD Creator for the burning of programs.

CD Production

This program will only have a limited world distribution of 200 copies. To produce a run of CD's commercially it costs around \$4,000 for a minimum production line of 500 copies. For such a limited production line it would be uneconomical to have so many unsold CD's, and expensive for program upgrades (a further \$4,000 for each run). In negotiations with HRDC we decided to produce all CD's in-house by burning copies with a CD burner built into a standard desktop computer. All artwork for the CD labels and Jewel Case inserts were developed here at the Applethorpe Research Station. By using this method of production the programs can be made on-request to keep up with demand and can be easily changed for upgrades at any stage.

Searching for Information

Buttons activate pre-programmed varietal lists. Choices are then made from these lists (Figure 1). A complete list of cultivars for each crop is generated to allow an **alphabetical** search. Find the name on the pick list by paging up or down then click with the left mouse on the cultivar to bring up the data sheet for that record.

Pick lists based on **chilling** requirement give choices of Low, Medium and High for peaches, nectarines and plums. Peaches and nectarines include a "chilling" thermometer that generates pick lists for different chill ranges (0-1200 hours). Apricots have choices for Medium and High chilling lists while cherries are only high chill.

Finally, where a **ripening date** is recorded a selection list is generated. Cultivars are ranked in ripening order relative to a standard variety (Appendix 1.) or Fruit Development Period² (FDP). FDP days are ranked from shortest to longest and as before by clicking on the cultivar name the record will appear.

Other secondary lists are provided on specific fruit traits that include white flesh, red flesh, non-melting, sub-acid and freestone varieties, and tree traits including dwarf, red leaf, ornamental, bacterial spot resistant and brown rot resistant varieties.

² With low chill cultivars, where ripening dates can vary because of small variations in environmental conditions, breeders use the number of days from flowering to harvest to determine ripening dates. This is known as Fruit Development Period (FDP).



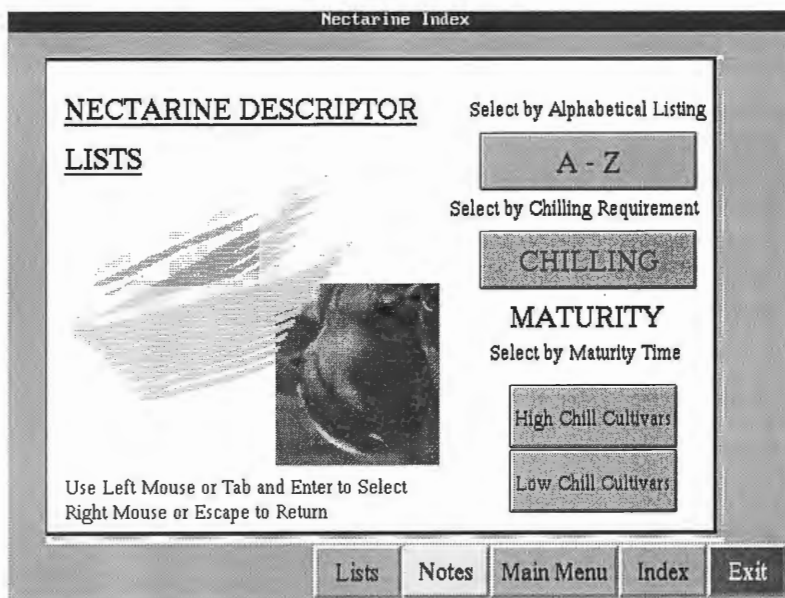


Figure 1. Nectarine descriptor lists.

Datasheets (Figure 2.) for each variety contain information of fruit and tree characteristics; the ripening date in relation to a standard; disease information; final summing up or additional remarks; the origin of the variety; who distributes that variety in Australia; and finally a reference where the information was sourced.

Once in the record or datasheet a user has the option of **adding a user note**. This is a method for adding personal information such as sprays used , flowering and ripening dates or market prices to that variety. Or to look up **descriptors** to go straight to the descriptor information on record fields such as fruit characteristics, tree characteristics, diseases, nurseries etc.

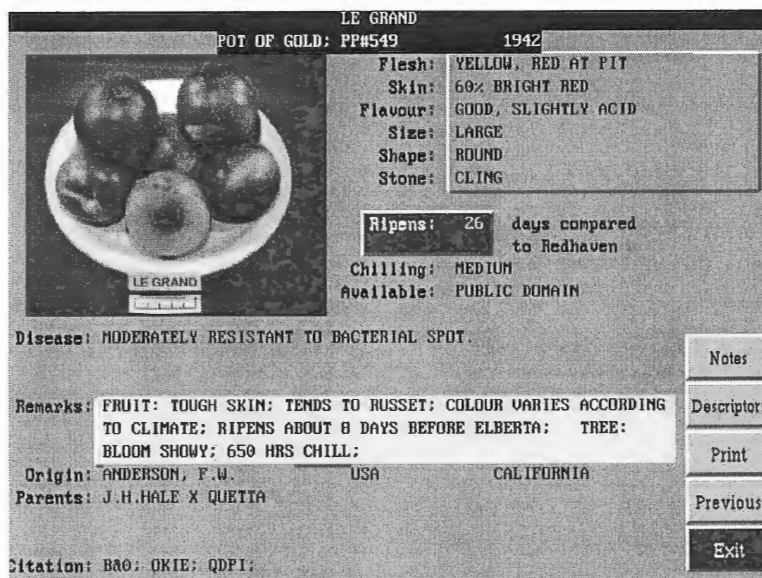
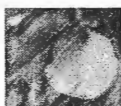


Figure 2. Data sheet or topic for LeGrand nectarine.

Text driven searches can also be used in either individual crops or a “boolean” search of the whole program. These prompt the user for a word to search and give the number of occurrences and where they can be found.



RESULTS AND DISCUSSION

More than 2,500 cultivars of stonefruit have been incorporated into the database. These have been made into separate files for each crop to aid data management and program navigation. These are listed below in Table 1 with a complete varietal list appearing in Appendix 2.

Crop	Number of Cultivars
Apricots	233
Cherries	361
Nectarines	328
Peaches	904
Plums	638
Plumcots	12
Rootstocks	109
Total	2585³

Table 1. Total number of cultivars by crop.

Within the program there are 120 preprogramed searches. Searches are button activated to generate cultivar lists with each name linked to a full screen datasheet and photo. Pictures are integral to the descriptive ability of the database. Of the 2,477 varieties (not including rootstocks) described there are 1048 with a photo, drawing or picture attached. There are a further 27 picture TIF files included for fruit character identification, disease identification and graphical display purposes.

System Requirements version 2.0 (CD ROM)

Windows 3 or above
80386 processor
4 Mb of RAM
10 Mb of hard disk space for a minimum install

The program has been set up to run from the CD to minimise illegal use and to save hard disk space. The setup program that installs THE STONEFRUIT CULTIVAR SYSTEM creates a directory called Prunus20 where the program files reside and for the location of saved personal information.

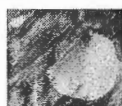
The program has 160Mb of information and pictures and runs best using a VGA 640 x 480 pixel display but can be run at 800 x 600 pixels (small fonts) or 1024 x 768 pixels (small fonts) on larger screens. Screen graphics appear best in 24 or 32 bit (true colour) colour display. However it can run quite adequately at different settings with some loss of picture file definition. . Each page can be printed (colour if desired) and if a substantial amount of printing is required then the 480 x 640 resolution is best.

Discussion

Publicity for the program has been generated through conference presentations and papers, conference and field day displays, presentations and press articles (Appendix 3). Considerable interest has generated for the project from displays and presentations at conferences like the ANFIC '97, "Stepping into the Future" conference, Penrith 1997, the 3rd National Stonefruit Industry Conference, Swan Hill, VIC, 22nd – 25th July, 1997 and the 4th National Stonefruit Industry Conference, Ballina, Northern Rivers, NSW, 10th – 14th August, 1998..

Just how can the success of a project such as this be measured? Given the interest displayed during the development of the database with varietal enquires, queries on program progress, it's cost and what

³ Some rootstocks have varietal performance and rootstock descriptions thus appearing in two separate lists.



exactly it can do, the project could be said to be successful. However, success needs to be measured by quantifiable outcomes. For this project it is the response through sales. To date there have been 33 copies of the database sold in Australia and overseas. Copies of the database have been sold in every mainland state in Australia as well as Thailand, Spain and New Zealand. A further 20 complementary copies are going to the original project contributors and 10 free copies to contributing researchers, industry and HRDC.

Because of the interest and support from those initial voluntary contributors (Page 3) a second measure can be quantified. More than 50 nurseries, grower organisations and growers were petitioned from around Australia to contribute to a varietal information package. Of those 50, 14 contributors responded, 9 of these were ANFIC nurseries and that organisation should be acknowledged as key supporters.

One of the major shortcomings of this project was the inability to set up a performance map of varieties for the major stonefruit regions in Australia. Breeders talk about Genotype by Environment interaction. Put simply, this means the ranked performance of a variety in different geographical locations may change. One of the proposed outcomes for this project was to construct a variety map indicating varietal performance in the various stonefruit regions. This would give growers and researchers a better idea of the varieties suited best to a given district. However this research is very difficult to achieve because of the rapid change in cultivars through all of the Australian Industry. For the future, the Australian Fresh Stonefruit Growers Association has deemed this research important to the delivery of information to the industry and wishes it to be included in the database package.

Further Research

New varieties are being released into the market constantly. Approximately 100 new stonefruit varieties may be released each year from private and public breeding programs around the world. Information on these new varieties is mostly written up in HortScience or Fruit Varieties Journal and occasionally into fruit magazines. There is an ongoing need for that information to be collated, then updated into an electronic form such as The Stonefruit Cultivar System. In the future, we hope to collaborate with Dr. Okie in Georgia, USA, to develop a web site and upgraded stand-alone version 3. This version of the database is under construction in Microsoft FrontPage, a web authoring package that can be run as a conventional "stand alone" program.



APPENDIX 1. Cultivars used as Fruit Ripening Standards

Redhaven Peach

REDHAVEN

1940



Flesh: YELLOW, SOME RED AT PIT

Skin: 70-90% RED/GOLDEN YELLOW

Flavour:

Size: MEDIUM-LARGE

Shape: ROUND

Stone: FREE

Ripens: 0 days compared to Redhaven

Chilling: HIGH

Available: PUBLIC DOMAIN

Habit: SPREADING

Disease: MODERATELY RESISTANT TO BACTERIAL SPOT.

Remarks: FRUIT: FRUIT OFTEN HAVE PRONOUNCED SUTURE AND A SOFT TIP IN DEEP SOUTH. STANDARD FOR HARDINESS WITH GOOD FRUIT;
TREE: BLOOM NON-SHOWY; 950 HRS CHILL; HIGH YIELD;

Origin: MAES, EAST LANSING USA MICHIGAN

Parents: HALEHAVEN X KALHAVEN. ONE OF THE MOST WIDELY GROWN PEACHES OF ALL TIME.

Citation: B&O; OKIE;

Notes

Descriptors

Print


Back

Exit

Santa Rosa Plum

SANTA ROSA

1920 salicina



Flesh: YELLOW-RED

Skin: BRIGHT-DARK RED

Flavour: GOOD

Size: MEDIUM

Shape: HEART

Stone: CLING

Ripens: 0 days compared to Santa Rosa

Chilling: MEDIUM

Available: PUBLIC DOMAIN

Pollinisor: WICKSON

Disease: TOLERANT TO BACTERIAL SPOT.

Remarks: FRUIT: SUBJECT TO FRUIT DROP RIGHT UP UNTIL HARVEST;
TREE: CHILLING 600 c.u., PARTIALLY SELF FRUITFULL, CROPS WELL.

Origin: BURBANK, L USA CALIFORNIA

Parents: COMPLEX HYBRID OF P.salicina, P.simonii and P.americana

Citation: QDPI;

Notes

Descriptors

Print

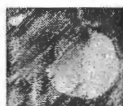
Back

Exit

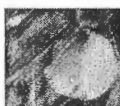


APPENDIX 2. Stonefruit Cultivars

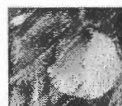
Peaches			
	BEQUETTE-FREE	CARNIVAL	CRIMSON-LADY
	BERENICE	CAROLINA-BELLE	CROSBY
	BETTY	CAROLYN	CROWN-PRINCESS
ADARCIA	BICENTENNIAL	CARSON	CULEMBORG
ADMIRAL-DEWEY	BIENVENUE	CARY-MAC	CULLINAN
ADRIA	BISCOE	CASELLAQUEEN	CUMBERLAND
AFTERGLO	BLACK	CASSIE	CURRA-EARLY
AKATSUKI	BLAKE	CATHARINA	DAISY
ALBATROS	BLAZEPRINCE	CENGUA-GUIA	DAVID-SUN
ALEXANDER	BLAZINGSTAR	CFN1	DAVIDSON
ALEXANDRA	BLOOD-CLING	CHADON	DAWNE
ALINE	BLOOD-LEAF	CHAFFEY	DE-WET
ALTON	BOBOLINK	CHAIRS	DELMASS
AMBER-CREST	BOKVELD	CHAMPION	DELTA
AMBERGEM	BOLAND	CHAN	DENHERT'S-EARLY
AMPARO	BOLERO	CHILI	DENMAN
AN-NONG-HONEY	BOLIVIA	CHIMARRITA	DERBY
ANABELLE	BONANZA	CHINESE-CLING	DESERTGOLD
ANDROSS	BONFIRE	CHINESE-FREE	DESERTPEARL
ANGELUS	BONJOUR	CHIPOLA-BELLE	DESERTRED
ANITA	BORGIA	CHIYOHIME	DIAMANTE
ANZAC	BOUNTY	CHUANZHONGDAO	DIAMOND-PRINCESS
ARCTIC-GEM	BOWEN	CHUI-LUM-TAO	DICKEY
ARCTIC-SUPREME	BR-1	CHULA	DIXIGEM
ARMGOLD	BR-2	CINDERELLA	DIXIGOLD
ARP	BR-3	CLASSZEE	DIXILAND
AUGUST-LADY	BR-4	CLAYTON	DIXIRED
AURORA	BR-6	CLIMAX	DOLORES
AUTUMN-BEAUTY	BR3	CLOCOLAN	DON-ELITE
AUTUMN-BLUSH	BRENDA-SUN	CLYDE-WILSON	DONGXUE-MITAO
AUTUMN-LADY	BRIGDON	COCONUT-ICE	DORATA-TARDIVA
AUTUMN-RED	BRIGHTON	COLLINS	DOROTHEE
AUTUMN-ROSE	BURCHELL-7	COLUMBA-RUBIETTE	DOUBLE-DELIGHT
AUTUMNGLO	BY520-9	COMANCHE	DOUBLE-JEWEL
AZTECGOLD	CADAMAN	COMONFORT	DR-DAVIS
BABCOCK	CADAMAN-AVIGMAG	COMPACT-ELBERTA	DRIPSTONE
BABYGOLD-5	CALRED	COMPACT-FLAVORETTE	DWARF-MANDARIN
BABYGOLD-6	CAMDEN	COMPACT-REDHAVEN	DWARF-PEACH
BABYGOLD-7	CANADA	CONTENDER	EARLIBELLE
BABYGOLD-8	CANADIAN-HARMONY	CORAL	EARLICREST
BABYGOLD-9	CANADIAN-QUEEN	CORONA	EARLIGLO
BARBARA	CANADIAN-WONDER	CORONA-PATTEN	EARLIGRANDE
BEALE	CANDOKA	CORONADO	EARLIHALE
BEEKMAN	CANDOR	CORONET	EARLIRED
BELL-NOVEMBER	CAPTAIN-EDE	CORRELL	EARLIRICH
BELLAIRE	CARDINAL	CRESTHAVEN	EARLIRIO
BELLE	CARMAN	CRIMSON-CASCADE	



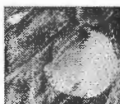
EARLY-AMBER	FELICIA	FREDA	GOLDENRED
EARLY-BABCOCK	FERTILIA-I	FREESTONE	GOLDILOCKS
EARLY-CORONET	FERTILIA-II	FROSTFREE	GOLDPRINCE
EARLY-CRAWFORD	FICKSBURG	FROSTKING	GOVERNOR-HOGG
EARLY-ELBERTA	FIDELIA	FROSTQUEEN	GRANITE-SUPREME
EARLY-ELEGANT-LADY	FIESTAZEE	GALA	GRATIA
EARLY-FAIRTIME	FINALE	GARNET	GREENSBORO
EARLY-GOLDEN-QUEEN	FIREBALL	GEMCREST	GUGLIELMINA
EARLY-LORING	FIREGLOW	GEMFREE	HAIG-ARAKELIAN
EARLY-MAYCREST	FIREPRINCE	GENADIX-4	HAKUHO
EARLY-O'HENRY	FIRERED	GENADIX-5	HAKUTO
EARLY-RED-FREE	FITZGERALD	GENADIX-6	HAL-BERTA-GIANT
EARLY-REDHAVEN	FLA-85-1	GENADIX-7	HALE-EARLY
EARLY-TOP	FLAMECREST	GENERAL-LEE	HALEHAVEN
EARLY-WHITE-GIANT	FLAMEPRINCE	GEORGE-IV	HALFORD
EARLY-YORK	FLAMIN'-FURY(PF-1)	GF305	HALLOWEEN-I
EARLYCREST	FLAMIN'-FURY(PF-15A)	GF53-7	HALLOWEEN-II
ECLIPSE	FLAMIN'-FURY(PF-17)	GF557	HAMLET
EDEN	FLAMIN'-FURY(PF-23)	GF677	HANSEN-2168
EDGEMONT	FLAMIN'-FURY(PF-27A)	GIANT-BABCOCK	HANSEN-536
ELBERTA	FLAMIN'-FURY(PF-7)	GIANT-ELBERTA	HANTAM
ELBERTITA	FLAMINIA	GLADYS	HARBELLE
ELDORADO	FLAVOR-QUEEN	GLENALTON	HARBINGER
ELDORADO-DWARF	FLAVORCREST	GLENGLO	HARBRITE
ELEGANT-LADY	FLORDABEAUTY	GLENNA	HARCREST
ELLERBE	FLORDABELLE	GLOBEHAVEN	HARKEN
ELOISE	FLORDACREST	GLOHAVEN	HARLAND
EMERY	FLORDADAWN	GLORY	HARMONY
ENCORE	FLORDAGEM	GOLD-DROP	HARRISON
ENGLE	FLORDAGLO	GOLDCREST	HARROW-BEAUTY
ENVOY	FLORDAGLOBE	GOLDEN-AMBER	HARROW-BLOOD
ERLVEE	FLORDAGOLD	GOLDEN-BABCOCK	HARROW-DIAMOND
ERNIE'S-CHOICE	FLORDAGRANDE	GOLDEN-BEAUTY	HARROW-RUBIROSE
ESCARLATE	FLORDAGUARD	GOLDEN-BLAZE	HARSON
ESMERALDA	FLORDAHOME	GOLDEN-CHARM	HARVESTER
EUREKA	FLORDAKING	GOLDEN-CREST	HAVIS
EVA'S-PRIDE	FLORDAMEX	GOLDEN-DAWN	HAWAIIAN
EVERTS	FLORDAMEX-1	GOLDEN-DELIGHT	HAWTHORNE
EXCELLENCE	FLORDAPRINCE	GOLDEN-ELBERTA-CLING	HEATH-CLING
FAIRHAVEN	FLORDAQUEEN	GOLDEN-GLORY	HEATH-FREE
FAIRTIME	FLORDARED	GOLDEN-HAZE	HELEN-BORCHERS
FAIRWAY	FLORDARIO	GOLDEN-JUBILEE	HERMOSA
FAMILY-FAVORITE	FLORDASTAR	GOLDEN-LADY	HERMOSILLO
FANCY-LADY	FLORDASUN	GOLDEN-MASTERPIECE	HERRINGTON
FANTASTIC-ELBERTA	FLORDAWON	GOLDEN-MONARCH	HESSE
FAVORITA-I	FORASTERO	GOLDEN-QUEEN	HICKMAN'S-ELBERTA
FAVORITA-II	FORESTGOLD	GOLDEN-QUEEN(RS)	HIGAMA
FAVORITA-III	FORTYNINER	GOLDEN-STATE	HILAND
FAY-ELBERTA	FOSTER	GOLDEN-SUN	HILEY
FAYETTE	FRAGAR	GOLDEN-SUPREME	HONEY-BEE



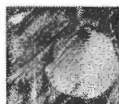
HONEY-DEW-HALE	KALAMAZOO	LOVELL	MONCAVE-OPALE
HONEY-RED	KALHAVEN	LUCREZIA	MONROE
HONORA	KEARNEY	LUCY	MONTCLAR
HYNES	KENLATE-ELBERTA	MADELEINE-POUYET	MONVER-VERMEIL
IDLEWILD	KERN-SUN	MADISON	MORRIS-WHITE
ILLINOIS	KEYSTONE	MAGNO	MOUNTAIN-ROSE
IMERA	KILLIEKRANKIE	MAGNOLIA	MR-S-2/5
IMPERANI	KINGSTON-REDLEAF	MAJESTIC	MUIR
IMPERIAL	KIRKMAN-GEM	MAMIE-ROSS	MY-O-MY
IMPORA	KLAMT	MANON	MYRAN
IMPROVED-MARDIGRAS	KOHHOH	MARAVILHA	NAKATSU-WASE-HAKUTO
IMPROVED-PACIFICA	KURAKATA-YELLOW	MARCHESA	NECTAR
INGWE	LA-FELICIANA	MARDIGRAS	NELL
IRON-MOUNTAIN	LA-JEWEL	MARGLOW	NEMAGUARD
ITO-RED	LA-PECHER	MARHIGH	NEMARED
IVORY-PRINCESS	LA-PEROUSE	MARIA-BIANCA	NEMASUN-1
J-H-HALE	LA-RED	MARIA-CRISTINA	NEW-GENERATION
J-M-MACK	LACEY	MARIA-DELIZIA	NEWBELLE
JADE	LADY-ERICA	MARIA-GRAZIA	NEWHAVEN
JAYHAVEN	LADY-LOU	MARIA-LUISA	NIAGARA
JEFFERSON	LADY-NANCY	MARIA-ROSA	NOBLE-ZEE
JEFFERSON-SUN	LAFESTIVAL	MARIA-SERENA	NORMAN
JENNIE-WORTHEN	LAGEM	MARIGOLD	NUEVO
JERSEYDAWN	LAGNASCO	MARLAND	O'HENRY
JERSEYGLO	LAGOLD	MARPRIDE	OKINAWA
JERSEYLAND	LAMONT	MARQUEEN	OKTOBERFEST
JERSEYPINK	LANDRETH	MARSUN	OKUBO
JERSEYQUEEN	LAPREMIERE	MASSASOIT	OLDMIXON-CLING
JIM-BOWIE	LARED	MATSUMORI-WASE	OLDMIXON-FREE
JIM-DANDEE	LARGE-YORK	MAXINE	OLINDA
JIM-WILSON	LAST-CHANCE-NUMBER-1	MAY-LADY	OOM-SAREL
JODY-GAYE	LATE-BABCOCK	MAY-LEE	OP482
JON-BOY	LATE-CRAWFORD	MAY-PRIDE	OPODEPE
JUBILANT	LATE-LORING	MAY-SUN	OPULENT
JUBILEE	LATE-RARERIPE	MAYBELLE	ORIOLE
JULIOR	LATE-SUNHAVEN	MAYCREST	ORION
JULY-ELBERTA	LATE-WHITE-GLOBE	MAYFLOWER	ORLANDINE
JULY-HEATH	LAURENCE	MAYGOLD	ORO-A
JULY-LADY	LAUROL	MCKUNE	ORRVALE-QUEEN
JULY-LADY-IMPROVED	LAWHITE	MCNEELY	OUACHITA-GOLD
JULY-SUN	LEGACY	MEIKUEILU	OZARK
JUMBO	LEGEND	MELODIE	PACEMAKER
JUNE-BRIDE	LEMON-FREE	MERRIAM	PALLAS
JUNE-GOLD	LEONENSE	METEOR	PARADE
JUNE-LADY	LEVY	MICHELINI	PAVIE-BLANC
JUNE-PRIDE	LILIAN-BURROWS	MIDWAY	PEACH-ARINE
JUNE-SUN	LIPPIATE-LATE	MILAM	PEARSON
JUNECREST	LIZBETH	MIREILLE	PEARSON-HILEY
JUNEPRINCE	LOLA	MISSOURI	PEENTO
KAKAMAS	LORING	MONATE	PEKIN



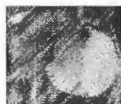
PERICA	REDKIST	SALEM	SPRINGTIME
PF-24-007	REDQUEEN	SALWEY	ST-JOHN
PIEDMONTGOLD	REDRAN	SAM-HOUSTON	ST-JULIEN
PILCHA	REDROSE	SAN-PEDRO	ST-JULIEN-NO-1
PINK-CASCADE	REDSKIN	SAOTOME	ST-JULIEN-NO-2
PIX-ZEE	REDTOP	SATURN	STANISLAUS
PLODIV-1	REDWING	SCARLET-O'HARA	STARCREST
POLAR	REEVES	SCARLET-SNOW	STARCREST
POWELL-GEM	REGAL	SCARLETPEARL	STARDUST
PRAIRIE-CLIPPER	REGINA	SCHUMAKER	STARK'S-ELBERTA
PRAIRIE-DAWN	REGINA-DI-OTTOBRE	SENSATION	STARK-GULF-QUEEN
PRAIRIE-DAYBREAK	RELIANCE	SENTINEL	STARK-SATURN
PRAIRIE-RAMBLER	RENDIDOR	SENTRY	STARK-SENSATION
PRAIRIE-ROSE	RHODES	SEPTEMBER-LADY	STARKING-DELICIOUS
PRAIRIE-SCHOONER	RHONDA	SEPTEMBER-SNOW	STARLITE
PRAIRIE-SUNRISE	RICH-LADY	SEPTEMBER-SUN	STEVENS
PRECOCINHO	RICH-MAY	SHERMANS-EARLY	STUMP
PREMIER	RICHHAVEN	SHERMANS-RED	SUGAR-GIANT
PRETTY-LADY	RIO-GRANDE	SIBERIAN-C	SUGAR-LADY
PRIMECREST	RIO-OSO-GEM	SIERRA-LADY	SUGAR-MAY
PRIMROSE	RIVERS	SILVERADO	SUGARSWEET
PRINCESS-ANNE	RIZZI	SILVIA	SULINA
PRODIGIOSA-MORETTINI	ROBERTA-BAROLA	SINUJLO	SUMMER-BREEZE
PROLIFIC	ROBIN	SIRIO	SUMMER-GIANT
PULLARS-CLING	ROCHESTER	SMOCK	SUMMER-LADY
QINMI	ROCHON	SNOW-DIAMOND	SUMMER-PEARL
QUEENCREST	ROMANCE	SNOW-GIANT	SUMMER-PRIDE
RADIANCE	ROSIRED-3	SNOW-KING	SUMMER-RICH
RANCHERO	ROSY-DAWN	SNOWBRITE	SUMMER-SNOW
RANCHO-REDLEAF	ROYAL-APRIL	SOLAR-GOLD	SUMMER-SUN
RANGER	ROYAL-GEM(A)	SOLO	SUMMER-SWEET
RARITAN-ROSE	ROYAL-GEM(Z)	SOM-MOR	SUMMERCREST
RAY	ROYAL-GOLD	SOMERSET	SUMMERGLO
RAYCREST	ROYAL-HAVEN	SOMERVEE	SUMMERGOLD
RAYON	ROYAL-LADY	SONETTE	SUMMERPRINCE
RED-BARON	ROYAL-MAY	SOUTHERN-FLAME	SUMMERROSE
RED-CHEEK-MELOCOTON	ROYAL-RED	SOUTHERN-ROSE	SUMMERSET
RED-DWARF	ROZA	SOUTHERN-SWEET	SUN-LADY
RED-GOLD	RUBIRA	SOUTHLAND	SUNAPEE
RED-JACK	RUBIRED	SPARKLE	SUNBRIGHT
RED-LADY	RUBY-MAY	SPECIAL-RED-JULY	SUNBRITE
RED-SUN	RUBYPRINCE	SPOTO-GEM	SUNCLING
REDBIRD	RUSTON-RED	SPRAQUE	SUNCREST
REDCAL	RUTGERS-GREENLEAF	SPRING-BABY	SUNDAY
REDCAP	RUTGERS-REDLEAF	SPRING-GEM	SUNGLOW
REDCREST	RYAN-SUN	SPRING-LADY	SUNHAVEN
REDDAWN	S-37	SPRINGBELLE	SUNHIGH
REDELBERTA	SAFARI	SPRINGBRITE	SUNLAND
REDGLOBE	SAFINA	SPRINGCREST	SUNNYSIDE
REDHAVEN	SAFIRA	SPRINGGOLD	SUNPRINCE



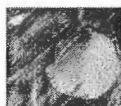
SUNQUEEN	TUCKER'S	YAKIMA-HALE	APRICOT
SUNRAY	TUDIA	YANCO-QUEEN	ARCH-DUKE
SUNRISE	TUFTS	YELLOW-RARERIPE	ARCHDUKE
SURECROP	TUNDZHA-1	YU-TIAN	ARCTIC
SURPASSE	TURQUESA	YUANDONG-BAITAO	ARKANSAS
SUWANEE	TYLER	YUBAI	ARMELITA
SWEENEY	TZIM-PEE-TAO	YUMEYONG	ASSINIBOINE
SWEET-GEM	UFGOLD	ZACHARY-TAYLOR	ATHERTON
SWEET-SUE	UNIQUE	ZAIFENGWANG	AU-AMBER
SWEETHAVEN	VALENTINE	ZAOSHUOMI	AU-CHERRY
SYMPHONIE	VALIANT	ZEE-LADY	AU-PRODUCER
TALANA	VALLEGRANDE	ZEE-RED	AU-ROADSIDE
TARDIVA-DI-LEONFORTE	VALLEY-GEM	ZHINGQIOU-PANTAO	AU-ROSA
TASTY-ZEE	VALLEY-RED		AU-RUBRUM
TATURA-203	VALLEY-SUN		AUTUMN-BEAUT
TATURA-204	VAN-RIEBEECK		AUTUMN-BRITE
TATURA-211	VANGUARD		AUTUMN-COMPOTE
TATURA-212	VANITY		AUTUMN-GIANT
TATURA-222	VEDETTE		AUTUMN-PRIDE
TATURA-223	VEDOKA		AUTUMN-QUEEN
TATURA-AURORA	VEECLING	Plums	AYLESBURY
TATURA-DAWN	VEEFREEZE		BARTLETT
TATURA-NOON	VEEGLO	ABUNDANCE	BARTON'S-PRIDE
TATURA-SUNRISE	VELVET	ADARA	BASSETT
TATURA-SUNSET	VERSICOLOUR	ADEMIR	BAVAY
TAYLOR QUEEN	VESNA	ADESOTO-101	BEAUTY
TAYLOR-QUEEN	VESPER	ADMIRAL	BEJONNIERES
TEXROYAL	VETERAN	AGEN	BELGIAN-PURPLE
TEXSTAR	VICEROY	AITKIN	BELLA-ROSA
THIARA	VILA-NOVA	AKIHIME	BELLE
THURBER	VISTARICH	ALETA-ROSE	BELLE-DE-LOUVAIN
TOKANE	VIVID	ALHAMBRA	BELLE-DE-SEPTEMBER
TOM-THUMB	WADDELL	ALLGROVE'S-SUPERB	BELLEROSA
TOPAZ	WAGER	ALLRED	BERCKMANS
TOPCREST	WAHLBERT	ALTHAM	BERGER
TRA-ZEE	WALDO	AMAZON	BETTY-ANNE
TRANSVALIA	WATERLOO	AMBER-JEWEL	BIG-CIS
TREASURE	WAVEREN	AMERICA	BILLINGTON
TRETHOWAN	WELBERTA	AMERICAN	BLACK-BEAUT
TRI-LITE	WELDON	AMERICAN-EAGLE	BLACK-BULLACE
TRIANA	WHEATLAND	AMES	BLACK-DIAMOND
TRIOGEM	WHITE-ENGLISH	AN-GEE	BLACK-FLAME
TRIUMPH	WHITE-HALE	ANDERSON	BLACK-GOLD
TROPI-BERTA	WHITE-LADY	ANGELENO	BLACK-GOLD(2)
TROPIC-BLUSH	WHITE-ROBIN	ANGELINA	BLACK-JACK
TROPICBEAUTY	WHYNOT	ANGELINA-BURDETT	BLACK-JEWEL
TROPICSNOW	WIGGINS	ANNA-SPATH	BLACK-KELSEY
TROPICSWEET	WINBLO	ANNA-SUN	BLACK-NOBLE
TROTH	XIAHUEI-1	AP-3	BLACK-PREMIUM
TROY	XIRBI	APPLE	BLACK-PRINCE



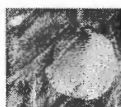
BLACK-RUBY	CLIMAX	EARLIEST-OF-ALL	FLAVORICH
BLACK-TORCH	CLING-STEM	EARLIQUEEN	FOREST-GARDEN
BLACKAMBER	CLYMAN	EARLISWEET	FOREST-ROSE
BLACKMAN	COCHECO	EARLY-FAVOURITE	FORMOSA
BLAISDON-RED	COE'S-CRIMSON-DROP	EARLY-GREENGAGE	FORTUNE
BLEEKER	COE'S-GOLDEN-DROP	EARLY-LAXTON	FOTHERINGHAM
BLIREIANA	COE'S-VIOLET	EARLY-ORLEANS	FREEDOM
BLUE-GIANT	COLEUS	EARLY-RIVERS	FREEMAN
BLUE-KNIGHT	COLUMBIA	EARLY-ROYAL	FREESTONE
BLUE-PERDRIGON	COMPACT-FRIAR	EARLY-TOURS	FRENCH
BLUE-ROCK	COMPASS	EARLY-YELLOW	FRIAR
BLUEBYRD	COOPER'S LARGE	EBONY	FROGMORE
BLUEFRE	COPPER	EBONY-SUN	FROME-CROSS
BODDAERT	COUNT-ALTHANN'S-GAGE	ECLIPSE	FRONTIER
BOEHMERI	COX'S-EMPEROR	EDDA	FROST-GAGE
BRADSHAW	CRIMSON	ELDORADO	FRUST
BRAHAY'S-GREENGAGE	CRIMSON-NUGGET	ELEPHANT-HEART	GAR-BELMONT
BROKEN-HEART	CRITTENDEN	ELSIE	GAR-JUMBO
BRUCE	CRYSTAL	ELVINS	GAR-RED
BRYANSTON	CURLEW	EMPEROR	GAR-ROSA
BRYANSTON-GAGE	CZAR	EMPIRE	GARNET-PL
BULLACE-(BLACK)	D'AGEN	ENGLEBERT	GAUJARDII
BULLACE-(LANGLEY)	D'ENTE-42	ENGRE	GEORGE WILSON
BULLACE-(SHEPHERD'S)	D'ENTE-707	ERUNI	GEORGESON
BULLACE-(WHITE)	DAMAS-GF1869	ESPEREN	GERMAN-PRUNE
BURBANK	DAMSON	EVESHAM-WONDER	GERTH
BURGUNDY	DAMSON-BRADLEY'S-KING	EXPLORER	GF43
BURMOSA	DAMSON-FARLEIGH	FELLENBERG	GIANT-PRUNE
BYRON-GOLD	DAMSON-PRUNE	FERMAREINE	GISBORNE
CACAK'S-BEAUTY	DAVIS	FESTERI	GLASS
CACAK'S-BEST	DAWSON	FIELD	GOLDEN
CACAK'S-EARLY	DE-CARADEUC	FIRE-QUEEN	GOLDEN-BEAUT
CACAK'S-FRUITFUL	DE-SOTO	FIRST-BEAUT	GOLDEN-BEAUTY
CACAK'S-SUGAR	DECAISNE	FLA-86-1	GOLDEN-CHERRY
CALIFORNIA-BLUE	DEL-REY-SUN	FLA-86-2	GOLDEN-DROP
CALITA	DENNISTON'S-SUPERB	FLA-86-3	GOLDEN-GLOBE
CAMBRIDGE-GAGE	DIAMOND	FLA-86-4	GOLDEN-NECTAR
CAROLINE-HARRIS	DIMMOCK-RED	FLA-86-5	GOLDEN-TRANSPARENT
CASSELMAN	DITTISHAM-PLOUGHMAN	FLA-86-6	GOLIATH
CASTLETON PL	DIVERSIFOLIA	FLA-86-7	GONZALES
CATALINA	DOLLY	FLA-86-8	GRAND-DUKE
CELEBRATION	DONSWORTH	FLA-87-1	GRAND-ROSA
CHABOT	DOUBLE-FLOWERING-GAGE	FLA-87-10	GREEN-GAGE
CHALCO	DOUBLE-FRENCH-PRUNE	FLA-87-11	GREEN-SWEET
CHAMBOURCY	DOWNING	FLA-87-2	GREY-PLUM
CHAMPION	DRAP-D'OR	FLA-87-3	GUEII
CHENEY	DUANE	FLA-87-4	GULFBEAUTY
CISTENA	DURADO	FLA-87-6	GULFBLAZE
CITATION	E-TRANSPARENT-GAGE	FLA-87-8	GULFGOLD
CLARK-HILL-REDLEAF	EARLIBLUE	FLAMING-DELICIOUS	GULFRUBY



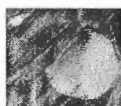
GUTHRIE-LATE	KIRKE	METHLEY	OREN
GYPSY-RED	KIRKE'S-BLUE	MID-RED	ORLEANS
HALE	KNAUS	MIDDLEBURG	OTHELLO
HAMMER	KRAUTER'S-VESUVIUS	MIDNITE-SUN	OULLIN'S-GAGE
HAND	LAETITIA	MIDROSAS	OULLINS
HANSKA	LAFAYETTE	MILLER-SUPERB	OVAL-CRIMSON
HARRY-PICKSTONE	LAIRE	MILTON	OZARK-PREMIER
HAWKEYE	LARGE-ENGLISH	MINER	PACIFIC
HEART-OF-GOLD	LARODA	MINNESOTA-PURPLE	PALATINE
HERON	LATE-MIRABELLE	MIRABELLE	PALLET
HERRIET	LATE-MUSCATELLE	MIRABI	PAUL-EARLY
HILDRETH	LATE-ORANGE	MIRACLE	PEACH
HOLLYWOOD	LATE-ORLEANS	MIRAGE	PEARL
HOMESIDE	LATE-SANTA-ROSA-1	MISTAWASIS	PEMBINA
HOWARD-SUN	LATE-SANTA-ROSA-2	MITCHELSON'S	PERESVET
HUDSON	LATE-TRANSPARENT	MONARCH	PERSHORE
HULINGS	LAWRENCE	MONROE	PETERS
HUNGARIAN	LAWSON'S-GOLDEN	MOREMAN	PINGGUOLI
HUNTER-LATE	LAXTON'S-BLACKBIRD	MOROCCO	PISSARDII
ICKWORTH	LAXTON'S-BLUE-TIT	MORRIS	PIXY
ICKWORTH-IMPERATRICE	LAXTON'S-BOUNTIFUL	MOSERI	PIZZAZ
IMPERATRICE	LAXTON'S-CROPPER	MOTTLED-PRUNE	POLLY
IMPERIAL-EPINEUSE	LAXTON'S-DELICIOUS	MOYER	POND
IMPERIAL-GAGE	LAXTON'S-GAGE	MR-PAUL	POND'S-SEEDLING
IMPROVED-D'AGEN	LAXTON'S-GOLDFINCH	MT-ST-HELENS	POOLE-PRIDE
IMPROVED-METHLEY	LAXTON'S-PROSPERITY	MYROBALAN	POTTAWATTAMIE
ISHTARA	LAXTON'S-SUPREME	MYROBALAN-29-C	PRESIDENT
ITALIAN-PRUNE	LEMBRUN	MYROBALAN-B	PRIMA-BLACK-PLUM-5-25
ITALIAN-PRUNE	LINCOLN	NARRABEEN	PRIMA-BLACK-PLUM-8-15
JAKE'S-BEST	LOLITA	NECTARINE	PRIMA-RED-PLUM-9-1
JANUARIA	LOMBARD	NEW-ULM	PRINCE-ENGLEBERT
JAPEX	LONG-FRUIT	NEWARK	PRINCE-OF-WALES
JASPI	LONGJOHN	NEWMAN	PTITSIN
JD-1	LUCOMBE	NEWPORT	PUNIAN
JEFFERSON	MAJESTIC-M	NICHOLAS	PURPLE
JIOULONGLI	MANACCAN	NIGRA	PURPLE-FLAME
JODSIGNE'S-GREENGAGE	MAQUOKETA	NUBIANA	PURPLE-FLASH
JOHN-JOHN	MARIANNA	OAKS	PURPLE-GAGE
JOHNNIE-MOOR	MARIANNA-2623	OCCIDENT	PURPLE-KING
JUICY	MARIANNA-2624	OICHEEDA	PURPLE-MAJESTY
JULY-SANTA-ROSA	MARIANNA-GF8-1	OCTOBER	PURPLE-PERSHORE
JUNE-BEAUT	MARIDON	OCTOBER-GEM	PURPLE-PIGMY
KAGA	MARIPOSA	OCTOBER-PURPLE	PURPLE-PONY
KAHINTA	MARJORIE'S-SEEDLING	OCTOBER-SUN	PURPLEHEART
KEA	MARU	OGON	PURPLELEAF-KELSEY
KELSEY	MAYNARD	OKA	PURPUREA
KENTISH-BUSH	McLAUGHLIN	OLEAN	PURPUSII
KERR	MCLAUGHLIN'S-GAGE	OPATA	QUACKENBOSS
KING-BILLY	MEREDITH	OPHIR	QUEEN-ANNE
KING-DAMSON	MERRYWEATHER	ORANGE	QUEEN-ROSA



RADIANCE	SEGUNDO	TEME-CROSS	WOLF
RANCH-9-GOLDEN	SENECA	TENNANT	WOOD
RANCH-9-MAROON	SERGEANT	THAMES-CROSS	WOODII
RANCHO-CINCO	SEVERN-CROSS	THIELES	WORLD-BEATER
RANCHO-OCHO	SHALOM	THUNDERCLOUD	WRIGHTII
RAY'S-HOPE	SHARP	TION SLADKY	WUHL
RED-ACE	SHARRON'S	TOKA	WYANT
RED-ACE(QLD)	SHELDRAKE	TOKAY-RED	WYEDALE
RED-APRICOT	SHIPPER	TRAGEDY	YELLOW-EGG
RED-BEAUT	SHIRO	TRAILBLAZER	YELLOW-GAGE
RED-DATE	SHOWTIME	TRANSPARENT	
RED-DIAPER	SHROPSHIRE	TRANSPARENT-GAGE	
RED-GIANT	SIERRA-SWEET	UNGARISH	Apricots
RED-JUNE	SIMKA	UNNAMED	ALEX
RED-MAGNUM-BONUM	SIMON	UNNAMED-A	ALFRED
RED-NOBLE	SIMPSON	UNNAMED-G	ALVES
RED-NUGGET	SIOUX	UTAH	AMBER
REDGOLD	SMALL-REINE-CLAUDE	UTILITY	ANDA
REDHEART	SMITH-ORLEANS	VALENTINE	AURORA
REEVES	SONGOLD	VANIER	AUTUMN-ROYAL
REINE-CLAUDE-DE-BAVAY	SOPHIE	VEEBLUE	AVIKOT-MALICE
REINE-CLAUDE-VIOLETTE	SOUTH-DAKOTA	VEITCHII	BASSHAM-LATE
REUBENNEL	SPAULDING	VESUVIUS	BEBECO
RIVERS'-EARLY-PROLIFIC	SPENCER-HOLLYWOOD	VICTOR-LARGE-FRENCH	BELIANA
ROBINSON	SPRING-BEAUT	VICTORIA	BENMORE
ROBUSTO	ST-MARTIN	VICTORY	BERGERON
ROEBUCK-CASTLE	STANAPA	VIKING-PRIDE	BIG-DAVIS
ROLLINGSTONE	STANLEY	VIOLET-DIAPER	BLENHEIM
ROSA-MINEIRA	STANTON	VORONESH	BLENRIL
ROSE-MARY	STARK-BLUE-RIBBON	VOYAGEUR	BOCCUCCIA
ROSE-ZEE	STARKING-DELICIOUS	WADE	BOCCUCCIA-LISCIA
ROSEA	STINT	WALES	BOREALE
ROYAL-DIAMOND	STIRLING	WANETA	BOWERS
ROYAL-RED	STODDARD	WANGENHEIM	BROOKS
ROYAL-STAR	STONELESS	WARWICKSHIRE-DROOP	BRYAN
ROYAL-TOURS	SUGAR	WASHINGTON	BULIDA
ROYAL-ZEE	SULTAN	WASHINGTON-USA	CAFONA
ROYSUM	SUMMER-TREAT	WAYLAND	CALDESI-1
RUBY-BLOOD	SUPLUMTWENTY	WEAVER	CANINO
RUBYSWEET	SURPRISE	WEeping-SANTA-ROSA	CAPE-BEBECO
SAINT-CATHERINE	SWAN	WESTERNER	CASE'S-EARLY
SAINT-JULIEN	SWEET-DELIGHT	WHITE-BULLACE	CASELIN
SAINT-MARTIN	SWEET-ELINOR	WHITE-DAMSON	CASTLEBRITE
SALAD	SWEET-GYPSY	WHITE-IMPERATRICE	CASTLETON
SANTA-ROSA	SWEET-HEART	WHITE-MAGNUM-BONUM	CATELL
SANTA-ROSA-TWO	SWEET-QUEEN	WHITE-PERDRIGON	CHULLI
SAPA	SWEET-ROSA	WICKSON	CLUTHAGOLD
SATSUMA	SWEETHEART-(McGRAW)	WILD-GOOSE	COFFING
SAUNDERS	TECUMSEH	WILLARD	CURTIS
SCARLET-SUN	TEGAN-BLUE	WILSON	CUTLER



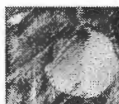
DALLAS	HARGLOW	MOROCCO	SINO
DEATRICK	HARGRAND	MYSTERY	SKAHA
DELMAST	HARLAYNE	NEWCASTLE	SOLDONNE
DIVINITY	HAROGEM	NINGUTA	SOUTHERNER
DUNDONALD	HARRIET	NJA53	SOUTHWICK
DUNSTAN	HARVAL	NJA54	SPRING-GIANT
EARLE-ORANGE	HELENA-DU-ROUSSILLON	NUGGET	STARK-DOUBLE-DELIGHT
EARLI-SUN	HEMSKIRK	ORANGERED	STARK-EARLI-ORANGE
EARLIGOLD	HENDERSON	PALSTEYN	STARK-GIANT-TILTON
EARLIRIL	HOUCALL	PALUMELLA	STEINDORF
EARLY-BEE	HULAN	PANSHIXING	STEVENS-FAVOURITE
EARLY-BLENHEIM	HUNTER	PATTERSON	STORY
EARLY-CAPE	IVONNE-LIVERANI	PEEKA	SUN-GLO
EARLY-DIVINITY	JANNES	PELLECHIELLA	SUNDROP
EARLY-GOLD	JAUBERT	PERFECTION	SUNGOLD
EARLY-MOORPARK	JERSEYCOT	PERLA	SUNSHINE
EARLY-ROYAL	JUNBO-COT	PHELPS	SUPER-GOLD
EI	KAISHA	PIET-CILLIE	SWEET-PIT
ERNIE-FEHR	KALEDEN	PINKERTON	SWEETHEART
F168	KATY	PIU-SHA-SIN	TARDIF-DE-BORDANEIL(1)
F194	KERR'S-SEEDLING	POLONAIS	TARDIF-DE-BORDANEIL(2)
FARMINGDALE	KING	POMO	THOMPSON-EARLY
FERRIANA	KINGSTON-ROYAL	PORTICI-6	TILTON
FLAMEBURST	KINROSS	PRECOCE-di-IMOLA	TIRYNTHOS
FLAMING-GOLD	LADISUN	PRIANA	TOLA
FRANCESCO	LALIN	PUGET-GOLD	TOMCOT
FRANCISCAN	LAMALE	REALE-di-IMOLA	TRACY
GABRIEL	LAMBERTIN-NO1	REDSWEET	TREVATT
GENEVA	LARGE-EARLY	REEVES	TRI-GEMS
GF31	LARGE-RED	RELIABLE	TUNISIAN-G8
GIADA	LESLIE	RILAND	VALNUR
GLENGARRY	LUIZET	RIVAL	VEECOT
GOLD-DOLLAR	MALAN-ROYAL	ROBUST	VELVAGLO
GOLD-KIST	MANCHU	ROUGE-DE-FOURNES	VICEROY
GOLDBAR	MANTOY	ROUGE-DE-RIVESALTES	VICTORIA
GOLDCOT	MARI-DE-CENAD	ROUGE-DE-ROUSSILLON	VIVAGOLD
GOLDEN-AMBER	MARIA-MATILDE	ROUGET-DE-SERNHAC	VULCAN
GOLDEN-DELICIOUS	MARIEM	ROXBURGH-RED	WATKINS
GOLDEN-GEM	MASCOT	ROYAL	WENATCHEE
GOLDEN-GIANT	MASCOT	ROYAL-BLENHEIM	WESTCOT
GOLDEN-SWEET	MAX-GOLD	ROYAL-ROSA	WESTLEY
GOLDENSWEET	MODESTO	S14	WORLEY
GOLDRICH	MOHR	S143	XIAJIN-KUEIXING
GOLDSTRIKE	MONIQUI	SAN-CASTRESE	ZUN
HAFER	MONO	SANSIN	
HAGGITH	MONOCO-BELLO	SCEARA	
HARBIN	MOONGOLD	SCHEIGHING	Cherries
HARCOT	MOORPARK	SCOUT	
HARDY	MORDEN-601	SHAMROCK	ABBESSE-D'OIGNIES
HARDY-IOWA	MORDEN-604	SING	ACCOLADE



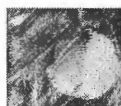
ADRIANA	CAMIL	EMPRESS	JUBILEE
ALICE	CAMPANULATA	EMPRESS-EUGENIE	JUNE-RED-MONT
AMANOGAWA	CARNATION	ENGLISH-MORELLO	KANSAN
ANGELA	CARNIVAL	FERCI-PONTALEB	KANSAS-SWEET
ARCH-DUKE	CASHMERE	FERNWOOD	KELLERIS-16
ARIAKE	CELESTE	FERROVIA-SPUR	KIKU-SHIDARE-ZAKURA
ARTASKAJA	CENTENNIAL	FLORE-PLENO	KING-AMARELLE
ASANO	CHAPMAN	FLORENCE	KIRTLAND
ASCENDENS	CHARGER	FRUTICOSA	KNIGHT
ATTIKA	CHELAN	FUGENZO	KORDIA
AUGUST-SUPREME	CHINOOK	FUKUBANA	KRASSA-SEVERA
AUTUMNALIS	CHOISY	GALAXY	KRISTIN
AUTUMNALIS-ROSEA	CLEVELAND	GEORGE-GLASS	KRONIO
AVIUM-GRANDIFLORA	CLUSTER	GIANT-HEDELFINGER	KUSAR
BADA	COB	GIL-PECK	LAMBERT
BADACSONY	COE	GILBERT	LAMBUSH
BALATON	COLT	GIOKO	LAMIDA
BALDWIN	COMPACT-STELLA	GISELA-11	LAPINS
BANGANDY	CORONATION	GISELA-5	LARGE-MONTMORENCY
BAUMANN-MAY	CORUM	GISELA-6	LARIAN
BEDFORD	CRAIGHEAD-EARLY	GISELA-7	LATE-DUKE
BELL-MONTMORENCY	CRISTIMAR	GISELA-8	LATE-KENTISH
BERRYESSA	CRISTOBALINA	GLACIER	LEWIS-SEEDLING
BESSARABIAN	DAIKOKU	GLANDULOSA-SINENSIS	LITHAUER
BIGARREAU	DAMIL	GRANDIFLORA	LIVENSKAYA
BIGARREAU-PELISSIER	DELTA	GROUND-CHERRY	LOUIS-PHILIPPE
BIGARREAU-TWYFORD	DIKEMAN	HARTLAND	LUTOVKA
BING	DOUBLE-GLASS	HEDELFINGEN	LYONS
BING-D'ANDY	DOUBLE-NATTE	HERZKIRSCHWEICHSEL	MAACKII
BLACK-DOUGLAS	DOWNER	HILDESHEIM	MACMAR
BLACK-FLAME	DWARF-SIBERIAN	HISAKURA	MAGAR-GARNET
BLACK-GUIGNE	DWARFRICH	HOKUSAI	MAGDA
BLACK-HAWK	DYEHOUSE	HONEY-HEART	MAGNIFIQUE
BLACK-HEART	EAGLE	HORINJI	MAHALEB
BLACK-REPUBLICAN	EAGLE-SEEDLING	HUDSON	MAHALEB-900
BLACK-RUSSIAN	EARLY-BIRD	HUPEHENSIS	MAKSMORFIKAJA
BLACK-SOUR	EARLY-BURLAT	ICHIYO	MASTERPIECE
BLACK-TARTARIAN	EARLY-EAGLE	IDA	MAY-DUKE
BLACKGOLD	EARLY-LYONS	IMOSE	MAYNARD
BLEEDING-HEART	EARLY-MAY	INCISA	MAZZARD
BOURGUEIL	EARLY-MORELLO	INDEX	McCLAIN
BRASSINGTON	EARLY-PURPLE	INMIL	MERCER
BROOKS	EARLY-RICHMOND	ISABELLA	MERCHANT
BRUSSELER-BRAUNE	EARLY-RIVER	IVENSII	MERLA
BUNTE-AMARELLE	EARLY-RUBY	JEFFREY-DUKE	MERMAT
BURBANK-BLACK-GIANT	EBONY	JI-12526	MERPET
BURGDORF	ELISA	JI11247	MERTON-BIGARREAU
BUSH-TARTARIAN	ELKHORN	JI11610	MERTON-BOUNTY
BUSHKAJA	ELTON	JO-NIOI	MERTON-CRANE
CALIFORNIA-ADVANCE	EMPEROR-FRANCIS	JORDAN	MERTON-FAVOURITE



MERTON-GLORY	RANSOM	SUE	WOEHRMAN-RED-GIANT
MERTON-HEART	REGENT	SUMMIT	WOOD
MERTON-LATE	REGINA	SUNBURST	YEA-MURASAKI-ZAKURA
MERTON-MARVEL	REIDLER	SUPREME	YEDO-ZAKURA
MERTON-PREMIER	REINE-HORTENSE	SUREFIRE	YEDOENSIS
MERTON-REWARD	REPUBLICAN	SUREFIRE	YELLOW-SPANISH
MESABI	RHEXII	SWEET-ANN	
METEOR	RICHMORENCY	SWEET-SEPTEMBER	
MEZEL	RIVAL	SYLVIA	Nectarines
MIKURUMA-GAESHI	ROCKPORT	TAI-HAKU	
MONA	RONS	TAKASAGO	AMBRA
MONTEARLY	ROSEA	TAKI-NIOI	APACHE
MONTLATE	ROYAL-DUKE	TAOYOMA-ZAKURA	APRIL-GLO
MONTMORENCY	ROYALTON	TAYLOR	ARCTIC-GLO
MORA-DI-VIGNOLA	SALMO	TECHLOVAN	ARCTIC-KING
MOREAU	SAM	TIMME	ARCTIC-PRIDE
MOSS-EARLY	SANGUINETTI	TOUSSAINT	ARCTIC-QUEEN
MOUNT-FUJI	SARGENTII	TULARE	ARCTIC-ROSE
MUSSELMAN	SCHAUENBERGER	UKON	ARCTIC-SNOW
MxM-2	SCHMIDT	ULSTER	ARMKING
MxM-46	SCHMIDT'S-BIGARREAU	UNARK	ARMQUEEN
MxM-60	SCIUTTI-TARTARIAN	UNEMIKO	ARMRED
NAPOLEON	SEMPERFLORENS	UTAH-GIANT	AUGUST-GLO
NOBLE	SENECA	VALERA	AUGUST-PEARL
NOIR-DE-GUBEN	SERRULA	VAN	AUGUST-RED
NOIRE-DE-MECHED	SERRULATA-SPONTANEA	VANDA	AURELIO-GRAND
NORTHSTAR	SHAJAKU	VEGA	AUTUMN-DELIGHT
NOT-NAMED	SHIMIDSU-SAKURA	VELVET	AUTUMN-FREE
NOUVELLE-ROYALE	SHIROFUGAN	VENUS	AUTUMN-GRAND
OJOCHIN	SHOSAR	VERNON	AUTUMN-RED
OKAME	SIR-DON	VIC	AVILARA-SORTILEGE
OLIVER	SIR-TOM	VICTOR	BIG-JIM
OLIVET	SKLANKA	VISCOUNT	BIG-JUAN
OLYMPUS	SODUS	VISTA	BIG-TOP
OREGON	SOMERSET	VITTORIA	BOB-GRAND
OSTHEIM	SPALDING	VIVA	BRANCA
OX-HEART	SPARHAWK	VLADIMIR	BRENDAVILHA
PANDORA	SPARKLE	VOGUE	BRIGHT-PEARL
PARKHILL	SPATE-AMARELLE	WASHI-NO-O	BY77N738
PAUL-ROSE	SS-MONTMORENCY	WATERERI	BY79N1010
PEERLESS	ST-MARGARET	WATERLOO	BY79N1013
PENDULA	STAR	WEeping-CHERRY	CALDESI-2000
PENDULA-PLENA-ROSEA	STARK-ROYAL-PURPLE	WEIROOT-10	CALDESI-2010
PENDULA-RUBRA	STARKING-HARDY-GIANT	WEIROOT-11	CALDESI-2020
PERPENDENS	STARKRIMSON	WEIROOT-13	CALDESI-84
PINK-PERFECTION	STARKSPUR	WHITE-BIGARREAU	CALDESI-85
PMR-1	STELLA	WHITE-HEART	CARLSON
PUBESCENS	STELLATA	WILLIAMS-FAVOURITE	CAROLINA
RAINBOW-STRIFE	SUBHIRTELLA	WINDSOR	CAROLINA-RED
RAINIER	SUDA	WINTER-SUN	CASCATA



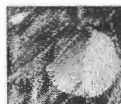
CAVALIER	FUZALODE	LE-GRAND	NEW-YORKER
CHEROKEE	FUZZLESS-BERTA	LEPRECHAUN	OLYMPIA-(K)
CHIYODARED	GARDEN-DELIGHT	LEXINGTON	OLYMPIA-(Z)
COLUMBIA	GARDEN-STATE	LIBERTY	P-R-RED
COLUMBINA	GARNET-BEAUTY	LINDA	PACIFIC-STAR
CRIMSON-BABY	GIALLA-DI-PADOVA	LIZ'S-LATE	PANAMINT
CRIMSON-GIANT	GOLD-KING	LOTUS	PINTA
CRIMSON-GOLD	GOLDEN-FREE	M2-4N	PIONEER
CRIMSON-STAR	GOLDEN-GRAND	M2-7NX	POCAHONTAS
DEL-RIO-REY	GOLDEN-PROLIFIC	MALASSA	PRECOCE-DE-ITUPEVA
DELICIOUS	GOLDENSHADE	MARIA-AURELIA	QINGUANG
DESERT-DELIGHT	GOLDMINE	MARIA-CARLA	QUEEN-GIANT
DIAMOND-BRIGHT	GRAND-DIAMOND	MARIA-EMILIA	QUEEN-RUBY
DIAMOND-JEWEL	GRAND-MELODY	MARIA-LAURA	RED-DELIGHT
DIAMOND-JIM	GRAND-PEARL	MARTHA-JANE	RED-DIAMOND
DIAMOND-RAY	GRAND-TIME	MAY-BELLE	RED-FANTASTIC
DONNARINE	GRANSUN	MAY-DIAMOND	RED-FLAME
DURBIN	GRANZEE	MAY-GRAND	RED-FRED
EARLIBLAZE	GYPZEE	MAY-JIM	RED-FREE
EARLIGLO	HARBLAZE	MAY-KIST	RED-GLEN
EARLISCARLET	HARDIRED	MAY-LION	RED-GLO
EARLY-DIAMOND	HARKO	MAY-QUEEN	RED-GRAND
EARLY-LE-GRAND	HARMONIE	MAYFAIR	RED-JEWEL
EARLY-MAYGRAND	HARVEST-SUN	MAYFIRE	RED-JIM
EARLY-RED	HI-RED	MAYGLO	RED-JUNE
EARLY-RED-JIM	HONEY-KIST	MAYRED	RED-PEARL
EARLY-SUN	HOW-RED	MERICREST	RED-SUNSET
EARLY-SUNGRAND	INDEPENDENCE	MID-GLO	RED-ZEE
EASTERN-GLO	JEWEL	MID-SILVER	REDCHIEF
ESCALINE	JOLLY-RED-GIANT	MIKE'S-GRAND	REDGOLD
FAIRLANE	JULY-RED	MIKE-GRAND	REGAL-GRAND
FANATASIA	JUNE-BELLE	MOONGRAND	REGAL-PEARL
FANTASIA	JUNE-BRITE	MORTON	RIVERZEE
FIESTA-RED	JUNE-GRAND	NECTA-ZEE	ROSE-DIAMOND
FIRE-DIAMOND	JUNE-PEARL	NECTADOR	ROSEBUD
FIRE-PEARL	JUNEGLO	NECTAGRAND-2	ROSEPRINCESS
FIRE-SWEET	JUNEGOLD	NECTAGRAND-4	ROSSANA
FIREBRITE	JUNEPRINCESS	NECTARED-1	ROYAL-GIANT
FIREGLOBE	KAY-GRAND	NECTARED-10	ROYAL-GLO
FLAME-GLO	KAY-PEARL	NECTARED-2	ROYAL-GLO
FLAME-RED	KAYGOLD	NECTARED-3	ROYAL-GRAND
FLAMEKIST	KENT-GRAND	NECTARED-4	RUBY-DIAMOND
FLAMING-GOLD	KISM-GRAND	NECTARED-5	RUBY-GEM
FLAMING-RED	KRASVYNOS	NECTARED-6	RUBY-GOLD
FLAVORTOP	LAFAYETTE	NECTARED-7	RUBY-PEARL
FLAVOUR-GIANT	LARA	NECTARED-8	SANTA-MARIA
FRANCESCO	LATE-LE-GRAND	NECTARED-9	SCARLET-QUEEN
FREEDOM	LATE-RED-GRAND	NECTARINA	SCARLET-RED
FRESNO-SUN	LATE-RED-JIM	NECTAROSE	SELECTION 37G868
FUZADOR	LATE-RED-JIM-II	NECTOUGH	SEPTEMBER-FREE



SEPTEMBER-GRAND	SUNCOAST	Plumcots	GF557
SEPTEMBER-RED	SUNDOLLAR		GF655-2
SHUHO	SUNDOWNER	BY69-1637P	GF677
SIERRA-STAR	SUNFRE	FLAVOR-DELIGHT	GF8-1
SILVER-BELLE	SUNGEM	FLAVOR-GIANT	GISELA-1
SILVER-GEM	SUNGLO	FLAVOR-KING	GISELA-10
SILVERLODE	SUNGOLD	FLAVOR-QUEEN	GISELA-11
SIRIO	SUNHOME	FLAVOR-SUPREME	GISELA-12
SNOW-QUEEN	SUNLITE	FLAVORELLA	GISELA-4
SNOWZEE	SUNMIST	ORANGE	GISELA-5
SOUTHERN-BELLE	SUNNY-RED	PURPLE	GISELA-6
SPARKLING-JUNE	SUNRAYCER	RED-VELVET	GISELA-7
SPARKLING-MAY	SUNRED	ROYAL-VELVET	GISELA-8
SPARKLING-RED	SUNRICH	RUTLAND	GOLDEN-QUEEN
SPRING-BRIGHT	SUNRIPE		GUARDIAN
SPRING-DIAMOND	SUNSNOW	Rootstocks	HAGGITH
SPRING-GRAND	SUNSPLASH		HALFORD
SPRING-RED	SUNWRIGHT	ADAFUEL	HANSEN-2168
SPRING-SWEET	SUPERSTAR	ADARA	HANSEN-536
STAR-BRIGHT	SUPREME-RED	ADARCIAS	HARROW-BLOOD
STAR-BRITE	SWANZEE	ADEMIR	HIGAMA
STARK-CRIMSON-SNOW	SWEET-MELODY	ADESOTO-101	INMIL
STARK-DELICIOUS	TASTY-GOLD	ALMOND	ISHTARA
STARK-EARLY-BIRD	TASTYFREE	APRICOT	JASPI
STARK-ENCORE	UF-QUEEN	ATLAS	JULIOR
STARK-GULF-PRIDE	VEGA	BAILEY	KINGSTON-REDLEAF
STARK-HONEY-GLO	VENUS	BOONE-COUNTY-SEEDLING	LOVELL
STARK-HONEYGOLD	WEINBURGER	BROMPTON	MAHALAB-900
STARK-LATE-GOLD	WESTERN-RED	CADAMAN	MAHALEB
STARK-OVATION	WHITE-GLORY	CAMIL	MARIANNA-2623
STARK-SUMMER-BEAUT	WHITE-PRINCESS	CENGUA-GUIA	MARIANNA-2624
STARMAY	WILSON'S-CALIFORNIA	CHARGER	MARIDON
SUMMER-BEAUT	YANGUANG	CHUI-LUM-TAO	MAZZARD
SUMMER-BLUSH	ZEE-GLO	CITATION	MAZZARD-F12/1
SUMMER-BRIGHT	ZEE-GOLD	COB	MIRABI
SUMMER-BRIGHT	ZEE-GRAND	COLT	MONTCLAR
SUMMER-DIAMOND		DAMAS	MR-S-2/5
SUMMER-FIRE		DAMAS-GF1869	MxM-14
SUMMER-GRAND		DAMIL	MxM-2
SUMMER-LION		DROPMORE	MxM-39
SUMMER-LION-THREE		DWARF-SIBERIAN	MxM-46
SUMMER-LION-TWO		ELBERTA	MxM-60
SUMMER-STAR		ERUNI	MxM-97
SUN-BONNET		FERCI-PONTALEB	MYRAN
SUN-DIAMOND		FLORDAGUARD	MYROBALAN-29-C
SUN-GRAND		GF305	MYROBALAN-B
SUNBLAZE		GF31	NANKING-CHERRY
SUNBOB		GF43	NEMAGUARD
SUNBURST		GF53-7	NEMARED
SUNBURST-(A)			NEMASUN



NEW-YORK-58
OCR-2
OCR-3
OHATSUMMO
OKINAWA
OPPENHEIM
PISA
PIXY
REDRAN
RUBIRA
RUTGERS-GREENLEAF
RUTGERS-REDLEAF
S-37
SHALIL
SIBERIAN-C
SIRIO
ST-JULIAN-X
ST-JULIEN-NO1
ST-JULIEN-NO2
STOCKTON-MORELLO
TITAN
TZIM-PEE-TAO
VIKING
VLADIMIR
WEIROOT-10
WEIROOT-11
WEIROOT-13



APENDIX 3. Conferences, Displays, Presentations, Extension Articles and Newspapers

Conference Papers

- Russell, D. M. and Topp, B. L. 1998, **Do You Know Your Stonefruit Varieties?**- a computer program to aid in varietal selection. Technical Day Update, November 3, Perth, 1998
- Russell, D. M. and Topp, B. L. 1997. **Identifying stonefruit varieties for Your Market** - a computer program for varietal identification. Proceedings. 3rd NFSFI Conference, Swan Hill 22-25 July 1997, pp 129-133.
- Russell, D. M. and Topp, B. L. 1997. **Using technology to choose the right stonefruit variety** - a hypertext database of stonefruit cultivars. Conference Proceedings ANFIC '97, Stepping into the future, Penrith, NSW, 30 April 2 May, 1997. pp 37-39.

Displays

- 1st Australian Fresh Stonefruit Growers Association, Orange, NSW, 25th and 26th May, 1995.
- EXPO 14 University of Queensland, Gatton Campus, Lawes, May, 1996.
- 2nd National Stonefruit Conference, Renmark, SA, 13th-15th August, 1996.
- 3rd National Stonefruit Industry Conference, Swan Hill, VIC, 22nd - 25th July, 1997.
- EXPO 15 University of Queensland, Gatton Campus, Lawes, May 1998. (Plate 1)
- 4th National Stonefruit Industry Conference, Ballina, Northern Rivers, NSW, 10th - 14th August, 1998. (Plate 2)
- Permanent display at the Applethorpe Research Station Client Service Centre.
- North Coast Stonefruit Growers Association Filed Day, 15th February, 1999.

Presentations

- Presentation to Severnlea Local Producers Association, October, 1995.
- Staff seminar at the Applethorpe Research Station, March, 1997.
- Staff seminar at the Applethorpe Research Station, August, 1998.
- ABC radio interview at Ballina conference, 11 August, 1998.
- Presentation to the Queensland Horticulture Institute Board, December, 1998.

Extension Articles

- Russell, D. M. 1996. Stonefruit database is user friendly. Good Fruit and Vegetables, November 1996, p29.
- Topp, B. and Russell, D. 1996. US peach and nectarine varieties set for import. Good Fruit and Vegetables, July 1996, p 40.



Russell, D. and Topp, B. 1996. A new database on stonefruit cultivars. Horticulture Highlights, No. 5, p. 19.

Topp, B. and Russell, D. 1996. New peach and nectarine varieties from California. Horticulture Highlights, No. 5, p. 19.

Russell, D., Topp, B. and Banks, A. 1995. Plum ripening sequence chart. Horticulture Highlights, No.4, p5.

Topp, B. and Russell, D. 1995. Yumeong peach. Horticulture Highlights, No.3, p 6.

Newspaper Distribution List

The distribution list for the copy and photo, is as follows:

- | | |
|--|---|
| Stanthorpe Border Post | The Australian |
| Toowoomba Chronicle | The West Australian |
| Gatton Lockyer Valley Star | ABC Radio |
| Western Star | Australian Financial Review |
| Toowoomba Advertiser | Adelaide Advertiser |
| Northern Star (Lismore) | Warren-Blackwood Times (Bunbury WA) |
| South Burnett Times (Kingaroy) | Bunbury Mail (WA) |
| Warwick Daily News | South Western Times (Bunbury WA) |
| Good Fruit and Vegetables | The Cobram Courier (Vic) |
| Queensland Fruit and Vegetable News | Donnybrook Bridgetown Mail (Collie WA) |
| The Land | Kyabram Free Press (Vic) |
| Queensland Country Life | Northern Rivers Echo (Lismore) |
| Man on the Land section, Gympie Times | The Loxton News (SA) |
| Town and Country (Wide Bay) | Midland Reporter Community (Midland WA) |
| Queensland Small Farms | Sunraysia Daily (Mildura Vic) |
| Independent Rural Publishers (Acres Australia) | Hills Gazette (Mundaring WA) |
| Bush Telegraph (Sunshine Coast) | Murray Pioneer (Renamrk SA) |
| Courier Mail | Shepparton Advertiser (Vic) |
| Hobart Mercury | North Eastern Farmer (Wangaratta Vic) |

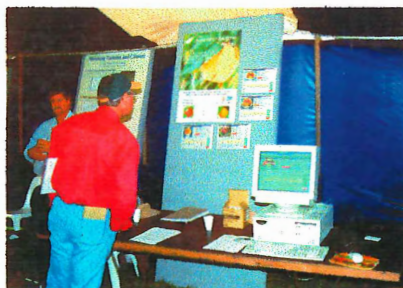


Plate 1. Display at the ASFSGA conference, Ballina, 1998



Plate 2. Display at the 15th Gatton EXPO, May, 1998.



LITERATURE CITED

- American Society of Horticultural Science, 1997, **The Brooks and Olmo Register of Fruit and Nut Varieties, third edition.** ASHS Press, Alexandria.
- Brooks, R.M. and Olmo, H.P., 1972, **Register of new fruit and nut varieties 2nd edition.** University of California Press Ltd., Berkeley.
- Della Strada, G. Fideghelli C., Liverani A., Monastra L. and Rivalta L., 1984, **Monografia di cultivar di pesco da consumo fresco.** Volumes I and II. Istituto Sperimentale per la Frutticoltura, Roma.(Italian)
- Hedrick, U.P., 1911, **Plums of New York** - report of the New York Agricultural Experiment Station. J.B. Lyon Co., Albany.
- Hedrick, U.P., 1915, **Cherries of New York** - report of the New York Agricultural Experiment Station. J.B. Lyon Co., Albany.
- Hedrick, U.P., 1917, **Peaches of New York** - report of the New York Agricultural Experiment Station. J.B. Lyon Co., Albany.
- Loreti, F. and Fiorino, P. 1973, **Monografia Delle Principali Cultivar Di Nettarine.** Pisa. (Italian)
- Okie, W.R. 1998, **"Handbook of Peach and Nectarine Varieties"**. Performance in the Southeastern United States and Index of Names. United States Department of Agriculture, Agricultural Research Service, Agriculture Handbook number 714
- Okie, W. R., 1993, **"Peach and Nectarine Varieties" South Eastern Performance and Master Index.** A computer program on performance of Peaches and Nectarines in Georgia, USA.
- Okie, W. R., 1993, **"Peach and Nectarine Varieties" - A Hypertext Index.** HortScience, 28(12):1186 - 1187.
- Taylor, H.V. 1949, **The Plums of England.** Richard Cray and Co., Ltd., Bungay, Suffolk.

