

Shedding Light on the Microbial Community of the Macropod Foregut Using 454-Amplicon Pyrosequencing

Lisa-Maree Gulino^{1,3*}, Diane Ouwkerk^{1,3}, Alicia Y. H. Kang¹, Anita J. Maguire¹, Marco Kienzle¹, Athol V. Klieve^{2,3}

1 Rumen Ecology Unit, Department of Agriculture, Forestry and Fisheries, Queensland, Dutton Park, Queensland, Australia, **2** School of Agriculture and Food Sciences, University of Queensland, Gatton, Queensland, Australia, **3** Centre for Animal Science, Queensland Alliance for Agriculture and Food Innovation, St. Lucia, Queensland, Australia

Abstract

Twenty macropods from five locations in Queensland, Australia, grazing on a variety of native pastures were surveyed and the bacterial community of the foregut was examined using 454-amplicon pyrosequencing. Specifically, the V3/V4 region of 16S rRNA gene was examined. A total of 5040 OTUs were identified in the data set (post filtering). Thirty-two OTUs were identified as 'shared' OTUS (i.e. present in all samples) belonging to either Firmicutes or Bacteroidetes (Clostridiales/Bacteroidales). These phyla predominated the general microbial community in all macropods. Genera represented within the shared OTUs included: unclassified Ruminococcaceae, unclassified Lachnospiraceae, unclassified Clostridiales, *Peptococcus* sp., *Coprococcus* spp., *Streptococcus* spp., *Blautia* sp., *Ruminococcus* sp., *Eubacterium* sp., *Dorea* sp., *Oscillospira* sp. and *Butyrivibrio* sp. The composition of the bacterial community of the foregut samples of each the host species (*Macropus rufus*, *Macropus giganteus* and *Macropus robustus*) was significantly different allowing differentiation between the host species based on alpha and beta diversity measures. Specifically, eleven dominant OTUs that separated the three host species were identified and classified as: unclassified Ruminococcaceae, unclassified Bacteroidales, *Prevotella* spp. and a *Syntrophococcus sucromutans*. Putative reductive acetogens and fibrolytic bacteria were also identified in samples. Future work will investigate the presence and role of fibrolytics and acetogens in these ecosystems. Ideally, the isolation and characterization of these organisms will be used for enhanced feed efficiency in cattle, methane mitigation and potentially for other industries such as the biofuel industry.

Citation: Gulino L-M, Ouwkerk D, Kang AYH, Maguire AJ, Kienzle M, et al. (2013) Shedding Light on the Microbial Community of the Macropod Foregut Using 454-Amplicon Pyrosequencing. PLoS ONE 8(4): e61463. doi:10.1371/journal.pone.0061463

Editor: Vishal Shah, Dowling College, United States of America

Received: February 11, 2013; **Accepted:** March 12, 2013; **Published:** April 23, 2013

Copyright: © 2013 Gulino et al. This is an open-access article distributed under the terms of the Creative Commons Attribution License, which permits unrestricted use, distribution, and reproduction in any medium, provided the original author and source are credited.

Funding: The work was funded by the Department of Agriculture, Fisheries and Forestry, Queensland as part of the Queensland Enteric Methane Hub project (<http://www.industry.qld.gov.au/key-industries/839.htm>). The funders had no role in study design, data collection and analysis, decision to publish, preparation of the manuscript.

Competing Interests: The authors have declared that no competing interests exist.

* E-mail: Lisa-Maree.Gulino@daff.qld.gov.au

Introduction

Macropods are marsupials belonging to the family Macropodidae that includes kangaroos and wallabies. Macropods are herbivorous and can be divided into grazers (feed on perennial native grasses/sedges), browsers (feed on small shrubs) and mixed feeders (both grazers and browsers). The stomachs of grazing macropods have an enlarged forestomach region, the sacciform and tubiform, where microbial fermentation of ingested plant material takes place and the hind-stomach, which secretes hydrochloric acid and pepsinogen [1]. In common with other foregut fermenting herbivores, the sacciform and tubiform regions possess a consortium of microbes that are involved in enteric fermentation [2,3]. Although there are many similarities between macropod foregut microbial fermentation and fermentation in the rumen of ruminants, e.g. sheep and cattle, it has been demonstrated that there are significant differences in the digesta flow and digestion/absorption patterns [1]. It has been proposed that differences in digestion may occur due to physiological differences in the gut structure and the process of selection may have an effect on the microbial population [1].

Very few studies have examined the bacterial community of the macropod foregut. Dellow et al. [3] enumerated foregut bacteria in wild *Macropus giganteus* (Eastern grey kangaroo) and *Thylogale thetis* (Red-necked pademelon) and captive *T. thetis* and *Macropus eugenii* (Tammar wallaby) macropods but did not attempt to characterise the organisms present. Most studies involving taxonomic classifications of bacteria present in the macropod foregut have focused on those that can be cultured in the laboratory [4] and/or those involved in reductive acetogenesis [5,6]. Macropods produce significantly less methane (or no methane) than cattle [7,8] and this appears to be due, at least in part, to the dominance of reductive acetogenesis in these animals [5]. Therefore the identification and isolation of reductive acetogens has been explored in terms of a potential methane mitigation strategy to reduce emissions from domestic ruminants (sheep and cattle).

Use of conventional molecular technologies, such as clone libraries and microarrays, to attempt to unravel complex microbial ecosystems, like those found in the foregut of herbivores, is time consuming, costly and can lack sensitivity only identifying dominant bacterial populations. Developments in high throughput

pyrosequencing, specifically targeted gene sequencing, provides a means of overcoming these limitations enabling the in depth analysis of complex microbial ecosystems [9]. Several studies have utilized 454-amplicon pyrosequencing to examine the microbial communities present in herbivorous foregut fermenters such as cattle, sheep, and hoatzin [10,11,12]. Very little molecular work however, has been performed on the macropod foregut microbial communities and the importance that this microbiome may have in mitigating greenhouse gas emissions and improving the efficiency of fermentation of poor quality grasses. Pope et al. [13] has examined the foregut bacterial community (specifically using the 16S rRNA gene and cloning/Sanger sequencing) of Tamar wallabies (*Macropus eugenii*). A single paper by Muegge et al. [14] has used 454-amplicon pyrosequencing to examine the faecal microbial communities in a range of mammals, which included a captive *M. rufus* sample which grouped with other herbivorous foregut fermenters (gazelle, springbok, giraffe, sheep and okapi - [14]). With so little being known and understood of the bacterial populations that normally inhabit the foregut of macropods, this study used 454-amplicon pyrosequencing to examine the bacterial communities in the foregut of 20 wild large grazing macropods from Queensland, Australia. In addition to examining the bacterial diversity that exists in macropod forestomach contents the variability within these ecosystems in relation to geographical location, diet and host species were also examined.

Materials and Methods

Samples and Sample Preparation

Samples consisted of archival DNA extracted from forestomach content samples obtained from twenty wild macropods including *Macropus giganteus*, *Macropus rufus* and *Macropus robustus*, collected from five locations across Queensland in 2007. The sampling locations were chosen based on the dominant native pasture present within that region; the location, dominant pasture species, and number and species of kangaroo collected from are contained in Table 1. Samples were collected under the Queensland Parks and Wildlife Scientific Purposes Permit number WO/001397/00/SSA. As macropod samples were from a 'wild' population and were collected as part of a national cull, animal ethics approval was not required, however, work was conducted and complied as per conditions governed in the permit (WO/001397/00/SSA). Original sample collection details, storage and DNA extraction protocols were as described previously [5,15]. Briefly, foregut fluid samples were collected (approximately 5–15 g) and a 1 ml aliquot of foregut fluid was placed into a clean eppendorf tube and stored on ice until transfer to the laboratory. Aliquots were then centrifuged at 13,200 rpm for 10 minutes and the pellet retained and stored at -20°C until ready for DNA extraction. DNA was extracted from the pelleted sample; all samples were extracted within one week of each other, and DNA was stored at -20°C . DNA concentrations were calculated using the Nanodrop 8000 Spectrophotometer (Thermoscientific, Australia) as per manufacturer's instructions. Samples were diluted with dH_2O to a final concentration of 10 ng/ μL and used as template in subsequent barcoded PCR.

Barcoded PCR and 454-amplicon Pyrosequencing

Samples for 454-amplicon pyrosequencing were amplified in triplicate, using a barcoded universal 16S rRNA gene (variable regions V3/V4) forward 341F (5' Adapter A - Barcode - TACGGGAGGCAGCAG - 3' (Life Sciences, 2009, [16]) and reverse 787R (5' Adapter B - CTACCAGGGTATCTAAT - 3' modified from [17] primer pairs. PCR mixtures were prepared to

a final volume of 50 μL with the following reagents and final concentrations: 1 Unit of Phusion polymerase (Finnzymes, Australia); 250 mM of (each) forward and reverse primers; 200 nM dNTP mix (Roche, Australia); 1 X's HF Phusion Buffer and 20 ng of template DNA. Thermocycling was performed in an eppendorf mastercycler (Eppendorf, Australia) using the following conditions: - lid preheated to 101°C ; initial denaturation 98°C for 30 sec; followed by 30 cycles of: 98°C , 10 sec; 65°C , 20 sec; 72°C , 15 sec; followed by a final extension step at 72°C , 10 min and a 'cooling' step at 12°C , 5 min. Products were visualised on a 2% agarose gel post stained with 3 Xs gel red (Jomar Scientific, Australia). Amplicons of correct size (approximately 520 bp) were excised using GelX 6.5 excision tips (Clever Scientific, UK) and purified using the QIAquick gel extraction kit (QIAGEN, Australia) as per manufacturer's instructions, with a modification to the final elution step, eluting the product in 30 μL instead of the recommended 50 μL . Purified PCR product was quantified using the Qubit fluorometer (Invitrogen, Australia) as per manufacturer's instructions. Approximately 300 ng of purified PCR product for each of the 20 samples was sent to the Australian Genome Research Facility (AGRF) for 454-amplicon pyrosequencing.

Pyrotag Handling and Analysis

Accurate quantification of the barcoded amplicons using BioAnalyzer, pooling and library preparation (including emulsion PCR using Titanium chemistry) and 454-amplicon pyrosequencing was performed by AGRF. Data was processed using Roche Newbler Software (version 2.5.3, Roche) and returned as raw data in a standard flowgram file (.sff) format. Raw data (.sff) was converted to .fasta and .qual files using mothur [18] and denoised using Acacia software [19]. Denoised sequences and metadata were submitted to MG-RAST (<http://metagenomics.anl.gov>) and are stored under project name 'QEMH' - record numbers for each amplicon library are: 4513090.3 (WD15), 4513089.3 (WD14), 4513083.3 (RD12), 4513085.3 (RD25), 4513082.3 (RB24), 451309.1 (WD23), 4513081.3 (RB22), 4513073.3 (GB11), 4513086.3 (WB21), 4513080.3 (RB20), 4513084.3 (RD19), 4513077.3 (GD17), 4513076.3 (GD10), 4513087.3 (WB38), 4513075.3 (GB35), 4513079.3 (GD32), 4513088.3 (WB9), 4513074.3 (GB31) and 4513078.3 (GD30). Denoised sequences were analysed using the Quantitative Insights Into Microbial Ecology (QIIME) pipeline software (version 1.5.0) [20]. Specifically, sequences were deconvoluted into individual samples based on their barcodes and simultaneously filtered to remove poor/low quality sequences. Sequences with a quality value of less than 25 were discarded, across a sliding window of 50bp, and sequences between 430bp–470bp in length were retained. Sequences from samples were clustered using Uclust into Operational Taxonomic Units (OTUs) based on 97% sequence similarity and the most abundant sequence within an OTU was chosen as the OTU's representative sequence. The representative sequences were then aligned against the 16S rRNA Greengenes core set ([21] - <http://greengenes.lbl.gov/>) using PyNAST [20]. Representative sequences were taxonomically classified using the Ribosomal Database Project (RDP) classifier [22] from the Phylum to the Genus level, using Greengenes Taxonomy. An OTU table was constructed; chimeras identified using Chimera Slayer [23] and removed from the OTU table (as were low confidence singletons - single sequences that occurred in less than two samples). A representative OTU phylogenetic tree and taxonomic summary from Phylum to Genus level were constructed using the QIIME built-in scripts including the fasttree method for tree construction. Alpha diversity indices (Shannon-Weiner, Phylogenetic Distance, equitability and number of observed species) were calculated at

Table 1. Macropod forestomach samples: host, pasture and location details.

Sample name	Abbreviation	Species	Sex	Predominant pasture common name (species name)	Abbreviation	Location	Abbreviation
Walleroo Buck 9	WB9	<i>Macropus robustus</i>	Male	Mitchell grass (<i>Astrebla</i> spp.)	MG	Charleville	Ch
Grey Doe 10	GD10	<i>Macropus giganteus</i>	Female	Mitchell grass (<i>Astrebla</i> spp.)	MG	Charleville	Ch
Grey Buck 11	GB11	<i>Macropus giganteus</i>	Male	Mitchell grass (<i>Astrebla</i> spp.)	MG	Charleville	Ch
Red Doe 12	RD12	<i>Macropus rufus</i>	Female	Mitchell grass (<i>Astrebla</i> spp.)	MG	Charleville	Ch
Walleroo Doe 14	WD14	<i>Macropus robustus</i>	Female	Mitchell grass (<i>Astrebla</i> spp.)	MG	Charleville	Ch
Walleroo Doe 15	WD15	<i>Macropus robustus</i>	Female	Mitchell grass (<i>Astrebla</i> spp.)	MG	Longreach	Lr
Grey Doe 17	GD17	<i>Macropus giganteus</i>	Female	Mitchell grass (<i>Astrebla</i> spp.)	MG	Longreach	Lr
Red Doe 19	RD19	<i>Macropus rufus</i>	Female	Mitchell grass (<i>Astrebla</i> spp.)	MG	Longreach	Lr
Red Buck 20	RB20	<i>Macropus rufus</i>	Male	Mitchell grass (<i>Astrebla</i> spp.)	MG	Longreach	Lr
Walleroo Buck 21	WB21	<i>Macropus robustus</i>	Male	Spinifex (<i>Spinifex</i> spp.)	Spin	Cloncurry	Cl
Red Buck 22	RB22	<i>Macropus rufus</i>	Male	Spinifex (<i>Spinifex</i> spp.)	Spin	Cloncurry	Cl
Walleroo Doe 23	WD23	<i>Macropus robustus</i>	Female	Spinifex (<i>Spinifex</i> spp.)	Spin	Cloncurry	Cl
Red Buck 24	RB24	<i>Macropus rufus</i>	Male	Spinifex (<i>Spinifex</i> spp.)	Spin	Cloncurry	Cl
Red Doe 25	RD25	<i>Macropus rufus</i>	Female	Spinifex (<i>Spinifex</i> spp.)	Spin	Cloncurry	Cl
Grey Doe 30	GD30	<i>Macropus giganteus</i>	Female	Black Speargrass (<i>Heteropogon contortus</i>)	Bck	Charters Towers	CT
Grey Buck 31	GB31	<i>Macropus giganteus</i>	Male	Bluegrass (<i>Dicanthium sericeum</i>)	BIG	Dingo	Di
Grey Doe 32	GD32	<i>Macropus giganteus</i>	Female	Bluegrass (<i>Dicanthium sericeum</i>)	BIG	Dingo	Di
Grey Buck 35	GB35	<i>Macropus giganteus</i>	Male	Bluegrass (<i>Dicanthium sericeum</i>)	BIG	Dingo	Di
Walleroo Doe 37	WD37	<i>Macropus robustus</i>	Female	Bluegrass (<i>Dicanthium sericeum</i>)	BIG	Dingo	Di
Walleroo Buck 38	WB38	<i>Macropus robustus</i>	Male	Bluegrass (<i>Dicanthium sericeum</i>)	BIG	Dingo	Di

doi:10.1371/journal.pone.0061463.t001

a sequence depth of 8,700 sequences as the nearest number (in multiples of 100) to the minimum number of sequences for a sample (8,747). Beta diversity measures (PCoA) were also calculated using unweighted and weighted UniFRAC distances at a depth of 8700 sequences.

Data Analysis Using R/RStudio

The data was analysed in RStudio: integrated development environment for R Version 0.96.122 (<http://www.rstudio.org>). Heatmaps were generated using the package “gplots” and the heatmap.2 function of OTU abundance tables (e.g. raw number of sequences/total number of sequences for a sample, x 100) of shared OTUs, i.e. OTUs that were present in all samples. A transformation-based Principal Components Analysis (tb-PCA) [24] using the Hellinger distance was used to ordinate the 20 samples according to OTU abundance data. This dataset contains more than 5,000 OTUs (>5,000 OTUs), which is difficult to represent graphically in a meaningful way. Therefore only the OTUs for which variation of abundance contributed most to the clustering obtained from the tb-PCA were selected and represented in the tb-PCA. The OTUs were identified using the largest contributors, representing the top 0.01% of OTUs, to the first two principal components as selection criteria.

Results

Sampling Depth, Coverage and Alpha Diversity

A total of 350,438 sequences remained post-filtering including chimera and low confidence singleton removal and 5,040 OTUs were identified at the 97% similarity level. Sequence number per sample ranged from 8,747 sequences (WD23) to 26,171 sequences

(WD14) with a mean of $17,521 \pm 4,666$ (mean \pm SD; $N=20$) sequences per sample (Table S1). Rarefaction was performed at the OTU level, and rarefaction curves demonstrated firstly: diversity differed between individual samples (no. OTUs observed), and secondly: the majority of bacterial diversity (OTUs) was not uncovered, as many of the plots were not close to becoming asymptotic (Figure 1). Alpha diversity measures (Phylogenetic Distance (PD); Shannon-Wiener index (Shannon); equitability/evenness; Simpson index; number of OTUs observed) are presented for each host species in Table 2.

Alpha diversity measures indicated that *M. rufus* forestomach samples had significantly higher bacterial diversity than the other host species according to: PD and number of OTUs (Table 2). Conversely, the forestomach samples from *M. robustus* were the least diverse of the host species according to the same measures (Table 2). The equitability index and Simpson index did not differ significantly between the host species.

Taxonomy of the Bacteria Present in the Macropod Foregut

Ten phyla were identified and, listing them in descending order of mean abundance for all samples, were: – Bacteroidetes (48.3% \pm 9.19), Firmicutes (47.3% \pm 9.85), Proteobacteria (1.0% \pm 1.21), Fibrobacteres (1.0% \pm 1.19), Fusobacteria (0.9% \pm 1.28), Actinobacteria (0.6% \pm 0.367), Spirochaetes (0.4% \pm 0.334), and (Other –0.4% \pm 0.229 – composed of OTUs that could not be classified at the Phylum level), Tenericutes (0.1% \pm 0.111) and SR1 (<0.1% \pm 0.002). Table 3 displays the average Phyla levels for each macropod species. At deeper taxonomic levels, 20 classes, 36 families, 57 genera and 5,040 OTUs were identified. The phyla Fibrobacteres, Fusobacteria, ‘Other’ phylum and SR1 were each

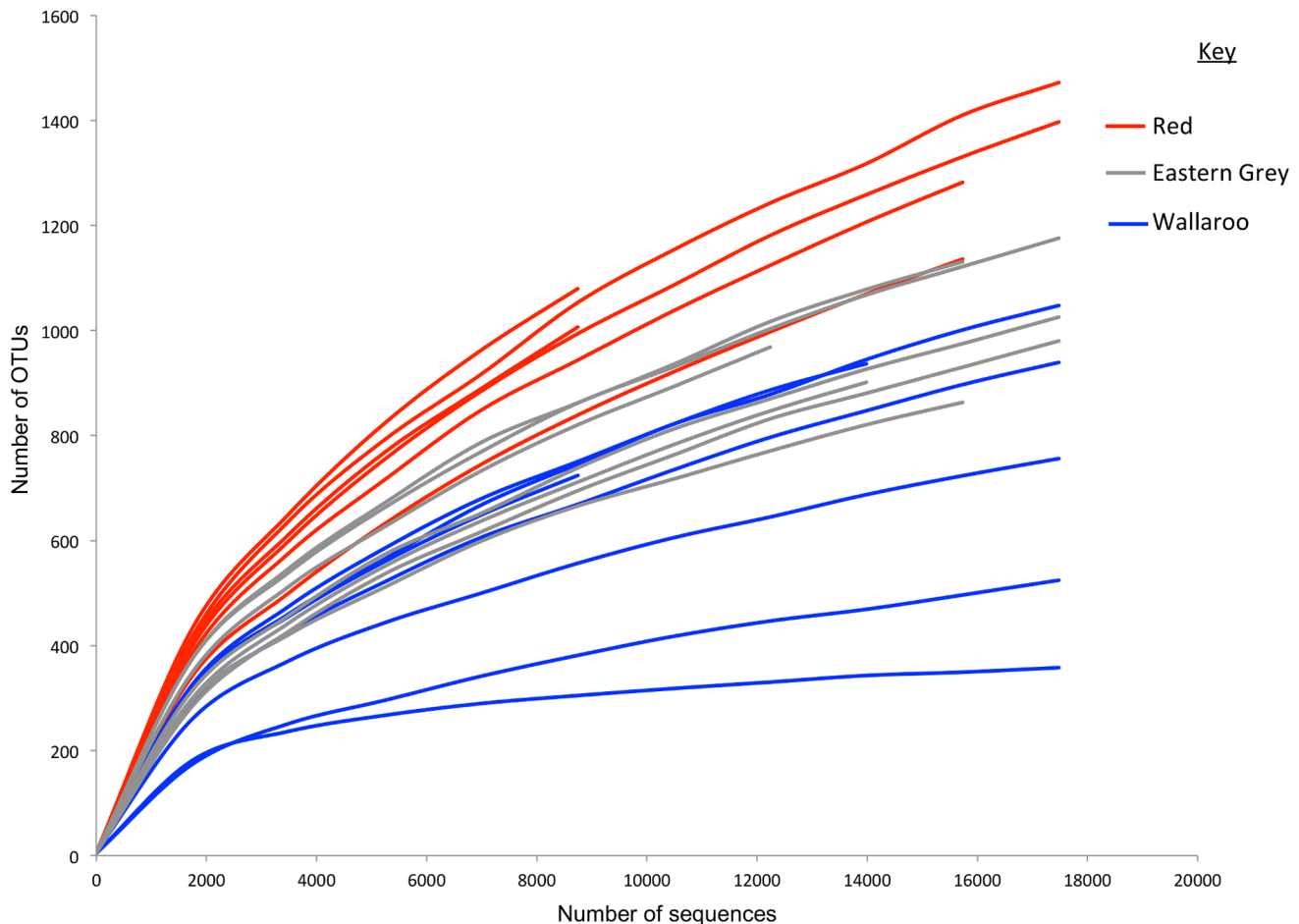


Figure 1. Rarefaction analysis of partial bacterial 16S rRNA gene sequences in macropod foregut samples. Rarefaction was conducted at a genetic distance of 3%. The Red – Red Kangaroo (*Macropus rufus*); Eastern Grey – Eastern Grey Kangaroo (*Macropus giganteus*); Wallaroo – *Macropus robustus* forestomach samples are marked by the red, grey and blue colours respectively. doi:10.1371/journal.pone.0061463.g001

composed of a single class and order. Bacteroidetes, Firmicutes, Proteobacteria, Actinobacteria, Spirochaetes, and Tenericutes were composed of two or more classes. Bacteroidia and Clostridia were the two most predominant classes (48.3% \pm 9.19, 46.2% \pm 10.32 abundance respectively). Bacteroidia and Clostridia were composed of two orders Bacteroidales (48.3% \pm 9.19), Flavobacteriales (0.005% \pm 0.008); and Clostridiales (46.1% \pm 10.3), Clostridia other (0.005% \pm 0.006) respectively. As Bacteroidales and Clostridiales comprised over 90% of the total bacterial foregut community present in macropod foregut samples, families within these two predominant orders are presented in Figure 2 (A -

Clostridiales, B - Bacteroidales). Prevotellaceae (37.95% \pm 11.44) and Lachnospiraceae (25.06% \pm 7.30) were the dominant families respectively.

At 97% sequence similarity, 5,040 OTUs were identified. Of the 5,040 OTUs, 32 were present in all samples and were identified as shared OTUs (Figure 3). A single shared OTU was identified as belonging to the phylum Bacteroidetes (unclassified Bacteroidales), whereas the remaining OTUs (n = 31) were classified as Firmicutes. Within the Firmicutes, two OTUs were classified as Bacilli (*Streptococcus* spp.) and the remaining OTUs (n = 29) were classified as Clostridia. Within the Clostridia, OTUs

Table 2. Measures of alpha diversity of bacterial communities for each species of macropod forestomach samples from Queensland calculated at a depth of 8700 sequences.

Species	Phylogenetic diversity	Number of OTUs/ Observed species	Shannon	Equitability	Simpson
<i>Macropus robustus</i>	45.66 ^a	595 ^a	6.04 ^a	0.66	0.93
<i>Macropus giganteus</i>	53.04 ^b	760 ^b	6.68 ^{a, b}	0.70	0.96
<i>Macropus rufus</i>	62.3 ^c	992 ^c	7.29 ^b	0.74	0.97

Means with different subscript letter (per column) are significantly different from each other ($p \leq 0.05$) by protected LSD.

doi:10.1371/journal.pone.0061463.t002

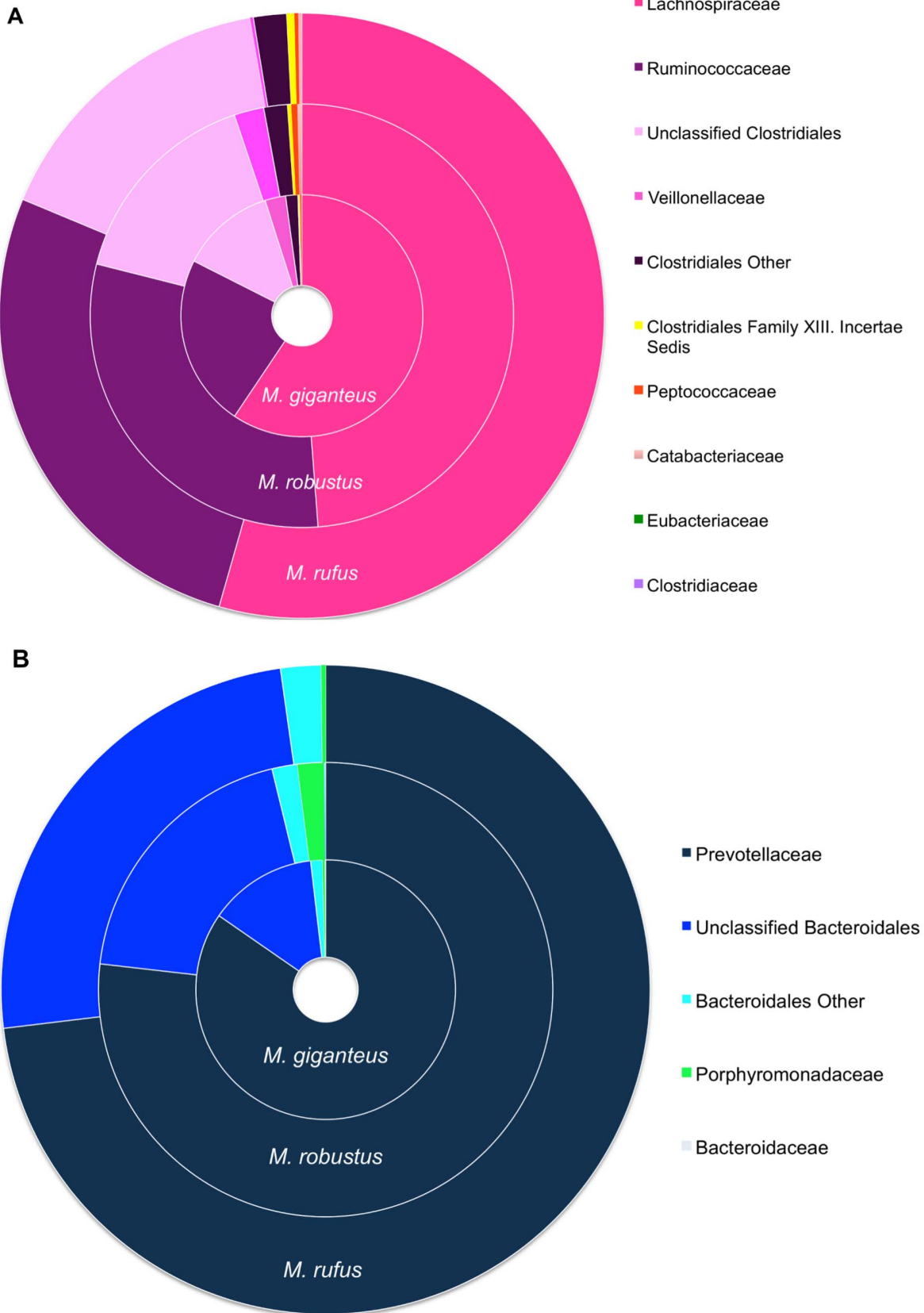


Figure 2. Percent abundance of members of: A) Clostridiales B) Bacteroidales in the foregut of macropods. The percentage abundance of A) Clostridiales B) Bacteroidales identified in the foregut of 20 Queensland macropods using 454-amplicon pyrosequencing. doi:10.1371/journal.pone.0061463.g002

Table 3. Phyla abundance of bacterial OTUs present in each macropod species.

Phylum	% of sequences					
	<i>M. giganteus</i> ±SD	<i>M. robustus</i> ±SD	<i>M. rufus</i> ±SD	<i>M. giganteus</i> ±SD	<i>M. robustus</i> ±SD	<i>M. rufus</i> ±SD
Bacteroidetes	48.05	0.090	53.76	0.085	42.26	0.072
Firmicutes	46.05	0.097	42.64	0.101	54.26	0.065
Fibrobacteres	1.53	0.016	0.27	0.003	1.11	0.010
Fusobacteria	1.45	0.014	0.67	0.016	0.44	0.004
Proteobacteria	1.37	0.013	1.29	0.014	0.20	0.001
Actinobacteria	0.66	0.006	0.54	0.003	0.73	0.001
Spirochaetes	0.45	0.002	0.36	0.004	0.36	0.004
Unclassified Bacteria	0.41	0.001	0.42	0.002	0.48	0.003
Tenericutes	0.02	0.000	0.06	0.001	0.16	0.001
SR1	≤0.00	0.000	≤0.00	0.000	≤0.00	0.000

doi:10.1371/journal.pone.0061463.t003

were either identified as unclassified Clostridia, members of Lachnospiraceae or Ruminococcaceae. OTUs that could be classified at the genus level include: *Blautia*, *Coprococcus*, *Dorea*, *Eubacterium*, *Peptococcus*, *Oscillospira* and *Ruminococcus*. Seven of the OTUs identified had significant sequence identity (>99% - NCBI BLAST nucleotide database) to bacteria and clones from macropod hosts with three OTUs related to *M. eugenii* clones, two OTUs related to *M. rufus* clones and one OTU related to a *M. giganteus* bacterial isolate (Table S2). The remainder of the OTUs had high sequence identity (≥98%) to bacterial isolates and clones from the gastrointestinal tract of various animals including: horse, sheep, pigs, mice, cattle and humans (Table S2).

Intra-sample Diversity (Beta Diversity) of the Macropod Foregut Bacterial Community

Unweighted and weighted clustering using Principal Coordinates Analysis (PCoA) of Unifrac distance matrices were performed, and labeled according to the following variables: host; location/predominant feedtype (treated as a single variable) and host/location/predominant feedtype (treated as a single variable). Unweighted PCoA demonstrated that the host species is the primary variable in the dataset (Figure 4A), as most samples tended to cluster together based on the host species. However, no clustering was evident based on the weighted PCoA of host species (4B), nor on the unweighted or weighted PCoA of feedtype/location (Figures 4C and 4D). Clustering was evident based on the unweighted PCoA of host/feedtype/location combination (Figure 4E). No clustering was apparent for the weighted PCoA by host/feedtype/location combination (Figure 4F).

Transformation based Principal Components Analysis (tb-PCA) was used to identify the variable that accounts for the most variation in groups of samples. The top 0.01% of OTUs contributing to the separation of species was identified and plotted (Figure 5). Three main clusters were observed that loosely based on host species with the exception of two *M. robustus* samples that clustered with different host species (*M. giganteus* and *M. rufus*) and a single *M. giganteus* sample that was very loosely associated with the bulk of the *M. robustus* samples. The four OTUs contributing to the separation of *M. rufus* from other species were classified as *Prevotella* spp., Bacteroidales and a *Syntrophococcus* sp. Three OTUs were identified as contributing to the separation of *M. giganteus* and

were classified as *Prevotella* sp., Ruminococcaceae (unclassified) and Bacteroidales (unclassified). Likewise, for the separation of *M. robustus*, four OTUs were identified (unclassified Bacteroidales and *Prevotella* spp.). Five of the eleven OTUs were highly homologous (≥97%) to clones from *M. eugenii* foregut. A single OTU had 98% identity to the acetogen *Syntrophococcus sucromutans* (S185) isolated from the rumen of cattle. The remaining OTUs (n=5) had identity of ≤94% to uncultured clones from a variety of herbivorous animals (rhinoceros, elephant) and an omnivore, the pig-like babirusa representing novel families (Table S3).

Discussion

Introduction

This study has revealed a diverse and complex bacterial community within the forestomach of large grazing macropods and is the first study, using 454-amplicon pyrosequencing, to comprehensively examine this specific ecosystem.

Sample Coverage

Rarefaction curves demonstrated that the sequencing depth of this study did not uncover the majority of the bacterial diversity within the kangaroo foregut. As this was the first study specifically using 454-amplicon pyrosequencing to examine macropod foregut bacterial communities, it was difficult to predetermine what was an adequate sequencing depth that enabled sufficient coverage. In analogous herbivorous foregut fermenters (e.g. sheep, cattle, gazelle, springbok) sequencing depths ranging from 1,700–20,000 sequences have been adequate for uncovering diversity [14,25,26,27]. Future work could aim to have a greater depth of sequencing to improve coverage to the level suggested (90% coverage) by Lemos et al. [28] for pyrosequencing of the 16S rRNA gene.

Gross Diversity at Phyla and Family Level

Results revealed that Firmicutes and Bacteroidetes were the dominant Phyla in all animals examined. This result is consistent with Ley et al. [29] and Pope et al. [13] where it was established that Firmicutes and Bacteroidetes were the predominant Phyla identified in *M. rufus* faeces and the *M. eugenii* foregut. It is not surprising that Firmicutes and Bacteroidetes are the predominant Phyla identified, as they have been found to dominate in many herbivorous gut systems [26,27,30]. However, the proportions reported Ley et al. [29] and Pope et al. [13] varied considerably to our findings with Firmicutes representing approximately 60% and Bacteroidetes approximately 20% in both studies. Consequently, the Firmicutes to Bacteroidetes ratio (FB ratio) that occurred in our study was close to 1:1 (varied 0.78–1.26), whilst in the aforementioned studies it was closer to 3:1. The gut FB ratio has been linked in humans to several variables including: age, obesity and diet [31,32,33]. Mariat et al. [32] discovered a low FB ratio was associated with infants (3 weeks to 10 months old) and older people (70–90 years old) as opposed to a high FB ratio, which was found adults (20–45 years old). Whereas Ley et al. [31] found that high FB ratio was associated with obese people and De Filippo et al [30] found that a higher FB ratio occurred in European children (diet consists of high animal protein and low fibre content) compared to children from Burkina Faso (low FB ratio, on a high fibre, low fat diet). It is possible that any of these variables could explain the differences in FB ratios reported in our samples, as could the host species, diet or sample type (faeces vs. gut sample). Therefore, future work could be performed to examine multiple variables and their effect on the gut FB ratios in macropods.

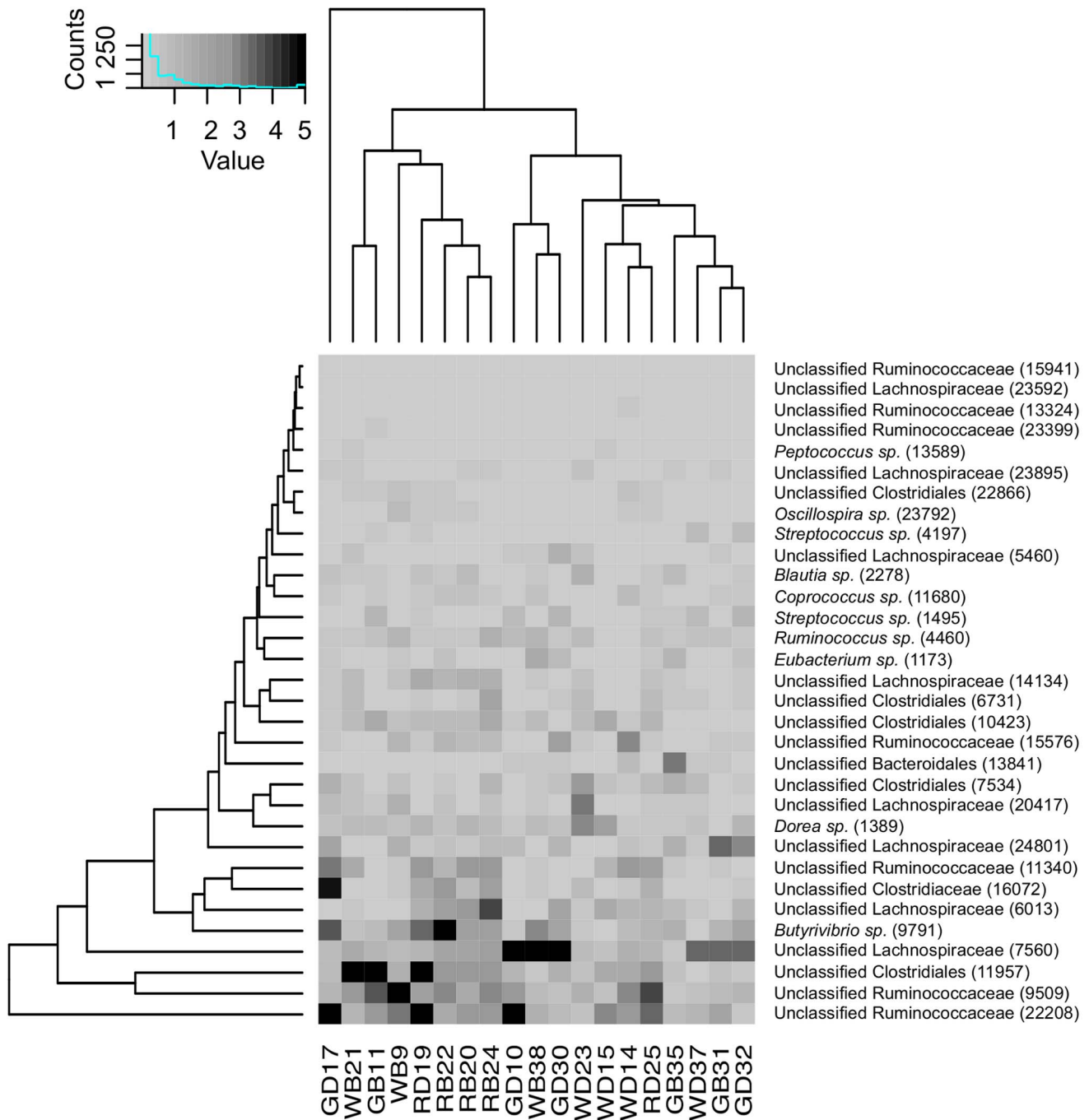


Figure 3. OTU Heatmap with double hierarchical clustering of the shared bacterial OTUs of macropod foregut. OTU Heatmap with double hierarchical clustering of the shared bacterial OTUs of macropod foregut, as determined by 454-amplicon pyrosequencing. Samples are listed along the horizontal axis of the heatmap (GD – Grey Doe; GB – Grey Buck; WD – Wallaroo Doe; WB – Wallaroo Buck; RD – Red Doe; RB – Red Buck), and OTU taxonomy and OTU number (in parentheses) along the vertical axis. Shading is graduated with darker shading indicative of OTUs present in high abundance. Of the 32 shared OTUs identified, one OTU (13841) was classified as a Bacteroidetes, the remainder were classified as Firmicutes. doi:10.1371/journal.pone.0061463.g003

At the deeper levels of Class and Order, Clostridia/Clostridiales and Bacteroidia/Bacteroidales contributed to over 85% of the total bacterial community. This result is consistent with other herbivorous fermenters including ruminants [26,34,35,36,37], Tamar wallaby [13] and Galapagos Island iguanas [29] where Bacteroidia/Clostridia were found in high abundance in all samples examined. The high abundance of Bacteroidia/Clostridia may be a common feature of herbivorous fermenters and could

warrant further investigation. Within the Orders Clostridiales and Bacteroidales, the families Prevotellaceae, Ruminococcaceae and Lachnospiraceae predominated respectively (Figure 2). The same families have been observed to be predominant and common organisms in the cattle rumen (based on 16S rRNA gene data), regardless of diet, breed and age [26,34,35,36,37]. The presence of these organisms in macropods suggests that they may be performing similar functions as occurs in the rumen (i.e. fibre

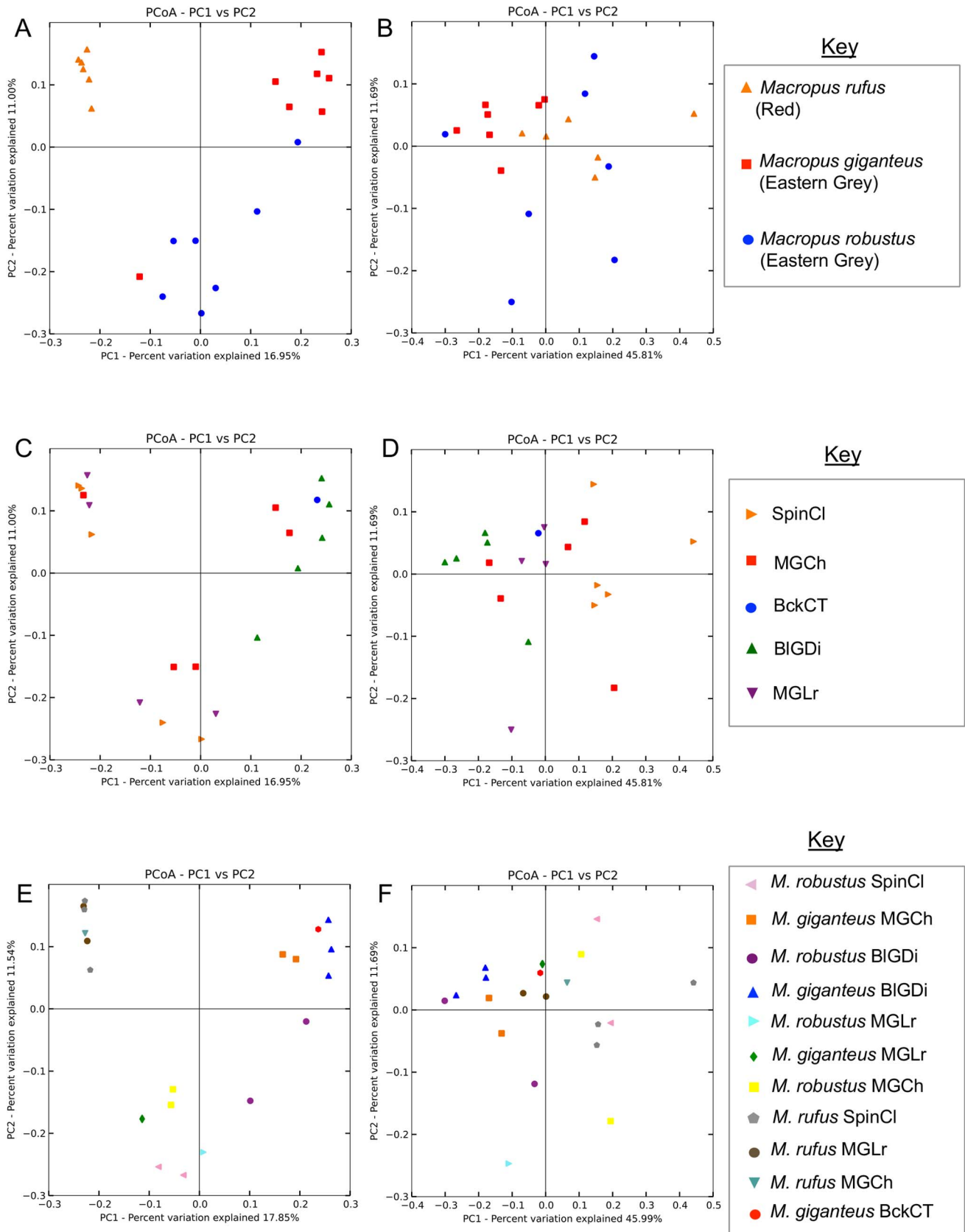


Figure 4. Principal Co-ordinate Analysis (PCoA) of bacterial OTUS from the macropod foregut of 20 macropods. Principal Co-ordinate Analysis (PCoA) of bacterial OTUS from the macropod foregut of 20 macropods from Queensland. A) Unweighted PCoA by host species B) Weighted PCoA by host species C) Unweighted PCoA by feedtype/location D) Weighted PCoA by feedtype/location E) Unweighted PCoA by species/feedtype/ F) Weighted PCoA by species/feedtype/

location F) Weighted PCoA by species/feedtype/location. SpinCl = Spinifex/Cloncurry, MGCh = Mitchell grass/Charleville, BckCT = Blackgrass/Charters Towers, BIGDi = Bluegrass/Dingo, MGLr = Mitchellgrass/Longreach.
doi:10.1371/journal.pone.0061463.g004

digestion, degradation of proteins and polysaccharides, production of volatile fatty acids and protein and nutrient recycling [37,38]. Future work could utilise newer molecular technologies, such as metatranscriptomics, to elucidate the functions and metabolic pathways present in the macropod foregut.

Shared OTUs and Roles

Shared OTUs from this study were identified as OTUs that were found in all macropods examined. Firmicutes and Bacteroidetes were the only Phyla represented as shared OTUs (Figure 3). Within Firmicutes, many of the OTUs were identified as unclassified Lachnospiraceae, unclassified Ruminococcaceae and unclassified Clostridiales. It is not possible to deduce the exact function of these novel groups in each system based on 16S rRNA data alone however many culture-independent techniques (using 16S rRNA) examining the gut bacterial communities have identified the same ubiquitous groups in macropods *M. eugenii* and *M. rufus* [13,29]; cattle [25,26,27]; mice [39,40] and human [41,42,43] gut ecosystems. Interestingly, only ten shared OTUs could be classified at the genus level and included a *Coproccoccus* sp. that displayed high identity (>99%) to an OTU present in a captive *M. rufus* fecal sample [29]. The presence of these homologous sequences in our data, suggests that these particular species may be performing the same function in macropods regardless of the host species, as well as performing similar functions as to what occurs in other gut ecosystems. However, functional assays in tandem with phylogenetic screening would need to be performed to further substantiate this claim.

The function of shared OTUs that could be identified to the species level (based on $\geq 98\%$ identity, Greengenes named isolates – Table S2) can be speculated based on cultured representatives of these species. Of particular interest are shared OTUs identified in our study that have highly homologous 16S rRNA gene sequences to fibrolytic bacteria found in the rumen environment such as OTU #4460 (*Ruminococcus flavefaciens*) and OTU #9791 (*Butyrivibrio fibrisolvens*). Both *R. flavefaciens* and *B. fibrisolvens* have been demonstrated as members of a consortium of microbes involved in fibrolytic digestion (specifically hemicellulose and xylan deconstruction) in the rumen [44,45,46,47,48,49,50,51]. It is not surprising that fibrolytic bacteria, similar to those that occur in the rumen, were identified in macropods, particularly as many macropods in Northern Australia are often co-grazing on the same native pastures as beef/dairy cattle [52]. The identification of fibrolytic bacteria is important for many industries worldwide including the beef cattle industry. Improved fibrolytic activity in the rumen can result in improved feed efficiency and animal growth, which would be beneficial to the cattle industry [53]. Specifically the use of exogenous enzymes applied to feed prior and with ingestion, has shown improved growth of cattle [54,55,56,57]. Glycosyl hydrolases (GH) are another useful group of enzymes that are capable of breakdown of cellulosic biomass and are of significant interest to the biofuel industry [58]. Rumen metagenomes have been scoured to identify potential GH genes [59]. It is highly likely that novel and uncharacterized fibrolytic bacteria and hence novel cellulolytic enzymes exist in macropods. Future work will focus on generating metagenomes and meta-transcriptomes of our samples for bio-prospecting purposes.

Alpha Diversity

Differences were observed in alpha diversity measures for individual samples (Table S1). The host species *M. rufus* had the highest diversity of all the species examined and differed significantly from the other host species (Table 2). Studies by Ley et al. [29], Muegge et al. [14] and Pope et al., [13] are the only comparable studies published that have examined the general bacterial community of macropod foreguts using molecular techniques, specifically targeting the 16S rRNA gene. Ley et al. [29] and Muegge et al. [14] examined faecal samples of captive *M. rufus* as part of broader studies of gut ecosystems (Ley et al. [29] (n=2, Sanger sequencing) and Muegge et al. [14] (n=1, 454-amplicon pyrosequencing)); and Pope et al. [13] a captive *M. eugenii* (n=8, Sanger sequencing). The average number of observed species obtained for the aforementioned studies was 111 [29], 870 [14] and 206 [13]. Numbers of OTUs observed in our study were much higher (average 1050), however this may be a reflection of sequencing depth achieved (thousands for pyrosequencing as compared to hundreds for traditional cloning/sequencing), rather than a reflection of the actual diversity. Alpha diversity measures must be interpreted with caution, as it has been demonstrated that sequence number can have an effect on alpha diversity measures (especially observed species). Additionally, alpha diversity measures that utilize rare species (i.e. singletons and doubletons) in their calculations (such as Good's coverage and Chao) are not robust across varying sampling/sequence depths [28].

Beta Diversity

Beta diversity (PCoA and tb-PCA) supported the differentiation of the macropod host species based on the gut bacterial community (Figure 4 and Figure 5) and this is the first report, demonstrating clear differences in the macropod bacterial foregut community. Eleven dominant OTUs were identified that contributed to this separation and five OTUs were highly homologous (>97%) to isolates from *M. eugenii* and four of these OTUs were classified as novel *Prevotella* spp. (Figure 5 and Table S2). The reported roles of many species of *Prevotella* specifically in the rumen of cattle and sheep (where they tend to predominate) are varied and broadly cover the degradation of starch, proteins and peptides [60,61,62,63] and although not cellulolytic organisms *per se*, many species are known to produce cellulolytic enzymes [61]. The exact role of novel *Prevotella* spp. in macropods remains to be elucidated.

Another dominant OTU of interest that separated most of the *M. giganteus* samples from the other macropod species displayed high identity to a ruminal *Syntrophococcus sucromutans* that is a known reductive acetogen. Identifying a reductive acetogen in macropods is not surprising, as it has been proposed that hydrogenotrophic bacteria (specifically reductive acetogens) utilise hydrogen and reduce carbon dioxide to acetate via the reductive acetogenesis pathway [4]. However, in the rumen, methane is generated by methanogenic archaea that utilise hydrogen and reduce carbon dioxide and this is thought to out-compete reductive acetogenesis. It is unexpected that a reductive acetogen with high similarity to a ruminal acetogen was identified in a macropod sample. Furthermore, to complicate the reductive acetogenesis/methanogenesis issue, homologous 16S rRNA gene sequences from previously identified macropod reductive acetogens [4,5], were identified in our study (data not shown). Therefore it is essential that the identification and role of reductive acetogens in

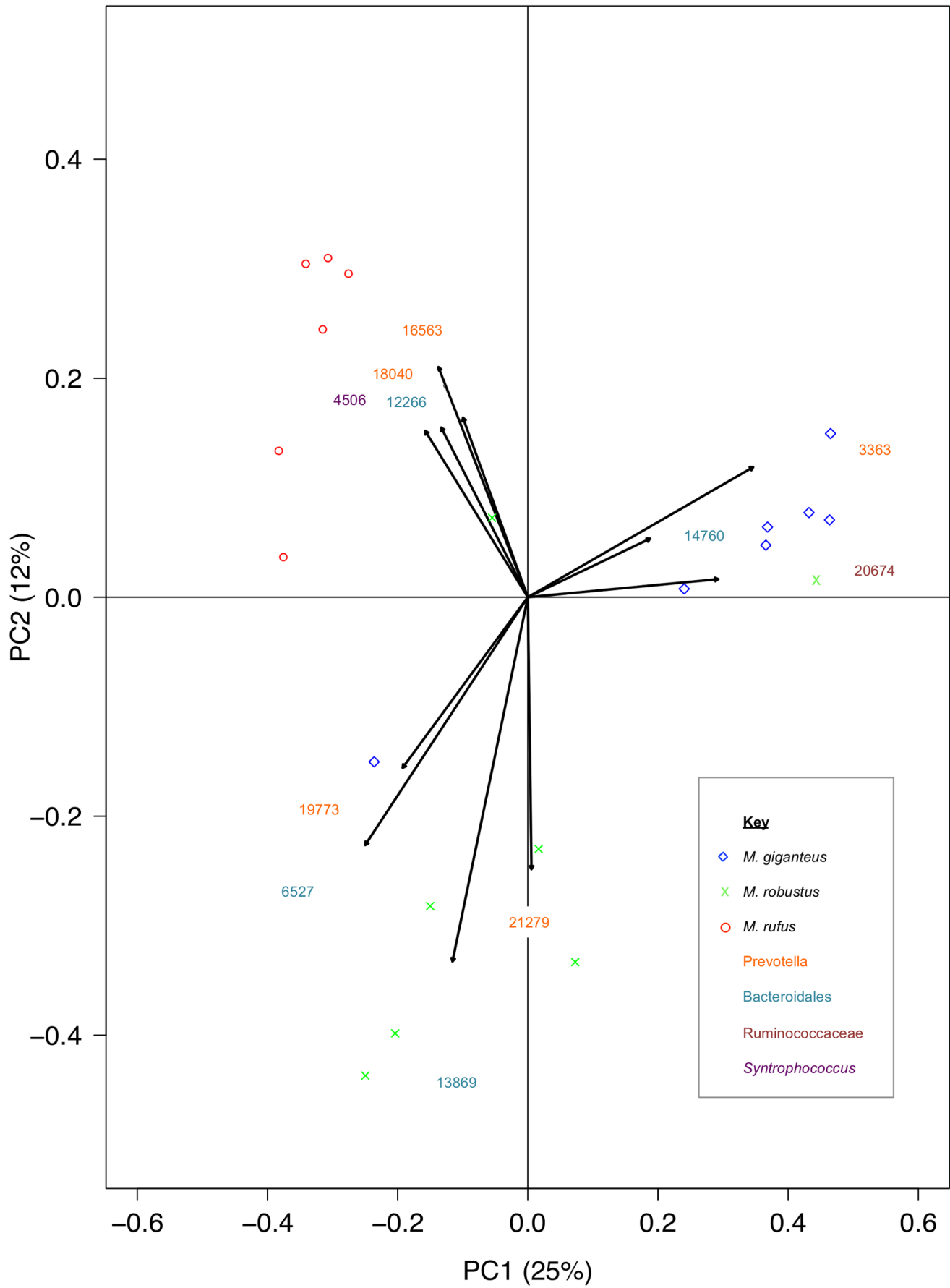


Figure 5. Transformation based Principal Component Analysis (tb-PCA) of bacterial OTUs from 20 Queensland macropod foregut samples. The top 0.01% OTUs contributing to the separation of samples are displayed on the figure (OTU number). OTUs were classified as *Prevotella spp.*, Bacteroidales (unclassified), Ruminococcaceae (unclassified) and *Syntrophococcus spp.*
doi:10.1371/journal.pone.0061463.g005

macropods be further understood. This could be achieved by direct comparison of macropod and rumen gut samples.

Future Work/conclusions

As many novel organisms are present in macropods, it is important that future work is geared towards linking the phylogeny of novel organisms to their function. Manefield et al. [64] used RNA Stable Isotope Probing (SIP), in conjunction with Denaturant Gradient Gel Electrophoresis (DGGE) to identify and classify phenol-degrading bacteria in an industrial bioreactor. A similar approach (either DNA or RNA SIP) may be used to identify hydrogenotrophic bacteria in the macropod foregut utilizing deuterium (^2H) or 'heavy' carbon dioxide ($^{13}\text{CO}_2$) as SIP substrates. New technologies such as metagenomics and metatranscriptomics could also be used to establish metabolic functions in parallel with single cell genomics and Fluorescent Activated Cell Sorting (FACS) for identifying and characterizing specific organisms involved in fibre digestion and hydrogenotrophy. Furthermore, the sampling of a wider range of macropods (species and location), combined with the sampling of analogous ecosystems (e.g. ruminants) should enable the elucidation of metabolic pathways, and organisms involved that are shared between the ecosystems and are discordant between the ecosystems. Ideally, the identification of fibrolytics will be exploited for improved feed efficiency and subsequently, animal growth of commercial ruminants and the identification and characterization of hydrogenotrophs (specifically reductive acetogens) utilized in agricultural methane mitigation.

References

- Hume I (1999) Marsupial Nutrition: Cambridge University Press.
- Dellow DW, Hume ID (1982) Studies on the nutrition of macropodine marsupials. IV Digestion in the stomach and the intestine of *Macropus giganteus*. Australian Journal of Zoology 30: 767–777.
- Dellow DW, Hume ID, Clarke RTJ, Bauchop T (1988) Microbial activity in the forestomach of free-living macropodid marsupials: comparisons with laboratory studies. Australian Journal of Zoology 31: 433–443.
- Ouwerkerk D, Klieve AV, Forster RJ, Templeton JM, Maguire AJ (2005) Characterization of culturable anaerobic bacteria from the forestomach of an eastern grey kangaroo, *Macropus giganteus*. Letters in Applied Microbiology 41: 327–333.
- Ouwerkerk D, Maguire AJ, McMillen L, Klieve AV (2009) Hydrogen utilising bacteria from the forestomach of eastern grey (*Macropus giganteus*) and red (*Macropus rufus*) kangaroos. Animal Production Science 49: 1043–1051.
- Gagen EJ, Denman SE, Padmanabha J, Zadbuke S, Al Jassim R, et al. (2010) Functional Gene Analysis Suggests Different Acetogen Populations in the Bovine Rumen and Tammar Wallaby Forestomach. Applied and Environmental Microbiology 76: 7785–7795.
- Kempton TJ, Murray RM, Leng RA (1976) Methane Production and Digestibility Measurements in the Grey Kangaroo and Sheep. Australian Journal of Biological Science 29: 209–214.
- Madsen J, Bertelsen MF (2012) Methane production by red-necked wallabies (*Macropus rufogriseus*). Journal of Animal Science 90: 1364–1370.
- Tringe S, Hugenholtz P (2008) A renaissance for the pioneering 16S rRNA gene. Current Opinion in Microbiology 11: 442–446.
- Godoy-Vitorino F, Goldfarb KC, Karaoz U, Leal S, Garcia-Amado MA, et al. (2012) Comparative analyses of the foregut and hindgut bacterial communities in hoatzins and cows. The ISME journal 6: 531–541.
- Ishoey T, Woyke T, Stepanauskas R, Novotny M, Lasken RS (2008) Genomic sequencing of single microbial cells from environmental samples. Current Opinion in Microbiology 11: 198–204.
- Pitta DW, Pinchak WE, Dowd SE, Osterstock J, Gontcharova V, et al. (2010) Rumen Bacterial Diversity Dynamics Associated with Changing from Bermuda-grass Hay to Grazed Winter Wheat Diets. Microbial Ecology 59: 511–522.
- Pope PB, Denman SE, Jones M, Tringe SG, Barry K, et al. (2010) Adaptation to herbivory by the Tammar wallaby includes bacterial and glycoside hydrolase

Supporting Information

Table S1 Measures of Good's estimate and alpha diversity of bacterial communities present in 20 wild macropod forestomach samples from Queensland calculated at a depth of 8700 sequences. GB = Grey Buck, GD = Grey Doe, RB = Red Buck, RD = Red Doe, WB = Wallaroo Buck, WD = Wallaroo Doe.

(DOC)

Table S2 Shared bacterial OTUs present in all 20 wild macropod forestomach samples from Queensland, Australia, classified using the BLAST algorithm against the Greengenes and NCBI Genbank nucleotide databases.

(DOC)

Table S3 Bacterial OTUs, identified using tb-PCA, that enable the separation of 20 wild macropod forestomach samples into host macropod species, classified using the BLAST algorithm against the Greengenes and NCBI Genbank nucleotide databases.

(DOC)

Author Contributions

Conceived and designed the experiments: LMG DO AVK. Performed the experiments: LMG AYHK AJM. Analyzed the data: LMG DO MK. Contributed reagents/materials/analysis tools: DO AJM. Wrote the paper: LMG DO AYHK AK.

- profiles different from other herbivores. Proceedings of the National Academy of Sciences of the United States of America 107: 14793–14798.
- Muegge BD, Kuczynski J, Knights D, Clemente JC, Gonzalez A, et al. (2011) Diet Drives Convergence in Gut Microbiome Functions Across Mammalian Phylogeny and Within Humans. Science 332: 970–974.
 - Klieve AV, Ouwerkerk D, Maguire AJ (2012) Archaea in the foregut of macropod marsupials: PCR and amplicon sequence-based observations. Journal of Applied Microbiology.
 - Watanabe K, Kodama Y, Harayama S (2001) Design and evaluation of PCR primers to amplify bacterial 16S ribosomal fragments used for community fingerprinting analysis. Journal of Microbiological Methods 44: 253–262.
 - Baker GC, Smith JJ, Cowan DA (2003) Review and re-analysis of domain-specific 16S primers. Journal of Microbiological Methods 55: 541–555.
 - Schloss PD, Westcott SL, Ryabin T, Hall JR, Hartmann M, et al. (2009) Introducing mothur: Open-Source, Platform-Independent, Community-Supported Software for Describing and Comparing Microbial Communities. Applied and Environmental Microbiology 75: 7537–7541.
 - Bragg L, Stone G, Imelfort M, Hugenholtz P, Tyson G (2012) Fast, accurate error-correction of amplicon pyrosequences using Acacia. Nature Methods 9: 425–426.
 - Caporaso JG, Kuczynski J, Stombaugh J, Bittinger K, Bushman FD, et al. (2010) QIIME allows analysis of high-throughput community sequencing data. Nature Methods 7: 335–336.
 - De Santis TZ, Hugenholtz P, Larsen N, Rojas M, Brodie EL, et al. (2006) Greengenes, a Chimera-Checked 16S rRNA Gene Database and Workbench Compatible with ARB. Applied and Environmental Microbiology 72: 5069–5072.
 - Cole JR, Wang Q, Cardenas E, Fish J, Chai B, et al. (2009) The Ribosomal Database Project: improved alignments and new tools for rRNA analysis. Nucleic Acids Research 37: D141–D145.
 - Hass BJ, Gevers D, Earl AM, Feldgarden M, Ward DV, et al. (2011) Chimeric 16S rRNA sequence formation and detection in Sanger and 454-pyrosequenced PCR amplicons. Genome Res 21: 494–504.
 - Legendre P, Gallagher ED (2001) Ecologically meaningful transformations of ordinations of species data. Oecologia 129: 271–280.
 - Dowd SE, Callaway TR, Wolcott RD, Sun Y, McKeehan T, et al. (2008) Evaluation of the bacterial diversity in the feces of cattle using 16S rDNA

- bacterial tag-encoded FLX amplicon pyrosequencing (bTEFAP). *BioMed Central Microbiology* 8.
26. Jami E, Mizrahi I (2012) Composition and Similarity of Bovine Rumen Microbiota across Individual Animals. *PLoS ONE* 7.
 27. Shanks OC, Kelty CA, Archibeque S, Jenkins M, Newton RJ, et al. (2011) Community Structures of Fecal Bacteria in Cattle from Different Animal Feeding Operations. *Applied and Environmental Microbiology* 77: 2992–3001.
 28. Lemos LN, Fulthorpe RR, Triplett EW, Roesch LFW (2011) Rethinking microbial diversity analysis in the high throughput sequencing era. *Journal of Microbiological Methods* 86: 42–51.
 29. Ley RE, Hamady M, Lozupone C, Turnbaugh PJ, Ramey RR, et al. (2008) Evolution of mammals and their gut microbes. *Science* 320: 1647–1651.
 30. Hong P-Y, Wheeler E, Cann IKO, Mackie RI (2011) Phylogenetic analysis of the fecal microbial community in herbivorous land and marine iguanas of the Galapagos Islands using 16S rRNA-based pyrosequencing. *The ISME journal* 5: 1461–1470.
 31. De Filippo C, Cavalieri D, Di Paola M, Ramazzotti M, Poullet JB, et al. (2010) Impact of diet in shaping gut microbiota revealed by a comparative study in children from Europe and rural Africa. *Proceedings of the National Academy of Sciences in the United States of America* 107: 14691–14696.
 32. Ley RE, Turnbaugh PJ, Klein S, Gordon JI (2006) Human gut microbes associated with obesity. *Nature Microbial Ecology* 444: 1022–1023.
 33. Mariat D, Firmesse O, Levenez F, Guimaraes VD, Sokol H, et al. (2009) The Firmicutes/Bacteroidetes ratio of the human microbiota changes with age. *Bio Med Central Microbiology* 9.
 34. Edwards JE, McEwan NR, Travis AJ, Wallace RJ (2004) 16SrDNA library-based analysis of ruminal bacterial diversity. *Antonie van Leeuwenhoek* 86: 263–281.
 35. Koike S, Yoshitani S, Kobayashi Y, Tanaka K (2003) Phylogenetic analysis of fiber-associated rumen bacterial community and PCR detection of uncultured bacteria. *FEMS Microbiology Letters* 229: 23–30.
 36. Kong Y, Teather RM, Forster RJ (2010) Composition, spatial distribution, and diversity of the bacterial communities in the rumen of cows fed different forages. *FEMS Microbiology Ecology* 74: 612–622.
 37. Zened A, Combes S, Cauquil L, Mariette J, Klopp C, et al. (2012) Microbial ecology of the rumen evaluated by 454 GS FLX pyrosequencing is affected by starch and oil supplementation of diets. *FEMS Microbiology Ecology* 83: 504–514.
 38. Wright A-DG, Klieve AV (2011) Does the complexity of the rumen microbial ecology preclude methane mitigation? *Animal Feed and Science Technology* 166/167: 248–253.
 39. Harrell L, Wang Y, Antonopoulos D, Young V, Lichtenstein L, et al. (2012) Standard colonic lavage alters the natural state of mucosal-associated microbiota in the human colon. *PLoS ONE* 7: E32545.
 40. Lawley TD, Clare S, Walker AW, Goulding D, Stabler RA, et al. (2009) Antibiotic treatment of clostridium difficile carrier mice trigger a supershedder state, spore-mediated transmission, and severe disease in immunocompromised hosts. *Infectious Immunity* 77: 3661–3669.
 41. Durban A, Abellan JJ, Jimenez-Hernandez N, Ponce M, Ponce J, et al. (2011) Assessing gut microbial diversity from feces and rectal mucosa. *Microbial Ecology* 61: 123–133.
 42. Li E, Hamm CM, Gulati AS, Sartor RB, Chen H, et al. (2012) Inflammatory Bowel Diseases Phenotype, *C. difficile* and NOD2 Genotype Are Associated with Shifts in Human Ileum Associated Microbial Composition. *PLoS ONE* 7: E26284.
 43. Tap J, Mondot S, Levenez F, Pelletier E, Caron C, et al. (2009) Towards the human intestinal microbiota phylogenetic common. *Environmental Microbiology Applied* 11: 2574–2584.
 44. Ayers WA (1958) Nutrition and Physiology of *Ruminococcus flavefaciens*. *Journal of Bacteriology* 76: 504–509.
 45. Berg Miller ME, Antonopoulos DA, Rincon MT, Band M, Bari A, et al. (2009) Diversity and Strain Specificity of Plant Cell Wall Degrading Enzymes Revealed by the Draft Genome of *Ruminococcus flavefaciens* FD-1. *PLoS ONE* 4: e6650.
 46. Bryant MP (1986) *Ruminococcus*. *Bergey's manual of systematic bacteriology*. Baltimore: Williams and Wilkins. 1093–1097.
 47. Forsberg CW, Cheng KJ, White BA (1997) Polysaccharide degradation in the rumen and large intestine. In: Mackie RI, White BA, Isaacson RE, editors. *Gastrointestinal Microbiology*. New York: Chapman and Hall.
 48. Hespell RB, Wolf R, Bothast RJ (1987) Fermentation of Xylans by *Butyrivibrio fibrisolvens* and Other Ruminal Bacteria. *Applied and Environmental Microbiology* 53: 2849–2853.
 49. Mrazek J, Tepsic K, Avgustin G, Kopecky J (2006) Diet-Dependent Shifts in Ruminal Butyrate-Producing Bacteria. *Folia Microbiologica* 51: 294–298.
 50. Odenyo AA, Mackie RI, Stahl DA, White BA (1994) The use of 16S rRNA-targeted oligonucleotide probes to study competition between ruminal fibrolytic bacteria: pure-culture studies with cellulose and alkaline peroxide-treated wheat straw. *Applied and Environmental Microbiology* 60: 3697–3703.
 51. Shinkai T, Kobayashi Y (2007) Localization of Ruminal Cellulolytic Bacteria on Plant Fibrous Materials as Determined by Fluorescence In Situ Hybridization and Real-Time PCR. *Applied and Environmental Microbiology* 73: 1646–1652.
 52. Orr DM (1975) A review of *Astrebula* (Mitchell grass) pastures in Australia. *Tropical Grasslands* 9: 21–35.
 53. Krause DO, Denman SE, Mackie RI, Morrison M, Rae AL, et al. (2003) Opportunities to improve fiber degradation in the rumen: microbiology, ecology, and genomics. *FEMS Microbiology Reviews* 27: 663–693.
 54. Beauchemin KA, Colombatto D, Morgavi DP, Yang WZ (2003) Use of Exogenous Fibrolytic Enzymes to Improve Feed Utilization by Ruminants. *Journal of Animal Science* 81: E37–E47.
 55. Beauchemin KA, Jones SDM, Rode LM, Sewalt JH (1997) Effects of fibrolytic enzymes in corn or barley diets on performance and carcass characteristics of feedlot cattle. *Canadian Journal of Animal Science* 77: 645–653.
 56. Beauchemin KA, Rode LM, Sewalt JH (1995) Fibrolytic enzymes increase fiber digestibility and growth rate of steers fed dry forages. *Canadian Journal of Animal Science* 75: 641–644.
 57. Selinger LB, Forsberg CW, Cheng KJ (1996) The Rumen: A Unique Source of Enzymes for Enhancing Livestock Production. *Anaerobe* 2: 263–284.
 58. Li LL, McCorkle SR, Monchy S, Taghavi S, van der Lelie D (2009) Bioprospecting metagenomes: glycosyl hydrolases for converting biomass. *Biotechnology for Biofuels* 2.
 59. Hess M, Sczyrba A, Egan R, Kim T-W, Chokhawala H, et al. (2011) Metagenomic Discovery of Biomass-Degrading Genes and Genomes from Cow Rumen. *Science* 331.
 60. Avgustin G, Wallace JR, Flint HJ (1997) Phenotypic Diversity among Ruminal Isolates of *Prevotella ruminicola*: Proposal of *Prevotella brevis* sp. nov., *Prevotella bryantii* sp. nov., and *Prevotella albensis* sp. nov. and Redefinition of *Prevotella ruminicola*. *International Journal of Systematic and Evolutionary Biology* 47: 284–288.
 61. Miyazaki K, Martin JC, Marinsek-Logar R, Flint HJ (1997) Degradation and Utilization of Xylans by the Rumen Anaerobe *Prevotella bryantii* (formerly *P. ruminicola* subsp. *brevis*) B/4. *Anaerobe* 3: 373–381.
 62. Stevenson DM, Weimer PJ (2007) Dominance of *Prevotella* and low abundance of classical ruminal bacterial species in the bovine rumen revealed by quantification real-time PCR. *Applied Microbial and Cell Physiology* 75.
 63. Wallace RJ, McKain N, Broderick GA, Rode LM, Walker ND, et al. (1997) Peptidases of the Rumen Bacterium, *Prevotella ruminicola*. *Anaerobe* 3: 35–42.
 64. Manefield M, Whiteley AS, Griffiths RI, Bailey MJ (2002) RNA Stable Isotope Probing, a Novel Means of Linking Microbial Community Function to Phylogeny. *Applied and Environmental Microbiology* 68: 5367–5373.